



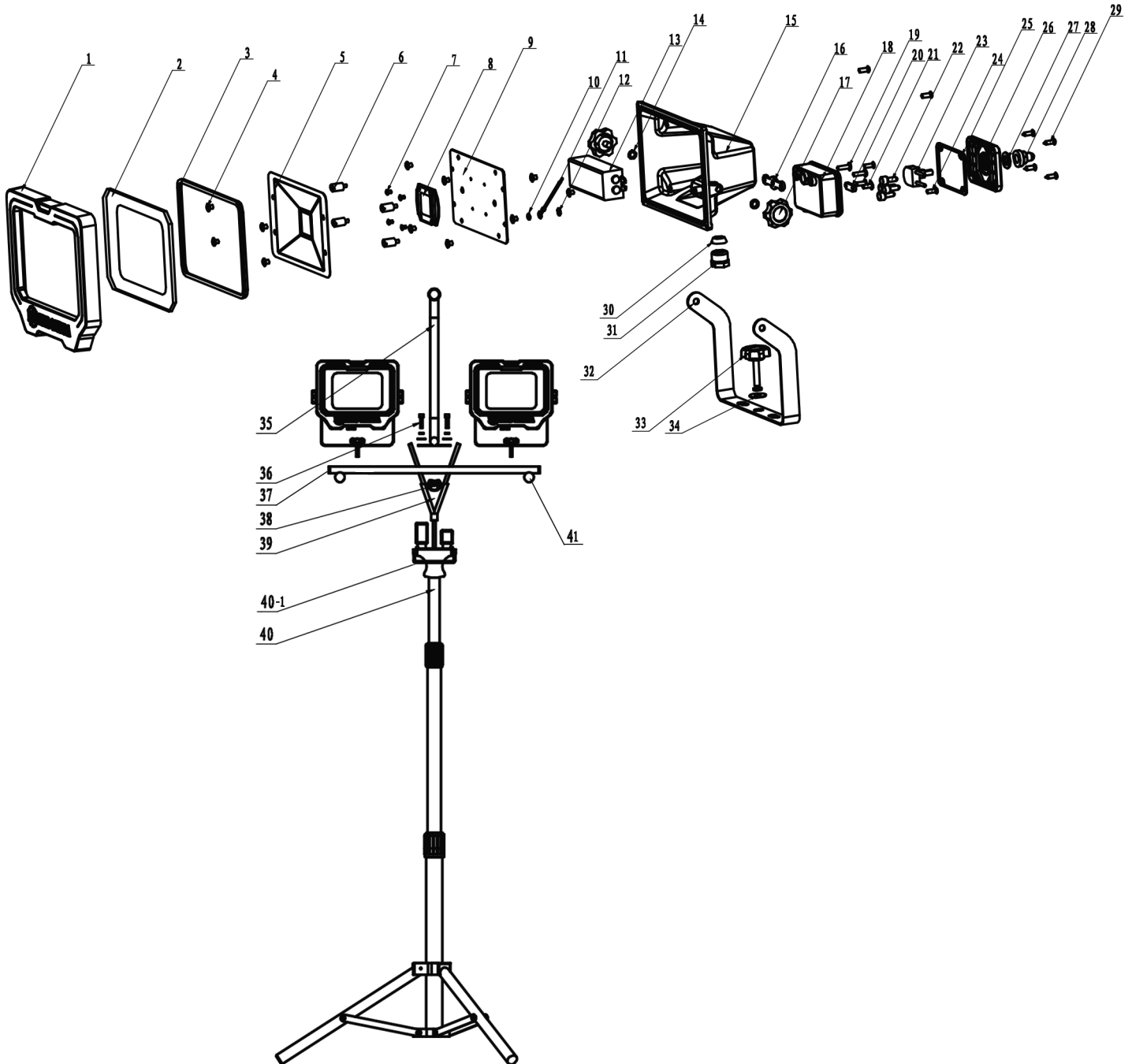
Service Manual / Manuel de Service

LED Work Light Lampe de Travail DEL



Revised/Revisé 03/15/2018

KC-2402LED-ST





Parts Pricing List / Liste de Prix des Pièces **KC-2402LED-ST**

| Diag. | Order # Com. | English Description | Description Française | Qty./Qté. | Price/Prix |
|-------|--------------|------------------------------|----------------------------------|-----------|------------|
| 1 | 42-16020010 | OUTER COVER | COUVERCLE EXTERIEUR | 2 | \$8.71 |
| 2 | 42-16020020 | PROTECTIVE COVER | COUVERCLE DE PROTECTION | 2 | \$5.78 |
| 3 | 42-16020030 | SEAL RING | JOINT D'ETANCHEITE | 2 | \$2.85 |
| 4 | 42-16020040 | SCREW | VIS | 22 | \$1.39 |
| 5 | 42-16020050 | REFLECTOR | REFLECTEUR | 2 | \$8.04 |
| 6 | 42-16020060 | FIXED LEG | JAMBE FIXE | 8 | \$1.16 |
| 7 | 42-16020070 | COUNTERSUNK HD SCREW | VIS A TETE FRAISEE | 8 | \$1.39 |
| 8 | 42-16020080 | LED LIGHT | LUMIERE DEL | 2 | \$20.42 |
| 9 | 42-16020090 | LIGHT SOURCE FIXED PLATE | PLAQUE FIXE | 2 | \$6.13 |
| 10 | 42-16020100 | SPRING WASHER | RONDELLE A RESSORT | 2 | \$2.50 |
| 11 | 42-16020110 | GROUND WIRE | FIL DE MISE A LA TERRE | 2 | \$1.39 |
| 12 | 42-16020120 | TOOTH TYPE GASKET | JOINT D'ETANCHEITE DENTELEE | 2 | \$1.10 |
| 13 | 42-16020130 | CONTROL BOX | BOITE DE CONTROLE | 2 | \$17.50 |
| 14 | 42-16020140 | SPRING WASHER | RONDELLE A RESSORT | 8 | \$2.50 |
| 15 | 42-16020150 | HOUSING | BOITIER | 2 | \$10.18 |
| 16 | 42-16020160 | THREE HOLE GASKET | JOINT D'ETANCHEITE A TROIS TROUS | 2 | \$1.39 |
| 17 | 42-16020170 | LOCK KNOB | BOUTON DE VERROUILLAGE | 4 | \$2.85 |
| 18 | 42-16020180 | JUNCTION BOX | BOITE ELECTRIQUE | 2 | \$5.78 |
| 19 | 42-16020190 | SCREW | VIS | 5 | \$1.39 |
| 20 | 42-16020200 | CORD CLAMPING PLATE | PLAQUE DU CORDON | 2 | \$2.85 |
| 21 | 42-16020210 | TAPPING SCREW | VIS AUTOTARAUDEUSE | 4 | \$1.74 |
| 22 | 42-16020220 | WIRE CONNECTOR | CONNECTEUR DU FIL | 8 | \$1.74 |
| 23 | 42-16020230 | SWITCH | INTERRUPTEUR | 2 | \$5.78 |
| 24 | 42-16020240 | STAINLESS STEEL CROSS SCREW | VIS EN ACIER INOXYDABLE | 8 | \$1.39 |
| 25 | 42-16020250 | JUNCTION BOX SEALING RING | ANNEAU DE LA BOITE DE CONTROLE | 2 | \$1.39 |
| 26 | 42-16020260 | TERMINAL BOX LID | COUV. DE LA BOITE ELECTRIQUE | 2 | \$2.85 |
| 27 | 42-16020270 | SWITCH GASKET | JOINT D'ETANCHEITE DE L'INTERR. | 2 | \$1.39 |
| 28 | 42-16020280 | WATERPROOF CAP | CAPUCHON | 2 | \$2.33 |
| 29 | 42-16020290 | COUNTERSUNK HD SCREW | VIS A TETE FRAISEE | 8 | \$1.39 |
| 30 | 42-16020300 | PLUG | BOUCHON | 2 | \$1.39 |
| 31 | 42-16020310 | STRAIN RELIEF | ATTACHE FIL | 2 | \$1.39 |
| 32 | 42-16020320 | SUPPORTING STRUCTURE | STRUCTURE DE SUPPORT | 2 | \$7.25 |
| 33 | 42-16020330 | LOCK KNOB | BOUTON DE VERROUILLAGE | 2 | \$2.85 |
| 34 | 42-16020340 | WASHER | RONDELLE | 4 | \$2.50 |
| 35 | 42-16020350 | HANDLE | POIGNEE | 1 | \$10.18 |
| 36 | 42-16020360 | HEX. BOLT | BOULON HEXAGONAL | 2 | \$3.06 |
| 37 | 42-16020370 | BASE | BASE | 1 | \$11.64 |
| 38 | 42-16020380 | POWER CORD KNOB | BOUTON DU CORDON D'ALIMEN. | 1 | \$1.39 |
| 39 | 42-16020390 | Y-TYPE POWER CORD | CORDON D'ALIMENTATION TYPE "Y" | 1 | \$21.89 |
| 40 | 42-16020400 | COMPLETE TRIPOD | TREPIED COMPLET | 1 | \$54.10 |
| 40-1 | 42-16020401 | CLAMP | ATTACHE | 1 | \$10.58 |
| 41 | 42-16020410 | FOOT | PIED | 4 | \$1.74 |
| | 422402MBIL | BILINGUAL MAN. KC-2402LED-ST | MANUEL BILINGUE KC-2402LED-ST | 1 | \$24.17 |