



***Dynamic***

***Because You Have Work To Do***



## Dynamic® Tools- For Occasional Yet Demanding Projects

You are a busy professional who needs to get the job done quickly and efficiently. The Dynamic® line of tools is designed to offer just that: a cost effective way to complete your demanding projects using reliable and comfortable tools.

The ease-of-use of the tools is reflected across different product categories. The laser etching on the sockets and wrenches make the selection of the right size a breeze. Other product categories such as pliers and screwdrivers feature ergonomic and highly visible handles making the tools easy to spot in the toolbox. All tools have been designed to ensure durability and many years of service.

All Dynamic® products are backed by a lifetime warranty and Gray's Customer Service, which consistently ranks first in the industry.

We invite you to discover the benefits of the new Dynamic® line at an industrial distributor near you. Our goal is to make your job easier, "Because You Have Work To Do"™ !

The Dynamic® Team



# Contents

## Table of Contents

### **Sockets & Attachments**

<b>1/4" Drive Chrome</b> .....	<b>6</b>
<b>3/8" Drive Chrome</b> .....	<b>16</b>
<b>3/8" Drive Impact</b> .....	<b>38</b>
<b>1/2" Drive Chrome</b> .....	<b>42</b>
<b>1/2" Drive Impact</b> .....	<b>57</b>
<b>3/4" Drive Chrome</b> .....	<b>61</b>
<b>3/4" Drive Impact</b> .....	<b>64</b>

### **Wrenches**

<b>Combination Wrenches</b> .....	<b>68</b>
<b>Ratcheting Wrenches</b> .....	<b>74</b>
<b>Adjustable Wrenches</b> .....	<b>80</b>
<b>Pipe Wrenches</b> .....	<b>80</b>
<b>Hex Keys</b> .....	<b>81</b>

<b>Screwdrivers</b> .....	<b>84</b>
---------------------------	-----------

<b>Insulated Tools</b> .....	<b>92</b>
------------------------------	-----------

### **Pliers**

<b>Comfort Handle</b> .....	<b>96</b>
<b>Locking</b> .....	<b>101</b>

<b>Punches &amp; Chisels</b> .....	<b>104</b>
------------------------------------	------------

<b>Clamping &amp; Extracting</b> .....	<b>108</b>
--	------------

### **Striking Tools**

<b>Hammers</b> .....	<b>110</b>
<b>Pry Bars</b> .....	<b>114</b>

<b>Staplers</b> .....	<b>116</b>
-----------------------	------------

### **Shaping Tools**

<b>Saws</b> .....	<b>118</b>
<b>Files</b> .....	<b>119</b>

<b>Alphabetical Index</b> .....	<b>120</b>
---------------------------------	------------

<b>Numerical Index</b> .....	<b>121</b>
------------------------------	------------

# Why Dynamic

## Better Design For Greater Efficiency



Dynamic tools are designed to help you finish projects faster. Extensive consumer research conducted by independent companies combined with our own tool expertise allowed us to offer tools designed to address the most important hand tool requirements. The laser-etched markings on sockets and wrenches make the selection of the right size a breeze. Other product categories feature ergonomic and highly visible handles making tools easy to spot in any toolbox.

## Higher Quality Standards for Trusted Reliability



By partnering with the most qualified global suppliers capable and willing to comply with our high quality standards, Dynamic® offers a large number of professional users in industrial, construction and trades access to reliable tools. Dynamic is offered by a reputable company that has been in the hand tool business since 1912. This tool expertise results in each tool being carefully inspected and tested to make sure it provides many years of service. Furthermore, the vast majority of the products are backed by a no hassle lifetime warranty.

## Select Distribution For Better Service



Dynamic tools are offered through a network of highly specialized distribution partners that are carefully selected to sell and service the line. These focused distributors provide faster service, experienced know how, knowledgeable advice, immediate delivery and personalized post sale service. Because getting the tools you need for the job should not be a hassle.

To locate the Dynamic retailer near you visit our website [www.dynamictools.ca](http://www.dynamictools.ca) and click on Where to Buy.

## Become a Member Of the Dynamic Community

Join the Dynamic Tools community and enjoy the benefits:

- Be the first to receive new product notifications
- Get access to exclusive offers & contests
- Ask questions before you buy
- Expand your social network



[facebook.com/dynamictools](https://facebook.com/dynamictools)



[@dynamictools](https://twitter.com/dynamictools)

[www.dynamictools.ca](http://www.dynamictools.ca)

## Warranty Policy

### Limited Lifetime Warranty:

We stand behind the quality of the products we manufacture & redistribute. In the unlikely event a product fails, warranty will be granted quickly and unconditionally, providing the products were used for the application intended. Products used inappropriately or not maintained properly will not be considered for warranty.

No warranty consideration can be made if the initial inspection shows that the product has been:

- Hammered.
- Heated.
- Used with any device to create additional leverage.
- Machined or modified in any way.
- Used for purposes other than those, which it was designed for.
- Overstressed or over torqued.

Products such as ratchets, flex handles, pullers, universal joints, and adjustable wrenches require periodic maintenance and repair. When a product needs repair due to normal wear and tear, the repair will be at the customer's expense.

### Limited Warranty:

The following products carry a 2 year warranty:

- Staplers.

*Please keep your proof of purchase records, which will be required for warranty.*

Gray Tools Canada Inc. will be the sole authority in evaluating the products and determining warranty claims and will be glad to replace products qualifying for warranty received prepaid. Gray Tools Canada Inc. shall not be liable for any damage or injury due to product failure.

If your product qualifies for warranty, please return it to your local distributor, or call our Customer Service department for a warranty inspection number and ship the tool prepaid to the following address:

Gray Tools Canada Inc. 299 Orenda Road Brampton, Ontario, L6T 1E8

# Sockets



## Complete Assortment

Sockets are available in chrome, impact, hex, slotted, Phillips® and Torx®.

## Large and Visible Markings

Laser etched markings improve size identification and provides SAE/Metric differentiation.

## User-Friendly Design

Chrome sockets feature a knurl for improved grip (3/8" and 1/2" drive only).

## Modern Finish

Electro-phosphate finish on impact sockets provides a cleaner and modern look.

## Professional Grade

All sockets meet ANSI standards.



# Sockets

## 11 Piece 6 Point Standard SAE Socket Set

Part No. D004000



**Set Content:**

**11 Standard SAE Sockets: 5/32", 3/16", 7/32", 1/4", 9/32", 5/16", 11/32", 3/8", 7/16", 1/2", 9/16"**  
**Includes Rail.**

---

## 10 Piece 6 Point Deep SAE Socket Set

Part No. D004001



**Set Content:**

**10 Deep SAE Sockets: 3/16", 7/32", 1/4", 9/32", 5/16", 11/32", 3/8", 7/16", 1/2", 9/16"**  
**Includes Rail.**

---



## 10 Piece 12 Point Standard SAE Socket Set

Part No. D004007



**Set Content:**

10 Standard SAE Sockets: 3/16", 7/32", 1/4", 9/32", 5/16", 11/32", 3/8", 7/16", 1/2", 9/16"  
Includes Rail.

## 13 Piece 6 Point Standard Metric Socket Set

Part No. D004002



**Set Content:**

13 Standard Metric Sockets: 4, 5, 5.5, 6, 7, 8, 9, 10, 11, 12, 13, 14, 15mm  
Includes Rail.



# Sockets

## 12 Piece 6 Point Deep Metric Socket Set

Part No. D004003



**Set Content:**  
12 Deep Metric Sockets: 4, 5, 5.5, 6, 7, 8, 9, 10, 11, 12, 13, 14mm  
Includes Rail.

---

## 9 Piece 12 Point Standard Metric Socket Set

Part No. D004008



**Set Content:**  
9 Standard Metric Sockets: 4, 5, 6, 7, 8, 9, 10, 11, 12mm  
Includes Rail.

---

## 8 Piece Standard Length Torx® Socket Set

Part No. D004009



**Set Content:**

8 Torx® Sockets: T8, T9, T10, T15, T20, T25, T27, T30  
Includes Rail.

## 28 Piece 6 Point Standard SAE/Metric Socket Set

Part No. D004004



**Set Content:**

10 Standard SAE Sockets: 3/16", 7/32", 1/4", 9/32", 5/16", 11/32", 3/8", 7/16", 1/2", 9/16"  
13 Standard Metric Sockets: 4, 5, 5.5, 6, 7, 8, 9, 10, 11, 12, 13, 14, 15mm  
2" Extension, 6" Extension, Hand Driver, Universal Joint, 45 Tooth Chrome Ratchet

Includes Metal Case.



# Sockets

## 25 Piece 6 Point Standard/Deep SAE Socket Set

Part No. D004005



**Set Content:**

10 Standard SAE Sockets: 3/16", 7/32", 1/4", 9/32", 5/16", 11/32", 3/8", 7/16", 1/2", 9/16"  
10 Deep SAE Sockets: 3/16", 7/32", 1/4", 9/32", 5/16", 11/32", 3/8", 7/16", 1/2", 9/16"  
2" Extension, 6" Extension, Hand Driver, Universal Joint, 45 Tooth Chrome Ratchet

Includes Metal Case.

## 47 Piece 6 Point Standard/Deep SAE/Metric Socket Set

Part No. D004006



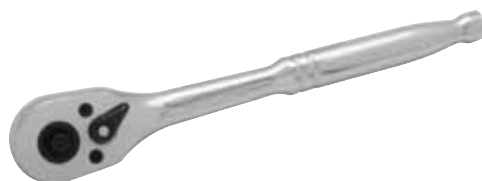
**Set Content:**

10 Standard SAE Sockets: 3/16", 7/32", 1/4", 9/32", 5/16", 11/32", 3/8", 7/16", 1/2", 9/16"  
10 Deep SAE Sockets: 3/16", 7/32", 1/4", 9/32", 5/16", 11/32", 3/8", 7/16", 1/2", 9/16"  
12 Standard Metric Sockets: 4, 5, 5.5, 6, 7, 8, 9, 10, 11, 12, 13, 14mm  
10 Deep Metric Sockets: 4, 5, 5.5, 6, 7, 8, 9, 10, 11, 12mm  
2" Extension, 6" Extension, Hand Driver, Universal Joint, 45 Tooth Chrome Ratchet

Includes Blow Mold Case.

### Quick Release Ratchet-Chrome Handle

Part No.	Length (inches)	Weight (lbs)	No. of Teeth
D001301	5.00	0.32	45



### Quick Release Ratchet-Comfort Handle

Part No.	Length (inches)	Weight (lbs)	No. of Teeth
D001302	5.00	0.32	72



### Swivel Head Ratchet-Comfort Handle

Part No.	Length (inches)	Weight (lbs)	No. of Teeth
D001306	6.00	0.30	72



### Stubby Ratchet

Part No.	Length (inches)	Weight (lbs)	No. of Teeth
D001307	3.50	0.17	48



## Dynamic Swivel Head Ratchets. Accessibility and Convenience that Make Your Job Easier





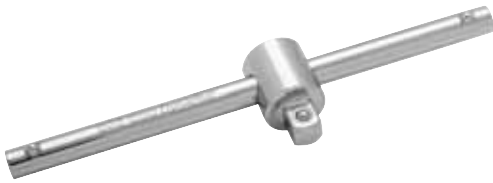
### Flex Handle

Part No.	Length (inches)	Weight (lbs)
D001800	6.00	0.25



### Chrome Extension

Part No.	Length (inches)	Weight (lbs)
D001002	2.00	0.05
D001004	4.00	0.10
D001006	6.00	0.15



### Sliding T-Handle

Part No.	Length (inches)	Weight (lbs)
D001500	4.49	0.09



### Universal Joint

Part No.	Length (inches)	Weight (lbs)
D001601	1.46	0.05



### Adapter

Part No.	Length (inches)	Female (inches)	Male (inches)	Weight (lbs)
D001201	1.00	1/4	1/4	0.03



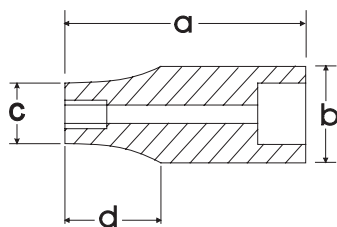
### Hand Driver

Part No.	Length (inches)	Weight (lbs)
D001101	6.00	0.23

## SAE Standard Chrome Sockets

Size			Overall Length (a) inches	Drive End (b) inches	Hex End (c) inches	Taper Length (d) inches	Net Weight (lbs)
	Part No.	Part No.					
5/32"	D003303		0.98	0.46	0.27	0.45	0.02
3/16"	D003304	D003404	0.98	0.46	0.31	0.45	0.02
7/32"	D003306	D003406	0.98	0.46	0.33	0.45	0.02
1/4"	D003308	D003408	0.98	0.46	0.37	0.45	0.03
9/32"	D003309	D003409	0.98	0.46	0.42	0.45	0.03
5/16"	D003310	D003410	0.98	0.46	0.46	0.00	0.03
11/32"	D003311	D003411	0.98	0.50	0.50	0.00	0.03
3/8"	D003312	D003412	0.98	0.54	0.54	0.00	0.03
7/16"	D003314	D003414	0.98	0.62	0.62	0.00	0.05
1/2"	D003316	D003416	0.98	0.70	0.70	0.00	0.07
9/16"	D003318	D003418	0.98	0.78	0.78	0.00	0.08

\* Meets A.N.S.I. standards



## SAE Deep Chrome Sockets

Size		Overall Length (a) inches	Drive End Width (b) inches	Hex End Length (c) inches	Taper Length (d) inches	Net Weight (lbs)
	Part No.					
3/16"	D003504	1.97	0.46	0.31	1.10	0.04
7/32"	D003506	1.97	0.46	0.33	1.10	0.04
1/4"	D003508	1.97	0.46	0.37	1.10	0.04
9/32"	D003509	1.97	0.46	0.42	1.10	0.05
5/16"	D003510	1.97	0.46	0.46	0.00	0.06
11/32"	D003511	1.97	0.51	0.51	0.00	0.06
3/8"	D003512	1.97	0.57	0.57	0.00	0.07
7/16"	D003514	1.97	0.62	0.62	0.00	0.09
1/2"	D003516	1.97	0.70	0.70	0.00	0.09
9/16"	D003518	1.97	0.78	0.78	0.00	0.11

\* Meets A.N.S.I. standards

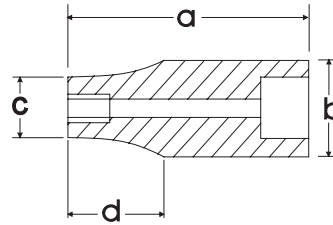




## Metric Standard Chrome Sockets

Size	Part No.	Part No.	Overall Length (a) inches	Drive End (b) inches	Hex End (c) inches	Taper Length (d) inches	Net Weight (lbs)
4 mm	D003004	D003104	0.98	0.46	0.27	0.45	0.02
4.5 mm	D003045		0.98	0.46	0.29	0.45	0.02
5 mm	D003005	D003105	0.98	0.46	0.31	0.45	0.02
5.5 mm	D003055		0.98	0.46	0.34	0.45	0.02
6 mm	D003006	D003106	0.98	0.46	0.37	0.45	0.02
7 mm	D003007	D003107	0.98	0.46	0.43	0.45	0.03
8 mm	D003008	D003108	0.98	0.46	0.46	0.00	0.03
9 mm	D003009	D003109	0.98	0.50	0.50	0.00	0.03
10 mm	D003010	D003110	0.98	0.54	0.54	0.00	0.03
11 mm	D003011	D003111	0.98	0.62	0.62	0.00	0.04
12 mm	D003012	D003112	0.98	0.66	0.66	0.00	0.05
13 mm	D003013		0.98	0.70	0.70	0.00	0.05
14 mm	D003014		0.98	0.78	0.78	0.00	0.08
15 mm	D003015		0.98	0.82	0.82	0.00	0.10

\* Meets A.N.S.I. standards



## Metric Deep Chrome Sockets

Size	Part No.	Overall Length (a) inches	Drive End Width (b) inches	Hex End Length (c) inches	Taper Length (d) inches	Net Weight (lbs)
4 mm	D003204	1.97	0.46	0.27	1.10	0.03
5 mm	D003205	1.97	0.46	0.31	1.10	0.04
5.5 mm	D003255	1.97	0.46	0.34	1.10	0.04
6 mm	D003206	1.97	0.46	0.37	1.10	0.04
7 mm	D003207	1.97	0.46	0.43	1.10	0.05
8 mm	D003208	1.97	0.46	0.46	0.00	0.06
9 mm	D003209	1.97	0.51	0.51	0.00	0.06
10 mm	D003210	1.97	0.57	0.57	0.00	0.07
11 mm	D003211	1.97	0.62	0.62	0.00	0.09
12 mm	D003212	1.97	0.66	0.66	0.00	0.09
13 mm	D003213	1.97	0.70	0.70	0.00	0.11
14 mm	D003214	1.97	0.78	0.78	0.00	0.12

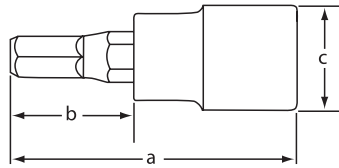
\* Meets A.N.S.I. standards



## Torx® Head Sockets-Standard Length

Size	Part No.	Overall Length (a) inches	Bit Length (b) inches	Drive End Width (c) inches	Net Weight (lbs)
T8	D002308	1.46	0.71	0.46	0.03
T9	D002309	1.46	0.71	0.46	0.03
T10	D002310	1.46	0.71	0.46	0.03
T15	D002315	1.46	0.71	0.46	0.03
T20	D002320	1.46	0.71	0.46	0.03
T25	D002325	1.46	0.71	0.46	0.03
T27	D002327	1.46	0.71	0.46	0.03
T30	D002330	1.46	0.71	0.46	0.03

\* Meets A.N.S.I. standards





# Sockets

## 13 Piece 6 Point Standard SAE Socket Set

Part No. D010000



**Set Content:**

13 Standard SAE Sockets: 1/4", 5/16", 3/8", 7/16", 1/2", 9/16", 5/8", 11/16", 3/4", 13/16", 7/8", 15/16", 1"  
Includes Rail.

---

## 13 Piece 6 Point Deep SAE Socket Set

Part No. D010001



**Set Content:**

13 Standard SAE Sockets: 1/4", 5/16", 3/8", 7/16", 1/2", 9/16", 5/8", 11/16", 3/4", 13/16", 7/8", 15/16", 1"  
Includes Rail.

---

## 13 Piece 12 Point Standard SAE Socket Set

Part No. D010002



**Set Content:**

13 Standard SAE Sockets: 1/4", 5/16", 3/8", 7/16", 1/2", 9/16", 5/8", 11/16", 3/4", 13/16", 7/8", 15/16", 1"  
Includes Rail.

## 13 Piece 12 Point Deep SAE Socket Set

Part No. D010003



**Set Content:**

13 Standard SAE Sockets: 1/4", 5/16", 3/8", 7/16", 1/2", 9/16", 5/8", 11/16", 3/4", 13/16", 7/8", 15/16", 1"  
Includes Rail.



# Sockets

## 14 Piece 6 Point Standard Metric Socket Set

Part No. D010004



**Set Content:**

14 Standard Metric Sockets: 6, 7, 8, 9, 10, 11, 12, 13, 14, 15, 16, 17, 18, 19mm  
Includes Rail.

---

## 14 Piece 6 Point Deep Metric Socket Set

Part No. D010005



**Set Content:**

14 Deep Metric Sockets: 6, 7, 8, 9, 10, 11, 12, 13, 14, 15, 16, 17, 18, 19mm  
Includes Rail.

---

## 14 Piece 12 Point Standard Metric Socket Set

Part No. D010006



**Set Content:**

14 Standard Metric Sockets: 6, 7, 8, 9, 10, 11, 12, 13, 14, 15, 16, 17, 18, 19mm  
Includes Rail.

## 14 Piece 12 Point Deep Metric Socket Set

Part No. D010007



**Set Content:**

14 Deep Metric Sockets: 6, 7, 8, 9, 10, 11, 12, 13, 14, 15, 16, 17, 18, 19mm  
Includes Rail.



# Sockets

## 7 Piece Standard Length SAE Hex Socket Set

Part No. D010014



**Set Content:**

7 SAE Hex Sockets: 1/8", 5/32", 3/16", 7/32", 1/4", 5/16", 3/8"  
Includes Rail.

---

## 7 Piece Long SAE Hex Socket Set

Part No. D010015



**Set Content:**

7 Long SAE Hex Sockets: 1/8", 5/32", 3/16", 7/32", 1/4", 5/16", 3/8"  
Includes Rail.

---

## 7 Piece Long SAE Ball Nose Hex Socket Set

Part No. D010024



**Set Content:**

7 SAE Long Ball Nose Hex Sockets: 1/8", 5/32", 3/16", 7/32", 1/4", 5/16", 3/8"  
Includes Rail.

## 7 Piece Standard Length Metric Hex Socket Set

Part No. D010016



**Set Content:**

7 Metric Hex Sockets: 4, 5, 6, 7, 8, 9, 10mm  
Includes Rail.



# Sockets

## 7 Piece Long Metric Hex Socket Set

Part No. D010017



**Set Content:**  
7 Long Metric Hex Sockets: 4, 5, 6, 7, 8, 9, 10mm  
Includes Rail.

---

## 7 Piece Long Metric Ball Nose Hex Socket Set

Part No. D010025



**Set Content:**  
7 Metric Long Ball Nose Hex Sockets: 4, 5, 6, 7, 8, 9, 10mm  
Includes Rail.

---



## 9 Piece Standard Length Torx® Socket Set

Part No. D010018



**Set Content:**

9 Torx® Sockets: T15, T20, T25, T27, T30, T40, T45, T50, T55  
Includes Rail.

## 9 Piece Long Torx® Socket Set

Part No. D010019



**Set Content:**

9 Long Torx® Sockets: T15, T20, T25, T27, T30, T40, T45, T50, T55  
Includes Rail.



# Sockets

## **7 Piece SAE Flex Head Crow Foot Socket Set**

**Part No. D010029**



**Set Content:**

**7 SAE Flex Head Crow Foot Sockets:  
3/8", 7/16", 1/2", 9/16", 5/8", 11/16", 3/4"**

---

## **10 Piece Metric Flex Head Crow Foot Socket Set**

**Part No. D010028**



**Set Content:**

**10 Metric Flex Head Crow Foot Sockets:  
10, 11, 12, 13, 14, 15, 16, 17, 18, 19 mm**

---

## 7 Piece 6 Point SAE U-Joint Socket Set

Part No. D010026



**Set Content:**

**7 U-Joint Sockets:**

3/8", 7/16", 1/2", 9/16", 5/8", 11/16", 3/4"

---

## 10 Piece 6 Point Metric U-Joint Socket Set

Part No. D010027



**Set Content:**

**10 Metric U-Joint Sockets:**

10, 11, 12, 13, 14, 15, 16, 17, 18, 19 mm

---



# Sockets

## 16 Piece 6 Point Standard SAE Socket Set

Part No. D010008



**Set Content:**

11 Standard SAE Sockets: 3/8", 7/16", 1/2", 9/16", 5/8", 11/16", 3/4", 13/16", 7/8", 15/16", 1"  
3" Extension, 6" Extension, Universal Joint, 8" Flex Handle, 45 Tooth Chrome Ratchet

Includes Metal Case.

## 27 Piece 6 Point Standard/Deep SAE Socket Set

Part No. D010009



**Set Content:**

11 Standard SAE Sockets: 3/8", 7/16", 1/2", 9/16", 5/8", 11/16", 3/4", 13/16", 7/8", 15/16", 1"  
11 Deep SAE Sockets: 3/8", 7/16", 1/2", 9/16", 5/8", 11/16", 3/4", 13/16", 7/8", 15/16", 1"  
3" Extension, 6" Extension, Universal Joint, 8" Flex Handle, 45 Tooth Chrome Ratchet

Includes Metal Case.

## 20 Piece 6 Point Standard Metric Socket Set

Part No. D010010



**Set Content:**

15 Standard Metric Sockets: 6, 7, 8, 9, 10, 11, 12, 13, 14, 15, 16, 17, 18, 19, 20mm  
3" Extension, 6" Extension, Universal Joint, 8" Flex Handle, 45 Tooth Chrome Ratchet



Includes Metal Case.

## 35 Piece 6 Point Standard/Deep Metric Socket Set

Part No. D010011



**Set Content:**

15 Standard Metric Sockets: 6, 7, 8, 9, 10, 11, 12, 13, 14, 15, 16, 17, 18, 19, 20mm  
15 Deep Metric Sockets: 6, 7, 8, 9, 10, 11, 12, 13, 14, 15, 16, 17, 18, 19, 20mm  
3" Extension, 6" Extension, Universal Joint, 8" Flex Handle, 45 Tooth Chrome Ratchet



Includes Metal Case.



# Sockets

## 60 Piece 6 Point Standard/Deep SAE/Metric Socket Set

Part No. D010012



**Set Content:**

- 13 Standard SAE Sockets: 1/4", 5/16", 3/8", 7/16", 1/2", 9/16", 5/8", 11/16", 3/4", 13/16", 7/8", 15/16", 1"
- 13 Deep SAE Sockets: 1/4", 5/16", 3/8", 7/16", 1/2", 9/16", 5/8", 11/16", 3/4", 13/16", 7/8", 15/16", 1"
- 14 Standard Metric Sockets: 6, 7, 8, 9, 10, 11, 12, 13, 14, 15, 16, 17, 18, 19mm
- 15 Deep Metric Sockets: 6, 7, 8, 9, 10, 11, 12, 13, 14, 15, 16, 17, 18, 19, 20mm
- 3" Extension, 6" Extension, Universal Joint, 8" Flex Handle, 45 Tooth Chrome Ratchet

Includes Blow Mold Case.

## 57 Piece 12 Point Standard/Deep SAE/Metric Socket Set

Part No. D010013



**Set Content:**

- 12 Standard SAE Sockets: 1/4", 5/16", 3/8", 7/16", 1/2", 9/16", 5/8", 11/16", 3/4", 7/8", 15/16", 1"
- 12 Deep SAE Sockets: 1/4", 5/16", 3/8", 7/16", 1/2", 9/16", 5/8", 11/16", 3/4", 7/8", 15/16", 1"
- 14 Standard Metric Sockets: 6, 7, 8, 9, 10, 11, 12, 13, 14, 15, 16, 17, 18, 19mm
- 14 Deep Metric Sockets: 6, 7, 8, 9, 10, 11, 12, 13, 14, 15, 16, 17, 18, 19mm
- 3" Extension, 6" Extension, Universal Joint, 8" Flex Handle, 45 Tooth Chrome Ratchet

Includes Blow Mold Case.

# Ratchets

## Quick Release Ratchet-Chrome Handle

Part No.	Length (inches)	Weight (lbs)	No. of Teeth
D005301	7.60	1.46	45



## Quick Release Ratchet-Comfort Handle

Part No.	Length (inches)	Weight (lbs)	No. of Teeth
D005302	7.60	0.55	72



## Quick Release Ratchet-Comfort Handle

Part No.	Length (inches)	Weight (lbs)	No. of Teeth
D005306	9.00	0.85	72



## Stubby Ratchet

Part No.	Length (inches)	Weight (lbs)	No. of Teeth
D005307	4.75	0.44	48



## Flex Head Ratchet

Part No.	Length (inches)	Weight (lbs)	No. of Teeth
D005308	11.75	0.85	48



## Dynamic Swivel Head Ratchets. Accessibility and Convenience that Make Your Job Easier





### Flex Handle

Part No.	Length (inches)	Weight (lbs)
D005800	7.87	0.47



### Chrome Extension

Part No.	Length (inches)	Weight (lbs)
D005003	3.00	0.17
D005006	6.00	0.30
D005010	10.00	0.54



### Chrome Extension with Quick Release

Part No.	Length (inches)	Weight (lbs)
D005023	3.00	0.18
D005026	6.00	0.33
D005030	10.00	0.52



### Sliding T-Handle

Part No.	Length (inches)	Weight (lbs)
D005500	6.46	0.09



### Universal Joint

Part No.	Length (inches)	Weight (lbs)
D005601	1.81	0.13



### Adapter

Part No.	Length (inches)	Female (inches)	Male (inches)	Weight (lbs)
D005701	1.38	3/8	1/4	0.07
D005702	1.81	3/8	1/2	0.10



### Spark Plug Socket

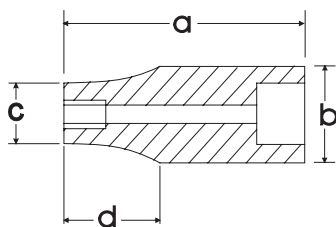
Part No.	Size (inches)	Length (inches)	Weight (lbs)
D005401	5/8	2.48	0.21
D005402	13/16	2.48	0.28



## SAE Standard Chrome Sockets

Size			Overall Length (a) inches	Drive End (b) inches	Hex End (c) inches	Taper Length (d) inches	Net Weight (lbs)
	Part No.	Part No.					
1/4"	D008308	D009408	1.10	0.66	0.39	0.47	0.05
5/16"	D008310	D009410	1.10	0.66	0.47	0.47	0.05
3/8"	D008312	D009412	1.10	0.66	0.54	0.47	0.06
7/16"	D008314	D009414	1.10	0.66	0.63	0.47	0.06
1/2"	D008316	D009416	1.10	0.70	0.70	0.00	0.07
9/16"	D008318	D009418	1.10	0.78	0.78	0.00	0.08
5/8"	D008320	D009420	1.10	0.86	0.86	0.00	0.10
11/16"	D008322	D009422	1.18	0.94	0.94	0.00	0.10
3/4"	D008324	D009424	1.18	1.02	1.02	0.00	0.12
13/16"	D008326	D009426	1.18	1.09	1.09	0.00	0.16
7/8"	D008328	D009428	1.18	1.17	1.17	0.00	0.16
15/16"	D008330	D009430	1.18	1.25	1.25	0.00	0.19
1"	D008332	D009432	1.18	1.33	1.33	0.00	0.21

\* Meets A.N.S.I. standards



## SAE Deep Chrome Sockets

Size			Overall Length (a) inches	Drive End (b) inches	Hex End (c) inches	Taper Length (d) inches	Net Weight (lbs)
	Part No.	Part No.					
1/4"	D008508	D009608	2.48	0.66	0.39	1.50	0.09
5/16"	D008510	D009610	2.48	0.66	0.47	1.50	0.10
3/8"	D008512	D009612	2.48	0.66	0.54	1.50	0.11
7/16"	D008514	D009614	2.48	0.66	0.63	1.50	0.11
1/2"	D008516	D009616	2.48	0.74	0.74	0.00	0.11
9/16"	D008518	D009618	2.48	0.78	0.78	0.00	0.16
5/8"	D008520	D009620	2.48	0.86	0.86	0.00	0.19
11/16"	D008522	D009622	2.48	0.94	0.94	0.00	0.23
3/4"	D008524	D009624	2.48	1.02	1.02	0.00	0.27
13/16"	D008526	D009626	2.48	1.09	1.09	0.00	0.43
7/8"	D008528	D009628	2.48	1.17	1.17	0.00	0.49
15/16"	D008530	D009630	2.48	1.25	1.25	0.00	0.54
1"	D008532	D009632	2.48	1.33	1.33	0.00	0.57

\* Meets A.N.S.I. standards

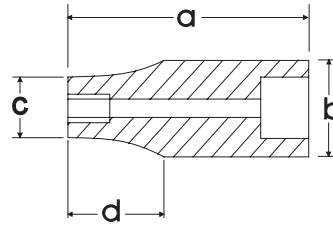




## Metric Standard Chrome Sockets

Size	6 POINT Part No.	12 POINT Part No.	Overall Length (a) inches	Drive End (b) inches	Hex End (c) inches	Taper Length (d) inches	Net Weight (lbs)
6 mm	D008006	D009106	1.10	0.66	0.39	0.47	0.05
7 mm	D008007	D009107	1.10	0.66	0.43	0.47	0.05
8 mm	D008008	D009108	1.10	0.66	0.47	0.47	0.05
9 mm	D008009	D009109	1.10	0.66	0.52	0.47	0.05
10 mm	D008010	D009110	1.10	0.66	0.58	0.47	0.05
11 mm	D008011	D009111	1.10	0.66	0.62	0.47	0.06
12 mm	D008012	D009112	1.10	0.66	0.66	0.00	0.06
13 mm	D008013	D009113	1.10	0.70	0.70	0.00	0.06
14 mm	D008014	D009114	1.10	0.78	0.78	0.00	0.08
15 mm	D008015	D009115	1.10	0.86	0.86	0.00	0.10
16 mm	D008016	D009116	1.10	0.86	0.86	0.00	0.10
17 mm	D008017	D009117	1.18	0.94	0.94	0.00	0.10
18 mm	D008018	D009118	1.18	1.02	1.02	0.00	0.10
19 mm	D008019	D009119	1.18	1.02	1.02	0.00	0.12
20 mm	D008020	D009120	1.18	1.09	1.09	0.00	0.15
21 mm	D008021	D009121	1.18	1.09	1.09	0.00	0.15
22 mm	D008022	D009122	1.18	1.17	1.17	0.00	0.16
23 mm	D008023	D009123	1.18	1.25	1.25	0.00	0.16
24 mm	D008024		1.18	1.25	1.25	0.00	0.17

\* Meets A.N.S.I. standards



## Metric Deep Chrome Sockets

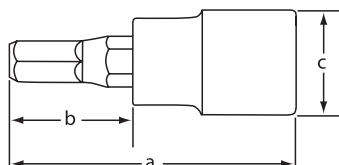
Size	6 POINT Part No.	12 POINT Part No.	Overall Length (a) inches	Drive End (b) inches	Hex End (c) inches	Taper Length (d) inches	Net Weight (lbs)
6 mm	D008206	D009706	2.48	0.66	0.39	1.50	0.09
7 mm	D008207	D009707	2.48	0.66	0.43	1.50	0.09
8 mm	D008208	D009708	2.48	0.66	0.47	1.50	0.09
9 mm	D008209	D009709	2.48	0.66	0.52	1.50	0.10
10 mm	D008210	D009710	2.48	0.66	0.58	1.50	0.10
11 mm	D008211	D009711	2.48	0.66	0.62	1.50	0.11
12 mm	D008212	D009712	2.48	0.70	0.70	0.00	0.11
13 mm	D008213	D009713	2.48	0.74	0.74	0.00	0.13
14 mm	D008214	D009714	2.48	0.78	0.78	0.00	0.16
15 mm	D008215	D009715	2.48	0.86	0.86	0.00	0.18
16 mm	D008216	D009716	2.48	0.86	0.86	0.00	0.20
17 mm	D008217	D009717	2.48	0.94	0.94	0.00	0.23
18 mm	D008218	D009718	2.48	1.02	1.02	0.00	0.25
19 mm	D008219	D009719	2.48	1.02	1.02	0.00	0.27
20 mm	D008220		2.48	1.09	1.09	0.00	0.33
21 mm	D008221		2.48	1.09	1.09	0.00	0.34
22 mm	D008222		2.48	1.17	1.17	0.00	0.37
23 mm	D008223		2.48	1.25	1.25	0.00	0.38

\* Meets A.N.S.I. standards

## Hex Head Sockets SAE-Standard Length

Size	Part No.	Overall Length (a) inches	Bit Length (b) inches	Drive End Width (c) inches	Net Weight (lbs)
1/8"	D006052	1.89	0.87	0.70	0.09
5/32"	D006053	1.89	0.87	0.70	0.09
3/16"	D006054	1.89	0.87	0.70	0.09
7/32"	D006056	1.89	0.87	0.70	0.10
1/4"	D006058	1.89	0.87	0.70	0.10
5/16"	D006060	1.89	0.87	0.70	0.10
3/8"	D006062	1.89	0.87	0.70	0.13

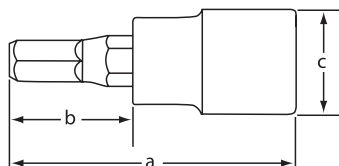
\* Meets A.N.S.I. standards



## Hex Head Sockets SAE-Long

Size	Part No.	Overall Length (a) inches	Bit Length (b) inches	Drive End Width (c) inches	Net Weight (lbs)
1/8"	D006452	3.62	2.60	0.70	0.17
5/32"	D006453	3.62	2.60	0.70	0.17
3/16"	D006454	3.62	2.60	0.70	0.17
7/32"	D006456	3.62	2.60	0.70	0.17
1/4"	D006458	3.62	2.60	0.70	0.17
5/16"	D006460	3.62	2.60	0.70	0.17
3/8"	D006462	3.62	2.60	0.70	0.26

\* Meets A.N.S.I. standards



## Hex Head Ball Nose Sockets SAE-Long

Size	Part No.	Overall Length (a) inches	Bit Length (b) inches	Drive End Width (c) inches	Net Weight (lbs)
1/8"	D006952	3.62	2.60	0.70	0.17
5/32"	D006953	3.62	2.60	0.70	0.17
3/16"	D006954	3.62	2.60	0.70	0.17
7/32"	D006956	3.62	2.60	0.70	0.17
1/4"	D006958	3.62	2.60	0.70	0.17
5/16"	D006960	3.62	2.60	0.70	0.17
3/8"	D006962	3.62	2.60	0.70	0.26

\* Meets A.N.S.I. standards

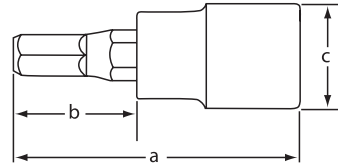




### Hex Head Sockets Metric-Standard Length

Size	Part No.	Overall Length (a) inches	Bit Length (b) inches	Drive End Width (c) inches	Net Weight (lbs)
4 mm	D006004	1.89	0.87	0.70	0.09
5 mm	D006005	1.89	0.87	0.70	0.09
6 mm	D006006	1.89	0.87	0.70	0.10
7 mm	D006007	1.89	0.87	0.70	0.10
8 mm	D006008	1.89	0.87	0.70	0.10
9 mm	D006009	1.89	0.87	0.70	0.11
10 mm	D006010	1.89	0.87	0.70	0.13

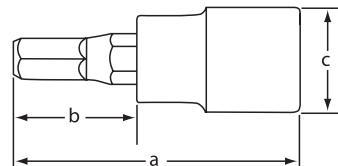
\* Meets A.N.S.I. standards



### Hex Head Sockets Metric-Long

Size	Part No.	Overall Length (a) inches	Bit Length (b) inches	Drive End Width (c) inches	Net Weight (lbs)
4 mm	D006404	3.62	2.60	0.70	0.17
5 mm	D006405	3.62	2.60	0.70	0.17
6 mm	D006406	3.62	2.60	0.70	0.17
7 mm	D006407	3.62	2.60	0.70	0.17
8 mm	D006408	3.62	2.60	0.70	0.17
9 mm	D006409	3.62	2.60	0.70	0.17
10 mm	D006410	3.62	2.60	0.70	0.26

\* Meets A.N.S.I. standards



### Hex Head Ball Nose Sockets Metric-Long

Size	Part No.	Overall Length (a) inches	Bit Length (b) inches	Drive End Width (c) inches	Net Weight (lbs)
4 mm	D006904	3.62	2.60	0.70	0.17
5 mm	D006905	3.62	2.60	0.70	0.17
6 mm	D006906	3.62	2.60	0.70	0.17
7 mm	D006907	3.62	2.60	0.70	0.17
8 mm	D006908	3.62	2.60	0.70	0.17
9 mm	D006909	3.62	2.60	0.70	0.17
10 mm	D006910	3.62	2.60	0.70	0.26

\* Meets A.N.S.I. standards

## Slot Head Sockets-Standard Length

Size	Part No.	Overall Length (a) inches	Bit Length (b) inches	Drive End Width (c) inches	Net Weight (lbs)
SL5	D006105	1.89	0.87	0.70	0.11
SL6	D006106	1.89	0.87	0.70	0.11
SL7	D006107	1.89	0.87	0.70	0.11
SL8	D006108	1.89	0.87	0.70	0.11

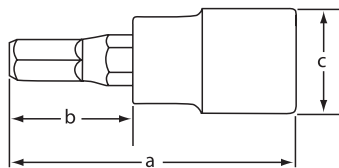
\* Meets A.N.S.I. standards



## Phillips® Head Sockets-Standard Length

Size	Part No.	Overall Length (a) inches	Bit Length (b) inches	Drive End Width (c) inches	Net Weight (lbs)
PH1	D006201	1.89	0.87	0.70	0.09
PH2	D006202	1.89	0.87	0.70	0.09
PH3	D006203	1.89	0.87	0.70	0.09
PH4	D006204	1.89	0.87	0.70	0.09

\* Meets A.N.S.I. standards



## Torx® Head Sockets-Regular Length

Size	Part No.	Overall Length (a) inches	Bit Length (b) inches	Drive End Width (c) inches	Net Weight (lbs)
T15	D006315	1.89	0.87	0.70	0.11
T20	D006320	1.89	0.87	0.70	0.11
T25	D006325	1.89	0.87	0.70	0.11
T27	D006327	1.89	0.87	0.70	0.11
T30	D006330	1.89	0.87	0.70	0.11
T40	D006340	1.89	0.87	0.70	0.11
T45	D006345	1.89	0.87	0.70	0.11
T50	D006350	1.89	0.87	0.70	0.11
T55	D006355	1.89	0.87	0.70	0.11

\* Meets A.N.S.I. standards



## Torx® Head Sockets-Long

Size	Part No.	Overall Length (a) inches	Bit Length (b) inches	Drive End Width (c) inches	Net Weight (lbs)
T15	D006715	3.62	2.60	0.70	0.17
T20	D006720	3.62	2.60	0.70	0.17
T25	D006725	3.62	2.60	0.70	0.17
T27	D006727	3.62	2.60	0.70	0.17
T30	D006730	3.62	2.60	0.70	0.17
T40	D006740	3.62	2.60	0.70	0.17
T45	D006745	3.62	2.60	0.70	0.20
T50	D006750	3.62	2.60	0.70	0.20
T55	D006755	3.62	2.60	0.70	0.20

\* Meets A.N.S.I. standards





# Sockets



## SAE Flex Head Crow Foot Sockets

Size	Part No.	Overall Length (inches)	Drive End Width (inches)	Net Weight (lbs)
3/8"	D008642	1.93	0.75	0.10
7/16"	D008644	2.09	0.75	0.12
1/2"	D008646	2.09	0.75	0.12
9/16"	D008648	2.36	0.75	0.17
5/8"	D008650	2.89	0.98	0.33
11/16"	D008652	2.89	0.98	0.32
3/4"	D008654	2.89	0.98	0.32

\* Meets A.N.S.I. standards




## Metric Flex Head Crow Foot Sockets

Size	Part No.	Overall Length (inches)	Drive End Width (inches)	Net Weight (lbs)
10 mm	D008760	1.93	0.75	0.10
11 mm	D008761	2.09	0.75	0.12
12 mm	D008762	2.09	0.75	0.12
13 mm	D008763	2.36	0.75	0.17
14 mm	D008764	2.36	0.75	0.17
15 mm	D008765	2.36	0.75	0.16
16 mm	D008766	2.89	0.98	0.33
17 mm	D008767	2.89	0.98	0.33
18 mm	D008768	2.89	0.98	0.32
19 mm	D008769	2.89	0.98	0.31

\* Meets A.N.S.I. standards


## SAE U-Joint Sockets

Size	 Part No.	Overall Length (inches)	Drive End Width (inches)	Net Weight (lbs)
3/8"	D008612	1.73	0.75	0.12
7/16"	D008614	1.81	0.75	0.12
1/2"	D008616	1.93	0.75	0.13
9/16"	D008618	1.93	0.75	0.13
5/8"	D008620	1.93	0.75	0.14
11/16"	D008622	1.93	0.75	0.16
3/4"	D008624	2.01	0.75	0.16

\* Meets A.N.S.I. standards



## Metric U-Joint Sockets

Size	 Part No.	Overall Length (inches)	Drive End Width (inches)	Net Weight (lbs)
10 mm	D008710	1.73	0.75	0.12
11 mm	D008711	1.81	0.75	0.12
12 mm	D008712	1.81	0.75	0.13
13 mm	D008713	1.93	0.75	0.13
14 mm	D008714	1.93	0.75	0.13
15 mm	D008715	1.93	0.75	0.14
16 mm	D008716	1.93	0.75	0.14
17 mm	D008717	1.93	0.75	0.16
18 mm	D008718	2.01	0.75	0.16
19 mm	D008719	2.01	0.75	0.16

\* Meets A.N.S.I. standards





# Sockets

## 8 Piece 6 Point Standard SAE Impact Socket Set

Part No. D010020



**Set Content:**

8 Standard SAE Impact Sockets: 5/16", 3/8", 7/16", 1/2", 9/16", 5/8", 11/16", 3/4"  
Includes Rail.

---

## 8 Piece 6 Point Deep SAE Impact Socket Set

Part No. D010021



**Set Content:**

8 Deep SAE Impact Sockets: 5/16", 3/8", 7/16", 1/2", 9/16", 5/8", 11/16", 3/4"  
Includes Rail.

---



## 12 Piece 6 Point Standard Metric Impact Socket Set

Part No. D010022



**Set Content:**

12 Standard Metric Impact Sockets: 8, 9, 10, 11, 12, 13, 14, 15, 16, 17, 18, 19mm  
Includes Rail.

## 12 Piece 6 Point Deep Metric Impact Socket Set

Part No. D010023



**Set Content:**


12 Deep Metric Impact Sockets: 8, 9, 10, 11, 12, 13, 14, 15, 16, 17, 18, 19mm  
Includes Rail.



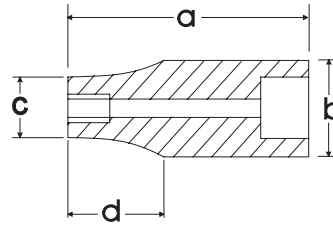
# Sockets




## SAE Standard Impact Sockets

Size	 Part No.	Overall Length (a) inches	Drive End Width (b) inches	Hex End Length (c) inches	Taper Length (d) inches	Net Weight (lbs)
5/16"	D007310	1.12	0.74	0.49	0.47	0.08
3/8"	D007312	1.12	0.74	0.54	0.47	0.08
7/16"	D007314	1.18	0.74	0.58	0.47	0.09
1/2"	D007316	1.18	0.74	0.67	0.47	0.09
9/16"	D007318	1.18	0.78	0.78	0.00	0.09
5/8"	D007320	1.18	0.94	0.94	0.00	0.15
11/16"	D007322	1.24	0.94	0.94	0.00	0.15
3/4"	D007324	1.24	1.02	1.02	0.00	0.17

\* Meets A.N.S.I. standards



## SAE Deep Impact Sockets

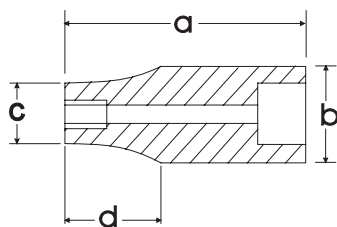
Size	 Part No.	Overall Length (a) inches	Drive End Width (b) inches	Hex End Length (c) inches	Taper Length (d) inches	Net Weight (lbs)
5/16"	D007510	2.48	0.74	0.49	0.51	0.21
3/8"	D007512	2.48	0.74	0.54	0.51	0.21
7/16"	D007514	2.48	0.74	0.58	0.51	0.21
1/2"	D007516	2.48	0.74	0.67	0.51	0.21
9/16"	D007518	2.48	0.78	0.78	0.00	0.22
5/8"	D007520	2.48	0.94	0.94	0.00	0.29
11/16"	D007522	2.48	0.94	0.94	0.00	0.29
3/4"	D007524	2.48	1.02	1.02	0.00	0.32

\* Meets A.N.S.I. standards

## Metric Standard Impact Sockets

Size	Part No.	Overall Length (a) inches	Drive End Width (b) inches	Hex End Length (c) inches	Taper Length (d) inches	Net Weight (lbs)
8 mm	D007008	1.12	0.74	0.49	0.47	0.08
9 mm	D007009	1.12	0.74	0.55	0.47	0.08
10 mm	D007010	1.12	0.74	0.59	0.47	0.08
11 mm	D007011	1.12	0.74	0.67	0.47	0.09
12 mm	D007012	1.12	0.74	0.74	0.00	0.09
13 mm	D007013	1.12	0.74	0.74	0.00	0.09
14 mm	D007014	1.12	0.78	0.78	0.00	0.09
15 mm	D007015	1.12	0.86	0.86	0.00	0.11
16 mm	D007016	1.12	0.94	0.94	0.00	0.15
17 mm	D007017	1.12	0.94	0.94	0.00	0.15
18 mm	D007018	1.12	1.00	1.00	0.00	0.15
19 mm	D007019	1.12	1.02	1.02	0.00	0.17

\* Meets A.N.S.I. standards



## Metric Deep Impact Sockets

Size	Part No.	Overall Length (a) inches	Drive End Width (b) inches	Hex End Length (c) inches	Taper Length (d) inches	Net Weight (lbs)
8 mm	D007208	2.48	0.74	0.49	0.51	0.21
9 mm	D007209	2.48	0.74	0.55	0.51	0.21
10 mm	D007210	2.48	0.74	0.59	0.51	0.21
11 mm	D007211	2.48	0.74	0.67	0.51	0.21
12 mm	D007212	2.48	0.74	0.74	0.00	0.21
13 mm	D007213	2.48	0.74	0.74	0.00	0.21
14 mm	D007214	2.48	0.78	0.78	0.00	0.22
15 mm	D007215	2.48	0.86	0.86	0.00	0.24
16 mm	D007216	2.48	0.94	0.94	0.00	0.29
17 mm	D007217	2.48	0.94	0.94	0.00	0.29
18 mm	D007218	2.48	1.00	1.00	0.00	0.32
19 mm	D007219	2.48	1.02	1.02	0.00	0.32

\* Meets A.N.S.I. standards





# Sockets

## 16 Piece 6 Point Standard SAE Socket Set

Part No. D018000



**Set Content:**

16 Standard SAE Sockets: 3/8", 7/16", 1/2", 9/16", 5/8", 11/16", 3/4", 13/16", 7/8", 15/16", 1", 1-1/16", 1-1/8", 1-3/16", 1-1/4", 1-5/16"

Includes Rail.

---

## 16 Piece 6 Point Deep SAE Socket Set

Part No. D018001



**Set Content:**

16 Deep SAE Sockets: 3/8", 7/16", 1/2", 9/16", 5/8", 11/16", 3/4", 13/16", 7/8", 15/16", 1", 1-1/16", 1-1/8", 1-3/16", 1-1/4", 1-5/16"

Includes Rail.

---

## 16 Piece 12 Point Standard SAE Socket Set

Part No. D018002



**Set Content:**

16 Standard SAE Sockets: 3/8", 7/16", 1/2", 9/16", 5/8", 11/16", 3/4", 13/16", 7/8", 15/16", 1", 1-1/16", 1-1/8", 1-3/16", 1-1/4", 1-5/16"

Includes Rail.

## 16 Piece 12 Point Deep SAE Socket Set

Part No. D018003



**Set Content:**

16 Deep SAE Sockets: 3/8", 7/16", 1/2", 9/16", 5/8", 11/16", 3/4", 13/16", 7/8", 15/16", 1", 1-1/16", 1-1/8", 1-3/16", 1-1/4", 1-5/16"

Includes Rail.



# Sockets

## 19 Piece 6 Point Standard Metric Socket Set

Part No. D018004



**Set Content:**

19 Standard Metric Sockets: 10, 11, 12, 13, 14, 15, 16, 17, 18, 19, 20, 21, 22, 23, 24, 25, 26, 27, 28mm  
Includes Rail.

---

## 19 Piece 6 Point Deep Metric Socket Set

Part No. D018005



**Set Content:**

19 Deep Metric Sockets: 10, 11, 12, 13, 14, 15, 16, 17, 18, 19, 20, 21, 22, 23, 24, 25, 26, 27, 28mm  
Includes Rail.

---

## 19 Piece 12 Point Standard Metric Socket Set

Part No. D018006



**Set Content:**

19 Standard Metric Sockets: 10, 11, 12, 13, 14, 15, 16, 17, 18, 19, 20, 21, 22, 23, 24, 25, 26, 27, 28mm  
Includes Rail.

---

## 18 Piece 12 Point Deep Metric Socket Set

Part No. D018007



**Set Content:**

18 Deep Metric Sockets: 10, 11, 12, 13, 14, 15, 16, 17, 18, 19, 20, 21, 22, 23, 24, 25, 26, 27mm  
Includes Rail.

---



# Sockets

## 8 Piece Standard Length SAE Hex Socket Set

Part No. D018018



**Set Content:**

**8 SAE Hex Sockets: 1/4", 5/16", 3/8", 7/16", 1/2", 9/16", 5/8", 3/4"**

**Includes Rail.**

## 8 Piece Long SAE Hex Socket Set

Part No. D018019



**Set Content:**

**8 SAE Long Hex Sockets: 1/4", 5/16", 3/8", 7/16", 1/2", 9/16", 5/8", 3/4"**

**Includes Rail.**



## 7 Piece Standard Length Metric Hex Socket Set

Part No. D018014



**Set Content:**

7 Metric Hex Sockets: 6, 8, 10, 12, 14, 17, 19mm

Includes Rail.

## 7 Piece Long Metric Hex Socket Set

Part No. D018015



**Set Content:**

7 Long Metric Hex Sockets: 6, 8, 10, 12, 14, 17, 19mm

Includes Rail.



# Sockets

## 7 Piece Standard Length Torx® Socket Set

Part No. D018016



**Set Content:**

7 Torx® Sockets: T20, T25, T27, T30, T40, T45, T50

Includes Rail.

## 7 Piece Long Torx® Socket Set

Part No. D018017



**Set Content:**

7 Long Torx® Sockets: T20, T25, T27, T30, T40, T45, T50

Includes Rail.

## 22 Piece 6 Point Standard SAE Socket Set

Part No. D018008



**Set Content:**

16 Standard SAE Sockets: 3/8", 7/16", 1/2", 9/16", 5/8", 11/16", 3/4", 13/16", 7/8", 15/16", 1", 1-1/16", 1-1/8", 1-3/16", 1-1/4", 1-5/16"

5" Extension, 10" Extension, 45 Tooth Ratchet, Universal Joint, Flex Handle, T-Handle

Includes Metal Case.

## 25 Piece 6 Point Standard Metric Socket Set

Part No. D018009



**Set Content:**

19 Standard Metric Sockets: 10, 11, 12, 13, 14, 15, 16, 17, 18, 19, 20, 21, 22, 23, 24, 25, 26, 27, 28mm

5" Extension, 10" Extension, 45 Tooth Ratchet, Universal Joint, Flex Handle, T-Handle

Includes Metal Case.



# Sockets

## 38 Piece 6 Point Standard/Deep SAE Socket Set

Part No. D018012



**Set Content:**

16 Standard SAE Sockets: 3/8", 7/16", 1/2", 9/16", 5/8", 11/16", 3/4", 13/16", 7/8", 15/16", 1", 1-1/16", 1-1/8", 1-3/16", 1-1/4", 1-5/16"

16 Deep SAE Sockets: 3/8", 7/16", 1/2", 9/16", 5/8", 11/16", 3/4", 13/16", 7/8", 15/16", 1", 1-1/16", 1-1/8", 1-3/16", 1-1/4", 1-5/16"

5" Extension, 10" Extension, 45 Tooth Ratchet, Universal Joint, Flex Handle, T-Handle

Includes Blow Mold Case.

## 43 Piece 6 Point Standard/Deep Metric Socket Set

Part No. D018013



**Set Content:**

19 Standard Metric Sockets: 10, 11, 12, 13, 14, 15, 16, 17, 18, 19, 20, 21, 22, 23, 24, 25, 26, 27, 28mm

18 Deep Metric Sockets: 10, 12, 13, 14, 15, 16, 17, 18, 19, 20, 21, 22, 23, 24, 25, 26, 27, 28mm

5" Extension, 10" Extension, 45 Tooth Ratchet, Universal Joint, Flex Handle, T-Handle

Includes Blow Mold Case.

## 41 Piece 6 Point Standard SAE/Metric Socket Set

Part No. D018010



**Set Content:**

16 Standard SAE Sockets: 3/8", 7/16", 1/2", 9/16", 5/8", 11/16", 3/4", 13/16", 7/8", 15/16", 1", 1-1/16", 1-1/8", 1-3/16", 1-1/4", 1-5/16"

19 Standard Metric Sockets: 10, 11, 12, 13, 14, 15, 16, 17, 18, 19, 20, 21, 22, 23, 24, 25, 26, 27, 28mm  
5" Extension, 10" Extension, 45 Tooth Ratchet, Universal Joint, Flex Handle, T-Handle

Includes Blow Mold Case.

## 41 Piece 12 Point Standard SAE/Metric Socket Set

Part No. D018011



**Set Content:**

16 Standard SAE Sockets: 3/8", 7/16", 1/2", 9/16", 5/8", 11/16", 3/4", 13/16", 7/8", 15/16", 1", 1-1/16", 1-1/8", 1-3/16", c1-1/4", 1-5/16"

19 Standard Metric Sockets: 10, 11, 12, 13, 14, 15, 16, 17, 18, 19, 20, 21, 22, 23, 24, 25, 26, 27, 28mm  
5" Extension, 10" Extension, 45 Tooth Ratchet, Universal Joint, Flex Handle, T-Handle

Includes Blow Mold Case.



# Ratchets & Attachments



## Quick Release Ratchet-Chrome Handle

Part No.	Length (inches)	Weight (lbs)	No. of Teeth
D012301	9.33	1.46	45

## Quick Release Ratchet-Comfort Handle

Part No.	Length (inches)	Weight (lbs)	No. of Teeth
D012302	9.76	1.46	72

## Flex Head Ratchet

Part No.	Length (inches)	Weight (lbs)	No. of Teeth
D012308	17.75	2.12	48

## Flex Handle

Part No.	Length (inches)	Weight (lbs)
D012800	14.96	1.41

## Chrome Extension

Part No.	Length (inches)	Weight (lbs)
D012005	5.00	0.50
D012010	10.00	0.97

## Chrome Extension with Quick Release

Part No.	Length (inches)	Weight (lbs)
D012023	3.00	0.30
D012025	5.00	0.50
D012030	10.00	0.94

## Sliding T-Handle

Part No.	Length (inches)	Weight (lbs)
D012500	9.75	0.15

## Universal Joint

Part No.	Length (inches)	Weight (lbs)
D012600	2.76	0.33

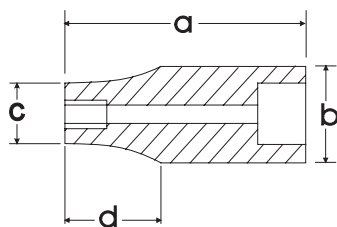
## Adapter

Part No.	Length (inches)	Female	Male	Weight (lbs)
D012701	1.42	1/2"	3/8"	0.15

## SAE Standard Chrome Sockets

Size	Drive		Overall Length (a) inches	Drive End (b) inches	Hex End (c) inches	Taper Length (d) inches	Net Weight (lbs)
	6 POINT	12 POINT					
3/8"	D016312	D015412	1.50	0.86	0.57	0.67	0.12
7/16"	D016314	D015414	1.50	0.86	0.67	0.67	0.12
1/2"	D016316	D015416	1.50	0.86	0.73	0.67	0.12
9/16"	D016318	D015418	1.50	0.86	0.81	0.67	0.12
5/8"	D016320	D015420	1.50	0.86	0.86	0.00	0.13
11/16"	D016322	D015422	1.50	0.94	0.94	0.00	0.14
3/4"	D016324	D015424	1.50	1.02	1.02	0.00	0.15
13/16"	D016326	D015426	1.50	1.09	1.09	0.00	0.17
7/8"	D016328	D015428	1.50	1.17	1.17	0.00	0.21
15/16"	D016330	D015430	1.57	1.25	1.25	0.00	0.24
1"	D016332	D015432	1.65	1.33	1.33	0.00	0.31
1-1/16"	D016334	D015434	1.65	1.41	1.41	0.00	0.32
1-1/8"	D016336	D015436	1.69	1.49	1.49	0.00	0.32
1-3/16"	D016338	D015438	1.73	1.57	1.57	0.00	0.37
1-1/4"	D016340	D015440	1.73	1.65	1.65	0.00	0.41
1-5/16"	D016342	D015442	1.73	1.72	1.72	0.00	0.43

\* Meets A.N.S.I. standards



## SAE Deep Chrome Sockets

Size	Drive		Overall Length (a) inches	Drive End (b) inches	Hex End (c) inches	Taper Length (d) inches	Net Weight (lbs)
	6 POINT	12 POINT					
3/8"	D016512	D015612	3.03	0.86	0.52	1.81	0.17
7/16"	D016514	D015614	3.03	0.86	0.57	1.81	0.17
1/2"	D016516	D015616	3.03	0.86	0.67	1.81	0.18
9/16"	D016518	D015618	3.03	0.86	0.73	1.81	0.21
5/8"	D016520	D015620	3.03	0.86	0.81	1.81	0.23
11/16"	D016522	D015622	3.03	0.86	0.86	0.00	0.27
3/4"	D016524	D015624	3.03	0.94	0.94	0.00	0.29
13/16"	D016526	D015626	3.03	1.02	1.02	0.00	0.36
7/8"	D016528	D015628	3.03	1.09	1.09	0.00	0.46
15/16"	D016530	D015630	3.03	1.17	1.17	0.00	0.49
1"	D016532	D015632	3.03	1.25	1.25	0.00	0.54
1-1/16"	D016534	D015634	3.03	1.33	1.33	0.00	0.56
1-1/8"	D016536	D015636	3.03	1.41	1.41	0.00	0.65
1-3/16"	D016538	D015638	3.03	1.49	1.49	0.00	0.73
1-1/4"	D016540	D015640	3.03	1.65	1.65	0.00	0.93
1-5/16"	D016542	D015642	3.03	1.72	1.72	0.00	0.99

\* Meets A.N.S.I. standards

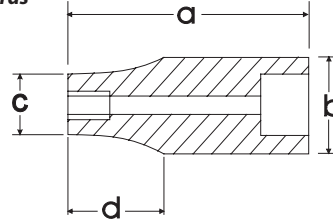




## Metric Standard Chrome Sockets

Size	6 POINT Part No.	12 POINT Part No.	Overall Length (a) inches	Drive End (b) inches	Hex End (c) inches	Taper Length (d) inches	Net Weight (lbs)
10 mm	D016010	D015110	1.50	0.86	0.59	0.67	0.11
11 mm	D016011	D015111	1.50	0.86	0.64	0.67	0.11
12 mm	D016012	D015112	1.50	0.86	0.69	0.67	0.12
13 mm	D016013	D015113	1.50	0.86	0.74	0.67	0.12
14 mm	D016014	D015114	1.50	0.86	0.80	0.67	0.12
15 mm	D016015	D015115	1.50	0.86	0.83	0.67	0.12
16 mm	D016016	D015116	1.50	0.86	0.86	0.00	0.13
17 mm	D016017	D015117	1.50	0.94	0.94	0.00	0.14
18 mm	D016018	D015118	1.50	1.02	1.02	0.00	0.17
19 mm	D016019	D015119	1.50	1.02	1.02	0.00	0.17
20 mm	D016020	D015120	1.50	1.09	1.09	0.00	0.18
21 mm	D016021	D015121	1.50	1.09	1.09	0.00	0.21
22 mm	D016022	D015122	1.50	1.17	1.17	0.00	0.21
23 mm	D016023	D015123	1.57	1.25	1.25	0.00	0.26
24 mm	D016024	D015124	1.57	1.25	1.25	0.00	0.26
25 mm	D016025	D015125	1.57	1.33	1.33	0.00	0.26
26 mm	D016026	D015126	1.65	1.33	1.33	0.00	0.30
27 mm	D016027	D015127	1.65	1.41	1.41	0.00	0.32
28 mm	D016028	D015128	1.69	1.49	1.49	0.00	0.36
29 mm	D016029		1.69	1.49	1.49	0.00	0.36
30 mm	D016030	D015130	1.73	1.57	1.57	0.00	0.38
31 mm	D016031		1.73	1.57	1.57	0.00	0.38
32 mm	D016032	D015132	1.73	1.65	1.65	0.00	0.39

\* Meets A.N.S.I. standards



## Metric Deep Chrome Sockets

Size	6 POINT Part No.	12 POINT Part No.	Overall Length (a) inches	Drive End (b) inches	Hex End (c) inches	Taper Length (d) inches	Net Weight (lbs)
10 mm	D016210	D015710	3.03	0.86	0.59	1.81	0.17
11 mm	D016211	D015711	3.03	0.86	0.64	1.81	0.18
12 mm	D016212	D015712	3.03	0.86	0.69	1.81	0.19
13 mm	D016213	D015713	3.03	0.86	0.74	1.81	0.21
14 mm	D016214	D015714	3.03	0.86	0.80	1.81	0.23
15 mm	D016215	D015715	3.03	0.86	0.83	1.81	0.24
16 mm	D016216	D015716	3.03	0.86	0.86	0.00	0.27
17 mm	D016217	D015717	3.03	0.94	0.94	0.00	0.29
18 mm	D016218	D015718	3.03	1.02	1.02	0.00	0.35
19 mm	D016219	D015719	3.03	1.02	1.02	0.00	0.36
20 mm	D016220	D015720	3.03	1.09	1.09	0.00	0.38
21 mm	D016221	D015721	3.03	1.09	1.09	0.00	0.46
22 mm	D016222	D015722	3.03	1.17	1.17	0.00	0.49
23 mm	D016223	D015723	3.03	1.25	1.25	0.00	0.52
24 mm	D016224	D015724	3.03	1.25	1.25	0.00	0.54
25 mm	D016225	D015725	3.03	1.33	1.33	0.00	0.56
26 mm	D016226	D015726	3.03	1.33	1.33	0.00	0.64
27 mm	D016227	D015727	3.03	1.41	1.41	0.00	0.65
28 mm	D016228		3.03	1.49	1.49	0.00	0.70
29 mm	D016229		3.03	1.49	1.49	0.00	0.73
30 mm	D016230		3.03	1.57	1.57	0.00	0.78
31 mm	D016231		3.03	1.57	1.57	0.00	0.85
32 mm	D016232		3.03	1.65	1.65	0.00	0.93

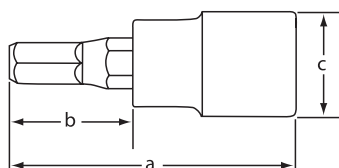
\* Meets A.N.S.I. standards



## Hex Head Sockets SAE-Standard Length

Size	Part No.	Overall Length (a) inches	Bit Length (b) inches	Drive End Width (c) inches	Net Weight (lbs)
1/4"	D013058	2.44	0.94	0.86	0.14
5/16"	D013060	2.44	0.94	0.86	0.15
3/8"	D013062	2.44	0.94	0.86	0.18
7/16"	D013064	2.44	0.94	0.94	0.23
1/2"	D013066	2.44	0.94	0.94	0.33
9/16"	D013068	2.44	0.94	0.94	0.33
5/8"	D013070	2.44	0.94	1.02	0.40
3/4"	D013074	2.44	0.94	1.02	0.52

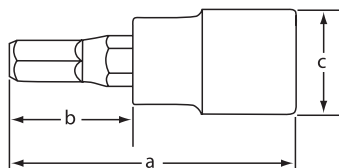
\* Meets A.N.S.I. standards



## Hex Head Sockets SAE-Long

Size	Part No.	Overall Length (a) inches	Bit Length (b) inches	Drive End Width (c) inches	Net Weight (lbs)
1/4"	D013458	3.94	2.44	0.86	0.17
5/16"	D013460	3.94	2.44	0.86	0.19
3/8"	D013462	3.94	2.44	0.86	0.24
7/16"	D013464	3.94	2.44	0.94	0.32
1/2"	D013466	3.94	2.44	0.94	0.43
9/16"	D013468	3.94	2.44	0.94	0.43
5/8"	D013470	3.94	2.44	1.02	0.60
3/4"	D013474	3.94	2.44	1.02	0.73

\* Meets A.N.S.I. standards



## Hex Head Sockets Metric-Standard Length

Size	Part No.	Overall Length (a) inches	Bit Length (b) inches	Drive End Width (c) inches	Net Weight (lbs)
6 mm	D013006	2.44	0.94	0.86	0.14
8 mm	D013008	2.44	0.94	0.86	0.15
10 mm	D013010	2.44	0.94	0.86	0.18
12 mm	D013012	2.44	0.94	0.94	0.23
14 mm	D013014	2.44	0.94	0.94	0.33
17 mm	D013017	2.44	0.94	1.02	0.43
19 mm	D013019	2.44	0.94	1.02	0.52

\* Meets A.N.S.I. standards

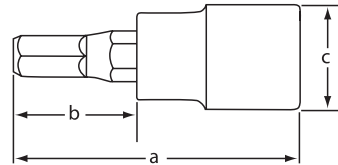




## Hex Head Sockets Metric-Long

Size	Part No.	Overall Length (a) inches	Bit Length (b) inches	Drive End Width (c) inches	Net Weight (lbs)
6 mm	D013406	3.94	2.44	0.86	0.17
8 mm	D013408	3.94	2.44	0.86	0.19
10 mm	D013410	3.94	2.44	0.86	0.24
12 mm	D013412	3.94	2.44	0.94	0.32
14 mm	D013414	3.94	2.44	0.94	0.43
17 mm	D013417	3.94	2.44	1.02	0.60
19 mm	D013419	3.94	2.44	1.02	0.73

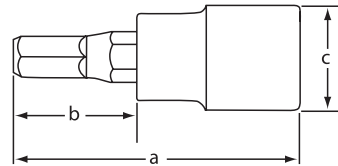
\* Meets A.N.S.I. standards



## Torx® Head Sockets-Standard Length

Size	Part No.	Overall Length (a) inches	Bit Length (b) inches	Drive End Width (c) inches	Net Weight (lbs)
T20	D013320	2.44	0.94	0.86	0.14
T25	D013325	2.44	0.94	0.86	0.14
T27	D013327	2.44	0.94	0.86	0.14
T30	D013330	2.44	0.94	0.86	0.14
T40	D013340	2.44	0.94	0.86	0.14
T45	D013345	2.44	0.94	0.86	0.15
T50	D013350	2.44	0.94	0.86	0.15

\* Meets A.N.S.I. standards



## Torx® Head Sockets-Long

Size	Part No.	Overall Length (a) inches	Bit Length (b) inches	Drive End Width (c) inches	Net Weight (lbs)
T20	D013720	2.44	0.94	0.86	0.16
T25	D013725	2.44	0.94	0.86	0.16
T27	D013727	2.44	0.94	0.86	0.17
T30	D013730	2.44	0.94	0.86	0.17
T40	D013740	2.44	0.94	0.86	0.17
T45	D013745	2.44	0.94	0.86	0.19
T50	D013750	2.44	0.94	0.86	0.19

\* Meets A.N.S.I. standards

## 17 Piece 6 Point Standard Impact SAE Socket Set

Part No. D018020



**Set Content:**

17 Standard SAE Impact Sockets: 3/8", 7/16", 1/2", 9/16", 5/8", 11/16", 3/4", 13/16", 7/8", 15/16", 1", 1-1/16", 1-1/8", 1-3/16", 1-1/4", 1-5/16", 1-3/8"

Includes Rail.

## 13 Piece 6 Point Deep Impact SAE Socket Set

Part No. D018021



**Set Content:**

13 Deep SAE Impact Sockets: 1/2", 9/16", 5/8", 11/16", 3/4", 13/16", 7/8", 15/16", 1", 1-1/16", 1-1/8", 1-3/16", 1-1/4"

Includes Rail.



# Sockets

## 14 Piece 6 Point Standard Impact Metric Socket Set

Part No. D018023



**Set Content:**

**14 Standard Metric Impact Sockets: 10, 11, 12, 13, 14, 15, 16, 17, 18, 19, 20, 21, 22, 23mm**  
**Includes Rail.**

---

## 14 Piece 6 Point Deep Impact Metric Socket Set

Part No. D018022



**Set Content:**

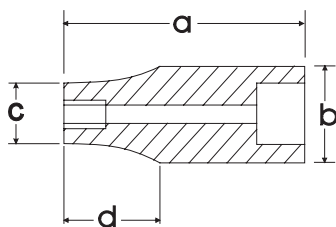
**14 Deep Metric Impact Sockets: 10, 11, 12, 13, 14, 15, 16, 17, 18, 19, 20, 21, 22, 23mm**  
**Includes Rail.**

---

## SAE Standard Impact Sockets

Size	Part No.	Overall Length (a) inches	Drive End Width (b) inches	Hex End Length (c) inches	Taper Length (d) inches	Net Weight (lbs)
3/8"	D014312	1.50	0.86	0.67	0.35	0.15
7/16"	D014314	1.50	0.86	0.71	0.35	0.15
1/2"	D014316	1.50	0.86	0.79	0.35	0.15
9/16"	D014318	1.50	0.94	0.87	0.35	0.18
5/8"	D014320	1.50	0.94	0.94	0.00	0.18
11/16"	D014322	1.50	1.02	1.02	0.00	0.22
3/4"	D014324	1.57	1.09	1.09	0.00	0.23
13/16"	D014326	1.57	1.17	1.17	0.00	0.29
7/8"	D014328	1.65	1.25	1.25	0.00	0.33
15/16"	D014330	1.73	1.33	1.33	0.00	0.40
1"	D014332	1.73	1.41	1.41	0.00	0.44
1-1/16"	D014334	1.81	1.49	1.49	0.00	0.55
1-1/8"	D014336	1.81	1.50	1.57	0.55	0.60
1-3/16"	D014338	1.81	1.50	1.65	0.55	0.66
1-1/4"	D014340	1.81	1.50	1.72	0.55	0.68
1-5/16"	D014342	1.81	1.50	1.76	0.63	0.73
1-3/8"	D014344	1.97	1.50	1.88	0.63	0.82
1-7/16"	D014346	1.97	1.50	1.96	0.63	0.90
1-1/2"	D014348	1.97	1.50	2.04	0.63	0.97

\* Meets A.N.S.I. standards



## SAE Deep Impact Sockets

Size	Part No.	Overall Length (a) inches	Drive End Width (b) inches	Hex End Length (c) inches	Taper Length (d) inches	Net Weight (lbs)
3/8"	D014512	3.07	0.86	0.67	0.63	0.35
7/16"	D014514	3.07	0.86	0.71	0.63	0.35
1/2"	D014516	3.07	0.94	0.79	0.63	0.42
9/16"	D014518	3.07	0.94	0.88	0.63	0.42
5/8"	D014520	3.07	0.94	0.94	0.00	0.42
11/16"	D014522	3.07	1.02	1.02	0.00	0.46
3/4"	D014524	3.07	1.09	1.09	0.00	0.53
13/16"	D014526	3.07	1.17	1.17	0.00	0.57
7/8"	D014528	3.07	1.25	1.25	0.00	0.66
15/16"	D014530	3.07	1.33	1.33	0.00	0.66
1"	D014532	3.07	1.41	1.41	0.00	0.77
1-1/16"	D014534	3.07	1.49	1.49	0.00	0.88
1-1/8"	D014536	3.07	1.50	1.57	0.55	0.88
1-3/16"	D014538	3.07	1.50	1.65	0.55	0.95
1-1/4"	D014540	3.07	1.50	1.72	0.55	0.99
1-5/16"	D014542	3.07	1.50	1.76	0.63	1.21
1-3/8"	D014544	3.07	1.50	1.88	0.63	1.28

\* Meets A.N.S.I. standards

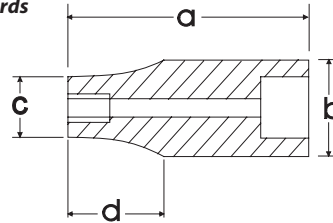


## Metric Standard Impact Sockets



Size	Part No.	Overall Length (a) inches	Drive End Width (b) inches	Hex End Length (c) inches	Taper Length (d) inches	Net Weight (lbs)
8 mm	D014008	1.50	0.86	0.55	0.35	0.15
9 mm	D014009	1.50	0.86	0.59	0.35	0.15
10 mm	D014010	1.50	0.86	0.67	0.35	0.15
11 mm	D014011	1.50	0.86	0.71	0.35	0.15
12 mm	D014012	1.50	0.86	0.75	0.35	0.15
13 mm	D014013	1.50	0.86	0.79	0.35	0.15
14 mm	D014014	1.50	0.94	0.87	0.35	0.18
15 mm	D014015	1.50	0.94	0.94	0.00	0.18
16 mm	D014016	1.50	0.94	0.94	0.00	0.18
17 mm	D014017	1.50	1.02	1.02	0.00	0.22
18 mm	D014018	1.50	1.02	1.02	0.00	0.22
19 mm	D014019	1.57	1.09	1.09	0.00	0.23
20 mm	D014020	1.57	1.17	1.17	0.00	0.29
21 mm	D014021	1.57	1.17	1.17	0.00	0.29
22 mm	D014022	1.65	1.25	1.25	0.00	0.33
23 mm	D014023	1.65	1.25	1.25	0.00	0.40
24 mm	D014024	1.73	1.33	1.33	0.00	0.40
25 mm	D014025	1.73	1.37	1.37	0.00	0.44
26 mm	D014026	1.73	1.41	1.41	0.00	0.44
27 mm	D014027	1.81	1.49	1.49	0.00	0.55
28 mm	D014028	1.81	1.50	1.57	0.55	0.60
29 mm	D014029	1.81	1.50	1.57	0.55	0.60
30 mm	D014030	1.81	1.50	1.65	0.55	0.66
31 mm	D014031	1.81	1.50	1.65	0.55	0.68
32 mm	D014032	1.81	1.50	1.72	0.55	0.68
36 mm	D014036	1.97	1.50	1.96	0.63	0.90

\* Meets A.N.S.I. standards



## Metric Deep Impact Sockets



Size	Part No.	Overall Length (a) inches	Drive End Width (b) inches	Hex End Length (c) inches	Taper Length (d) inches	Net Weight (lbs)
8 mm	D014208	3.07	0.86	0.55	0.63	0.35
9 mm	D014209	3.07	0.86	0.59	0.63	0.35
10 mm	D014210	3.07	0.86	0.67	0.63	0.35
11 mm	D014211	3.07	0.86	0.71	0.63	0.35
12 mm	D014212	3.07	0.86	0.75	0.63	0.35
13 mm	D014213	3.07	0.94	0.79	0.63	0.42
14 mm	D014214	3.07	0.94	0.87	0.63	0.42
15 mm	D014215	3.07	0.94	0.94	0.00	0.42
16 mm	D014216	3.07	0.94	0.94	0.00	0.42
17 mm	D014217	3.07	1.02	1.02	0.00	0.46
18 mm	D014218	3.07	1.02	1.02	0.00	0.53
19 mm	D014219	3.07	1.09	1.09	0.00	0.53
20 mm	D014220	3.07	1.17	1.17	0.00	0.53
21 mm	D014221	3.07	1.17	1.17	0.00	0.57
22 mm	D014222	3.07	1.25	1.25	0.00	0.66
23 mm	D014223	3.07	1.25	1.25	0.00	0.66
24 mm	D014224	3.07	1.33	1.33	0.00	0.66
27 mm	D014227	3.07	1.49	1.49	0.00	0.88
30 mm	D014230	3.07	1.50	1.65	0.55	0.95
36 mm	D014236	3.07	1.50	1.96	0.63	1.28

\* Meets A.N.S.I. standards

## 21 Piece 12 Point Standard SAE Set

Part No. D023000



**Set Content:**

16 Regular SAE Sockets: 7/8", 15/16", 1", 1-1/16", 1-1/8", 1-3/16", 1-1/4", 1-5/16", 1-3/8", 1-7/16", 1-1/2", 1-5/8", 1-3/4", 1-13/16", 1-7/8", 2"  
4" Extension, 8" Extension, 16" Extension, Flex Handle, 24 Tooth Ratchet

Includes Blow Mold Case.

## 20 Piece 12 Point Standard Metric Set

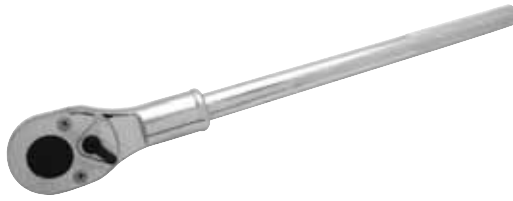
Part No. D023001



**Set Content:**

15 Regular Metric Sockets: 19, 20, 21, 22, 23, 24, 25, 26, 27, 28, 29, 30, 32, 35, 36mm  
4" Extension, 8" Extension, 16" Extension, Flex Handle, 24 Tooth Ratchet

Includes Blow Mold Case.



### Ratchet-Chrome Handle

Part No.	Length (inches)	Weight (lbs)	No. of Teeth
D019301	19.69	4.34	24



### Flex Handle

Part No.	Length (inches)	Weight (lbs)
D019800	18.70	4.08



### Chrome Extension

Part No.	Length (inches)	Weight (lbs)
D019004	4.00	0.92
D019008	8.00	1.63
D019016	16.00	3.06



### Sliding T-Handle

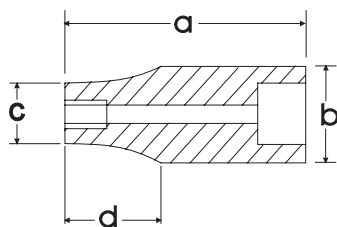
Part No.	Length (inches)	Weight (lbs)
D019501	17.72	3.06



## SAE Standard Chrome Sockets

Size	Part No.	Overall Length (a) inches	Drive End Width (b) inches	Hex End Length (c) inches	Taper Length (d) inches	Net Weight (lbs)
7/8"	D022428	1.97	1.42	1.30	0.79	0.49
15/16"	D022430	1.97	1.42	1.36	0.79	0.49
1"	D022432	1.97	1.42	1.44	0.79	0.49
1-1/16"	D022434	2.05	1.42	1.50	0.83	0.49
1-1/8"	D022436	2.05	1.50	1.57	0.83	0.57
1-3/16"	D022438	2.13	1.50	1.65	0.87	0.60
1-1/4"	D022440	2.20	1.50	1.73	0.87	0.66
1-5/16"	D022442	2.20	1.50	1.81	0.87	0.77
1-3/8"	D022444	2.28	1.65	1.89	0.91	0.82
1-7/16"	D022446	2.28	1.65	1.97	0.91	0.97
1-1/2"	D022448	2.36	1.77	2.05	0.91	1.04
1-9/16"	D022450	2.44	1.77	2.13	0.91	1.10
1-5/8"	D022452	2.52	1.77	2.20	1.02	1.15
1-11/16"	D022454	2.56	1.77	2.28	1.02	1.19
1-3/4"	D022456	2.60	1.89	2.36	1.02	1.32
1-13/16"	D022458	2.68	1.89	2.44	1.02	1.48
1-7/8"	D022460	2.76	1.89	2.52	1.10	1.57
2"	D022464	2.83	1.89	2.68	1.18	1.65

\* Meets A.N.S.I. standards



## Metric Standard Chrome Sockets

Size	Part No.	Overall Length (a) inches	Drive End Width (b) inches	Hex End Length (c) inches	Taper Length (d) inches	Net Weight (lbs)
19 mm	D022119	1.95	1.42	1.14	0.79	0.49
20 mm	D022120	1.95	1.42	1.18	0.79	0.49
21 mm	D022121	1.97	1.42	1.26	0.79	0.49
22 mm	D022122	1.97	1.42	1.30	0.79	0.49
23 mm	D022123	1.97	1.42	1.34	0.79	0.49
24 mm	D022124	1.97	1.42	1.36	0.79	0.49
25 mm	D022125	1.97	1.42	1.44	0.79	0.49
26 mm	D022126	1.97	1.42	1.46	0.79	0.49
27 mm	D022127	2.05	1.42	1.50	0.83	0.49
28 mm	D022128	2.05	1.50	1.54	0.83	0.57
29 mm	D022129	2.05	1.50	1.57	0.83	0.57
30 mm	D022130	2.13	1.50	1.65	0.87	0.60
32 mm	D022132	2.20	1.50	1.73	0.87	0.66
35 mm	D022135	2.28	1.65	1.89	0.87	0.82
36 mm	D022136	2.28	1.65	1.97	0.91	0.97
38 mm	D022138	2.28	1.77	2.05	0.91	1.01
41 mm	D022141	2.52	1.77	2.20	1.02	1.15
46 mm	D022146	2.68	1.89	2.44	1.02	1.48
50 mm	D022150	2.83	1.89	2.68	1.18	1.72

\* Meets A.N.S.I. standards





# Sockets

## 10 Piece 6 Point Standard Impact SAE Set

Part No. D021000



**Set Content:**

**10 Regular SAE Impact Sockets: 15/16", 1", 1-1/16", 1-1/8", 1-1/4", 1-5/16", 1-3/8", 1-7/16", 1-1/2", 1-5/8"**

**Includes Blow Mold Case.**

## 10 Piece 6 Point Deep Impact SAE Set

Part No. D021001



**Set Content:**

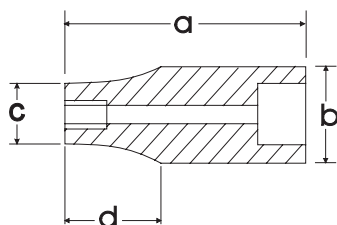
**10 Deep SAE Impact Sockets: 15/16", 1", 1-1/16", 1-1/8", 1-1/4", 1-5/16", 1-3/8", 1-7/16", 1-1/2", 1-5/8"**

**Includes Blow Mold Case.**

## SAE Standard Impact Sockets

Size	Part No.	Overall Length (a) inches	Drive End Width (b) inches	Hex End Length (c) inches	Taper Length (d) inches	Net Weight (lbs)
3/4"	D020324	2.05	1.49	1.19	0.94	0.51
13/16"	D020326	2.05	1.49	1.26	0.94	0.53
7/8"	D020328	2.05	1.49	1.34	0.94	0.55
15/16"	D020330	2.05	1.49	1.42	0.94	0.55
1"	D020332	2.05	1.49	1.49	0.00	0.57
1-1/16"	D020334	2.05	1.57	1.57	0.00	0.62
1-1/8"	D020336	2.05	1.65	1.65	0.00	0.73
1-3/16"	D020338	2.05	1.72	1.72	0.00	0.82
1-1/4"	D020340	2.05	1.73	1.80	0.00	0.82
1-5/16"	D020342	2.20	1.73	1.88	0.00	0.90
1-3/8"	D020344	2.20	1.73	1.96	0.00	0.97
1-7/16"	D020346	2.20	1.73	2.04	0.00	0.99
1-1/2"	D020348	2.20	1.73	2.08	0.00	1.01
1-9/16"	D020350	2.44	1.73	2.20	0.00	1.23
1-5/8"	D020352	2.44	1.73	2.28	0.00	1.30
1-11/16"	D020354	2.44	1.73	2.50	0.00	1.54
1-3/4"	D020356	2.44	1.73	2.55	0.00	1.65
1-13/16"	D020358	2.68	1.73	2.63	0.00	1.70
1-7/8"	D020360	2.68	1.73	2.67	0.00	1.74
1-15/16"	D020362	2.76	1.73	2.75	0.00	1.74
2"	D020364	2.83	2.13	2.79	0.00	1.94
2-1/16"	D020366	2.83	2.13	2.91	0.00	2.03
2-1/8"	D020368	2.83	2.13	3.02	0.00	2.76
2-3/16"	D020370	2.91	2.13	3.02	0.00	2.76
2-1/4"	D020372	2.91	2.13	3.14	0.00	3.20
2-5/16"	D020374	2.95	2.13	3.22	0.00	3.31
2-3/8"	D020376	2.95	2.13	3.30	0.00	3.31

\* Meets A.N.S.I. standards



## SAE Deep Impact Sockets

Size	Part No.	Overall Length (a) inches	Drive End Width (b) inches	Hex End Length (c) inches	Taper Length (d) inches	Net Weight (lbs)
3/4"	D020524	3.54	1.49	1.18	1.97	0.86
13/16"	D020526	3.54	1.49	1.26	1.97	0.88
7/8"	D020528	3.54	1.49	1.34	1.97	0.97
15/16"	D020530	3.54	1.49	1.42	1.97	0.97
1"	D020532	3.54	1.49	1.49	0.00	0.99
1-1/16"	D020534	3.54	1.57	1.57	0.00	1.12
1-1/8"	D020536	3.54	1.65	1.65	0.00	1.26
1-3/16"	D020538	3.54	1.72	1.72	0.00	1.34
1-1/4"	D020540	3.54	1.73	1.80	0.00	1.39
1-5/16"	D020542	3.54	1.73	1.88	0.00	1.46
1-3/8"	D020544	3.54	1.73	1.96	0.00	1.70
1-7/16"	D020546	3.54	1.73	2.04	0.00	1.70
1-1/2"	D020548	3.62	1.73	2.08	0.00	1.83
1-9/16"	D020550	3.62	1.73	2.20	0.00	1.90
1-5/8"	D020552	3.62	1.73	2.28	0.00	1.92

\* Meets A.N.S.I. standards

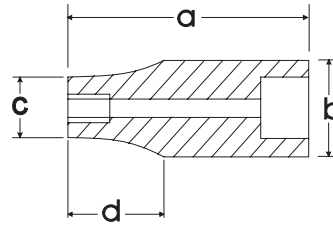


## Metric Impact Sockets



Size	Part No.	Overall Length (a) inches	Drive End Width (b) inches	Hex End Length (c) inches	Taper Length (d) inches	Net Weight (lbs)
24 mm	D020024	2.05	1.49	1.42	0.94	0.55
27 mm	D020027	2.05	1.57	1.57	0.00	0.62
28 mm	D020028	2.05	1.65	1.65	0.00	0.71
30 mm	D020030	2.05	1.72	1.72	0.00	0.82
32 mm	D020032	2.05	1.73	1.73	0.00	0.84
33 mm	D020033	2.20	1.73	1.88	0.00	0.90
34 mm	D020034	2.20	1.73	1.88	0.00	0.90
35 mm	D020035	2.20	1.73	1.96	0.00	1.04
36 mm	D020036	2.20	1.73	2.04	0.00	1.04
38 mm	D020038	2.20	1.73	2.08	0.00	1.04
40 mm	D020040	2.44	1.73	2.20	0.00	1.19
41 mm	D020041	2.44	1.73	2.28	0.00	1.30
42 mm	D020042	2.44	1.73	2.39	0.00	1.46
43 mm	D020043	2.48	1.73	2.47	0.00	1.54
46 mm	D020046	2.48	1.73	2.63	0.00	1.70
50 mm	D020050	2.83	2.13	2.79	0.00	2.14

\* Meets A.N.S.I. standards



## Metric Deep Impact Sockets



Size	Part No.	Overall Length (a) inches	Drive End Width (b) inches	Hex End Length (c) inches	Taper Length (d) inches	Net Weight (lbs)
19 mm	D020219	3.54	1.49	1.18	1.97	0.86
27 mm	D020227	3.54	1.57	1.57	0.00	1.10
30 mm	D020230	3.54	1.72	1.72	0.00	1.37
32 mm	D020232	3.54	1.73	1.80	0.00	1.39
33 mm	D020233	3.54	1.73	1.88	0.00	1.48
35 mm	D020235	3.54	1.73	1.96	0.00	1.70
36 mm	D020236	3.54	1.73	2.04	0.00	1.65
38 mm	D020238	3.62	1.73	2.08	0.00	1.83
41 mm	D020241	3.62	1.73	2.28	0.00	1.94
43 mm	D020243	3.62	1.73	2.47	0.00	2.31

\* Meets A.N.S.I. standards

# Wrenches



## Complete Assortment

Wide selection of combination, ratcheting, adjustable and pipe wrenches.

## Large and Visible Markings

Laser etched markings on combination wrenches improve size identification and provides SAE/metric differentiation.

## User-Friendly Design

Offset box end on most styles provides extra knuckle clearance.

## Professional Grade

All wrenches meet ANSI standards.

# Wrenches

## 12 Piece SAE Combination Wrench Set

Part No. D074202

**Set Content:**  
12 SAE Mirror Chrome Combination Wrenches:  
1/4", 5/16", 3/8", 7/16", 1/2", 9/16", 5/8", 11/16",  
3/4", 13/16", 7/8", 15/16"



Includes Canvas Roll.

## 14 Piece SAE Combination Wrench Set

Part No. D074201

**Set Content:**  
14 SAE Mirror Chrome Combination Wrenches:  
3/8", 7/16", 1/2", 9/16", 5/8", 11/16", 3/4", 13/16",  
7/8", 15/16", 1", 1-1/16", 1-1/8", 1-1/4"  
Includes Canvas Roll.



Includes Canvas Roll.

# Wrenches

## 11 Piece Metric Combination Wrench Set

Part No. D074204

**Set Content:**  
11 Metric Mirror Chrome Combination Wrenches:  
9, 10, 11, 12, 13, 14, 15, 16, 17, 18, 19mm



Includes Canvas Roll.

## 19 Piece Metric Combination Wrench Set

Part No. D074203

**Set Content:**  
19 Metric Mirror Chrome Combination Wrenches:  
6, 7, 8, 9, 10, 11, 12, 13, 14, 15, 16, 17,  
18, 19, 20, 21, 22, 23, 24mm



Includes Canvas Roll.

# Wrenches

## 11 Piece Metric Combination Wrench Set - Contractor Series

Part No. D074224

**Set Content:**  
**11 Metric Combination Wrenches:**  
9, 10, 11, 12, 13, 14, 15, 16, 17, 18, 19mm  
Includes Canvas Roll.

**Contractor Series - A superior alternative to raised panel wrenches.**



Includes Canvas Roll.

## 19 Piece Metric Combination Wrench Set - Contractor Series

Part No. D074223

**Set Content:**  
**19 Metric Combination Wrenches:**  
6, 7, 8, 9, 10, 11, 12, 13, 14, 15, 16, 17,  
18, 19, 20, 21, 22, 23, 24mm  
Includes Canvas Roll.



Includes Canvas Roll.



# Wrenches

## 12 Piece SAE Combination Wrench Set - Contractor Series

Part No. D074222

**Set Content:**

12 SAE Combination Wrenches: 1/4", 5/16", 3/8", 7/16",  
1/2", 9/16", 5/8", 11/16", 3/4", 13/16", 7/8", 15/16"  
Includes Canvas Roll.



Includes Canvas Roll.

## 16 Piece SAE Combination Wrench Set - Contractor Series

Part No. D074221

**Set Content:**

14 SAE Combination Wrenches: 1/4", 5/16", 3/8", 7/16", 1/2", 9/16",  
5/8", 11/16", 3/4", 13/16", 7/8", 15/16", 1", 1-1/16", 1-1/8", 1-1/4"  
Includes Canvas Roll.



Includes Canvas Roll.

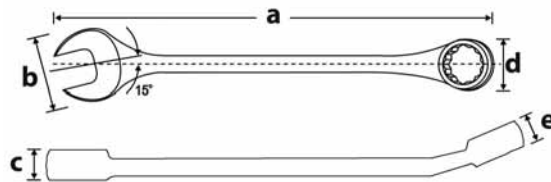
# Wrenches



## SAE Combination Wrenches - Mirror Chrome Finish

Size	Part No.	Overall Length (a) inches	Head Width (b) inches	Head Thickness (c) inches	Box End Width (d) inches	Box End Thickness (e) inches	Net Weight (lbs)
1/4"	D074008	5.04	0.54	0.17	0.41	0.18	0.05
5/16"	D074010	5.83	0.74	0.19	0.50	0.22	0.07
3/8"	D074012	6.06	0.81	0.23	0.61	0.32	0.10
7/16"	D074014	6.57	0.91	0.27	0.70	0.33	0.14
1/2"	D074016	7.01	1.04	0.28	0.80	0.35	0.16
9/16"	D074018	7.48	1.14	0.30	0.87	0.38	0.21
5/8"	D074020	8.07	1.28	0.33	0.96	0.42	0.27
11/16"	D074022	8.86	1.43	0.35	1.05	0.43	0.34
3/4"	D074024	9.76	1.52	0.36	1.11	0.44	0.39
13/16"	D074026	10.63	1.67	0.39	1.20	0.49	0.51
7/8"	D074028	11.50	1.83	0.41	1.31	0.51	0.63
15/16"	D074030	12.36	1.91	0.43	1.39	0.55	0.73
1"	D074032	13.23	1.98	0.45	1.44	0.57	0.93
1 1/16"	D074034	14.13	2.11	0.48	1.51	0.61	1.13
1 1/8"	D074036	15.35	2.25	0.51	1.70	0.62	1.46
1 1/4"	D074040	16.73	2.44	0.51	1.78	0.65	1.87

\* Meets A.N.S.I. standards



## Metric Combination Wrenches - Mirror Chrome Finish

Size	Part No.	Overall Length (a) inches	Head Width (b) inches	Head Thickness (c) inches	Box End Width (d) inches	Box End Thickness (e) inches	Net Weight (lbs)
6 mm	D074106	5.04	0.54	0.17	0.41	0.18	0.05
7 mm	D074107	5.43	0.60	0.18	0.46	0.20	0.06
8 mm	D074108	5.83	0.74	0.19	0.50	0.22	0.07
9 mm	D074109	6.06	0.81	0.23	0.61	0.32	0.10
10 mm	D074110	6.38	0.85	0.24	0.57	0.33	0.11
11 mm	D074111	6.57	0.91	0.27	0.70	0.33	0.14
12 mm	D074112	6.85	1.01	0.27	0.72	0.31	0.15
13 mm	D074113	7.01	1.04	0.28	0.80	0.35	0.16
14 mm	D074114	7.48	1.14	0.30	0.87	0.38	0.21
15 mm	D074115	8.07	1.28	0.33	0.96	0.42	0.27
16 mm	D074116	8.07	1.28	0.33	0.96	0.42	0.27
17 mm	D074117	8.86	1.43	0.35	1.05	0.43	0.34
18 mm	D074118	9.76	1.52	0.36	1.11	0.44	0.39
19 mm	D074119	9.76	1.52	0.36	1.11	0.44	0.39
20 mm	D074120	10.63	1.67	0.39	1.20	0.49	0.51
21 mm	D074121	10.63	1.67	0.39	1.20	0.49	0.51
22 mm	D074122	11.50	1.83	0.41	1.31	0.51	0.63
23 mm	D074123	12.36	1.91	0.43	1.39	0.55	0.73
24 mm	D074124	12.36	1.91	0.43	1.39	0.55	0.73
25 mm	D074125	13.23	1.98	0.45	1.44	0.57	0.93
26 mm	D074126	13.23	1.98	0.45	1.44	0.57	0.93
27 mm	D074127	14.13	2.11	0.48	1.51	0.61	1.13
28 mm	D074128	15.35	2.25	0.51	1.70	0.62	1.46
29 mm	D074129	15.35	2.25	0.51	1.70	0.62	1.46
30 mm	D074130	15.35	2.25	0.51	1.70	0.62	1.46
32 mm	D074132	16.73	2.44	0.51	1.78	0.65	1.87

\* Meets A.N.S.I. standards

# Wrenches

## SAE Contractor Series Combination Wrenches - Satin Finish

Size	Part No.	Overall Length (a) inches	Head Width (b) inches	Head Thickness (c) inches	Box End Width (d) inches	Box End Thickness (e) inches	Net Weight (lbs)
1/4"	D074308	5.08	0.60	0.17	0.42	0.23	0.05
5/16"	D074310	5.59	0.73	0.19	0.51	0.26	0.07
3/8"	D074312	6.34	0.82	0.20	0.61	0.29	0.13
7/16"	D074314	6.61	0.91	0.23	0.68	0.31	0.14
1/2"	D074316	7.09	1.04	0.25	0.76	0.34	0.17
9/16"	D074318	7.60	1.06	0.25	0.79	0.34	0.24
5/8"	D074320	8.15	1.29	0.31	0.91	0.36	0.33
11/16"	D074322	8.94	1.35	0.31	0.96	0.41	0.40
3/4"	D074324	9.84	1.54	0.37	1.09	0.45	0.44
13/16"	D074326	10.67	1.71	0.39	1.21	0.50	0.62
7/8"	D074328	11.61	1.80	0.40	1.29	0.53	0.66
15/16"	D074330	12.48	1.95	0.41	1.36	0.56	0.84
1"	D074332	13.35	2.03	0.45	1.44	0.59	1.06
1 1/16"	D074334	14.25	2.18	0.48	1.52	0.62	1.28
1 1/8"	D074336	15.51	2.30	0.50	1.67	0.65	1.50
1 1/4"	D074340	16.89	2.56	0.53	1.80	0.71	1.94
1 5/16"	D074342	18.54	2.80	0.61	1.95	0.75	2.43
1 3/8"	D074344	18.54	2.80	0.61	1.95	0.75	2.43
1 7/16"	D074346	20.08	2.99	0.65	2.17	0.83	2.87
1 1/2"	D074348	20.08	2.99	0.65	2.17	0.83	2.87
1 5/8"	D074350	21.65	3.27	0.69	2.36	0.75	2.67
1 11/16"	D074352	21.65	3.27	0.69	2.36	0.75	2.67
1 3/4"	D074354	24.13	3.39	0.81	2.40	0.75	4.85
1 13/16"	D074356	24.13	3.39	0.81	2.40	0.75	4.85
1 7/8"	D074358	25.63	3.78	0.94	2.87	0.75	6.39
2"	D074360	25.63	3.78	0.94	2.87	0.75	6.39
2 1/8"	D074362	28.50	4.45	1.22	3.23	0.92	8.60
2 1/4"	D074364	28.50	4.45	1.22	3.23	0.92	8.60
2 3/8"	D074366	29.25	4.69	1.28	3.68	1.00	10.36
2 1/2"	D074368	29.25	4.69	1.28	3.68	1.00	10.36

\* Meets A.N.S.I. standards



Contractor Series - A superior alternative to raised panel wrenches.



## Metric Contractor Series Combination Wrenches -

Size	Part No.	Overall Length (a) inches	Head Width (b) inches	Head Thickness (c) inches	Box End Width (d) inches	Box End Thickness (e) inches	Net Weight (lbs)
6 mm	D074406	5.08	0.60	0.17	0.42	0.23	0.05
7 mm	D074407	5.31	0.64	0.18	0.46	0.24	0.06
8 mm	D074408	5.59	0.73	0.19	0.51	0.26	0.07
9 mm	D074409	6.10	0.76	0.19	0.54	0.26	0.11
10 mm	D074410	6.34	0.82	0.20	0.61	0.29	0.13
11 mm	D074411	6.61	0.91	0.23	0.68	0.31	0.14
12 mm	D074412	6.85	0.94	0.23	0.70	0.32	0.15
13 mm	D074413	7.09	1.04	0.25	0.76	0.34	0.17
14 mm	D074414	7.60	1.06	0.25	0.79	0.34	0.24
15 mm	D074415	7.87	1.21	0.28	0.89	0.35	0.29
16 mm	D074416	8.15	1.29	0.31	0.91	0.36	0.33
17 mm	D074417	8.94	1.35	0.31	0.96	0.41	0.40
18 mm	D074418	9.41	1.48	0.34	1.05	0.44	0.42
19 mm	D074419	9.84	1.54	0.37	1.09	0.45	0.44
20 mm	D074420	10.20	1.60	0.37	1.13	0.47	0.51
21 mm	D074421	10.67	1.71	0.39	1.21	0.50	0.62
22 mm	D074422	11.61	1.80	0.40	1.29	0.53	0.66
23 mm	D074423	12.48	1.95	0.41	1.36	0.56	0.84
24 mm	D074424	12.48	1.95	0.41	1.36	0.56	0.84
25 mm	D074425	13.35	2.03	0.45	1.44	0.59	1.06
26 mm	D074426	13.35	2.03	0.45	1.44	0.59	1.06
27 mm	D074427	14.25	2.18	0.48	1.52	0.62	1.28
28 mm	D074428	15.51	2.30	0.50	1.67	0.65	1.63
29 mm	D074429	15.51	2.30	0.50	1.67	0.65	1.63
30 mm	D074430	15.51	2.30	0.50	1.67	0.65	1.63
32 mm	D074432	16.89	2.56	0.53	1.80	0.71	1.94

\* Meets A.N.S.I. standards



# Wrenches

## 8 Piece SAE Reversible Combination Ratcheting Wrench Set

Part No. D076601

**Set Content:**

8 Ratcheting Wrenches: 5/16", 3/8", 7/16", 1/2", 9/16", 5/8", 11/16", 3/4"



Includes Canvas Roll.

## 12 Piece Metric Reversible Combination Ratcheting Wrench Set

Part No. D076603

**Set Content:**

12 Ratcheting Wrenches: 8, 9, 10, 11, 12, 13, 14, 15, 16, 17, 18, 19mm



Includes Canvas Roll.

# Wrenches

## 8 Piece SAE Stubby Flex Head Combination Ratcheting Wrench Set

Part No. D076607

**Set Content:**

8 Stubby Ratcheting Wrenches: 5/16", 3/8", 7/16", 1/2", 9/16", 5/8", 11/16", 3/4"



Includes Zipper Case.

## 12 Piece Metric Stubby Flex Head Combination Ratcheting Wrench Set

Part No. D076608

**Set Content:**

12 Stubby Ratcheting Wrenches: 8, 9, 10, 11, 12, 13, 14, 15, 16, 17, 18, 19mm



Includes Zipper Case.

# Wrenches



## SAE Reversible Combination Ratcheting Wrenches

Size	Part No.	Overall Length (a) inches	Head Width (b) inches	Head Thickness (c) inches	Box End Width (d) inches	Box End Thickness (e) inches	Net Weight (lbs)
5/16"	D076010	5.31	0.73	0.20	0.70	0.30	0.07
3/8"	D076012	6.22	0.85	0.23	0.83	0.32	0.12
7/16"	D076014	6.57	0.95	0.23	0.89	0.32	0.15
1/2"	D076016	7.05	1.06	0.26	1.02	0.35	0.21
9/16"	D076018	7.44	1.23	0.30	1.09	0.37	0.26
5/8"	D076020	8.46	1.37	0.31	1.26	0.39	0.35
11/16"	D076022	9.13	1.50	0.31	1.34	0.42	0.40
3/4"	D076024	9.72	1.62	0.35	1.38	0.44	0.55

\* Meets A.N.S.I. standards



## Metric Reversible Combination Ratcheting Wrenches

Size	Part No.	Overall Length (a) inches	Head Width (b) inches	Head Thickness (c) inches	Box End Width (d) inches	Box End Thickness (e) inches	Net Weight (lbs)
8 mm	D076108	5.31	0.73	0.20	0.70	0.30	0.07
9 mm	D076109	5.59	0.76	0.21	0.75	0.30	0.09
10 mm	D076110	6.22	0.85	0.23	0.83	0.32	0.12
11 mm	D076111	6.57	0.95	0.23	0.89	0.32	0.15
12 mm	D076112	6.81	1.04	0.24	0.94	0.35	0.17
13 mm	D076113	7.05	1.06	0.26	1.02	0.35	0.21
14 mm	D076114	7.44	1.23	0.30	1.09	0.37	0.26
15 mm	D076115	7.83	1.32	0.31	1.15	0.37	0.30
16 mm	D076116	8.46	1.35	0.31	1.25	0.39	0.35
17 mm	D076117	9.13	1.50	0.31	1.34	0.42	0.40
18 mm	D076118	9.37	1.56	0.33	1.34	0.43	0.44
19 mm	D076119	9.72	1.62	0.35	1.38	0.44	0.55

\* Meets A.N.S.I. standards



## SAE Stubby Flex Head Ratcheting Wrenches

Size	Part No.	Overall Length (a) inches	Head Width (b) inches	Head Thickness (c) inches	Box End Width (d) inches	Box End Thickness (e) inches	Net Weight (lbs)
5/16"	D076210	3.66	0.66	0.19	0.67	0.29	0.05
3/8"	D076212	3.76	0.83	0.22	0.82	0.29	0.08
7/16"	D076214	4.13	0.98	0.24	0.93	0.34	0.12
1/2"	D076216	4.19	1.08	0.24	0.97	0.34	0.13
9/16"	D076218	4.53	1.14	0.28	1.05	0.34	0.16
5/8"	D076220	4.80	1.30	0.30	1.17	0.41	0.21
11/16"	D076222	4.94	1.37	0.32	1.24	0.41	0.25
3/4"	D076224	5.43	1.53	0.35	1.34	0.42	0.33

\* Meets A.N.S.I. standards



## Metric Stubby Flex Head Ratcheting Wrenches

Size	Part No.	Overall Length (a) inches	Head Width (b) inches	Head Thickness (c) inches	Box End Width (d) inches	Box End Thickness (e) inches	Net Weight (lbs)
8 mm	D076308	3.66	0.66	0.19	0.67	0.29	0.05
9 mm	D076309	3.76	0.83	0.22	0.82	0.29	0.08
10 mm	D076310	3.76	0.83	0.22	0.82	0.29	0.08
11 mm	D076311	4.13	0.98	0.24	0.93	0.34	0.12
12 mm	D076312	4.13	0.98	0.24	0.93	0.34	0.12
13 mm	D076313	4.19	1.08	0.24	0.97	0.34	0.13
14 mm	D076314	4.53	1.14	0.28	1.05	0.34	0.16
15 mm	D076315	4.80	1.30	0.30	1.17	0.41	0.22
16 mm	D076316	4.80	1.30	0.30	1.17	0.41	0.22
17 mm	D076317	4.94	1.37	0.32	1.24	0.41	0.25
18 mm	D076318	5.43	1.53	0.35	1.34	0.42	0.33
19 mm	D076319	5.43	1.53	0.35	1.34	0.42	0.35

\* Meets A.N.S.I. standards

# Wrenches

## 5 Piece SAE Double Box End Reversible Ratcheting Wrench Set (Straight)

Part No. D081203

**Set Content:**

5 Ratcheting Wrenches (straight): 1/4" x 5/16",  
3/8" x 7/16", 1/2" x 9/16", 5/8" x 11/16", 3/4" x 7/8"



Includes Canvas Roll.

## 5 Piece SAE Double Box End Reversible Ratcheting Wrench Set (15° Offset)

Part No. D081201

**Set Content:**

5 Ratcheting Wrenches (15° offset): 1/4" x 5/16",  
3/8" x 7/16", 1/2" x 9/16", 5/8" x 11/16", 3/4" x 7/8"



Includes Canvas Roll.

# Wrenches

## 5 Piece Metric Double Box End Reversible Ratcheting Wrench Set (Straight)

Part No. D081204

**Set Content:**  
5 Ratcheting Wrenches: 7mm x 8mm, 9mm x 10mm, 11mm x 12mm,  
13mm x 14mm, 15mm x 17mm



Includes Canvas Roll.

## 5 Piece Metric Double Box End Reversible Ratcheting Wrench Set (15° Offset)

Part No. D081202

**Set Content:**  
5 Ratcheting Wrenches: 7mm x 8mm, 9mm x 10mm,  
11mm x 12mm, 13mm x 14mm, 15mm x 17mm



Includes Canvas Roll.



# Wrenches

## SAE Double Box End Ratcheting Wrenches-Straight

Size	Part No.	Overall Length (inches)	Net Weight (lbs)
1/4" x 5/16"	D081010	4.52	0.14
3/8" x 7/16"	D081011	5.60	0.18
1/2" x 9/16"	D081012	6.86	0.34
5/8" x 11/16"	D081013	8.11	0.54
3/4" x 7/8"	D081014	9.26	0.63



## SAE Double Box End Ratcheting Wrenches-15° Offset

Size	Part No.	Overall Length (inches)	Net Weight (lbs)
1/4" x 5/16"	D081000	4.33	0.14
3/8" x 7/16"	D081001	5.34	0.18
1/2" x 9/16"	D081002	6.71	0.34
5/8" x 11/16"	D081003	7.92	0.54
3/4" x 7/8"	D081004	9.05	0.63



## Metric Double Box End Ratcheting Wrenches-Straight

Size	Part No.	Overall Length (inches)	Net Weight (lbs)
7 x 8	D081110	5.30	0.16
9 x 10	D081111	5.60	0.18
11 x 12	D081112	6.65	0.30
13 x 14	D081113	6.86	0.34
15 x 17	D081114	8.11	0.54



## Metric Double Box End Ratcheting Wrenches-15° Offset

Size	Part No.	Overall Length (inches)	Net Weight (lbs)
7 x 8	D081100	5.03	0.16
9 x 10	D081101	5.34	0.18
11 x 12	D081102	6.36	0.30
13 x 14	D081103	6.71	0.34
15 x 17	D081104	7.92	0.54



# Wrenches

## Adjustable Wrenches

Size	Part No.	Max. Jaw Opening (inches)	Net Weight (lbs)
4"	D072004	0.6"	0.12
6"	D072006	0.8"	0.30
8"	D072008	1.0"	0.52
10"	D072010	1.2"	0.96
12"	D072012	1.4"	1.43
15"	D072015	1.7"	2.80
18"	D072018	2.1"	4.11

\* Meets A.N.S.I. standards



## Aluminum Pipe Wrenches

Size	Part No.	Max. Jaw Opening (inches)	Net Weight (lbs)
14"	D080014	2"	2.02
18"	D080018	2.5"	3.35
24"	D080024	3"	5.42
36"	D080036	5"	10.40
48"	D080048	6"	18.07

\* Meets A.N.S.I. standards



## 13 Piece SAE Ball End Long Hex Key Set

Part No. D043201

**Set Content:**

3/64", 1/16", 5/64", 3/32", 7/64", 1/8", 9/64", 5/32", 3/16",  
7/32", 1/4", 5/16", 3/8"



## 9 Piece Metric Ball End Long Hex Key Set

Part No. D043202

**Set Content:**

1.5, 2, 2.5, 3, 4, 5, 6, 8, 10 mm



## 13 Piece SAE Hex Key Set

Part No. D043203

**Set Content:**

3/64", 1/16", 5/64", 3/32", 7/64", 1/8", 9/64", 5/32", 3/16",  
7/32", 1/4", 5/16", 3/8"



## 9 Piece Metric Hex Key Set

Part No. D043204

**Set Content:**

1.5, 2, 2.5, 3, 4, 5, 6, 8, 10 mm



## 9 Piece Torx Hex Key Set

Part No. D043205

**Set Content:**

T10, T15, T20, T25, T27, T30, T40, T45, T50



# Hex Keys



## 30 Piece SAE & Metric Hex Key Set

Part No. D043206

**Set Content:**

Regular Metric: 0.7, 0.9, 1.3, 1.5, 2, 2.5, 3, 4, 4.5, 5, 5.5, 6, 7, 8, 10mm

Long SAE: 0.028", 0.035", 0.05", 1/16", 5/64", 3/32", 7/64", 1/8", 9/64", 5/32", 3/16", 7/32", 1/4", 5/16", 3/8"



## 9 Piece SAE Folding Hex Key Set

Part No. D043207

**Set Content:**

5/64", 3/32", 7/64", 1/8", 9/64", 5/32", 3/16", 7/32", 1/4"



## 7 Piece Metric Folding Hex Key Set

Part No. D043208

**Set Content:**

1.5, 2, 2.5, 3, 4, 5, 6 mm



## 8 Piece Torx Folding Hex Key Set

Part No. D043209

**Set Content:**

T8, T10, T15, T20, T25, T27, T30, T40

# Screwdrivers



## **User-Friendly Design**

Screwdrivers are offered in a choice of acetate and comfort grip handles.

## **Improved Visibility**

Bright orange handle colour allows for easy tool retrieval.

## **Professional Grade**

All screwdrivers meet ANSI standards.

# Screwdrivers

## 36 Piece Screwdriver & Bit Set

Part No. D062505



### Set Content:

4 Phillips®: #0, #1, #2, #3

1 Phillips® Stubby: #2

5 Slotted: 5/32", 3/16", 1/4", 5/16", 3/8"

1 Slotted Stubby: 1/4"

4 Square Recess: #0, #1, #2, #3

2 Square Recess Stubby: #1, #2

1 Offset Phillips®: #1, #2

1 Offset Slotted: 3/16", 1/4"

1 Offset Square Recess: #1, #2

Circuit Tester (110V only)

Magnetic Bit Holder

Torx® Bits: T10, T15, T20, T25, T27, T30, T40

Hex Bits: 2, 2.5, 3, 4, 5, 6, 8 mm



Includes Blow Mold Case.

## 9 Piece Screwdriver Set-Comfort Handle

Part No. D062500



### Set Content:

5 Slotted: 1/8", 5/32", 1/4", 5/16", 3/8"

2 Phillips®: #1, #2

2 Square Recess: #1, #2

Includes Plastic Tray.

## 9 Piece Screwdriver Set Acetate Handle

Part No. D062507



**Set Content:**

2 Phillips®: #1, #2  
5 Slot: 1/8", 5/32", 1/4", 5/16", 3/8"  
2 Square Recess: #1, #2  
Includes Plastic Tray.

## 7 Piece Torx® Screwdriver Set Acetate Handle

Part No. D062501



**Set Content:**

7 Torx®: T8, T10, T15, T20, T25, T27, T30  
Includes Plastic Tray.

## 20 Piece Screwdriver Set-Acetate Handle

Part No. D062502



**Set Content:**

5 Slotted: 1/8", 3/16", 1/4", 5/16", 3/8"  
1 Slotted Stubby: 1/4"  
3 Phillips®: #1, #2, #3  
1 Phillips® Stubby: #2  
3 Square Recess: #1, #2, #3  
1 Square Recess Stubby: #2  
6 Torx®: T10, T15, T20, T25, T27, T30  
Includes Plastic Tray.

# Screwdrivers

## 13 Piece Ratcheting Screwdriver Set

Part No. D062508



**Set Content:**  
Ratcheting screwdriver handle  
Phillips® bits: 0, 1, 2, 3  
Square bits: 0, 1, 2, 3  
Slotted bits: 3.5, 4.5, 5.5, 6.5



Bit compartment.

## 21 Piece Screwdriver Set - with Removable Bits

Part No. D062506



**Set Content:**  
Comfort Grip Handle (1/4" Hex)

**Screwdriver Bits (3" Length):**  
Torx®: T10, T15, T20, T25, T30  
Square Recess: #0, #1, #2, #3  
Slotted: 1/8", 5/32", 3/16"  
Phillips®: #0, #1, #2, #3

**Screwdriver Bits (2" Length):**  
Phillips® (2" length): #1, #2 (2), #3



Includes Canvas Pouch.



# Screwdrivers

## Phillips® Screwdrivers Comfort Handle

Part No.	Tip Size	Blade Length (inches)	Overall Length (inches)	Shank Size (inches)	Weight (lbs)
D062101	#1	2.95	6.89	0.20	0.13
D062102	#2	3.94	8.39	0.24	0.21
D062103	#3	5.91	10.67	0.31	0.35

\* Meets A.N.S.I. standards



## Phillips® Stubby Screwdrivers Comfort Handle

Part No.	Tip Size	Blade Length (inches)	Overall Length (inches)	Shank Size (inches)	Weight (lbs)
D062104	#1	1.50	3.80	0.20	0.09
D062105	#2	1.50	3.80	0.24	0.10

\* Meets A.N.S.I. standards



## Phillips® Screwdrivers Acetate Handle

Part No.	Tip Size	Blade Length (inches)	Overall Length (inches)	Shank Size (inches)	Weight (lbs)
D062106	#1	3.00	6.50	0.20	0.12
D062107	#2	4.00	7.75	0.24	0.17
D062108	#3	6.00	10.00	0.31	0.33

\* Meets A.N.S.I. standards



## Phillips® Stubby Screwdrivers Acetate Handle

Part No.	Tip Size	Blade Length (inches)	Overall Length (inches)	Shank Size (inches)	Weight (lbs)
D062109	#1	1.50	3.50	0.24	0.10
D062110	#2	1.50	3.50	0.24	0.11

\* Meets A.N.S.I. standards



# Screwdrivers



## Square Recess Screwdrivers Comfort Handle

Part No.	Tip Size	Blade Length (inches)	Overall Length (inches)	Shank Size (inches)	Weight (lbs)
D062201	#0	2.95	7.40	0.24	0.15
D062202	#1	3.94	8.39	0.24	0.21
D062203	#2	3.94	8.39	0.24	0.21
D062204	#3	4.92	9.37	0.24	0.23

\* Meets A.N.S.I. standards



## Square Recess Stubby Screwdrivers Comfort Handle

Part No.	Tip Size	Blade Length (inches)	Overall Length (inches)	Shank Size (inches)	Weight (lbs)
D062205	#1	1.50	3.80	0.24	0.09
D062206	#2	1.50	3.80	0.24	0.10

\* Meets A.N.S.I. standards



## Square Recess Screwdrivers Acetate Handle

Part No.	Tip Size	Blade Length (inches)	Overall Length (inches)	Shank Size (inches)	Weight (lbs)
D062207	#1	3.00	6.75	0.24	0.17
D062208	#2	4.00	7.75	0.24	0.17
D062209	#3	6.00	9.75	0.24	0.17

\* Meets A.N.S.I. standards



## Square Recess Stubby Screwdrivers Acetate Handle

Part No.	Tip Size	Blade Length (inches)	Overall Length (inches)	Shank Size (inches)	Weight (lbs)
D062210	#1	1.50	3.50	0.24	0.11
D062211	#2	1.50	3.50	0.24	0.11

\* Meets A.N.S.I. standards

## Slotted Screwdrivers Comfort Handle

Part No.	Tip Size	Blade Length (inches)	Overall Length (inches)	Shank Size (inches)	Weight (lbs)
D062001	1/8"	2.95	6.02	0.12	0.07
D062002	5/32"	2.95	6.02	0.12	0.07
D062003	3/16"	3.94	7.87	0.16	0.12
D062004	1/4"	4.92	9.37	0.24	0.23
D062005	5/16"	5.91	10.67	0.31	0.34
D062006	3/8"	7.87	12.64	0.39	0.50

\* Meets A.N.S.I. standards



## Slotted Stubby Screwdrivers Comfort Handle

Part No.	Tip Size	Blade Length (inches)	Overall Length (inches)	Shank Size (inches)	Weight (lbs)
D062007	1/4"	1.50	3.80	0.24	0.10

\* Meets A.N.S.I. standards



## Slotted Screwdrivers Acetate Handle

Part No.	Tip Size	Blade Length (inches)	Overall Length (inches)	Shank Size (inches)	Weight (lbs)
D062008	1/8"	3.00	6.50	0.20	0.14
D062009	3/16"	6.00	9.75	0.20	0.21
D062010	1/4"	4.00	7.75	0.24	0.23
D062011	5/16"	6.00	10.00	0.31	0.36
D062012	3/8"	8.00	12.00	0.31	0.45
D062013	3/8"	10.00	13.75	0.37	0.63
D062014	3/8"	12.00	16.00	0.37	0.73

\* Meets A.N.S.I. standards



## Slotted Stubby Screwdrivers Acetate Handle

Part No.	Tip Size	Blade Length (inches)	Overall Length (inches)	Shank Size (inches)	Weight (lbs)
D062015	1/4"	1.50	3.50	0.24	0.10

\* Meets A.N.S.I. standards



# Screwdrivers



## Torx® Screwdrivers Acetate Handle

Part No.	Tip Size	Blade Length (inches)	Overall Length (inches)	Shank Size (inches)	Weight (lbs)
D062300	T8	3.94	7.87	0.20	0.14
D062301	T10	3.94	7.87	0.20	0.14
D062302	T15	3.94	7.87	0.20	0.14
D062303	T20	3.94	7.87	0.20	0.14
D062304	T25	3.94	7.87	0.20	0.14
D062305	T27	3.94	7.87	0.24	0.21
D062306	T30	3.94	7.87	0.24	0.21

\* Meets A.N.S.I. standards

## 7 Piece SAE Nut Driver Set Acetate Handle

Part No. D062503



Set Content:

7 SAE Nut Drivers: 3/16", 1/4", 5/16", 11/32", 3/8", 7/16", 1/2"  
Includes Plastic Tray.

## 7 Piece Metric Nut Driver Set Acetate Handle

Part No. D062504

Set Content:

7 Metric Nut Drivers: 5, 6, 7, 8, 9, 10, 11mm  
Includes Plastic Tray.



## SAE Nut Drivers-Acetate Handle

Part No.	Tip Size	Blade Length (inches)	Overall Length (inches)	Shank Size (inches)	Weight (lbs)
D062401	3/16"	3	6.75	0.24	0.16
D062402	1/4"	3	6.75	0.24	0.16
D062403	5/16"	3	6.75	0.31	0.19
D062404	11/32"	3	6.75	0.31	0.19
D062405	3/8"	3	6.75	0.31	0.20
D062406	7/16"	3	6.75	0.43	0.26
D062407	1/2"	3	6.75	0.43	0.27

\* Meets A.N.S.I. standards



## Metric Nut Drivers-Acetate Handle

Part No.	Tip Size	Blade Length (inches)	Overall Length (inches)	Shank Size (inches)	Weight (lbs)
D062408	5 mm	3	6.75	0.24	0.16
D062409	6 mm	3	6.75	0.24	0.16
D062410	7 mm	3	6.75	0.31	0.19
D062411	8 mm	3	6.75	0.31	0.19
D062412	9 mm	3	6.75	0.31	0.20
D062413	10 mm	3	6.75	0.43	0.26
D062414	11 mm	3	6.75	0.43	0.26

\* Meets A.N.S.I. standards

# Insulated



## **Guaranteed Protection**

All insulated tools are 1000 V certified to IEC 60900:2004.

## **User-Friendly Design**

Comfort grip handles for easy operation and secure non-slip grip.

## **Peace of Mind**

All insulated tools are backed by a lifetime warranty.

# Insulated Screwdrivers

## 6 Piece Screwdriver Set-Insulated Handles

Part No. D062720



**Set Content:**  
 2 Phillips®: #1, #2  
 4 Slotted: 1/8", 5/32", 7/32", 1/4"  
 Includes Plastic Tray.

## Slotted Insulated Screwdriver



Part No.	Tip Size	Blade Length (inches)	Overall Length (inches)	Shank Size (inches)	Weight (lbs)
D062701	1/8"	3.93	7.50	1.00	0.08
D062702	5/32"	3.93	8.00	1.18	0.12
D062703	7/32"	4.98	9.00	1.18	0.16
D062704	1/4"	5.93	10.50	1.37	0.25

\* Meets A.N.S.I. standards

## Phillips® Insulated Screwdrivers



Part No.	Tip Size	Blade Length (inches)	Overall Length (inches)	Shank Size (inches)	Weight (lbs)
D062705	No 1	3.20	7.25	1.17	0.13
D062706	No 2	4.00	8.50	1.39	0.21

\* Meets A.N.S.I. standards

# Pliers Insulated Pliers

## 4 Piece Plier Set-Insulated Handles

Part No. D055210



Set Content:

8" Linesman Pliers, 8" Diagonal Cutting Pliers, 8" Long Nose Pliers, 10" Box Joint Water Pump Pliers  
Includes Plastic Tray.

## Linesman Pliers-Insulated Handles

Part No.	Overall Length	Jaw Length (inches)	Jaw Thickness (inches)	Weight (lbs)
D055100	7"	1.42	0.24	0.64
D055101	8"	1.65	0.30	0.90

\* Meets A.N.S.I. standards



## Diagonal Cutting Pliers-Insulated Handles

Part No.	Overall Length	Jaw Length (inches)	Jaw Thickness (inches)	Weight (lbs)
D055102	6"	0.79	0.43	0.45
D055103	8"	0.87	0.43	0.64

\* Meets A.N.S.I. standards



# Insulated Pliers



## Long Nose Pliers-Insulated Handles

Part No.	Overall Length	Jaw Length (inches)	Jaw Thickness (inches)	Weight (lbs)
D055104	6"	2.09	0.12	0.37
D055105	8"	2.87	0.17	0.55

\* Meets A.N.S.I. standards



## Bent Nose Pliers-Insulated Handles

Part No.	Overall Length	Jaw Length (inches)	Jaw Thickness (inches)	Weight (lbs)
D055106	6"	1.69	0.12	0.37
D055107	8"	2.72	0.17	0.55

\* Meets A.N.S.I. standards



## Wire Stripping Pliers-Insulated Handles

Part No.	Overall Length	Jaw Length (inches)	Jaw Thickness (inches)	Weight (lbs)
D055108	6"	1.44	0.37	0.45

\* Meets A.N.S.I. standards



## Box Joint Water Pump Pliers-Insulated Handles

Part No.	Overall Length	Jaw Length (inches)	Jaw Thickness (inches)	Weight (lbs)
D055109	10"	1.44	0.39	0.93

\* Meets A.N.S.I. standards



# Pliers Pliers



## **User-Friendly Design**

Comfort grip handles for easy operation and secure non-slip grip.

## **Improved Visibility**

Bright orange handle colour allows for easy tool retrieval.

## **Professional Grade**

All pliers meet ANSI standards.

# Pliers Pliers

## **4 Piece Plier Set-Comfort Handles**

**Part No. D055200**



**Set Content:**

**7" Linesman Pliers, 6" Diagonal Cutting Pliers, 6" Long Nose Pliers, 10" Groove Joint Pliers  
Includes Plastic Tray.**

---

## **5 Piece Plier Set-Comfort Handles**

**Part No. D055201**



**Set Content:**

**8" Linesman Pliers, 7" Diagonal Cutting Pliers, 8" Long Nose Pliers, 8" Bent Nose Pliers, 8" Slip Joint Pliers  
Includes Plastic Tray.**

---

## 3 Piece High Leverage Pliers Set

Part No. D055530



### Set Content:

8" Linesman Pliers, 7" Diagonal Cutting Pliers, 8" Long Nose Pliers  
Includes Plastic Tray.

## Diagonal Cutting Pliers-Comfort Handles

Part No.	Overall Length	Jaw Length (inches)	Jaw Thickness (inches)	Weight (lbs)
D055038	6"	1.00	0.43	0.55
D055000	7"	1.00	0.43	0.60
D055500**	7"	1.00	0.43	0.75

\* Meets A.N.S.I. standards

\*\* High leverage design



## Long Nose Pliers- Comfort Handles

Part No.	Overall Length	Jaw Length (inches)	Jaw Thickness (inches)	Weight (lbs)
D055001	6"	1.93	0.35	0.35
D055002	8"	2.99	0.37	0.50
D055502**	8"	2.60	0.37	0.60
D055003	11"	3.23	0.39	0.65

\* Meets A.N.S.I. standards

\*\* High leverage design



## Bent Nose Pliers-Comfort Handles

Part No.	Overall Length	Jaw Length (inches)	Jaw Thickness (inches)	Weight (lbs)
D055004	6"	1.73	0.35	0.35
D055005	8"	2.85	0.37	0.50
D055006	11"	2.80	0.39	0.65

\* Meets A.N.S.I. standards



# Pliers



## Linesman Pliers-Comfort Handles

Part No.	Overall Length	Jaw Length	Jaw Thickness (inches)	Weight (lbs)
D055013	7"	1.50	0.39	0.60
D055014	8"	1.61	0.43	0.75
D05514**	8"	1.61	0.43	0.80

\* Meets A.N.S.I. standards

\*\* High leverage design



## Slip Joint Pliers-Comfort Handles

Part No.	Overall Length	Jaw Length	Jaw Thickness (inches)	Weight (lbs)
D055007	6"	1.59	0.39	0.45
D055008	8"	2.05	0.41	0.60
D055009	10"	2.24	0.46	0.80

\* Meets A.N.S.I. standards



## Groove Joint Pliers-Comfort Handles

Part No.	Overall Length	Jaw Length	Jaw Thickness (inches)	Weight (lbs)
D055010	7 1/2"	1.69	0.39	0.60
D055011	9 1/2"	2.03	0.44	0.80
D055012	12"	2.50	0.47	1.00

\* Meets A.N.S.I. standards

## Cable Cutter

Part No.	Overall Length	Weight (lbs)
<b>D055036</b>	<b>10"</b>	<b>1.0</b>

\* Meets A.N.S.I. standards



## End Cutter

Part No.	Overall Length	Weight (lbs)
<b>D055037</b>	<b>8"</b>	<b>0.75</b>

\* Meets A.N.S.I. standards



## Tin Snips

Part No.	Overall Length	Jaw Length (inches)	Weight (lbs)
<b>D055031</b>	<b>7"</b>	<b>1.77</b>	<b>0.60</b>
<b>D055032</b>	<b>10"</b>	<b>1.77</b>	<b>0.80</b>
<b>D055033</b>	<b>12"</b>	<b>1.77</b>	<b>1.00</b>



## Compound Tin Snips-Straight

Part No.	Overall Length	Weight (lbs)
<b>D055034</b>	<b>8"</b>	<b>1.00</b>
<b>D055035</b>	<b>11"</b>	<b>1.15</b>



# Pliers

## 3 Piece Aviation Snips Set

Part No. D055205



**Set Content:**

Aviation Snip-Right Hand, Aviation Snip-Straight, Aviation Snip-Left Hand



### Aviation Snips-Right Hand

Part No.	Overall Length	Cut (inches)	Cuts	Grip Colour	Weight (lbs)
D055028	10"	1.70	Right	Green	0.84

\* Meets A.N.S.I. standards

### Aviation Snips-Straight

Part No.	Overall Length	Cut (inches)	Cuts	Grip Colour	Weight (lbs)
D055029	10"	1.70	Straight	Yellow	0.84

\* Meets A.N.S.I. standards

### Aviation Snips-Left Hand

Part No.	Overall Length	Cut (inches)	Cuts	Grip Colour	Weight (lbs)
D055030	10"	1.70	Left	Red	0.84

\* Meets A.N.S.I. standards

## 5 piece Locking Plier Set

Part No. D055316



**Set Content:**

- 10" locking plier - straight jaws
- 10" locking plier - curved jaws
- 7" locking plier - curved jaws with wire cutter
- 6" locking plier - long nose
- 5" locking plier - curved jaws with wire cutter



Includes Canvas Roll.

## Locking Pliers - Curved Jaws

- The narrow, large opening curved jaws provide firm grip on all round shapes

Part No.	Overall Length	Jaw Opening (inches)	Weight (lbs)
D055304	7"	1.50	0.75
D055305	10"	1.88	1.17



## Locking Pliers - Curved Jaws with Wire Cutter

- The functionality of regular curved jaws with added convenience of a wire cutter

Part No.	Overall Length	Jaw Opening (inches)	Weight (lbs)
D055301	5"	1.13	0.40
D055302	7"	1.50	0.75
D055303	10"	1.88	1.17



## Locking Pliers - Straight Jaws

- Straight jaws provide firm grip on all flat shapes

Part No.	Overall Length	Jaw Opening (inches)	Weight (lbs)
D055306	7"	1.18	0.79
D055307	10"	1.88	1.21



## Locking Pliers - Long Nose

- Long slim jaw design is helpful when holding, placing or extracting pieces in recessed spaces

Part No.	Overall Length	Jaw Opening (inches)	Weight (lbs)
D055312	6"	1.13	0.42
D055313	9"	2.25	0.82





## Locking Clamp - Swivel Pads

- Two knurled swivel pads allow a non-slip parallel clamping on tapered surfaces without any damage to the piece

Part No.	Overall Length	Jaw Opening (inches)	Weight (lbs)
D055308	6"	2.00	0.57
D055309	11"	3.37	1.70



## Locking Clamp

- Wide jaw profile provides great versatility in clamping large objects

Part No.	Overall Length	Jaw Opening (inches)	Weight (lbs)
D055310	11"	3.37	1.59



## Locking Chain Clamp

- Flexible heavy duty chain adjusts quickly around any shape providing a secure hold even in hard to reach areas

Part No.	Overall Length	Jaw Opening (inches)	Weight (lbs)
D055311	9"	-	1.57
D055401	Replacement chain for D055311		



## Locking Welding Clamp

- Holds two sections together with a firm grip

Part No.	Overall Length	Jaw Opening (inches)	Weight (lbs)
D055314	9"	2.00	1.48



## Locking Wrench Tool

- Jaw design ensure secure grip onto three sides of the fastener

Part No.	Overall Length	Jaw Opening (inches)	Weight (lbs)
D055315	7"	-	1.28



# Punches & Chisels



## **Complete Assortment**

A variety of punches and chisels to meet any job requirements.

## **Durable Construction**

Special heat treatment ensures improved durability.

## **Professional Grade**

All punches and chisels meet ANSI standards.

# Punches & Chisels

## 8 Piece Chisel Set

Part No. D058201



**Set Content:**

8 Cold Chisels: 1/4", 5/16", 3/8", 1/2", 5/8", 3/4", 7/8", 1"  
Includes Canvas Roll.

---

## 7 Piece Pin Punch Set

Part No. D058200



**Set Content:**

7 Pin Punches: 1/16", 3/32", 1/8", 5/32", 3/16", 1/4", 5/16"  
Includes Canvas Roll.

---

### 8 Piece Punch And Chisel Set

Part No. D058202



**Set Content:**

3 Cold Chisels: 1/2", 5/8", 3/4"

Centre Punch: 5/32"

Solid Punch: 3/16"

3 Pin Punches: 1/8", 3/16", 1/4"

Includes Canvas Roll.

### 16 Piece Punch And Chisel Set

Part No. D058203



**Set Content:**

5 Cold Chisels: 5/16", 1/2", 5/8", 3/4", 7/8"

3 Centre Punches: 1/8", 5/32", 1/4"

3 Solid Punches: 1/8", 3/16", 1/4"

2 Drift Punches: 3/16", 1/4"

3 Pin Punches: 1/8", 3/16", 1/4"

Includes Canvas Roll.

# Punches & Chisels



## Automatic Centre Punch

Part No.	Overall Length (inches)	Weight (lbs)
D058030	4.90	0.12

\* Meets A.N.S.I. standards

## Pin Punch

Part No.	Pin Diameter (inches)	Body (inches)	Length (inches)	Weight (lbs)
D058001	1/16	1/4	4	0.05
D058002	3/32	1/4	4-1/4	0.05
D058003	1/8	5/16	4-3/4	0.05
D058004	5/32	5/16	5	0.10
D058005	3/16	5/16	5-1/4	0.10
D058006	1/4	3/8	5-3/4	0.15
D058007	5/16	7/16	6	0.20

\* Meets A.N.S.I. standards

## Drift Punch

Part No.	Pin Diameter (inches)	Body (inches)	Length (inches)	Weight (lbs)
D058008	1/8	5/16	8	0.15
D058009	5/32	3/8	9	0.20
D058010	3/16	5/16	10	0.20
D058011	1/4	3/8	10	0.25

\* Meets A.N.S.I. standards

## Solid Punch

Part No.	Pin Diameter (inches)	Body (inches)	Length (inches)	Weight (lbs)
D058012	1/16	3/8	5	0.10
D058013	1/8	5/16	5	0.10
D058014	5/32	3/8	5	0.15
D058015	3/16	3/8	5	0.15
D058016	1/4	1/2	5	0.25
D058017	5/16	1/2	6	0.30

\* Meets A.N.S.I. standards

## Centre Punch

Part No.	Pin Diameter (inches)	Body (inches)	Length (inches)	Weight (lbs)
D058018	5/64	1/4	3-1/2	0.05
D058019	1/8	5/16	4-1/2	0.10
D058020	5/32	5/16	5-1/2	0.10
D058021	1/4	3/8	6	0.20

\* Meets A.N.S.I. standards

## Cold Chisel

Part No.	Width of Cut (inches)	Body (inches)	Length (inches)	Weight (lbs)
D058101	1/4	1/4	5	0.05
D058102	5/16	1/4	5	0.05
D058103	3/8	5/16	5-1/2	0.10
D058104	1/2	7/16	6	0.25
D058105	5/8	1/2	6-1/2	0.35
D058106	3/4	5/8	7	0.60
D058107	7/8	5/8	8	0.70
D058108	1	3/4	8-1/2	1.05
D058109	1	3/4	10	1.25
D058110	1	3/4	12	1.50

\* Meets A.N.S.I. standards

# Clamping & Extracting



## **Complete Assortment**

A variety of clamping and pulling tools to meet any job requirements.

## **Durable Construction**

Special heat treatment process ensures years of continuous service.

# Clamping



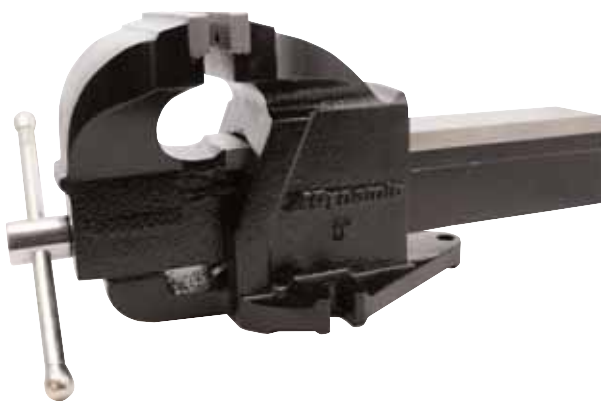
## C-Clamps

- Drop forged steel construction for maximum clamping power
- High strength ACME screw with black oxide plating for corrosion resistance

Part No.	Opening Capacity	Throat Depth	Spindle Diameter	Max. Clamping Power (lbs)	Weight (lbs)
D090001	0-2"	2 1/4"	15/32"	2700	1.4
D090002	0-3"	2 1/2"	45/64"	3000	2.5
D090003	0-4"	3 1/4"	45/64"	3700	3.6
D090004	0-6"	4 1/8"	45/64"	4500	4.6
D090005	0-8"	5"	45/64"	5200	7.9
D090006	0-10"	6"	15/16"	6000	11.8
D090007	0-12"	6 5/16"	15/16"	8000	14.5

## Vises

- Heavy-duty castings provide superior reliability and durability
- Replaceable serrated jaws made of hardened steel provide a secure hold
- Optimum materials and precision placement of nut and screw provide maximum clamping strength and tool reliability



	D092001	D092002	D092003
Jaw Width	4"	6"	8"
Jaw Opening	5.5"	7.5"	8.9"
Jaw Depth	2"	3.5"	4"
Handle Diameter	0.5"	0.5"	0.5"
Base Diameter	6"	6.75"	7.75"
Overall Length	13.5"	19"	20"
Height	6.5"	8.5"	9"
Weight (lbs)	22.04	44.09	61.73

	D092103	D092104	D092105
Swivel Base Diameter	6.5"	7.25"	8.75"
Mounting Hole Diameter	0.433"	0.531"	0.531"
Weight (lbs)	3.30	4.190	5.840

Optional swivel base available.

## Self-Adjusting Pullers

- Spring-loaded jaws for quick and easy set-up for different applications
- Two or three jaw design for added flexibility
- Solid Chrome-Vanadium forged construction for increased durability
- Heavy duty forcing screw with live center for strong even pulls



Part No.	Pulling Capacity	Maximum Reach	Maximum Spread	Weight (lbs)
D093001	2 tons	3 1/2"	4"	2.96
D093002	5 tons	5 1/4"	7"	6.25

# Striking Tools



## **Complete Assortment**

A variety of hammers and pry bars to meet any job requirements.

## **User-Friendly Design**

Hammers are offered in a choice of fiberglass and Hickory handles.

# Hammers



## Claw Hammer-Hickory Handle

Part No.	Head Weight	Head Diameter (inches)	Head Length (inches)	Overall Length (inches)
D041010	16 oz.	1.09	5.07	12.83

\* Meets A.N.S.I. standards



## Claw Hammer-Fiberglass Handle

Part No.	Head Weight	Head Diameter (inches)	Head Length (inches)	Overall Length (inches)
D041011	16 oz.	1.09	5.07	12.95

\* Meets A.N.S.I. standards



## Ball Pein Hammers-Hickory Handle

Part No.	Head Weight	Head Diameter (inches)	Head Length (inches)	Overall Length (inches)
D041025	8 oz.	0.92	3.22	11.70
D041027	16 oz.	1.19	3.94	13.65
D041028	24 oz.	1.38	4.64	15.44
D041029	32 oz.	1.50	4.91	15.60

\* Meets A.N.S.I. standards



## Ball Pein Hammers-Fiberglass Handle

Part No.	Head Weight	Head Diameter (inches)	Head Length (inches)	Overall Length (inches)
D041020	8 oz.	0.90	3.24	10.82
D041022	16 oz.	1.17	3.90	12.73
D041023	24 oz.	1.37	4.60	15.02
D041024	32 oz.	1.52	4.88	15.07

\* Meets A.N.S.I. standards



# Hammers

## Sledge Hammers-Fiberglass Handle

Part No.	Head Weight	Head Diameter (inches)	Head Length (inches)	Overall Length (inches)
D041040	4 lbs.	1.83	5.46	16.19
D041041	6 lbs.	2.11	6.28	35.63
D041042	8 lbs.	2.30	6.86	35.49
D041043	10 lbs.	2.50	7.33	36.02
D041044	12 lbs.	2.61	7.84	36.13
D041045	16 lbs.	2.85	8.74	36.37



## Club Hammers- Fiberglass Handle

Part No.	Head Weight	Head Diameter (inches)	Head Length (inches)	Overall Length (inches)
D041060	2 1/2 lbs.	1.79	3.74	10.49
D041061	4 lbs.	1.99	4.52	10.76

\* Meets A.N.S.I. standards



## Dead Blow Hammers-Fiberglass Handle

Part No.	Head Weight	Head Diameter (inches)	Head Length (inches)	Overall Length (inches)
D041065	1lb.	1.50	3.95	11.40
D041067	2 lbs.	2.00	4.33	13.40
D041069	3 lbs.	2.36	5.11	14.56



# Hammers



## Rubber Mallet-Hickory Handle

Part No.	Head Weight	Head Diameter (inches)	Head Length (inches)	Overall Length (inches)
D041000	1 lbs.	2.15	3.71	11.70
D041001	1.5 lbs.	2.42	4.21	12.87



## Soft Face Hammer-Hickory Handle

Part No.	Head Weight	Head Diameter (inches)	Head Length (inches)	Overall Length (inches)
D041151	8 oz.	1.10	3.15	10.55
D041154	14 oz.	1.34	3.94	11.62



## Hatchet-Hickory Handle

Part No.	Head Weight	Head Diameter (inches)	Head Length (inches)	Overall Length (inches)
D041095	28 oz.	1.52	6.85	17.48

\* Meets A.N.S.I. standards



## Framing Hammer Milled Face-Hickory Handle

Part No.	Head Weight	Head Diameter (inches)	Head Length (inches)	Overall Length (inches)
D041110	25 oz.	1.58	6.21	17.65

\* Meets A.N.S.I. standards

# Hammers

## Drywall Hatchet-Hickory Handle

Part No.	Head Weight	Head Diameter (inches)	Head Length (inches)	Overall Length (inches)
D041120	12 oz.	1.53	5.97	13.63

\* Meets A.N.S.I. standards



## Bricklayer's Hammer-Hickory Handle

Part No.	Head Weight	Head Diameter (inches)	Head Length (inches)	Overall Length (inches)
D041130	24 oz.	1.33	8.15	11.69

\* Meets A.N.S.I. standards



## Shingling Hatchet-Hickory Handle

Part No.	Head Weight	Head Diameter (inches)	Head Length (inches)	Overall Length (inches)
D041140	14 oz.	1.41	6.96	13.14

\* Meets A.N.S.I. standards



# Prv Bars



## Pinch Bar

Part No.	Length (inches)	Shank Size (inches)	Width of Cut (inches)	Weight (lbs)
D056016	16	0.63	0.98	1.30
D056020	20	0.63	0.98	1.68
D056024	24	0.75	1.17	2.94
D056030	30	0.75	1.17	3.95
D056036	36	0.75	1.17	4.68



## Wonder Bar (Nail Puller)

Part No.	Length (inches)	Width of Cut (inches)	Weight (lbs)
D056113	13	1.85	1.19
D056118	18	1.85	1.56



## Crow Bar-Heavy Duty

Part No.	Length (inches)	Width of Cut (inches)	Weight (lbs)
D056214	54	1.14	14.02
D056218	60	1.26	18.19



## Wrecking Bar

Part No.	Length (inches)	Shank Size (inches)	Width of Cut (inches)	Weight (lbs)
D056312	12	0.55	1.06	0.83
D056318	18	0.63	1.18	1.93
D056324	24	0.75	1.42	3.25
D056330	30	0.75	1.42	3.95
D056336	36	0.75	1.42	4.68
D056342	42	0.75	1.42	5.51

# Staplers



## **Worry Free Purchase**

All staplers are backed by a 2 year warranty

## **Complete Assortment**

A variety of staplers and accessories to meet any job requirements.

## **Durable Construction**

All-steel construction provides years of continuous use.

# Staplers

## Staple Gun Tacker

Part No. D087000



- High efficiency, easy-to-carry multipurpose stapler
- Ergonomically designed handle for ease of use
- All steel construction
- Uses fine wire staples

\* Staples, nails and pins sold separately.

### Accessories

Part No.		Pkg Qty.
D087106	1/4" Fine Staples	1,000
D087108	5/16" Fine Staples	1,000

## Staple And Nail Gun

Part No. D087001



- Heavy-duty professional stapler and nail gun
- Patented handle locking mechanism for increased safety
- Switch allows for adjustment of impact power
- All steel durable construction
- Used flat wire staples and brad nails

\* Staples, nails and pins sold separately.

### Accessories

Part No.		Pkg Qty.
D087208	5/16" Flat Staples	1,000
D087210	3/8" Flat Staples	1,000
D087212	1/2" Flat Staples	1,000
D087214	9/16" Flat Staples	1,000
D087414	9/16" Brad Nail	1,000

## 4-in-1 Staple Gun Tacker

Part No. D087002



- Heavy-duty professional stapler and nail gun
- Quick-Jam staple release mechanism
- Knob allows for adjustment of impact power
- Uses flat staples, cable staples, brad nails and brad pins

\* Staples, nails and pins sold separately.

### Accessories

Part No.		Pkg Qty.
D087208	5/16" Flat Staples	1,000
D087210	3/8" Flat Staples	1,000
D087212	1/2" Flat Staples	1,000
D087214	9/16" Flat Staples	1,000
D087314	9/16" Cable Staples	1,000
D087414	9/16" Brad Nail	1,000
D087514	9/16" Brad Pins	1,000

## Hammer Tacker

Part No. D087003



- Durable and easy to use
- Ergonomic rubber handle
- Uses flat wire staples

\* Staples, nails and pins sold separately.

### Accessories

Part No.		Pkg Qty.
D087208	5/16" Flat Staples	1,000
D087210	3/8" Flat Staples	1,000

## 3 Piece Cutting Tool Set

Part No. D040200



**Includes:**  
Drywall Saw  
10" Mini Hacksaw  
12" High-Tension Hacksaw

## Drywall Saw

Part No. D040000



- Makes easy cuts through drywall, wood and plastic
- 6" double-tooth blade design for faster cutting
- Hardened teeth for longer tool life
- Non-slip comfortable handle

## 10" Mini Hacksaw

Part No. D040001



- Lightweight and compact design for access into tight spaces
- Non-slip comfortable handle
- Hardened teeth for longer tool life

## 12" High-Tension Hacksaw

Part No. D040002



- Cuts ferrous and non-ferrous metals and other materials
- Heavy duty durable frame
- Non-slip comfortable handle
- Blade adjustment for straight and 45° cuts



## Flat Files

For fast removal of metal

Part No.	Length	Cut	Weight (lbs)
D094001	8"	Bastard	0.50
D094002	10"	Bastard	0.81
D094003	12"	Bastard	1.20



## Round Files

For sharpening round openings or concave surfaces

Part No.	Length	Cut	Weight (lbs)
D094301	8"	Bastard	0.34
D094302	10"	Bastard	0.48
D094303	12"	Bastard	1.12



## Half Round Files

For concave, convex or flat surfaces

Part No.	Length	Cut	Weight (lbs)
D094101	8"	Bastard	0.48
D094102	10"	Bastard	0.73
D094103	12"	Bastard	0.76



## Mill Files

For sharpening mill or circular saws

Part No.	Length	Cut	Weight (lbs)
D094201	8"	Bastard	0.40
D094202	10"	Bastard	0.60
D094203	12"	Bastard	0.87
D094211	8"	Smooth	0.43
D094212	10"	Smooth	0.59
D094213	12"	Smooth	0.87



# Alphabetical Index

## A

### Adapters

1/4" Drive .....	12
3/8" Drive .....	30
1/2" Drive .....	52

## C

### Chisels

Cold Chisel .....	100
Sets .....	98

### C-Clamps .....

102
-----

## E

### Extensions

1/4" Drive .....	12
3/8" Drive .....	30
1/2" Drive .....	52
3/4" Drive .....	62

## F

### Files .....

119
-----

### Flex Handles

1/4" Drive .....	12
3/8" Drive .....	30
1/2" Drive .....	52
3/4" Drive .....	62

## H

### Hand Driver

1/4" Drive .....	12
------------------	----

### Hammers

Ball Pein .....	104
Bricklayer .....	107
Claw .....	104
Club .....	105
Dead Blow .....	105
Drywall .....	107
Framing .....	106
Hatchet .....	106
Rubber Mallet .....	106
Shingling .....	107
Sledge .....	105
Soft Face .....	105

### Hex Keys .....

81
----

## I

### Insulated

Screwdrivers .....	12
Pliers .....	12

## N

### Nut Drivers .....

90
----

## P

### Pliers

Aviation Snips .....	92
----------------------	----

## P

### Pliers (cont'd)

Bent Nose .....	89
Cable Cutter .....	91
Diagonal .....	89
End Cutter .....	91
Groove Joint .....	90
Linesman .....	90
Locking .....	95-96
Long Nose .....	89
Sets .....	96,97,101
Slip Joint .....	90
Tin Snips .....	91
Water Pump .....	94

### Pry Bars

Crow Bar .....	108
Pinch Bar .....	108
Wonder Bar .....	108
Wrecking Bar .....	108

### Pullers .....

102
-----

### Punches

Centre .....	100
Drift .....	100
Pin .....	100
Sets .....	98-99
Solid .....	100

## R

### Ratchets

1/4" Drive .....	11
3/8" Drive .....	29
1/2" Drive .....	52
3/4" Drive .....	58

## S

### Saws .....

118
-----

### Screwdrivers

Phillips® .....	83
Sets .....	80-82
Slotted .....	85
Square Recess .....	84
Torx® .....	86

### Sockets

Hex Head	
3/8" Drive .....	33-34
1/2" Drive .....	51-52
Sets	
3/8" Drive .....	20-22
1/2" Drive .....	42-43
Phillips®	
3/8" Drive .....	35
Slotted	
3/8" Drive .....	35

## S

### Sockets (cont'd)

Torx®	
1/4" Drive .....	15
3/8" Drive .....	35
1/2" Drive .....	52

### Sets

1/4" Drive .....	9
3/8" Drive .....	23
1/2" Drive .....	48

### Chrome

1/4" Drive .....	6
3/8" Drive .....	16
1/2" Drive .....	42
3/4" Drive .....	61

### Impact

3/8" Drive .....	38
1/2" Drive .....	57
3/4" Drive .....	64

### Spark Plug

3/8" Drive .....	28
------------------	----

### Staplers ...

116-117
---------

### Staples

Brad Nail .....	116
Brad Pin .....	117
Cable Staples .....	117
Fine Staples .....	116
Flat Staples .....	116

## T

### T-Handles

1/4" Drive .....	12
3/8" Drive .....	30
1/2" Drive .....	52
3/4" Drive .....	62

## U

### U-Joints

1/4" Drive .....	12
3/8" Drive .....	30
1/2" Drive .....	52
3/4" Drive .....	62

## V

### Vises .....

102
-----

## W

### Wrenches

Adjustable .....	80
Combination .....	68-73
Pipe .....	80
Ratcheting .....	74-79

# Numerical Index

D001002	.....12	D003309	.....13	D006008	.....34	D006954	.....33
D001004	.....12	D003310	.....13	D006009	.....34	D006956	.....33
D001006	.....12	D003311	.....13	D006010	.....34	D006958	.....33
D001101	.....12	D003312	.....13	D006052	.....33	D006960	.....33
D001201	.....12	D003314	.....13	D006053	.....33	D006962	.....33
D001301	.....11	D003316	.....13	D006054	.....33	D007008	.....41
D001302	.....11	D003318	.....13	D006056	.....33	D007009	.....41
D001306	.....11	D003404	.....13	D006058	.....33	D007010	.....41
D001307	.....11	D003406	.....13	D006060	.....33	D007011	.....41
D001500	.....12	D003408	.....13	D006062	.....33	D007012	.....41
D001601	.....12	D003409	.....13	D006105	.....35	D007013	.....41
D001800	.....12	D003410	.....13	D006106	.....35	D007014	.....41
D002308	.....15	D003411	.....13	D006107	.....35	D007015	.....41
D002309	.....15	D003412	.....13	D006108	.....35	D007016	.....41
D002310	.....15	D003414	.....13	D006201	.....35	D007017	.....41
D002315	.....15	D003416	.....13	D006202	.....35	D007018	.....41
D002320	.....15	D003418	.....13	D006203	.....35	D007019	.....41
D002325	.....15	D003504	.....13	D006204	.....35	D007208	.....41
D002327	.....15	D003506	.....13	D006315	.....35	D007209	.....41
D002330	.....15	D003508	.....13	D006320	.....35	D007210	.....41
D003004	.....14	D003509	.....13	D006325	.....35	D007211	.....41
D003005	.....14	D003510	.....13	D006327	.....35	D007212	.....41
D003006	.....14	D003511	.....13	D006330	.....35	D007213	.....41
D003007	.....14	D003512	.....13	D006340	.....35	D007214	.....41
D003008	.....14	D003514	.....13	D006345	.....35	D007215	.....41
D003009	.....14	D003516	.....13	D006350	.....35	D007216	.....41
D003010	.....14	D003518	.....13	D006355	.....35	D007217	.....41
D003011	.....14	D004000	.....6	D006404	.....34	D007218	.....41
D003012	.....14	D004001	.....6	D006405	.....34	D007219	.....41
D003013	.....14	D004002	.....7	D006406	.....34	D007310	.....40
D003014	.....14	D004003	.....8	D006407	.....34	D007312	.....40
D003015	.....14	D004004	.....9	D006408	.....34	D007314	.....40
D003045	.....14	D004005	.....10	D006409	.....34	D007316	.....40
D003055	.....14	D004006	.....10	D006410	.....34	D007318	.....40
D003104	.....14	D004007	.....7	D006452	.....33	D007320	.....40
D003105	.....14	D004008	.....8	D006453	.....33	D007322	.....40
D003106	.....14	D004009	.....9	D006454	.....33	D007324	.....40
D003107	.....14	D005003	.....30	D006456	.....33	D007510	.....40
D003108	.....14	D005006	.....30	D006458	.....33	D007512	.....40
D003109	.....14	D005010	.....30	D006460	.....33	D007514	.....40
D003110	.....14	D005023	.....30	D006462	.....33	D007516	.....40
D003111	.....14	D005026	.....30	D006715	.....35	D007518	.....40
D003112	.....14	D005030	.....30	D006720	.....35	D007520	.....40
D003204	.....14	D005301	.....29	D006725	.....35	D007522	.....40
D003205	.....14	D005302	.....29	D006727	.....35	D007524	.....40
D003206	.....14	D005306	.....29	D006730	.....35	D008006	.....32
D003207	.....14	D005307	.....29	D006740	.....35	D008007	.....32
D003208	.....14	D005308	.....29	D006745	.....35	D008008	.....32
D003209	.....14	D005401	.....30	D006750	.....35	D008009	.....32
D003210	.....14	D005402	.....30	D006755	.....35	D008010	.....32
D003211	.....14	D005500	.....30	D006904	.....34	D008011	.....32
D003212	.....14	D005601	.....30	D006905	.....34	D008012	.....32
D003213	.....14	D005701	.....30	D006906	.....34	D008013	.....32
D003214	.....14	D005702	.....30	D006907	.....34	D008014	.....32
D003255	.....14	D005800	.....30	D006908	.....34	D008015	.....32
D003303	.....13	D006004	.....34	D006909	.....34	D008016	.....32
D003304	.....13	D006005	.....34	D006910	.....34	D008017	.....32
D003306	.....13	D006006	.....34	D006952	.....33	D008018	.....32
D003308	.....13	D006007	.....34	D006953	.....33	D008019	.....32

# Numerical Index

D008020 .....32	D008648 .....36	D009616 .....31	D012302 .....52
D008021 .....32	D008650 .....36	D009618 .....31	D012308 .....52
D008022 .....32	D008652 .....36	D009620 .....31	D012500 .....52
D008023 .....32	D008654 .....36	D009622 .....31	D012600 .....52
D008024 .....32	D008710 .....37	D009624 .....31	D012701 .....52
D008206 .....32	D008711 .....37	D009626 .....31	D012800 .....52
D008207 .....32	D008712 .....37	D009628 .....31	D013006 .....55
D008208 .....32	D008713 .....37	D009630 .....31	D013008 .....55
D008209 .....32	D008714 .....37	D009632 .....31	D013010 .....55
D008210 .....32	D008715 .....37	D009706 .....32	D013012 .....55
D008211 .....32	D008716 .....37	D009707 .....32	D013014 .....55
D008212 .....32	D008717 .....37	D009708 .....32	D013017 .....55
D008213 .....32	D008718 .....37	D009709 .....32	D013019 .....55
D008214 .....32	D008719 .....37	D009710 .....32	D013058 .....55
D008215 .....32	D008760 .....36	D009711 .....32	D013060 .....55
D008216 .....32	D008761 .....36	D009712 .....32	D013062 .....55
D008217 .....32	D008762 .....36	D009713 .....32	D013064 .....55
D008218 .....32	D008763 .....36	D009714 .....32	D013066 .....55
D008219 .....32	D008764 .....36	D009715 .....32	D013068 .....55
D008220 .....32	D008765 .....36	D009716 .....32	D013070 .....55
D008221 .....32	D008766 .....36	D009717 .....32	D013074 .....55
D008222 .....32	D008767 .....36	D009718 .....32	D013320 .....56
D008223 .....32	D008768 .....36	D009719 .....32	D013325 .....56
D008308 .....31	D008769 .....36	D010000 .....16	D013327 .....56
D008310 .....31	D009106 .....32	D010001 .....16	D013330 .....56
D008312 .....31	D009107 .....32	D010002 .....17	D013340 .....56
D008314 .....31	D009108 .....32	D010003 .....17	D013345 .....56
D008316 .....31	D009109 .....32	D010004 .....18	D013350 .....56
D008318 .....31	D009110 .....32	D010005 .....18	D013406 .....56
D008320 .....31	D009111 .....32	D010006 .....19	D013408 .....56
D008322 .....31	D009112 .....32	D010007 .....19	D013410 .....56
D008324 .....31	D009113 .....32	D010008 .....26	D013412 .....56
D008326 .....31	D009114 .....32	D010009 .....26	D013414 .....56
D008328 .....31	D009115 .....32	D010010 .....27	D013417 .....56
D008330 .....31	D009116 .....32	D010011 .....27	D013419 .....56
D008332 .....31	D009117 .....32	D010012 .....28	D013458 .....55
D008508 .....31	D009118 .....32	D010013 .....28	D013460 .....55
D008510 .....31	D009119 .....32	D010014 .....20	D013462 .....55
D008512 .....31	D009120 .....32	D010015 .....20	D013464 .....55
D008514 .....31	D009121 .....32	D010016 .....21	D013466 .....55
D008516 .....31	D009122 .....32	D010017 .....22	D013468 .....55
D008518 .....31	D009123 .....32	D010018 .....23	D013470 .....55
D008520 .....31	D009408 .....31	D010019 .....23	D013474 .....55
D008522 .....31	D009410 .....31	D010020 .....38	D013720 .....56
D008524 .....31	D009412 .....31	D010021 .....38	D013725 .....56
D008526 .....31	D009414 .....31	D010022 .....39	D013727 .....56
D008528 .....31	D009416 .....31	D010023 .....39	D013730 .....56
D008530 .....31	D009418 .....31	D010024 .....21	D013740 .....56
D008532 .....31	D009420 .....31	D010025 .....22	D013745 .....56
D008612 .....37	D009422 .....31	D010026 .....25	D013750 .....56
D008614 .....37	D009424 .....31	D010027 .....25	D014008 .....60
D008616 .....37	D009426 .....31	D010028 .....24	D014009 .....60
D008618 .....37	D009428 .....31	D010029 .....24	D014010 .....60
D008620 .....37	D009430 .....31	D012005 .....52	D014011 .....60
D008622 .....37	D009432 .....31	D012010 .....52	D014012 .....60
D008624 .....37	D009608 .....31	D012023 .....52	D014013 .....60
D008642 .....36	D009610 .....31	D012025 .....52	D014014 .....60
D008644 .....36	D009612 .....31	D012030 .....52	D014015 .....60
D008646 .....36	D009614 .....31	D012301 .....52	D014016 .....60

# Numerical Index

D014017 .....60	D014518 .....59	D015628 .....53	D016220 .....54
D014018 .....60	D014520 .....59	D015630 .....53	D016221 .....54
D014019 .....60	D014522 .....59	D015632 .....53	D016222 .....54
D014020 .....60	D014524 .....59	D015634 .....53	D016223 .....54
D014021 .....60	D014526 .....59	D015636 .....53	D016224 .....54
D014022 .....60	D014528 .....59	D015638 .....53	D016225 .....54
D014023 .....60	D014530 .....59	D015640 .....53	D016226 .....54
D014024 .....60	D014532 .....59	D015642 .....53	D016227 .....54
D014025 .....60	D014534 .....59	D015710 .....54	D016228 .....54
D014026 .....60	D014536 .....59	D015711 .....54	D016229 .....54
D014027 .....60	D014538 .....59	D015712 .....54	D016230 .....54
D014028 .....60	D014540 .....59	D015713 .....54	D016231 .....54
D014029 .....60	D014542 .....59	D015714 .....54	D016232 .....54
D014030 .....60	D014544 .....59	D015715 .....54	D016312 .....53
D014031 .....60	D015110 .....54	D015716 .....54	D016314 .....53
D014032 .....60	D015111 .....54	D015717 .....54	D016316 .....53
D014036 .....60	D015112 .....54	D015718 .....54	D016318 .....53
D014208 .....60	D015113 .....54	D015719 .....54	D016320 .....53
D014209 .....60	D015114 .....54	D015720 .....54	D016322 .....53
D014210 .....60	D015115 .....54	D015721 .....54	D016324 .....53
D014211 .....60	D015116 .....54	D015722 .....54	D016326 .....53
D014212 .....60	D015117 .....54	D015723 .....54	D016328 .....53
D014213 .....60	D015118 .....54	D015724 .....54	D016330 .....53
D014214 .....60	D015119 .....54	D015725 .....54	D016332 .....53
D014215 .....60	D015120 .....54	D015726 .....54	D016334 .....53
D014216 .....60	D015121 .....54	D015727 .....54	D016336 .....53
D014217 .....60	D015122 .....54	D016010 .....54	D016338 .....53
D014218 .....60	D015123 .....54	D016011 .....54	D016340 .....53
D014219 .....60	D015124 .....54	D016012 .....54	D016342 .....53
D014220 .....60	D015125 .....54	D016013 .....54	D016512 .....53
D014221 .....60	D015126 .....54	D016014 .....54	D016514 .....53
D014222 .....60	D015127 .....54	D016015 .....54	D016516 .....53
D014223 .....60	D015128 .....54	D016016 .....54	D016518 .....53
D014224 .....60	D015130 .....54	D016017 .....54	D016520 .....53
D014227 .....60	D015132 .....54	D016018 .....54	D016522 .....53
D014230 .....60	D015412 .....53	D016019 .....54	D016524 .....53
D014236 .....60	D015414 .....53	D016020 .....54	D016526 .....53
D014312 .....59	D015416 .....53	D016021 .....54	D016528 .....53
D014314 .....59	D015418 .....53	D016022 .....54	D016530 .....53
D014316 .....59	D015420 .....53	D016023 .....54	D016532 .....53
D014318 .....59	D015422 .....53	D016024 .....54	D016534 .....53
D014320 .....59	D015424 .....53	D016025 .....54	D016536 .....53
D014322 .....59	D015426 .....53	D016026 .....54	D016538 .....53
D014324 .....59	D015428 .....53	D016027 .....54	D016540 .....53
D014326 .....59	D015430 .....53	D016028 .....54	D016542 .....53
D014328 .....59	D015432 .....53	D016029 .....54	D018000 .....42
D014330 .....59	D015434 .....53	D016030 .....54	D018001 .....42
D014332 .....59	D015436 .....53	D016031 .....54	D018002 .....43
D014334 .....59	D015438 .....53	D016032 .....54	D018003 .....43
D014336 .....59	D015440 .....53	D016210 .....54	D018004 .....44
D014338 .....59	D015442 .....53	D016211 .....54	D018005 .....44
D014340 .....59	D015612 .....53	D016212 .....54	D018006 .....45
D014342 .....59	D015614 .....53	D016213 .....54	D018007 .....45
D014344 .....59	D015616 .....53	D016214 .....54	D018008 .....49
D014346 .....59	D015618 .....53	D016215 .....54	D018009 .....49
D014348 .....59	D015620 .....53	D016216 .....54	D018010 .....51
D014512 .....59	D015622 .....53	D016217 .....54	D018011 .....51
D014514 .....59	D015624 .....53	D016218 .....54	D018012 .....50
D014516 .....59	D015626 .....53	D016219 .....54	D018013 .....50

# Numerical Index

D018014	47	D020358	65	D022454	63	D055009	98
D018015	47	D020360	65	D022456	63	D055010	98
D018016	48	D020362	65	D022458	63	D055011	98
D018017	48	D020364	65	D022460	63	D055012	98
D018018	46	D020366	65	D022464	63	D055013	98
D018019	46	D020368	65	D023000	61	D055014	98
D018020	57	D020370	65	D023001	61	D055028	100
D018021	57	D020372	65	D040000	118	D055029	100
D018022	58	D020374	65	D040001	118	D055030	100
D018023	58	D020376	65	D040002	118	D055031	99
D019004	62	D020524	65	D040200	118	D055032	99
D019008	62	D020526	65	D041000	112	D055033	99
D019016	62	D020528	65	D041001	112	D055034	99
D019301	62	D020530	65	D041010	110	D055035	99
D019501	62	D020532	65	D041011	110	D055036	99
D019800	62	D020534	65	D041020	110	D055037	99
D020024	66	D020536	65	D041022	110	D055038	97
D020027	66	D020538	65	D041023	110	D055100	93
D020028	66	D020540	65	D041024	110	D055101	93
D020030	66	D020542	65	D041025	110	D055102	93
D020032	66	D020544	65	D041027	110	D055103	93
D020033	66	D020546	65	D041028	110	D055104	94
D020034	66	D020548	65	D041029	110	D055105	94
D020035	66	D020550	65	D041040	111	D055106	94
D020036	66	D020552	65	D041041	111	D055107	94
D020038	66	D021000	64	D041042	111	D055108	94
D020040	66	D021001	64	D041043	111	D055109	94
D020041	66	D022119	63	D041044	111	D055200	96
D020042	66	D022120	63	D041045	111	D055201	96
D020043	66	D022121	63	D041060	111	D055205	100
D020046	66	D022122	63	D041061	111	D055210	93
D020050	66	D022123	63	D041065	111	D055301	101
D020219	66	D022124	63	D041067	111	D055302	101
D020227	66	D022125	63	D041069	111	D055303	101
D020230	66	D022126	63	D041095	112	D055304	101
D020232	66	D022127	63	D041110	112	D055305	101
D020233	66	D022128	63	D041120	113	D055306	101
D020235	66	D022129	63	D041130	113	D055307	101
D020236	66	D022130	63	D041140	113	D055308	102
D020238	66	D022132	63	D041151	112	D055309	102
D020241	66	D022135	63	D041154	112	D055310	102
D020243	66	D022136	63	D043201	81	D055311	102
D020324	65	D022138	63	D043202	81	D055312	101
D020326	65	D022141	63	D043203	81	D055313	101
D020328	65	D022146	63	D043204	81	D055314	102
D020330	65	D022150	63	D043205	81	D055315	102
D020332	65	D022428	63	D043206	82	D055316	101
D020334	65	D022430	63	D043207	82	D055401	102
D020336	65	D022432	63	D043208	82	D055530	97
D020338	65	D022434	63	D043209	82	D056016	114
D020340	65	D022436	63	D055000	97	D056020	114
D020342	65	D022438	63	D055001	97	D056024	114
D020344	65	D022440	63	D055002	97	D056030	114
D020346	65	D022442	63	D055003	97	D056036	114
D020348	65	D022444	63	D055004	97	D056113	114
D020350	65	D022446	63	D055005	97	D056118	114
D020352	65	D022448	63	D055006	97	D056214	114
D020354	65	D022450	63	D055007	98	D056218	114
D020356	65	D022452	63	D055008	98	D056312	114

# Numerical Index

D056318 .....114	D062104 .....87	D072012 .....80	D074320 .....73
D056324 .....114	D062105 .....87	D072015 .....80	D074322 .....73
D056330 .....114	D062106 .....87	D072018 .....80	D074324 .....73
D056336 .....114	D062107 .....87	D074008 .....72	D074326 .....73
D056342 .....114	D062108 .....87	D074010 .....72	D074328 .....73
D058001 .....106	D062109 .....87	D074012 .....72	D074330 .....73
D058002 .....106	D062110 .....87	D074014 .....72	D074332 .....73
D058003 .....106	D062201 .....88	D074016 .....72	D074334 .....73
D058004 .....106	D062202 .....88	D074018 .....72	D074336 .....73
D058005 .....106	D062203 .....88	D074020 .....72	D074340 .....73
D058006 .....106	D062204 .....88	D074022 .....72	D074342 .....73
D058007 .....106	D062205 .....88	D074024 .....72	D074344 .....73
D058008 .....106	D062206 .....88	D074026 .....72	D074346 .....73
D058009 .....106	D062207 .....88	D074028 .....72	D074348 .....73
D058010 .....106	D062208 .....88	D074030 .....72	D074350 .....73
D058011 .....106	D062209 .....88	D074032 .....72	D074352 .....73
D058012 .....106	D062210 .....88	D074034 .....72	D074354 .....73
D058013 .....106	D062211 .....88	D074036 .....72	D074356 .....73
D058014 .....106	D062300 .....90	D074040 .....72	D074358 .....73
D058015 .....106	D062301 .....90	D074106 .....72	D074360 .....73
D058016 .....106	D062302 .....90	D074107 .....72	D074362 .....73
D058017 .....106	D062303 .....90	D074108 .....72	D074364 .....73
D058018 .....106	D062304 .....90	D074109 .....72	D074366 .....73
D058019 .....106	D062305 .....90	D074110 .....72	D074368 .....73
D058020 .....106	D062306 .....90	D074111 .....72	D074406 .....73
D058021 .....106	D062401 .....90	D074112 .....72	D074407 .....73
D058030 .....106	D062402 .....90	D074113 .....72	D074408 .....73
D058101 .....106	D062403 .....90	D074114 .....72	D074409 .....73
D058102 .....106	D062404 .....90	D074115 .....72	D074410 .....73
D058103 .....106	D062405 .....90	D074116 .....72	D074411 .....73
D058104 .....106	D062406 .....90	D074117 .....72	D074412 .....73
D058105 .....106	D062407 .....90	D074118 .....72	D074413 .....73
D058106 .....106	D062408 .....90	D074119 .....72	D074414 .....73
D058107 .....106	D062409 .....90	D074120 .....72	D074415 .....73
D058108 .....106	D062410 .....90	D074121 .....72	D074416 .....73
D058109 .....106	D062411 .....90	D074122 .....72	D074417 .....73
D058110 .....106	D062412 .....90	D074123 .....72	D074418 .....73
D058200 .....104	D062413 .....90	D074124 .....72	D074419 .....73
D058201 .....104	D062414 .....90	D074125 .....72	D074420 .....73
D058202 .....105	D062500 .....84	D074126 .....72	D074421 .....73
D058203 .....105	D062501 .....85	D074127 .....72	D074422 .....73
D062001 .....89	D062502 .....85	D074128 .....72	D074423 .....73
D062002 .....89	D062503 .....86	D074129 .....72	D074424 .....73
D062003 .....89	D062504 .....86	D074130 .....72	D074425 .....73
D062004 .....89	D062505 .....84	D074132 .....72	D074426 .....73
D062005 .....89	D062506 .....86	D074201 .....68	D074427 .....73
D062006 .....89	D062507 .....85	D074202 .....68	D074428 .....73
D062007 .....89	D062508 .....86	D074203 .....69	D074429 .....73
D062008 .....89	D062701 .....92	D074204 .....69	D074430 .....73
D062009 .....89	D062702 .....92	D074221 .....71	D074432 .....73
D062010 .....89	D062703 .....92	D074222 .....71	D076010 .....76
D062011 .....89	D062704 .....92	D074223 .....70	D076012 .....76
D062012 .....89	D062705 .....92	D074224 .....70	D076014 .....76
D062013 .....89	D062706 .....92	D074308 .....73	D076016 .....76
D062014 .....89	D062720 .....92	D074310 .....73	D076018 .....76
D062015 .....89	D072004 .....80	D074312 .....73	D076020 .....76
D062101 .....87	D072006 .....80	D074314 .....73	D076022 .....76
D062102 .....87	D072008 .....80	D074316 .....73	D076024 .....76
D062103 .....87	D072010 .....80	D074318 .....73	D076108 .....76

# Numerical Index

D076109 .....	.76	D081113 .....	.79
D076110 .....	.76	D081114 .....	.79
D076111 .....	.76	D081201 .....	.77
D076112 .....	.76	D081202 .....	.78
D076113 .....	.76	D081203 .....	.77
D076114 .....	.76	D081204 .....	.78
D076115 .....	.76	D087000 .....	.116
D076116 .....	.76	D087001 .....	.116
D076117 .....	.76	D087002 .....	.117
D076118 .....	.76	D087003 .....	.117
D076119 .....	.76	D087106 .....	.116
D076210 .....	.76	D087108 .....	.116
D076212 .....	.76	D087208 .....	.116
D076214 .....	.76	D087210 .....	.116
D076216 .....	.76	D087212 .....	.116
D076218 .....	.76	D087214 .....	.116
D076220 .....	.76	D087314 .....	.117
D076222 .....	.76	D087414 .....	.116
D076224 .....	.76	D087514 .....	.117
D076308 .....	.76	D090001 .....	.108
D076309 .....	.76	D090002 .....	.108
D076310 .....	.76	D090003 .....	.108
D076311 .....	.76	D090004 .....	.108
D076312 .....	.76	D090005 .....	.108
D076313 .....	.76	D090006 .....	.108
D076314 .....	.76	D090007 .....	.108
D076315 .....	.76	D092001 .....	.108
D076316 .....	.76	D092002 .....	.108
D076317 .....	.76	D092003 .....	.108
D076318 .....	.76	D092103 .....	.108
D076319 .....	.76	D092104 .....	.108
D076601 .....	.74	D092105 .....	.108
D076603 .....	.74	D093001 .....	.108
D076607 .....	.75	D093002 .....	.108
D076608 .....	.75	D094001 .....	.119
D080014 .....	.80	D094002 .....	.119
D080018 .....	.80	D094003 .....	.119
D080024 .....	.80	D094101 .....	.119
D080036 .....	.80	D094102 .....	.119
D080048 .....	.80	D094103 .....	.119
D081000 .....	.79	D094201 .....	.119
D081001 .....	.79	D094202 .....	.119
D081002 .....	.79	D094203 .....	.119
D081003 .....	.79	D094211 .....	.119
D081004 .....	.79	D094212 .....	.119
D081010 .....	.79	D094213 .....	.119
D081011 .....	.79	D094301 .....	.119
D081012 .....	.79	D094302 .....	.119
D081013 .....	.79	D094303 .....	.119
D081014 .....	.79		
D081100 .....	.79		
D081101 .....	.79		
D081102 .....	.79		
D081103 .....	.79		
D081104 .....	.79		
D081110 .....	.79		
D081111 .....	.79		
D081112 .....	.79		
D081113 .....	.79		



# Notes

# Notes

# Visit our website for new product updates and exciting sales promotions.

Retailer Connect

Search

## Dynamic

Follow Us:



Because You Have Work To Do

HOME

ABOUT

PRODUCTS

WHERE TO BUY

PROMOTIONS

NEWS

CONTACT

### Passionate about tools? Connect with Dynamic Tools through social media.



#### Join the Dynamic online community and enjoy the benefits:

- Get access to exclusive offers & contests
- Be the first to receive new products notifications
- Share your knowledge and experience with others
- Ask questions before you buy
- Expand your social network

Follow us on Twitter



Find us on Facebook



#### DYNAMIC NEWS

Dynamic Tools introduces Contractor Series combination wrenches.



CLICK HERE FOR MORE INFO

#### CURRENT PROMOTIONS

Win Tools That Make Your Job Easier



CLICK HERE FOR MORE INFO

#### WHERE TO BUY

Discover Dynamic at a distributor near you.



CLICK HERE FOR MORE INFO

#### NEWSLETTER SIGN UP

Get exclusive insights on new product introductions and exciting sales promotions.



CLICK HERE FOR MORE INFO

©2011 Copyright | Terms & Conditions | Privacy Policy | Website by Trinitas  
Sitemap: Home | About | Products | Where To Buy | Promotions | News | Contact | Français

# www.dynamictools.ca

Available at:

*www.dynamictools.ca*

*Tel: 1-800-567-0518*

*Fax: 1-800-264-6977*

*E-mail: info@dynamictools.ca*

**Dynamic® is a registered trademark of Gray Tools Canada Inc.**