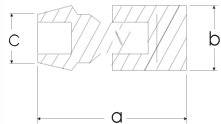
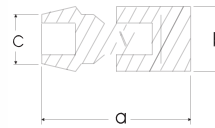


# 3/8" DRIVE SOCKETS & ATTACHMENTS



## 6 Point Universal Joint Sockets Standard Length

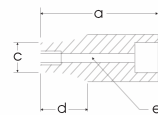
Hex Size	6 Point Part No.	Overall Length in. a	Drive End in. b	Hex End in. c
3/8"	TU120A	1.84	0.74	0.57
7/16"	TU140A	1.84	0.74	0.64
1/2"	TU160A	1.84	0.74	0.74
9/16"	TU180A	1.88	0.74	0.78
5/8"	TU200A	1.88	0.74	0.86
11/16"	TU220A	1.96	0.74	0.93
3/4"	TU240A	1.96	0.74	1.01



## 6 Point Universal Joint Sockets Standard Length

Hex Size	6 Point Part No.	Overall Length mm a	Drive End mm b	Hex End in. c
10mm	MTF10HA	46.8	18.75	14.75
11mm	MTF11HA	46.8	18.75	16.45
12mm	MTF12HA	46.8	18.75	18.15
13mm	MTF13HA	46.8	18.75	18.75
14mm	MTF14HA	47.8	18.75	19.75
15mm	MTF15HA	47.8	18.75	20.75
16mm	MTF16HA	47.8	18.75	21.75
17mm	MTF17HA	51	18.75	23.75
18mm	MTF18HA	51	18.75	24.85
19mm	MTF19HA	51	18.75	27.75

Federal Spec. CDA 39-GP-12b U.S. GGG-W-641E ANSI B107.5



## Double Square - Standard Length

Hex Size	8 Point Part No.	Overall Length in. a	Drive End in. b	Hex End in. c	Taper Length in. d	Bolt Clearance in. e
1/4"	TS8	1.10	0.66	0.5	0.45	0.20
5/16"	TS10	1.10	0.66	0.55	0.45	0.20
3/8"	TS12	1.10	0.66	0.66	—	0.20
7/16"	TS14	1.10	0.7	0.7	—	0.20
1/2"	TS16	1.10	0.86	0.86	—	0.20
9/16"	TS18	1.20	0.94	0.94	—	0.20
5/8"	TS20	1.20	1.02	1.02	—	0.20

Federal Spec. CDA 39-GP-12b U.S. GGG-W-641E ANSI B107.1

Note: NOT FOR IMPACT USE. All items on this page are for hand use only.