



***Dynamic***

***The Tools That Make Your Job Easier***



## Dynamic® Tools- Tools That Make Your Job Easier

You are a busy professional who needs to get the job done quickly and efficiently. The Dynamic® line of tools is designed to offer just that: a cost effective way to complete your demanding projects using reliable and comfortable tools.

The ease-of-use of the tools is reflected across different product categories. The laser etching on the sockets and wrenches make the selection of the right size a breeze. Other product categories such as pliers and screwdrivers feature ergonomic and highly visible handles making the tools easy to spot in the toolbox. All tools have been designed to ensure durability and many years of service.

Most Dynamic® products are backed by a lifetime warranty and Gray's Customer Service, which consistently ranks first in the industry.

We invite you to discover the benefits of the new Dynamic® line at an industrial distributor near you. Our goal is to make your job easier, "Tools That Make Your Job Easier"™ !

The Dynamic® Team



# Contents

## Table of Contents

<b>Master Sets</b> .....	<b>05</b>
<b>Tool Storage</b> .....	<b>12</b>
<b>Sockets &amp; Attachments</b>	
<b>1/4" Drive Chrome</b> .....	<b>19</b>
<b>3/8" Drive Chrome</b> .....	<b>28</b>
<b>3/8" Drive Impact</b> .....	<b>49</b>
<b>1/2" Drive Chrome</b> .....	<b>54</b>
<b>1/2" Drive Impact</b> .....	<b>69</b>
<b>3/4" Drive Chrome</b> .....	<b>73</b>
<b>3/4" Drive Impact</b> .....	<b>76</b>
<b>1" Drive Chrome</b> .....	<b>79</b>
<b>Wrenches</b>	
<b>Combination Wrenches</b> .....	<b>82</b>
<b>Ratcheting Wrenches</b> .....	<b>88</b>
<b>Adjustable Wrenches</b> .....	<b>91</b>
<b>Pipe Wrenches</b> .....	<b>91</b>
<b>Torque Wrenches &amp; Multipliers</b> .....	<b>92</b>
<b>Hex Keys</b> .....	<b>93</b>
<b>Screwdrivers &amp; Nut Drivers</b> .....	<b>97</b>
<b>Electrical Tools</b> .....	<b>103</b>
<b>Pliers</b>	
<b>Comfort Handle</b> .....	<b>109</b>
<b>Snips &amp; Cutters</b> .....	<b>112</b>
<b>Locking</b> .....	<b>114</b>
<b>Punches &amp; Chisels</b> .....	<b>116</b>
<b>Clamping &amp; Extracting</b> .....	<b>120</b>
<b>Striking Tools</b>	
<b>Hammers</b> .....	<b>123</b>
<b>Pry Bars</b> .....	<b>126</b>
<b>Files</b> .....	<b>127</b>
<b>Replacement Parts</b> .....	<b>128</b>
<b>Alphabetical Index</b> .....	<b>129</b>
<b>Numerical Index</b> .....	<b>130</b>

# Why Dynamic

## Better Design For Greater Efficiency



Dynamic tools are designed to help you finish projects faster. Extensive consumer research conducted by independent companies combined with our own tool expertise allowed us to offer tools designed to address the most important hand tool requirements. The laser-etched markings on sockets and wrenches make the selection of the right size a breeze. Other product categories feature ergonomic and highly visible handles making tools easy to spot in any toolbox.

## Higher Quality Standards for Trusted Reliability



By partnering with the most qualified global suppliers capable and willing to comply with our high quality standards, Dynamic offers a large number of professional users in industrial, construction and trades access to reliable tools. Dynamic is offered by a reputable company that has been in the hand tool business since 1912. This tool expertise results in each tool being carefully inspected and tested to make sure it provides many years of service. Furthermore, the vast majority of the products are backed by a no hassle lifetime warranty.

## Select Distribution For Better Service



Dynamic tools are offered through a network of highly specialized distribution partners that are carefully selected to sell and service the line. These focused distributors provide faster service, experienced know how, knowledgeable advice, immediate delivery and personalized post sale service. Because getting the tools you need for the job should not be a hassle.

To locate the Dynamic retailer near you visit our website [www.dynamictools.ca](http://www.dynamictools.ca) and click on Where to Buy.

## Become a Member Of the Dynamic Community

Join the Dynamic Tools community and enjoy the benefits:

- Be the first to receive new product notifications
- Get access to exclusive offers & contests
- Ask questions before you buy
- Expand your social network



[facebook.com/dynamictools](https://facebook.com/dynamictools)



[@dynamictools](https://twitter.com/dynamictools)

[www.dynamictools.ca](http://www.dynamictools.ca)

## Warranty Policy

### Limited Lifetime Warranty:

We stand behind the quality of the products we manufacture & redistribute. In the unlikely event a product fails, warranty will be granted quickly and unconditionally, providing the products were used for the application intended. Products used inappropriately or not maintained properly will not be considered for warranty.

No warranty consideration can be made if the initial inspection shows that the product has been:

- Hammered.
- Heated.
- Used with any device to create additional leverage.
- Machined or modified in any way.
- Used for purposes other than those, which it was designed for.
- Overstressed or over torqued.

Products such as ratchets, flex handles, universal joints, and adjustable wrenches require periodic maintenance and repair. When a product needs repair due to normal wear and tear, the repair will be at the customer's expense.

### Products that carry a limited warranty:

The following products do not qualify for lifetime warranty:

- Toolboxes, torque wrenches, torque multipliers (1 year warranty)

### Non-Warranty Items:

Due to the nature of the product, the following items are not warranted:

- Reducing Adaptors and Impact Universal Joints

Warranty coverage applies to original owner only.

*Please keep your proof of purchase records, which will be required for warranty.*

Gray Tools Canada will be the sole authority in evaluating the products and determining warranty claims and will be glad to replace products qualifying for warranty received prepaid. Gray Tools Canada shall not be liable for any damage or injury due to product failure.

If your product qualifies for warranty, please return it to your local distributor, or call our Customer Service department for a warranty inspection number and further instructions.

## 367 Piece Advanced Master Set

D096001



For complete set content see page 6

## 283 Piece Intermediate Master Set

D096002



For complete set content see page 7

## 198 Piece Starter Master Set

D096003



For complete set content see page 8

# Master Sets

## 367 Piece Advanced Master Set

D096001

1/4" Drive Extension 2"  
1/4" Drive Extension 4"  
1/4" Drive Extension 6"  
1/4" Drive Spinner Handle  
1/4" Drive 45 Tooth Ratchet- Chrome Handle  
1/4" Drive Swivel Head Ratchet  
1/4" Drive Stubby Ratchet - 48 Teeth  
1/4" Drive Sliding T-Handle  
1/4" Drive Universal Joint  
1/4" Drive Flex Handle  
1/4" Drive Chrome Sockets-Metric, 6 Point, Regular Length: 4, 5, 5.5, 6, 7, 8, 9, 10, 11, 12, 13, 14, 15 mm  
1/4" Drive Chrome Sockets-Metric, 6 Point, Deep: 4, 5, 5.5, 6, 7, 8, 9, 10, 11, 12, 13, 14 mm  
1/4" Drive Chrome Sockets-SAE, 6 Point, Regular Length: 5/32", 3/16", 7/32", 1/4", 9/32", 5/16", 11/32", 3/8", 7/16", 1/2", 9/16"  
1/4" Drive Chrome Sockets-SAE, 6 Point, Deep: 3/16", 7/32", 1/4", 9/32", 5/16", 11/32", 3/8", 7/16", 1/2", 9/16"  
3/8" Drive Extension 3"  
3/8" Drive Extension 6"  
3/8" Drive Extension 10"  
3/8" Drive 45 Tooth Ratchet Chrome Handle  
3/8" Drive Stubby Ratchet - 48 Teeth  
3/8" Sliding T-Handle  
3/8" Flex Handle  
3/8" Drive Chrome Sockets-Metric, 6 Point, Regular Length: 6, 7, 8, 9, 10, 11, 12, 13, 14, 15, 16, 17, 18, 19 mm  
3/8" Drive Chrome Sockets-Metric, 6 Point, Deep: 6, 7, 8, 9, 10, 11, 12, 13, 14, 15, 16, 17, 18, 19 mm  
3/8" Drive Chrome Sockets-SAE, 6 Point, Regular Length: 1/4", 5/16", 3/8", 7/16", 1/2", 9/16", 5/8", 11/16", 3/4", 13/16", 7/8", 15/16", 1"  
3/8" Drive Chrome Sockets-SAE, 6 Point, Deep: 1/4", 5/16", 3/8", 7/16", 1/2", 9/16", 5/8", 11/16", 3/4", 13/16", 7/8", 15/16", 1"  
1/2" Drive Extension 5"  
1/2" Drive Extension 10"  
1/2" Drive T-Handle Head  
1/2" Drive 45 Tooth Ratchet Chrome Handle  
1/2" Drive Chrome Sockets-Metric, 6 Point, Regular Length: 10, 11, 12, 13, 14, 15, 16, 17, 18, 19, 20, 21, 22, 23, 24, 25, 26, 27, 28 mm  
1/2" Drive Chrome Sockets-Metric, 6 Point, Deep: 10, 11, 12, 13, 14, 15, 16, 17, 18, 19, 20, 21, 22, 23, 24, 25, 26, 27, 28 mm  
1/2" Drive Chrome Sockets-SAE, 6 Point, Regular Length: 3/8", 7/16", 1/2", 9/16", 5/8", 11/16", 3/4", 13/16", 7/8", 15/16", 1", 1-1/16", 1-1/8", 1-3/16", 1-1/4", 1-5/16"  
1/2" Drive Chrome Sockets-SAE, 6 Point, Deep: 3/8", 7/16", 1/2", 9/16", 5/8", 11/16", 3/4", 13/16", 7/8", 15/16", 1", 1-1/16", 1-1/8", 1-3/16", 1-1/4", 1-5/16"  
1.5 lb Rubber Mallet-Hickory Handle  
16 oz Claw Hammer-Fiberglass Handle  
16 oz Ball Pein Hammer-Fiberglass Handle  
2 1/2 lb Club Hammer-Fiberglass Handle  
14 oz Soft Face Hammer  
Metric Hex-Keys-Regular Length: 0.7, 0.9, 1.3, 1.5, 2, 2.5, 3, 4, 4.5, 5, 5.5, 6, 7, 8, 10 mm  
SAE Hex Keys-Long: 0.028", 0.035", 0.05", 1/16", 5/64", 3/32", 7/64", 1/8", 9/64", 5/32", 3/16", 7/32", 1/4", 5/16", 3/8"  
8" Linesman Pliers Comfort Grip  
7" Diagonal Cutting Pliers Comfort Grip  
8" Long Nose Pliers Comfort Grip  
8" Bent Nose Pliers Comfort Grip  
8" Slip Joint Pliers Comfort Grip  
Aviation Snip-Right Hand  
Aviation Snip-Straight  
Aviation Snip-Left Hand  
10" Locking Plier Straight Jaws  
10" Locking Plier Curved Jaws  
7" Locking Plier-Curved Jaws With Wire Cutter  
6" Locking Pliers-Long Nose  
5" Locking Plier-Curved Jaws With Wire Cutter  
Cold Chisel 5/16", 1/2", 5/8", 3/4", 7/8"  
Centre Punch 1/8", 5/32", 1/4"  
Solid Punch 1/8", 3/16", 1/4"  
Drift Punch 3/16", 1/4"  
Pin Punch 1/8", 3/16", 1/4"  
Nut Driver SAE: 3/16", 1/4", 5/16", 11/32", 3/8", 7/16", 1/2"  
Nut Driver Metric: 5, 6, 7, 8, 9, 10, 11 mm  
Phillips® Screwdrivers: #0, 1, 2, 3  
Phillips® Stubby Screwdrivers: #2  
Slotted Screwdrivers: 5/32", 3/16", 1/4", 5/16", 3/8"  
Slotted Stubby Screwdrivers: 1/4"  
Square Recess Screwdrivers: #0, 1, 2, 3  
Square Recess Stubby Screwdrivers: #1, 2  
Offset Phillips® Screwdrivers: #1, 2  
Offset Slotted Screwdrivers: 3/16", 1/4"  
Offset Square Recess Screwdrivers: #1, 2  
Circuit Tester 110V  
Magnetic Bit Holder  
Tamper Torx® Bits: T10, T15, T20, T25, T27, T30, T40  
Hex Bits: 2, 2.5, 3, 4, 5, 6, 8  
Phillips® Precision Screwdrivers: PH000, PH00, PH0  
Slotted Precision Screwdrivers: 3/64", 5/64", 3/32", 1/8"  
Adjustable Wrench: 8", 10"  
Combination Wrenches SAE: 3/8", 7/16", 1/2", 9/16", 5/8", 11/16", 3/4", 13/16", 7/8", 15/16", 1", 1-1/16", 1-1/8", 1-1/4"  
Combination Wrenches Metric: 6, 7, 8, 9, 10, 11, 12, 13, 14, 15, 16, 17, 18, 19, 20, 21, 22, 23, 24 mm  
Reversible Ratcheting Wrenches SAE: 5/16", 3/8", 7/16", 1/2", 9/16", 5/8", 11/16", 3/4"  
Reversible Ratcheting Wrenches Metric: 8, 9, 10, 11, 12, 13, 14, 15, 16, 17, 18, 19 mm



## 283 Piece Intermediate Master Set

D096002

1/4" Drive Extension 2"  
1/4" Drive Extension 4"  
1/4" Drive Extension 6"  
1/4" Drive Spinner Handle  
1/4" Drive 45 Tooth Ratchet- Chrome Handle  
1/4" Drive Swivel Head Ratchet  
1/4" Drive Stubby Ratchet - 48 Teeth  
1/4" Drive Sliding T-Handle  
1/4" Drive Universal Joint  
1/4" Drive Flex Handle  
1/4" Drive Chrome Sockets-Metric, 6 Point, Regular Length:  
4, 5, 5.5, 6, 7, 8, 9, 10, 11, 12, 13, 14, 15 mm  
1/4" Drive Chrome Sockets-SAE, 6 Point, Regular Length:  
5/32", 3/16", 7/32", 1/4", 9/32", 5/16", 11/32", 3/8", 7/16",  
1/2", 9/16"  
3/8" Drive Extension 3"  
3/8" Drive Extension 6"  
3/8" Drive Extension 10"  
3/8" Drive 45 Tooth Ratchet Chrome Handle  
3/8" Drive Stubby Ratchet - 48 Teeth  
3/8" Sliding T-Handle  
3/8" Flex Handle  
3/8" Drive Chrome Sockets-Metric, 6 Point, Regular Length:  
6, 7, 8, 9, 10, 11, 12, 13, 14, 15, 16, 17, 18, 19 mm  
3/8" Drive Chrome Sockets-SAE, 6 Point, Regular Length:  
1/4", 5/16", 3/8", 7/16", 1/2", 9/16", 5/8", 11/16", 3/4", 13/16",  
7/8", 15/16", 1"  
1/2" Drive Extension 5"  
1/2" Drive Extension 10"  
1/2" Drive T-Handle Head  
1/2" Drive 45 Tooth Ratchet Chrome Handle  
1/2" Drive Chrome Sockets-Metric, 6 Point, Regular Length:  
10, 11, 12, 13, 14, 15, 16, 17, 18, 19, 20, 21, 22, 23, 24, 25, 26,  
27, 28 mm  
1/2" Drive Chrome Sockets-SAE, 6 Point, Regular Length:  
3/8", 7/16", 1/2", 9/16", 5/8", 11/16", 3/4", 13/16", 7/8",  
15/16", 1", 1-1/16", 1-1/8", 1-3/16", 1-1/4", 1-5/16"  
1.5 lb Rubber Mallet-Hickory Handle  
16 oz Claw Hammer-Fiberglass Handle  
16 oz Ball Pein Hammer-Fiberglass Handle  
2 1/2 lb Club Hammer-Fiberglass Handle  
14 oz Soft Face Hammer  
Metric Hex-Keys-Regular Length: 0.7, 0.9, 1.3, 1.5, 2, 2.5, 3, 4,  
4.5, 5, 5.5, 6, 7, 8, 10 mm  
SAE Hex Keys-Long: 0.028", 0.035", 0.05", 1/16", 5/64", 3/32",  
7/64", 1/8", 9/64", 5/32", 3/16", 7/32", 1/4", 5/16", 3/8"  
8" Linesman Pliers Comfort Grip  
7" Diagonal Cutting Pliers Comfort Grip  
8" Long Nose Pliers Comfort Grip  
8" Bent Nose Pliers Comfort Grip  
8" Slip Joint Pliers Comfort Grip  
Aviation Snip-Right Hand  
Aviation Snip-Straight  
Aviation Snip-Left Hand  
10" Locking Plier Straight Jaws  
10" Locking Plier Curved Jaws  
7" Locking Plier-Curved Jaws With Wire Cutter  
6" Locking Pliers-Long Nose  
5" Locking Plier-Curved Jaws With Wire Cutter  
Cold Chisel 5/16", 1/2", 5/8", 3/4", 7/8"  
Centre Punch 1/8", 5/32", 1/4"  
Solid Punch 1/8", 3/16", 1/4"  
Drift Punch 3/16", 1/4"  
Pin Punch 1/8", 3/16", 1/4"  
Nut Driver SAE:3/16", 1/4", 5/16", 11/32", 3/8", 7/16", 1/2"  
Nut Driver Metric: 5, 6, 7, 8, 9, 10, 11 mm  
Phillips® Screwdrivers: #0, 1, 2, 3  
Phillips® Stubby Screwdrivers: #2  
Slotted Screwdrivers: 5/32", 3/16", 1/4", 5/16", 3/8"  
Slotted Stubby Screwdrivers: 1/4"  
Square Recess Screwdrivers: #0,1,2,3  
Square Recess Stubby Screwdrivers: #1,2  
Offset Phillips® Screwdrivers: #1,2  
Offset Slotted Screwdrivers: 3/16", 1/4"  
Offset Square Recess Screwdrivers: #1, 2  
Circuit Tester 110V  
Magnetic Bit Holder  
Tampor Torx® Bits: T10, T15, T20, T25, T27, T30, T40  
Hex Bits: 2, 2.5, 3, 4, 5, 6, 8  
Phillips® Precision Screwdrivers: PH000, PH00, PH0  
Slotted Precision Screwdrivers: 3/64", 5/64", 3/32", 1/8"  
Adjustable Wrench: 8", 10"  
Combination Wrenches SAE: 3/8", 7/16", 1/2", 9/16", 5/8",  
11/16", 3/4", 13/16", 7/8", 15/16", 1", 1-1/16", 1-1/8", 1-1/4"  
Combination Wrenches Metric: 6, 7, 8, 9, 10, 11, 12, 13, 14,  
15, 16, 17, 18, 19, 20, 21, 22, 23, 24 mm  
Reversible Ratcheting Wrenches SAE: 5/16", 3/8", 7/16",  
1/2", 9/16", 5/8", 11/16", 3/4"  
Reversible Ratcheting Wrenches Metric: 8, 9, 10, 11, 12, 13,  
14, 15, 16, 17, 18, 19 mm

# Master Sets

## 198 Piece Starter Master Set

D096003

1/4" Drive Extension 2"  
1/4" Drive Extension 4"  
1/4" Drive Extension 6"  
1/4" Drive Spinner Handle  
1/4" Drive 45 Tooth Ratchet- Chrome Handle  
1/4" Drive Swivel Head Ratchet  
1/4" Drive Stubby Ratchet - 48 Teeth  
1/4" Drive Sliding T-Handle  
1/4" Drive Universal Joint  
1/4" Drive Flex Handle  
1/4" Drive Chrome Sockets-Metric, 6 Point, Regular Length:  
4, 5, 5.5, 6, 7, 8, 9, 10, 11, 12, 13, 14, 15 mm  
1/4" Drive Chrome Sockets-SAE, 6 Point, Regular Length:  
5/32", 3/16", 7/32", 1/4", 9/32", 5/16", 11/32", 3/8", 7/16",  
1/2", 9/16"  
3/8" Drive Extension 3"  
3/8" Drive Extension 6"  
3/8" Drive Extension 10"  
3/8" Drive 45 Tooth Ratchet Chrome Handle  
3/8" Drive Stubby Ratchet - 48 Teeth  
3/8" Sliding T-Handle  
3/8" Flex Handle  
3/8" Drive Chrome Sockets-Metric, 6 Point, Regular Length:  
6, 7, 8, 9, 10, 11, 12, 13, 14, 15, 16, 17, 18, 19 mm  
3/8" Drive Chrome Sockets-SAE, 6 Point, Regular Length:  
1/4", 5/16", 3/8", 7/16", 1/2", 9/16", 5/8", 11/16", 3/4", 13/16",  
7/8", 15/16", 1"  
1/2" Drive Extension 5"  
1/2" Drive Extension 10"  
1/2" Drive T-Handle Head  
1/2" Drive 45 Tooth Ratchet Chrome Handle  
1/2" Drive Chrome Sockets-Metric, 6 Point, Regular Length:  
10, 11, 12, 13, 14, 15, 16, 17, 18, 19, 20, 21, 22, 23, 24, 25, 26,  
27, 28 mm  
1/2" Drive Chrome Sockets-SAE, 6 Point, Regular Length:  
3/8", 7/16", 1/2", 9/16", 5/8", 11/16", 3/4", 13/16", 7/8",  
15/16", 1", 1 -1/16", 1-1/8", 1-3/16", 1-1/4", 1-5/16"  
1.5 lb Rubber Mallet-Hickory Handle  
16 oz Claw Hammer-Fiberglass Handle  
16 oz Ball Pein Hammer-Fiberglass Handle  
2 1/2 lb Club Hammer-Fiberglass Handle  
14 oz Soft Face Hammer  
Metric Hex-Keys-Regular Length: 0.7, 0.9, 1.3, 1.5, 2, 2.5, 3, 4,  
4.5, 5, 5.5, 6, 7, 8, 10 mm  
SAE Hex Keys-Long: 0.028", 0.035", 0.05", 1/16", 5/64", 3/32",  
7/64", 1/8", 9/64", 5/32", 3/16", 7/32", 1/4", 5/16", 3/8"  
8" Linesman Pliers Comfort Grip  
7" Diagonal Cutting Pliers Comfort Grip  
8" Long Nose Pliers Comfort Grip  
8" Bent Nose Pliers Comfort Grip  
8" Slip Joint Pliers Comfort Grip  
Cold Chisels: 1/2", 5/8", 3/4"  
Centre Punch: 5/32"  
Solid Punch: 3/16"  
Pin Punch 1/8", 3/16", 1/4"  
Phillips® Screwdrivers: #1, 2  
Slotted Screwdrivers: 1/8", 5/32", 1/4", 5/16", 3/8"  
Square Recess Screwdrivers: #1, 2  
8" Adjustable Wrench  
Combination Wrenches SAE: 3/8", 7/16", 1/2", 9/16", 5/8",  
11/16", 3/4", 13/16", 7/8", 15/16", 1", 1-1/16", 1-1/8", 1-1/4"  
Combination Wrenches Metric: 6, 7, 8, 9, 10, 11, 12, 13, 14,  
15, 16, 17, 18, 19, 20, 21, 22, 23, 24 mm

# Master Sets With Foam Organizers

**Work more efficiently by keeping your tools organized.**

- Find the tool you need fast
- Identify missing tools
- Keep tools from rolling and sliding inside drawer
- Protect your tools from damage



## **370 Piece Advanced Master Set with Foam Organizers**

**Part No. D096001-FO**

Set includes:

369 tools

D069203 42" Roller Cabinet With 12 Drawers

D096001-FT 9 Piece Foam Tray Organizer System

For complete set content see page 10

## **125 Piece Auto Mechanic Master Set with Foam Organizers**

**Part No. D096004-FO**

Set includes:

124 tools

D069201 28" Roller Cabinet With 7 Drawers

D096004-FT 5 Piece Foam Tray Organizer System

For complete set content see page 11



# Master Sets With Foam Organizers

## 370 Piece Advanced Master Set Bundle

D096001-FO

42" Roller Cabinet, 12 Drawers, Ball Bearing Slides  
1/4" Drive Extension 2"  
1/4" Drive Extension 4"  
1/4" Drive Extension 6"  
1/4" Drive Spinner Handle  
1/4" Drive 45 Tooth Ratchet- Chrome Handle  
1/4" Drive Swivel Head Ratchet  
1/4" Drive Stubby Ratchet - 48 Teeth  
1/4" Drive Sliding T-Handle  
1/4" Drive Universal Joint  
1/4" Drive Flex Handle  
1/4" Drive Chrome Sockets-Metric, 6 Point, Regular Length: 4, 5, 5.5, 6, 7, 8, 9, 10, 11, 12, 13, 14, 15 mm  
1/4" Drive Chrome Sockets-Metric, 6 Point, Deep: 4, 5, 5.5, 6, 7, 8, 9, 10, 11, 12, 13, 14 mm  
1/4" Drive Chrome Sockets-SAE, 6 Point, Regular Length: 5/32", 3/16", 7/32", 1/4", 9/32", 5/16", 11/32", 3/8", 7/16", 1/2", 9/16"  
1/4" Drive Chrome Sockets-SAE, 6 Point, Deep: 3/16", 7/32", 1/4", 9/32", 5/16", 11/32", 3/8", 7/16", 1/2", 9/16"  
3/8" Drive Extension 3"  
3/8" Drive Extension 6"  
3/8" Drive Extension 10"  
3/8" Drive 45 Tooth Ratchet Chrome Handle  
3/8" Drive Stubby Ratchet - 48 Teeth  
3/8" Sliding T-Handle  
3/8" Flex Handle  
3/8" Drive Chrome Sockets-Metric, 6 Point, Regular Length: 6, 7, 8, 9, 10, 11, 12, 13, 14, 15, 16, 17, 18, 19 mm  
3/8" Drive Chrome Sockets-Metric, 6 Point, Deep: 6, 7, 8, 9, 10, 11, 12, 13, 14, 15, 16, 17, 18, 19 mm  
3/8" Drive Chrome Sockets-SAE, 6 Point, Regular Length: 1/4", 5/16", 3/8", 7/16", 1/2", 9/16", 5/8", 11/16", 3/4", 13/16", 7/8", 15/16", 1"  
3/8" Drive Chrome Sockets-SAE, 6 Point, Deep: 1/4", 5/16", 3/8", 7/16", 1/2", 9/16", 5/8", 11/16", 3/4", 13/16", 7/8", 15/16", 1"  
1/2" Drive Extension 5"  
1/2" Drive Extension 10"  
1/2" Drive T-Handle Head  
1/2" Drive 45 Tooth Ratchet Chrome Handle  
1/2" Drive Chrome Sockets-Metric, 6 Point, Regular Length: 10, 11, 12, 13, 14, 15, 16, 17, 18, 19, 20, 21, 22, 23, 24, 25, 26, 27, 28 mm  
1/2" Drive Chrome Sockets-Metric, 6 Point, Deep: 10, 11, 12, 13, 14, 15, 16, 17, 18, 19, 20, 21, 22, 23, 24, 25, 26, 27, 28 mm  
1/2" Drive Chrome Sockets-SAE, 6 Point, Regular Length: 3/8", 7/16", 1/2", 9/16", 5/8", 11/16", 3/4", 13/16", 7/8", 15/16", 1", 1-1/16", 1-1/8", 1-3/16", 1-1/4", 1-5/16"  
1/2" Drive Chrome Sockets-SAE, 6 Point, Deep: 3/8", 7/16", 1/2", 9/16", 5/8", 11/16", 3/4", 13/16", 7/8", 15/16", 1", 1-1/16", 1-1/8", 1-3/16", 1-1/4", 1-5/16"  
1.5 lb Rubber Mallet-Hickory Handle

16 oz Claw Hammer-Fiberglass Handle  
16 oz Ball Pein Hammer-Fiberglass Handle  
2 1/2 lb Club Hammer-Fiberglass Handle  
14 oz Soft Face Hammer  
Metric Hex-Keys-Regular Length: 0.7, 0.9, 1.3, 1.5, 2, 2.5, 3, 4, 4.5, 5, 5.5, 6, 7, 8, 10 mm  
SAE Hex Keys-Long: 0.028", 0.035", 0.05", 1/16", 5/64", 3/32", 7/64", 1/8", 9/64", 5/32", 3/16", 7/32", 1/4", 5/16", 3/8"  
8" Linesman Pliers Comfort Grip  
7" Diagonal Cutting Pliers Comfort Grip  
8" Long Nose Pliers Comfort Grip  
8" Bent Nose Pliers Comfort Grip  
8" Slip Joint Pliers Comfort Grip  
Aviation Snip-Right Hand  
Aviation Snip-Straight  
Aviation Snip-Left Hand  
10" Locking Plier Straight Jaws  
10" Locking Plier Curved Jaws  
7" Locking Plier-Curved Jaws With Wire Cutter  
6" Locking Pliers-Long Nose  
5" Locking Plier-Curved Jaws With Wire Cutter  
Cold Chisel 5/16", 1/2", 5/8", 3/4", 7/8"  
Centre Punch 1/8", 5/32", 1/4"  
Solid Punch 1/8", 3/16", 1/4"  
Drift Punch 3/16", 1/4"  
Pin Punch 1/8", 3/16", 1/4"  
Nut Driver SAE: 3/16", 1/4", 5/16", 11/32", 3/8", 7/16", 1/2"  
Nut Driver Metric: 5, 6, 7, 8, 9, 10, 11 mm  
Phillips® Screwdrivers: #0, 1, 2, 3  
Phillips® Stubby Screwdrivers: #2  
Slotted Screwdrivers: 5/32", 3/16", 1/4", 5/16", 3/8"  
Slotted Stubby Screwdrivers: 1/4"  
Square Recess Screwdrivers: #0, 1, 2, 3  
Square Recess Stubby Screwdrivers: #1, 2  
Offset Phillips® Screwdrivers: #1, 2  
Offset Slotted Screwdrivers: 3/16", 1/4"  
Offset Square Recess Screwdrivers: #1, 2  
Circuit Tester 110V  
Magnetic Bit Holder  
Tamper Torx® Bits: T10, T15, T20, T25, T27, T30, T40  
Hex Bits: 2, 2.5, 3, 4, 5, 6, 8  
Phillips® Precision Screwdrivers: PH000, PH00, PH0  
Slotted Precision Screwdrivers: 3/64", 5/64", 3/32", 1/8"  
Adjustable Wrench: 8", 10"  
Combination Wrenches SAE: 1/4", 5/16", 3/8", 7/16", 1/2", 9/16", 5/8", 11/16", 3/4", 13/16", 7/8", 15/16", 1", 1-1/16", 1-1/8", 1-1/4"  
Combination Wrenches Metric: 6, 7, 8, 9, 10, 11, 12, 13, 14, 15, 16, 17, 18, 19, 20, 21, 22, 23, 24 mm  
Reversible Ratcheting Wrenches SAE: 5/16", 3/8", 7/16", 1/2", 9/16", 5/8", 11/16", 3/4"  
Reversible Ratcheting Wrenches Metric: 8, 9, 10, 11, 12, 13, 14, 15, 16, 17, 18, 19 mm

# Master Sets With Foam Organizers

## 125 Piece Auto Mechanic Master Set Bundle

D096004-FO

28" Roller Cabinet, 7 Drawers, Ball Bearing Slides

1/4" Drive Chrome Sockets-*SAE*, 6 Point, Regular Length:  
5/32", 3/16", 7/32", 1/4", 9/32", 5/16", 11/32", 3/8", 7/16", 1/2",  
9/16"

3/8" Drive Chrome Sockets-*SAE*, 6 Point, Regular Length:  
1/4", 5/16", 3/8", 7/16", 1/2", 9/16", 5/8", 11/16", 3/4", 13/16", 7/8",  
15/16", 1"

1/4" Drive Chrome Sockets-*Metric*, 6 Point, Regular Length:  
4, 5, 5.5, 6, 7, 8, 9, 10, 11, 12, 13, 14, 15

3/8" Drive Chrome Sockets-*Metric*, 6 Point, Regular Length:  
6, 7, 8, 9, 10, 11, 12, 13, 14, 15, 16, 17, 18, 19

1/4" Drive Chrome Ratchet

1/4" Drive Extension 2"

1/4" Drive Extension 6"

3/8" Drive Chrome Ratchet

3/8" Drive Extension 3"

3/8" Drive Extension 6"

3/8" Drive Torque Wrench

1/4" Drive Swivel Head Ratchet

1/4" Drive Stubby Ratchet

1/4" Universal Joint

3/8" Drive Stubby Ratchet

3/8" Flex Head Ratchet

3/8" Universal Joint

Combination Wrenches *SAE*: 1/4", 5/16", 3/8", 7/16", 1/2",  
9/16", 5/8", 11/16", 3/4", 13/16", 7/8", 15/16"

Combination Wrenches *Metric*: 9, 10, 11, 12, 13, 14, 15, 16,  
17, 18, 19 mm

Slotted Stubby Screwdrivers: 1/4"

Slotted Screwdrivers: 3/16", 1/4", 3/8"

Phillips® Stubby Screwdrivers: #1, #2

Phillips® Screwdrivers: #1, #2, #3

Pin Punch: 1/16", 3/32", 1/8", 5/32", 3/16", 1/4", 5/16"

Centre Punch: 1/4"

Cold Chisel: 5/16", 1/2", 5/8", 3/4", 7/8"

Hex Keys *Metric*: 1.5, 2, 2.5, 3, 4, 5, 6 mm

Hex Keys *SAE*: 5/64", 3/32", 7/64", 1/8", 9/64", 5/32", 3/16", 7/32",  
1/4"

10" Locking Plier Curved Jaw

10" Locking Plier Straight Jaw

11" Locking Clamp

9" Welding Clamp

9" Locking Plier Long Nose

8" Linesman Pliers Comfort Grip

6" Long Nose Pliers

7" Diagonal Cutting Pliers

9-1/2" Groove Joint Pliers

Ball Pein Hammer: 16 oz, 32 oz

2 lb Dead Blow Hammer

12" Hacksaw

# Tool Storage



## Smooth Operation

All toolboxes feature ball bearing slides for smooth drawer opening and closing.

## Attractive Design

Bold colour scheme and easy to clean powder coat finish.

## Professional Grade

Heavy duty steel construction.

## Easy Maneuvering

Needle bearing casters with 360° brakes.

## Superior Tool Protection

Tubular lock and key for maximum safety.



## 28" Roller Cabinet - 7 Drawers

### Part No. D069201

2 Swivel/2 Fixed 5" x 2" casters  
 Capacity 8,881 cubic in.  
 Net Weight 129 lbs.  
 Shipping Weight 137 lbs.  
 D069570 Lock & key included  
 D069505 Drawer liner kit included  
 D069605 Top mat included  
 D069500 Ball bearing slides (pair) - small drawer  
 D069501 Ball bearing slides (pair) - big drawer

	Width (inches)	Depth (inches)	Height (inches)
<b>Overall w/ Casters</b>	<b>28.00</b>	<b>18.00</b>	<b>40.00</b>
<b>5 Drawers</b>	<b>22.25</b>	<b>15.50</b>	<b>2.75</b>
<b>2 Drawers</b>	<b>22.25</b>	<b>15.50</b>	<b>6.00</b>

## 28" Roller Cabinet - 10 Drawers

### Part No. D069206

2 Swivel/2 Fixed 5" x 2" casters  
 Capacity 10,845 cu in.  
 Net Weight 163 lbs.  
 Shipping Weight 171 lbs.  
 D069570 Lock & key included  
 D069580 Drawer liner kit included  
 D069605 Top mat included  
 D069500 Ball bearing slides (pair) - small drawer  
 D069501 Ball bearing slides (pair) - big drawer

	Width (inches)	Depth (inches)	Height (inches)
<b>Overall w/ Casters</b>	<b>28.00</b>	<b>18.00</b>	<b>43.25</b>
<b>4 Drawers</b>	<b>10.75</b>	<b>15.50</b>	<b>2.75</b>
<b>4 Drawers</b>	<b>22.25</b>	<b>15.50</b>	<b>2.75</b>
<b>2 Drawers</b>	<b>22.25</b>	<b>15.50</b>	<b>6.00</b>



## 42" Roller Cabinet - 12 Drawers

### Part No. D069203

2 Swivel/2 Fixed 5" x 2" casters  
 Capacity 13,378 cubic in.  
 Net Weight 220 lbs.  
 Shipping Weight 231 lbs.  
 D069572 Lock & key included  
 D069507 Drawer liner kit included  
 D069601 Top mat included  
 D069501 Ball bearing slides (pair)

	Width (inches)	Depth (inches)	Height (inches)
<b>Overall w/ Casters</b>	<b>42.00</b>	<b>18.00</b>	<b>41.00</b>
<b>1 Drawer</b>	<b>36.50</b>	<b>15.50</b>	<b>5.25</b>
<b>5 Drawers</b>	<b>22.25</b>	<b>15.50</b>	<b>2.75</b>
<b>4 Drawers</b>	<b>10.75</b>	<b>15.50</b>	<b>2.75</b>
<b>1 Drawer</b>	<b>22.25</b>	<b>15.50</b>	<b>6.00</b>
<b>1 Drawer</b>	<b>10.75</b>	<b>15.50</b>	<b>8.75</b>

# Tool Storage



## 36" Roller Cabinet - 8 Drawers

**Part No. D069207**

- 2 Swivel/2 Fixed 5" x 2" casters
- Capacity 9,821 cu in.
- Net Weight 195 lbs.
- Shipping Weight 203 lbs.
- D069570 Lock & key included
- D069581 Drawer liner kit included
- D069606 Top mat included
- D069500 Ball bearing slides (pair) - small drawer
- D069501 Ball bearing slides (pair) - big drawer

Accessories not included

	Width (inches)	Depth (inches)	Height (inches)
<b>Overall w/ Casters</b>	<b>36.00</b>	<b>18.00</b>	<b>39.33</b>
<b>2 Drawers</b>	<b>10.72</b>	<b>15.92</b>	<b>3.00</b>
<b>4 Drawers</b>	<b>22.72</b>	<b>15.92</b>	<b>3.00</b>
<b>2 Drawers</b>	<b>22.72</b>	<b>15.92</b>	<b>6.16</b>



## 16" Side Rider - 6 Drawers

**Part No. D069205**

- Capacity: 4,170 cubic in.
  - Net Weight: 77 lbs.
  - Shipping Weight: 84 lbs.
  - D069574 Lock & key included
  - D069509 Drawer liner kit included
  - D069602 Top mat included
  - D069500 Ball bearing slides (pair)
- \* Can be installed on the right or left.

	Width (inches)	Depth (inches)	Height (inches)
<b>Overall</b>	<b>18.00</b>	<b>18.00</b>	<b>33.75</b>
<b>3 Drawers</b>	<b>10.25</b>	<b>15.50</b>	<b>2.75</b>
<b>3 Drawers</b>	<b>10.25</b>	<b>15.50</b>	<b>6.00</b>







## 28" Top Chest - 8 Drawers

**Part No. D069202**

Capacity: 5,876 cubic in.  
 Net Weight: 99 lbs.  
 Shipping Weight: 105 lbs.  
 D069571 Lock & key included  
 D069506 Drawer liner kit included  
 D069500 Ball bearing slides (pair)

	Width (inches)	Depth (inches)	Height (inches)
<b>Overall</b>	<b>28.00</b>	<b>18.00</b>	<b>20.00</b>
<b>3 Drawers</b>	<b>6.50</b>	<b>15.50</b>	<b>2.00</b>
<b>4 Drawers</b>	<b>22.25</b>	<b>15.50</b>	<b>2.00</b>
<b>1 Drawer</b>	<b>22.25</b>	<b>15.50</b>	<b>4.00</b>

## 28" Top Chest - 9 Drawers

**Part No. D069208**

Capacity: 4,942 cu in.  
 Net Weight: 103 lbs.  
 Shipping Weight: 108 lbs.  
 D069571 Lock & key included  
 D069582 Drawer liner kit included  
 D069500 Ball bearing slides (pair)

	Width (inches)	Depth (inches)	Height (inches)
<b>Overall</b>	<b>28.00</b>	<b>18.00</b>	<b>20.00</b>
<b>6 Drawers</b>	<b>10.75</b>	<b>15.50</b>	<b>2.00</b>
<b>2 Drawers</b>	<b>22.25</b>	<b>15.50</b>	<b>2.00</b>
<b>1 Drawer</b>	<b>22.25</b>	<b>15.50</b>	<b>4.00</b>



## 42" Top Chest - 8 Drawers

**Part No. D069204**

Capacity: 7,831 cubic in.  
 Net Weight: 129 lbs.  
 Shipping Weight: 139 lbs.  
 D069573 Lock & key included  
 D069508 Drawer liner kit included  
 D069501 Ball bearing slides (pair)

	Width (inches)	Depth (inches)	Height (inches)
<b>Overall</b>	<b>42.00</b>	<b>18.00</b>	<b>18.00</b>
<b>4 Drawers</b>	<b>22.25</b>	<b>15.50</b>	<b>2.75</b>
<b>4 Drawers</b>	<b>10.75</b>	<b>15.50</b>	<b>2.75</b>



## 52" Industrial Cart - 12 Drawers

**Part No. D069209**

4 Swivel/2 Fixed 5" x 2" casters  
 Capacity: 19,612 cu in.  
 Net Weight: 378 lbs.  
 Shipping Weight: 392 lbs.  
 D069572 Lock & key included  
 D069583 Drawer liner kit included  
 D069607 PVC top mat included  
 D069501 Ball bearing slides (pair)

	Width (inches)	Depth (inches)	Height (inches)
<b>Overall</b>	<b>52.50</b>	<b>31.64</b>	<b>40.25</b>
<b>7 Drawers</b>	<b>30.12</b>	<b>15.67</b>	<b>2.95</b>
<b>1 Drawer</b>	<b>30.12</b>	<b>15.67</b>	<b>6.06</b>
<b>3 Drawers</b>	<b>24.76</b>	<b>15.67</b>	<b>2.95</b>
<b>1 Drawer</b>	<b>24.76</b>	<b>15.67</b>	<b>9.17</b>



Reverse side shown

## 2 Tray Utility Cart

**Part No. D069101**

2 Swivel/2 Fixed 4" x 1" casters  
 Net Weight 36 lbs.  
 Shipping Weight 37.5 lbs.

	Width (inches)	Depth (inches)	Height (inches)
<b>Overall w/ Casters</b>	<b>30</b>	<b>16</b>	<b>36</b>

## Middle Tray for D069101 (Optional)

**Part No. D069103**

Converts D069101 into a 3 tray utility cart

	Width (inches)	Depth (inches)	Height (inches)
<b>Overall</b>	<b>30</b>	<b>16</b>	<b>3</b>





### 3 Drawer Utility Cart

**Part No. D069102**

2 Swivel/2 Fixed 4" x 1" casters  
 Net Weight 50 lbs.  
 Shipping Weight 52 lbs.  
 D069575 Lock & key included  
 D069651 Drawer liner kit included  
 D069603 Work top included  
 D069498 Ball bearing slides (pair)

	Width (inches)	Depth (inches)	Height (inches)
<b>Overall w/ Casters</b>	<b>27</b>	<b>18.5</b>	<b>36</b>
<b>3 Drawers</b>	<b>22.5</b>	<b>16</b>	<b>3</b>

### 3 Drawer Hand Box with Ball Bearing Slides

**Part No. D069001**

Capacity: 1,473 cubic in.  
 Net Weight: 28 lbs.  
 Shipping Weight: 30 lbs.  
 D069650 Drawer liner kit  
 D069499 Ball bearing slides (pair)

	Width (inches)	Depth (inches)	Height (inches)
<b>Overall</b>	<b>20.00</b>	<b>10.00</b>	<b>12.00</b>
<b>1 Drawer</b>	<b>19.50</b>	<b>9.50</b>	<b>3.00</b>
<b>3 Drawers</b>	<b>17.00</b>	<b>9.00</b>	<b>2.00</b>



### 20" Hip Roof Tool Box

**Part No. D069002**

Capacity: 998 cubic in.  
 Net Weight: 9 lbs.  
 Shipping Weight: 10 lbs.  
 Tote tray included

	Width (inches)	Depth (inches)	Height (inches)
<b>Overall</b>	<b>19</b>	<b>7</b>	<b>7.5</b>

# Sockets Sockets



## Complete Assortment

Sockets are available in chrome, impact, hex, slotted, Phillips® and Torx®.

## Large and Visible Markings

Laser etched markings improve size identification and provides SAE/Metric differentiation.

## User-Friendly Design

Chrome sockets feature a knurl for improved grip (3/8" and 1/2" drive only).

## Modern Finish

Electro-phosphate finish on impact sockets provides a cleaner and modern look.

## Professional Grade

All sockets meet ANSI standards.

## 11 Piece 6 Point Standard SAE Socket Set

Part No. D004000



**Set Content:**

11 Standard SAE Sockets: 5/32", 3/16", 7/32", 1/4", 9/32", 5/16", 11/32", 3/8", 7/16", 1/2", 9/16"  
Includes Rail.

## 10 Piece 6 Point Deep SAE Socket Set

Part No. D004001



**Set Content:**

10 Deep SAE Sockets: 3/16", 7/32", 1/4", 9/32", 5/16", 11/32", 3/8", 7/16", 1/2", 9/16"  
Includes Rail.



# Hand Sockets

## 10 Piece 12 Point Standard SAE Socket Set

Part No. D004007



**Set Content:**

**10 Standard SAE Sockets: 3/16", 7/32", 1/4", 9/32", 5/16", 11/32", 3/8", 7/16", 1/2", 9/16"**

**Includes Rail.**

## 13 Piece 6 Point Standard Metric Socket Set

Part No. D004002



**Set Content:**

**13 Standard Metric Sockets: 4, 5, 5.5, 6, 7, 8, 9, 10, 11, 12, 13, 14, 15mm**

**Includes Rail.**

## 12 Piece 6 Point Deep Metric Socket Set

Part No. D004003



**Set Content:**

12 Deep Metric Sockets: 4, 5, 5.5, 6, 7, 8, 9, 10, 11, 12, 13, 14mm  
Includes Rail.

## 9 Piece 12 Point Standard Metric Socket Set

Part No. D004008



**Set Content:**

9 Standard Metric Sockets: 4, 5, 6, 7, 8, 9, 10, 11, 12mm  
Includes Rail.



# Hand Sockets

## 8 Piece Standard Length Torx® Socket Set

Part No. D004009



**Set Content:**  
8 Torx® Sockets: T8, T9, T10, T15, T20, T25, T27, T30  
Includes Rail.

## 28 Piece 6 Point Standard SAE/Metric Socket Set

Part No. D004004



**Set Content:**  
10 Standard SAE Sockets: 3/16", 7/32", 1/4", 9/32", 5/16", 11/32", 3/8", 7/16", 1/2", 9/16"  
13 Standard Metric Sockets: 4, 5, 5.5, 6, 7, 8, 9, 10, 11, 12, 13, 14, 15mm  
2" Extension, 6" Extension, Hand Driver, Universal Joint, 45 Tooth Chrome Ratchet

Includes Metal Case.



# Hand Socket Attachments

## 25 Piece 6 Point Standard/Deep SAE Socket Set

Part No. D004005



**Set Content:**

- 10 Standard SAE Sockets: 3/16", 7/32", 1/4", 9/32", 5/16", 11/32", 3/8", 7/16", 1/2", 9/16"
- 10 Deep SAE Sockets: 3/16", 7/32", 1/4", 9/32", 5/16", 11/32", 3/8", 7/16", 1/2", 9/16"
- 2" Extension, 6" Extension, Hand Driver, Universal Joint, 45 Tooth Chrome Ratchet

Includes Metal Case.

## 47 Piece 6 Point Standard/Deep SAE/Metric Socket Set

Part No. D004006



**Set Content:**

- 10 Standard SAE Sockets: 3/16", 7/32", 1/4", 9/32", 5/16", 11/32", 3/8", 7/16", 1/2", 9/16"
- 10 Deep SAE Sockets: 3/16", 7/32", 1/4", 9/32", 5/16", 11/32", 3/8", 7/16", 1/2", 9/16"
- 12 Standard Metric Sockets: 4, 5, 5.5, 6, 7, 8, 9, 10, 11, 12, 13, 14mm
- 10 Deep Metric Sockets: 4, 5, 5.5, 6, 7, 8, 9, 10, 11, 12mm
- 2" Extension, 6" Extension, Hand Driver, Universal Joint, 45 Tooth Chrome Ratchet

Includes Blow Mold Case.

## Quick Release Ratchet-Chrome Handle

Part No.	Length (inches)	Weight (lbs)	No. of Teeth
D001301	5.00	0.32	45



## Quick Release Ratchet-Comfort Handle

Part No.	Length (inches)	Weight (lbs)	No. of Teeth
D001302	5.00	0.32	72



## Swivel Head Ratchet-Comfort Handle

Part No.	Length (inches)	Weight (lbs)	No. of Teeth
D001306	6.00	0.30	72



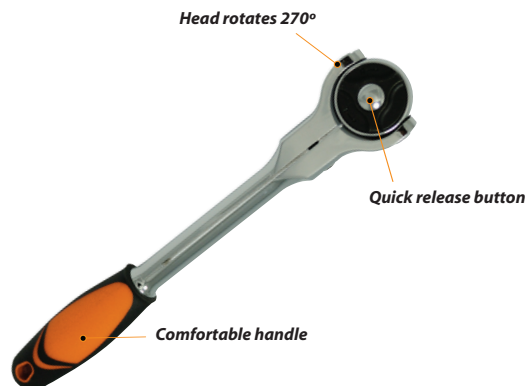
## Stubby Ratchet

Part No.	Length (inches)	Weight (lbs)	No. of Teeth
D001307	3.50	0.17	48



## Dynamic Swivel Head Ratchets

Accessibility and Convenience that Make Your Job Easier



# Hand Socket Attachments



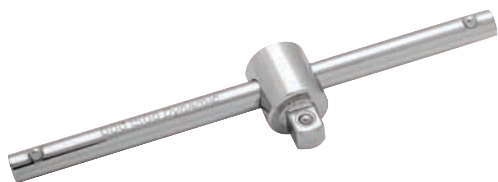
## Flex Handle

Part No.	Length (inches)	Weight (lbs)
D001800	6.00	0.25



## Chrome Extension

Part No.	Length (inches)	Weight (lbs)
D001002	2.00	0.05
D001004	4.00	0.10
D001006	6.00	0.15



## Sliding T-Handle

Part No.	Length (inches)	Weight (lbs)
D001500	4.49	0.09



## Universal Joint

Part No.	Length (inches)	Weight (lbs)
D001601	1.46	0.05



## Bit Holder

Part No.	Length (inches)	Hex (inches)	Male (inches)	Weight (lbs)
D001201	1.00	1/4	1/4	0.03



## Hand Driver

Part No.	Length (inches)	Weight (lbs)
D001101	6.00	0.23

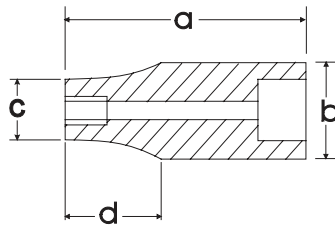


# Hand Sockets

## SAE Standard Chrome Sockets

Size			Overall Length (a) inches	Drive End (b) inches	Hex End (c) inches	Taper Length (d) inches	Net Weight (lbs)
	Part No.	Part No.					
5/32"	D003303		0.98	0.46	0.27	0.45	0.02
3/16"	D003304	D003404	0.98	0.46	0.31	0.45	0.02
7/32"	D003306	D003406	0.98	0.46	0.33	0.45	0.02
1/4"	D003308	D003408	0.98	0.46	0.37	0.45	0.03
9/32"	D003309	D003409	0.98	0.46	0.42	0.45	0.03
5/16"	D003310	D003410	0.98	0.46	0.46	0.00	0.03
11/32"	D003311	D003411	0.98	0.50	0.50	0.00	0.03
3/8"	D003312	D003412	0.98	0.54	0.54	0.00	0.03
7/16"	D003314	D003414	0.98	0.62	0.62	0.00	0.05
1/2"	D003316	D003416	0.98	0.70	0.70	0.00	0.07
9/16"	D003318	D003418	0.98	0.78	0.78	0.00	0.08

\* Meets A.N.S.I. standards



## SAE Deep Chrome Sockets

Size			Overall Length (a) inches	Drive End Width (b) inches	Hex End Length (c) inches	Taper Length (d) inches	Net Weight (lbs)
	Part No.	Part No.					
3/16"	D003504		1.97	0.46	0.31	1.10	0.04
7/32"	D003506		1.97	0.46	0.33	1.10	0.04
1/4"	D003508		1.97	0.46	0.37	1.10	0.04
9/32"	D003509		1.97	0.46	0.42	1.10	0.05
5/16"	D003510		1.97	0.46	0.46	0.00	0.06
11/32"	D003511		1.97	0.51	0.51	0.00	0.06
3/8"	D003512		1.97	0.57	0.57	0.00	0.07
7/16"	D003514		1.97	0.62	0.62	0.00	0.09
1/2"	D003516		1.97	0.70	0.70	0.00	0.09
9/16"	D003518		1.97	0.78	0.78	0.00	0.11

\* Meets A.N.S.I. standards



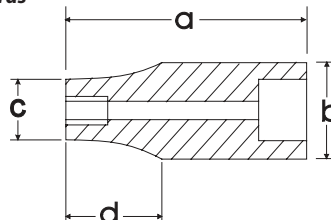
# Hand Sockets



## Metric Standard Chrome Sockets

Size	6mm Part No.	12mm Part No.	Overall Length (a) inches	Drive End (b) inches	Hex End (c) inches	Taper Length (d) inches	Net Weight (lbs)
4 mm	D003004	D003104	0.98	0.46	0.27	0.45	0.02
4.5 mm	D003045		0.98	0.46	0.29	0.45	0.02
5 mm	D003005	D003105	0.98	0.46	0.31	0.45	0.02
5.5 mm	D003055		0.98	0.46	0.34	0.45	0.02
6 mm	D003006	D003106	0.98	0.46	0.37	0.45	0.02
7 mm	D003007	D003107	0.98	0.46	0.43	0.45	0.03
8 mm	D003008	D003108	0.98	0.46	0.46	0.00	0.03
9 mm	D003009	D003109	0.98	0.50	0.50	0.00	0.03
10 mm	D003010	D003110	0.98	0.54	0.54	0.00	0.03
11 mm	D003011	D003111	0.98	0.62	0.62	0.00	0.04
12 mm	D003012	D003112	0.98	0.66	0.66	0.00	0.05
13 mm	D003013		0.98	0.70	0.70	0.00	0.05
14 mm	D003014		0.98	0.78	0.78	0.00	0.08
15 mm	D003015		0.98	0.82	0.82	0.00	0.10

\* Meets A.N.S.I. standards



## Metric Deep Chrome Sockets

Size	6mm Part No.	Overall Length (a) inches	Drive End Width (b) inches	Hex End Length (c) inches	Taper Length (d) inches	Net Weight (lbs)
4 mm	D003204	1.97	0.46	0.27	1.10	0.03
5 mm	D003205	1.97	0.46	0.31	1.10	0.04
5.5 mm	D003255	1.97	0.46	0.34	1.10	0.04
6 mm	D003206	1.97	0.46	0.37	1.10	0.04
7 mm	D003207	1.97	0.46	0.43	1.10	0.05
8 mm	D003208	1.97	0.46	0.46	0.00	0.06
9 mm	D003209	1.97	0.51	0.51	0.00	0.06
10 mm	D003210	1.97	0.57	0.57	0.00	0.07
11 mm	D003211	1.97	0.62	0.62	0.00	0.09
12 mm	D003212	1.97	0.66	0.66	0.00	0.09
13 mm	D003213	1.97	0.70	0.70	0.00	0.11
14 mm	D003214	1.97	0.78	0.78	0.00	0.12

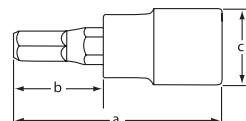
\* Meets A.N.S.I. standards



## Torx® Head Sockets-Standard Length

Size	Part No.	Overall Length (a) inches	Bit Length (b) inches	Drive End Width (c) inches	Net Weight (lbs)
T8	D002308	1.46	0.71	0.46	0.03
T9	D002309	1.46	0.71	0.46	0.03
T10	D002310	1.46	0.71	0.46	0.03
T15	D002315	1.46	0.71	0.46	0.03
T20	D002320	1.46	0.71	0.46	0.03
T25	D002325	1.46	0.71	0.46	0.03
T27	D002327	1.46	0.71	0.46	0.03
T30	D002330	1.46	0.71	0.46	0.03

\* Meets A.N.S.I. standards





# Hand Sockets

## 13 Piece 6 Point Standard SAE Socket Set

Part No. D010000



**Set Content:**

13 Standard SAE Sockets: 1/4", 5/16", 3/8", 7/16", 1/2", 9/16", 5/8", 11/16", 3/4", 13/16", 7/8", 15/16", 1"  
Includes Rail.

## 13 Piece 6 Point Deep SAE Socket Set

Part No. D010001



**Set Content:**

13 Standard SAE Sockets: 1/4", 5/16", 3/8", 7/16", 1/2", 9/16", 5/8", 11/16", 3/4", 13/16", 7/8", 15/16", 1"  
Includes Rail.

## 13 Piece 12 Point Standard SAE Socket Set

Part No. D010002



**Set Content:**

13 Standard SAE Sockets: 1/4", 5/16", 3/8", 7/16", 1/2", 9/16", 5/8", 11/16", 3/4", 13/16", 7/8", 15/16", 1"  
Includes Rail.

## 13 Piece 12 Point Deep SAE Socket Set

Part No. D010003



**Set Content:**

13 Standard SAE Sockets: 1/4", 5/16", 3/8", 7/16", 1/2", 9/16", 5/8", 11/16", 3/4", 13/16", 7/8", 15/16", 1"  
Includes Rail.



# Hand Sockets

## 14 Piece 6 Point Standard Metric Socket Set

Part No. D010004



**Set Content:**

14 Standard Metric Sockets: 6, 7, 8, 9, 10, 11, 12, 13, 14, 15, 16, 17, 18, 19mm

Includes Rail.

---

## 14 Piece 6 Point Deep Metric Socket Set

Part No. D010005



**Set Content:**

14 Deep Metric Sockets: 6, 7, 8, 9, 10, 11, 12, 13, 14, 15, 16, 17, 18, 19mm

Includes Rail.

---



## 14 Piece 12 Point Standard Metric Socket Set

Part No. D010006



**Set Content:**

14 Standard Metric Sockets: 6, 7, 8, 9, 10, 11, 12, 13, 14, 15, 16, 17, 18, 19mm  
Includes Rail.

## 14 Piece 12 Point Deep Metric Socket Set

Part No. D010007



**Set Content:**

14 Deep Metric Sockets: 6, 7, 8, 9, 10, 11, 12, 13, 14, 15, 16, 17, 18, 19mm  
Includes Rail.



# Hand Sockets

## 7 Piece Standard Length SAE Hex Socket Set

Part No. D010014



**Set Content:**

**7 SAE Hex Sockets: 1/8", 5/32", 3/16", 7/32", 1/4", 5/16", 3/8"**  
**Includes Rail.**

## 7 Piece Long SAE Hex Socket Set

Part No. D010015



**Set Content:**

**7 Long SAE Hex Sockets: 1/8", 5/32", 3/16", 7/32", 1/4", 5/16", 3/8"**  
**Includes Rail.**

## 7 Piece Long SAE Ball Nose Hex Socket Set

Part No. D010024



**Set Content:**

7 SAE Long Ball Nose Hex Sockets: 1/8\", 5/32\", 3/16\", 7/32\", 1/4\", 5/16\", 3/8\"  
Includes Rail.

## 7 Piece Standard Length Metric Hex Socket Set

Part No. D010016



**Set Content:**

7 Metric Hex Sockets: 4, 5, 6, 7, 8, 9, 10mm  
Includes Rail.



# Hand Sockets

## 7 Piece Long Metric Hex Socket Set

Part No. D010017



**Set Content:**  
7 Long Metric Hex Sockets: 4, 5, 6, 7, 8, 9, 10mm  
Includes Rail.

---

## 7 Piece Long Metric Ball Nose Hex Socket Set

Part No. D010025



**Set Content:**  
7 Metric Long Ball Nose Hex Sockets: 4, 5, 6, 7, 8, 9, 10mm  
Includes Rail.

---

## 9 Piece Standard Length Torx® Socket Set

Part No. D010018



**Set Content:**

9 Torx® Sockets: T15, T20, T25, T27, T30, T40, T45, T50, T55

Includes Rail.

## 9 Piece Long Torx® Socket Set

Part No. D010019



**Set Content:**

9 Long Torx® Sockets: T15, T20, T25, T27, T30, T40, T45, T50, T55

Includes Rail.



# Hand Sockets

## 7 Piece SAE Flex Head Crow Foot Socket Set

Part No. D010029



**Set Content:**

**7 SAE Flex Head Crow Foot Sockets: 3/8", 7/16", 1/2", 9/16", 5/8", 11/16", 3/4"**  
**Includes Rail.**

---

## 10 Piece Metric Flex Head Crow Foot Socket Set

Part No. D010028



**Set Content:**

**10 Metric Flex Head Crow Foot Sockets: 10, 11, 12, 13, 14, 15, 16, 17, 18, 19 mm**  
**Includes Rail.**

---

## 7 Piece 6 Point SAE U-Joint Socket Set

Part No. D010026



**Set Content:**

7 U-Joint Sockets: 3/8", 7/16", 1/2", 9/16", 5/8", 11/16", 3/4"

Includes Rail.

---

## 10 Piece 6 Point Metric U-Joint Socket Set

Part No. D010027



**Set Content:**

10 Metric U-Joint Sockets: 10, 11, 12, 13, 14, 15, 16, 17, 18, 19 mm

Includes Rail.

---



# Hand Sockets

## 16 Piece 6 Point Standard SAE Socket Set

Part No. D010008



**Set Content:**

11 Standard SAE Sockets: 3/8", 7/16", 1/2", 9/16", 5/8", 11/16", 3/4", 13/16", 7/8", 15/16", 1"  
3" Extension, 6" Extension, Universal Joint, 8" Flex Handle, 45 Tooth Chrome Ratchet

Includes Metal Case.

## 27 Piece 6 Point Standard/Deep SAE Socket Set

Part No. D010009



**Set Content:**

11 Standard SAE Sockets: 3/8", 7/16", 1/2", 9/16", 5/8", 11/16", 3/4", 13/16", 7/8", 15/16", 1"  
11 Deep SAE Sockets: 3/8", 7/16", 1/2", 9/16", 5/8", 11/16", 3/4", 13/16", 7/8", 15/16", 1"  
3" Extension, 6" Extension, Universal Joint, 8" Flex Handle, 45 Tooth Chrome Ratchet

Includes Metal Case.



## 20 Piece 6 Point Standard Metric Socket Set

Part No. D010010



**Set Content:**

15 Standard Metric Sockets: 6, 7, 8, 9, 10, 11, 12, 13, 14, 15, 16, 17, 18, 19, 20mm  
3" Extension, 6" Extension, Universal Joint, 8" Flex Handle, 45 Tooth Chrome Ratchet



Includes Metal Case.

## 35 Piece 6 Point Standard/Deep Metric Socket Set

Part No. D010011



**Set Content:**

15 Standard Metric Sockets: 6, 7, 8, 9, 10, 11, 12, 13, 14, 15, 16, 17, 18, 19, 20mm  
15 Deep Metric Sockets: 6, 7, 8, 9, 10, 11, 12, 13, 14, 15, 16, 17, 18, 19, 20mm  
3" Extension, 6" Extension, Universal Joint, 8" Flex Handle, 45 Tooth Chrome Ratchet



Includes Metal Case.



# Hand Sockets

## 60 Piece 6 Point Standard/Deep SAE/Metric Socket Set

Part No. D010012



**Set Content:**

- 13 Standard SAE Sockets: 1/4", 5/16", 3/8", 7/16", 1/2", 9/16", 5/8", 11/16", 3/4", 13/16", 7/8", 15/16", 1"
- 13 Deep SAE Sockets: 1/4", 5/16", 3/8", 7/16", 1/2", 9/16", 5/8", 11/16", 3/4", 13/16", 7/8", 15/16", 1"
- 14 Standard Metric Sockets: 6, 7, 8, 9, 10, 11, 12, 13, 14, 15, 16, 17, 18, 19mm
- 15 Deep Metric Sockets: 6, 7, 8, 9, 10, 11, 12, 13, 14, 15, 16, 17, 18, 19, 20mm
- 3" Extension, 6" Extension, Universal Joint, 8" Flex Handle, 45 Tooth Chrome Ratchet

Includes Blow Mold Case.

## 57 Piece 12 Point Standard/Deep SAE/Metric Socket Set

Part No. D010013



**Set Content:**

- 12 Standard SAE Sockets: 1/4", 5/16", 3/8", 7/16", 1/2", 9/16", 5/8", 11/16", 3/4", 7/8", 15/16", 1"
- 12 Deep SAE Sockets: 1/4", 5/16", 3/8", 7/16", 1/2", 9/16", 5/8", 11/16", 3/4", 7/8", 15/16", 1"
- 14 Standard Metric Sockets: 6, 7, 8, 9, 10, 11, 12, 13, 14, 15, 16, 17, 18, 19mm
- 14 Deep Metric Sockets: 6, 7, 8, 9, 10, 11, 12, 13, 14, 15, 16, 17, 18, 19mm
- 3" Extension, 6" Extension, Universal Joint, 8" Flex Handle, 45 Tooth Chrome Ratchet

Includes Blow Mold Case.

# Hand Socket Attachments

## Quick Release Ratchet-Chrome Handle

Part No.	Length (inches)	Weight (lbs)	No. of Teeth
D005301	7.60	1.46	45



## Quick Release Ratchet-Comfort Handle

Part No.	Length (inches)	Weight (lbs)	No. of Teeth
D005302	7.60	0.55	72



## Quick Release Ratchet-Comfort Handle

Part No.	Length (inches)	Weight (lbs)	No. of Teeth
D005306	9.00	0.85	72



## Stubby Ratchet

Part No.	Length (inches)	Weight (lbs)	No. of Teeth
D005307	4.75	0.44	48



## Flex Head Ratchet

Part No.	Length (inches)	Weight (lbs)	No. of Teeth
D005308	11.75	0.85	48



## Dynamic Swivel Head Ratchets

Accessibility and Convenience that Make Your Job Easier





# Hand Socket Attachments



## Flex Handle

Part No.	Length (inches)	Weight (lbs)
D005800	7.87	0.47



## Chrome Extension

Part No.	Length (inches)	Weight (lbs)
D005003	3.00	0.17
D005006	6.00	0.30
D005010	10.00	0.54



## Chrome Extension with Quick Release

Part No.	Length (inches)	Weight (lbs)
D005023	3.00	0.18
D005026	6.00	0.33
D005030	10.00	0.52



## Sliding T-Handle

Part No.	Length (inches)	Weight (lbs)
D005500	6.46	0.09



## Universal Joint

Part No.	Length (inches)	Weight (lbs)
D005601	1.81	0.13



## Adapter

Part No.	Length (inches)	Female (inches)	Male (inches)	Weight (lbs)
D005701	1.38	3/8	1/4	0.07
D005702	1.81	3/8	1/2	0.10



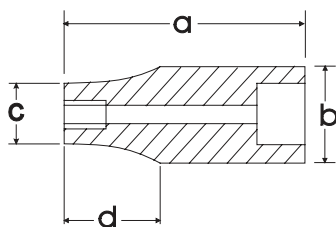
## Spark Plug Socket

Part No.	Size (inches)	Length (inches)	Weight (lbs)
D005401	5/8	2.48	0.21
D005402	13/16	2.48	0.28

## SAE Standard Chrome Sockets

Size			Overall Length (a) inches	Drive End (b) inches	Hex End (c) inches	Taper Length (d) inches	Net Weight (lbs)
	Part No.	Part No.					
1/4"	D008308	D009408	1.10	0.66	0.39	0.47	0.05
5/16"	D008310	D009410	1.10	0.66	0.47	0.47	0.05
3/8"	D008312	D009412	1.10	0.66	0.54	0.47	0.06
7/16"	D008314	D009414	1.10	0.66	0.63	0.47	0.06
1/2"	D008316	D009416	1.10	0.70	0.70	0.00	0.07
9/16"	D008318	D009418	1.10	0.78	0.78	0.00	0.08
5/8"	D008320	D009420	1.10	0.86	0.86	0.00	0.10
11/16"	D008322	D009422	1.18	0.94	0.94	0.00	0.10
3/4"	D008324	D009424	1.18	1.02	1.02	0.00	0.12
13/16"	D008326	D009426	1.18	1.09	1.09	0.00	0.16
7/8"	D008328	D009428	1.18	1.17	1.17	0.00	0.16
15/16"	D008330	D009430	1.18	1.25	1.25	0.00	0.19
1"	D008332	D009432	1.18	1.33	1.33	0.00	0.21

\* Meets A.N.S.I. standards



## SAE Deep Chrome Sockets

Size			Overall Length (a) inches	Drive End (b) inches	Hex End (c) inches	Taper Length (d) inches	Net Weight (lbs)
	Part No.	Part No.					
1/4"	D008508	D009608	2.48	0.66	0.39	1.50	0.09
5/16"	D008510	D009610	2.48	0.66	0.47	1.50	0.10
3/8"	D008512	D009612	2.48	0.66	0.54	1.50	0.11
7/16"	D008514	D009614	2.48	0.66	0.63	1.50	0.11
1/2"	D008516	D009616	2.48	0.74	0.74	0.00	0.11
9/16"	D008518	D009618	2.48	0.78	0.78	0.00	0.16
5/8"	D008520	D009620	2.48	0.86	0.86	0.00	0.19
11/16"	D008522	D009622	2.48	0.94	0.94	0.00	0.23
3/4"	D008524	D009624	2.48	1.02	1.02	0.00	0.27
13/16"	D008526	D009626	2.48	1.09	1.09	0.00	0.43
7/8"	D008528	D009628	2.48	1.17	1.17	0.00	0.49
15/16"	D008530	D009630	2.48	1.25	1.25	0.00	0.54
1"	D008532	D009632	2.48	1.33	1.33	0.00	0.57

\* Meets A.N.S.I. standards

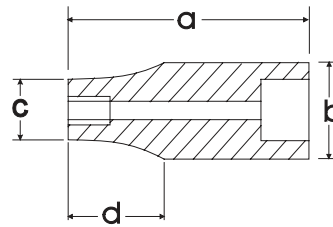




## Metric Standard Chrome Sockets

Size	6 POINT Part No.	12 POINT Part No.	Overall Length (a) inches	Drive End (b) inches	Hex End (c) inches	Taper Length (d) inches	Net Weight (lbs)
6 mm	D008006	D009106	1.10	0.66	0.39	0.47	0.05
7 mm	D008007	D009107	1.10	0.66	0.43	0.47	0.05
8 mm	D008008	D009108	1.10	0.66	0.47	0.47	0.05
9 mm	D008009	D009109	1.10	0.66	0.52	0.47	0.05
10 mm	D008010	D009110	1.10	0.66	0.58	0.47	0.05
11 mm	D008011	D009111	1.10	0.66	0.62	0.47	0.06
12 mm	D008012	D009112	1.10	0.66	0.66	0.00	0.06
13 mm	D008013	D009113	1.10	0.70	0.70	0.00	0.06
14 mm	D008014	D009114	1.10	0.78	0.78	0.00	0.08
15 mm	D008015	D009115	1.10	0.86	0.86	0.00	0.10
16 mm	D008016	D009116	1.10	0.86	0.86	0.00	0.10
17 mm	D008017	D009117	1.18	0.94	0.94	0.00	0.10
18 mm	D008018	D009118	1.18	1.02	1.02	0.00	0.10
19 mm	D008019	D009119	1.18	1.02	1.02	0.00	0.12
20 mm	D008020	D009120	1.18	1.09	1.09	0.00	0.15
21 mm	D008021	D009121	1.18	1.09	1.09	0.00	0.15
22 mm	D008022	D009122	1.18	1.17	1.17	0.00	0.16
23 mm	D008023	D009123	1.18	1.25	1.25	0.00	0.16
24 mm	D008024		1.18	1.25	1.25	0.00	0.17

\* Meets A.N.S.I. standards



## Metric Deep Chrome Sockets

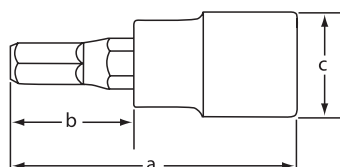
Size	6 POINT Part No.	12 POINT Part No.	Overall Length (a) inches	Drive End (b) inches	Hex End (c) inches	Taper Length (d) inches	Net Weight (lbs)
6 mm	D008206	D009706	2.48	0.66	0.39	1.50	0.09
7 mm	D008207	D009707	2.48	0.66	0.43	1.50	0.09
8 mm	D008208	D009708	2.48	0.66	0.47	1.50	0.09
9 mm	D008209	D009709	2.48	0.66	0.52	1.50	0.10
10 mm	D008210	D009710	2.48	0.66	0.58	1.50	0.10
11 mm	D008211	D009711	2.48	0.66	0.62	1.50	0.11
12 mm	D008212	D009712	2.48	0.70	0.70	0.00	0.11
13 mm	D008213	D009713	2.48	0.74	0.74	0.00	0.13
14 mm	D008214	D009714	2.48	0.78	0.78	0.00	0.16
15 mm	D008215	D009715	2.48	0.86	0.86	0.00	0.18
16 mm	D008216	D009716	2.48	0.86	0.86	0.00	0.20
17 mm	D008217	D009717	2.48	0.94	0.94	0.00	0.23
18 mm	D008218	D009718	2.48	1.02	1.02	0.00	0.25
19 mm	D008219	D009719	2.48	1.02	1.02	0.00	0.27
20 mm	D008220		2.48	1.09	1.09	0.00	0.33
21 mm	D008221		2.48	1.09	1.09	0.00	0.34
22 mm	D008222		2.48	1.17	1.17	0.00	0.37
23 mm	D008223		2.48	1.25	1.25	0.00	0.38

\* Meets A.N.S.I. standards

## Hex Head Sockets SAE-Standard Length

Size	Part No.	Overall Length (a) inches	Bit Length (b) inches	Drive End Width (c) inches	Net Weight (lbs)
1/8"	D006052	1.89	0.87	0.70	0.09
5/32"	D006053	1.89	0.87	0.70	0.09
3/16"	D006054	1.89	0.87	0.70	0.09
7/32"	D006056	1.89	0.87	0.70	0.10
1/4"	D006058	1.89	0.87	0.70	0.10
5/16"	D006060	1.89	0.87	0.70	0.10
3/8"	D006062	1.89	0.87	0.70	0.13

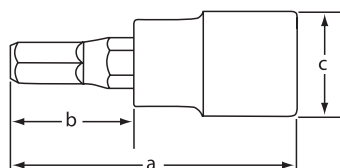
\* Meets A.N.S.I. standards



## Hex Head Sockets SAE-Long

Size	Part No.	Overall Length (a) inches	Bit Length (b) inches	Drive End Width (c) inches	Net Weight (lbs)
1/8"	D006452	3.62	2.60	0.70	0.17
5/32"	D006453	3.62	2.60	0.70	0.17
3/16"	D006454	3.62	2.60	0.70	0.17
7/32"	D006456	3.62	2.60	0.70	0.17
1/4"	D006458	3.62	2.60	0.70	0.17
5/16"	D006460	3.62	2.60	0.70	0.17
3/8"	D006462	3.62	2.60	0.70	0.26

\* Meets A.N.S.I. standards



## Hex Head Ball Nose Sockets SAE-Long

Size	Part No.	Overall Length (a) inches	Bit Length (b) inches	Drive End Width (c) inches	Net Weight (lbs)
1/8"	D006952	3.62	2.60	0.70	0.17
5/32"	D006953	3.62	2.60	0.70	0.17
3/16"	D006954	3.62	2.60	0.70	0.17
7/32"	D006956	3.62	2.60	0.70	0.17
1/4"	D006958	3.62	2.60	0.70	0.17
5/16"	D006960	3.62	2.60	0.70	0.17
3/8"	D006962	3.62	2.60	0.70	0.26

\* Meets A.N.S.I. standards

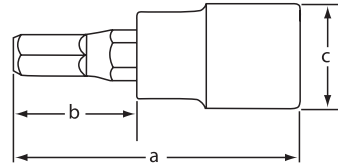




## Hex Head Sockets Metric-Standard Length

Size	Part No.	Overall Length (a) inches	Bit Length (b) inches	Drive End Width (c) inches	Net Weight (lbs)
4 mm	D006004	1.89	0.87	0.70	0.09
5 mm	D006005	1.89	0.87	0.70	0.09
6 mm	D006006	1.89	0.87	0.70	0.10
7 mm	D006007	1.89	0.87	0.70	0.10
8 mm	D006008	1.89	0.87	0.70	0.10
9 mm	D006009	1.89	0.87	0.70	0.11
10 mm	D006010	1.89	0.87	0.70	0.13

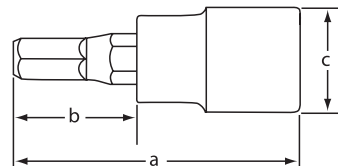
\* Meets A.N.S.I. standards



## Hex Head Sockets Metric-Long

Size	Part No.	Overall Length (a) inches	Bit Length (b) inches	Drive End Width (c) inches	Net Weight (lbs)
4 mm	D006404	3.62	2.60	0.70	0.17
5 mm	D006405	3.62	2.60	0.70	0.17
6 mm	D006406	3.62	2.60	0.70	0.17
7 mm	D006407	3.62	2.60	0.70	0.17
8 mm	D006408	3.62	2.60	0.70	0.17
9 mm	D006409	3.62	2.60	0.70	0.17
10 mm	D006410	3.62	2.60	0.70	0.26

\* Meets A.N.S.I. standards



## Hex Head Ball Nose Sockets Metric-Long

Size	Part No.	Overall Length (a) inches	Bit Length (b) inches	Drive End Width (c) inches	Net Weight (lbs)
4 mm	D006904	3.62	2.60	0.70	0.17
5 mm	D006905	3.62	2.60	0.70	0.17
6 mm	D006906	3.62	2.60	0.70	0.17
7 mm	D006907	3.62	2.60	0.70	0.17
8 mm	D006908	3.62	2.60	0.70	0.17
9 mm	D006909	3.62	2.60	0.70	0.17
10 mm	D006910	3.62	2.60	0.70	0.26

\* Meets A.N.S.I. standards



## Slotted Head Sockets-Standard Length

Size	Part No.	Overall Length (a) inches	Bit Length (b) inches	Drive End Width (c) inches	Net Weight (lbs)
SL5	D006105	1.89	0.87	0.70	0.11
SL6	D006106	1.89	0.87	0.70	0.11
SL7	D006107	1.89	0.87	0.70	0.11
SL8	D006108	1.89	0.87	0.70	0.11

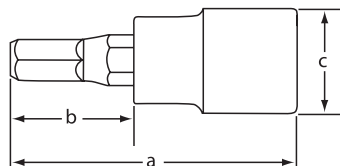
\* Meets A.N.S.I. standards



## Phillips® Head Sockets-Standard Length

Size	Part No.	Overall Length (a) inches	Bit Length (b) inches	Drive End Width (c) inches	Net Weight (lbs)
PH1	D006201	1.89	0.87	0.70	0.09
PH2	D006202	1.89	0.87	0.70	0.09
PH3	D006203	1.89	0.87	0.70	0.09
PH4	D006204	1.89	0.87	0.70	0.09

\* Meets A.N.S.I. standards



## Torx® Head Sockets-Regular Length

Size	Part No.	Overall Length (a) inches	Bit Length (b) inches	Drive End Width (c) inches	Net Weight (lbs)
T15	D006315	1.89	0.87	0.70	0.11
T20	D006320	1.89	0.87	0.70	0.11
T25	D006325	1.89	0.87	0.70	0.11
T27	D006327	1.89	0.87	0.70	0.11
T30	D006330	1.89	0.87	0.70	0.11
T40	D006340	1.89	0.87	0.70	0.11
T45	D006345	1.89	0.87	0.70	0.11
T50	D006350	1.89	0.87	0.70	0.11
T55	D006355	1.89	0.87	0.70	0.11

\* Meets A.N.S.I. standards



## Torx® Head Sockets-Long

Size	Part No.	Overall Length (a) inches	Bit Length (b) inches	Drive End Width (c) inches	Net Weight (lbs)
T15	D006715	3.62	2.60	0.70	0.17
T20	D006720	3.62	2.60	0.70	0.17
T25	D006725	3.62	2.60	0.70	0.17
T27	D006727	3.62	2.60	0.70	0.17
T30	D006730	3.62	2.60	0.70	0.17
T40	D006740	3.62	2.60	0.70	0.17
T45	D006745	3.62	2.60	0.70	0.20
T50	D006750	3.62	2.60	0.70	0.20
T55	D006755	3.62	2.60	0.70	0.20

\* Meets A.N.S.I. standards



## SAE Flex Head Crow Foot Sockets



Size	Part No.	Overall Length (inches)	Drive End Width (inches)	Net Weight (lbs)
3/8"	D008642	1.93	0.75	0.10
7/16"	D008644	2.09	0.75	0.12
1/2"	D008646	2.09	0.75	0.12
9/16"	D008648	2.36	0.75	0.17
5/8"	D008650	2.89	0.98	0.33
11/16"	D008652	2.89	0.98	0.32
3/4"	D008654	2.89	0.98	0.32

\* Meets A.N.S.I. standards

## Metric Flex Head Crow Foot Sockets



Size	Part No.	Overall Length (inches)	Drive End Width (inches)	Net Weight (lbs)
10 mm	D008760	1.93	0.75	0.10
11 mm	D008761	2.09	0.75	0.12
12 mm	D008762	2.09	0.75	0.12
13 mm	D008763	2.36	0.75	0.17
14 mm	D008764	2.36	0.75	0.17
15 mm	D008765	2.36	0.75	0.16
16 mm	D008766	2.89	0.98	0.33
17 mm	D008767	2.89	0.98	0.33
18 mm	D008768	2.89	0.98	0.32
19 mm	D008769	2.89	0.98	0.31

\* Meets A.N.S.I. standards

## SAE U-Joint Sockets



Size	Part No.	Overall Length (inches)	Drive End Width (inches)	Net Weight (lbs)
3/8"	D008612	1.73	0.75	0.12
7/16"	D008614	1.81	0.75	0.12
1/2"	D008616	1.93	0.75	0.13
9/16"	D008618	1.93	0.75	0.13
5/8"	D008620	1.93	0.75	0.14
11/16"	D008622	1.93	0.75	0.16
3/4"	D008624	2.01	0.75	0.16

\* Meets A.N.S.I. standards

## Metric U-Joint Sockets



Size	Part No.	Overall Length (inches)	Drive End Width (inches)	Net Weight (lbs)
10 mm	D008710	1.73	0.75	0.12
11 mm	D008711	1.81	0.75	0.12
12 mm	D008712	1.81	0.75	0.13
13 mm	D008713	1.93	0.75	0.13
14 mm	D008714	1.93	0.75	0.13
15 mm	D008715	1.93	0.75	0.14
16 mm	D008716	1.93	0.75	0.14
17 mm	D008717	1.93	0.75	0.16
18 mm	D008718	2.01	0.75	0.16
19 mm	D008719	2.01	0.75	0.16

\* Meets A.N.S.I. standards

# Attachments

## Impact Socket Attachments



### Impact Universal Joint

Part No.	Drive Size (inches)	Length (inches)	Weight (lbs)
D008660	3/8	1.97	0.20
D016660	1/2	2.59	0.35
D022660	3/4	3.62	1.15



### Impact Extension

Part No.	Drive Size (inches)	Length (inches)	Weight (lbs)
D005053	3/8	3	0.15
D005056	3/8	6	0.30
D012055	1/2	5	0.50
D012060	1/2	10	0.95
D019056	3/4	6	1.60
D019060	3/4	10	2.45



### Impact Adapter

Part No.	Length (inches)	Female (inches)	Male (inches)	Weight (lbs)
D005710	1.45	3/8	1/2	0.15
D012710	1.50	1/2	3/8	0.15
D012711	1.89	1/2	3/4	0.35
D019710	2.21	3/4	1/2	0.65



# Impact Sockets

## 8 Piece 6 Point Standard SAE Impact Socket Set

Part No. D010020



**Set Content:**

8 Standard SAE Impact Sockets: 5/16", 3/8", 7/16", 1/2", 9/16", 5/8", 11/16", 3/4"  
Includes Rail.

## 8 Piece 6 Point Deep SAE Impact Socket Set

Part No. D010021



**Set Content:**

8 Deep SAE Impact Sockets: 5/16", 3/8", 7/16", 1/2", 9/16", 5/8", 11/16", 3/4"  
Includes Rail.

# Impact Sockets

## 12 Piece 6 Point Standard Metric Impact Socket Set

Part No. D010022



**Set Content:**

12 Standard Metric Impact Sockets: 8, 9, 10, 11, 12, 13, 14, 15, 16, 17, 18, 19mm  
Includes Rail.

## 12 Piece 6 Point Deep Metric Impact Socket Set

Part No. D010023



**Set Content:**


12 Deep Metric Impact Sockets: 8, 9, 10, 11, 12, 13, 14, 15, 16, 17, 18, 19mm  
Includes Rail.



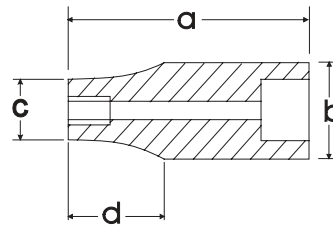
# Impact Sockets




## SAE Standard Impact Sockets

Size	 Part No.	Overall Length (a) inches	Drive End Width (b) inches	Hex End Length (c) inches	Taper Length (d) inches	Net Weight (lbs)
5/16"	D007310	1.12	0.74	0.49	0.47	0.08
3/8"	D007312	1.12	0.74	0.54	0.47	0.08
7/16"	D007314	1.18	0.74	0.58	0.47	0.09
1/2"	D007316	1.18	0.74	0.67	0.47	0.09
9/16"	D007318	1.18	0.78	0.78	0.00	0.09
5/8"	D007320	1.18	0.94	0.94	0.00	0.15
11/16"	D007322	1.24	0.94	0.94	0.00	0.15
3/4"	D007324	1.24	1.02	1.02	0.00	0.17

\* Meets A.N.S.I. standards



## SAE Deep Impact Sockets

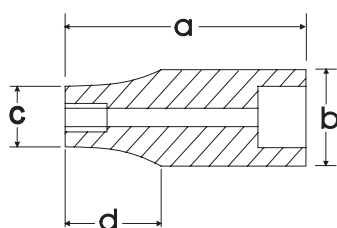
Size	 Part No.	Overall Length (a) inches	Drive End Width (b) inches	Hex End Length (c) inches	Taper Length (d) inches	Net Weight (lbs)
5/16"	D007510	2.48	0.74	0.49	0.51	0.21
3/8"	D007512	2.48	0.74	0.54	0.51	0.21
7/16"	D007514	2.48	0.74	0.58	0.51	0.21
1/2"	D007516	2.48	0.74	0.67	0.51	0.21
9/16"	D007518	2.48	0.78	0.78	0.00	0.22
5/8"	D007520	2.48	0.94	0.94	0.00	0.29
11/16"	D007522	2.48	0.94	0.94	0.00	0.29
3/4"	D007524	2.48	1.02	1.02	0.00	0.32

\* Meets A.N.S.I. standards

## Metric Standard Impact Sockets

Size	Part No.	Overall Length (a) inches	Drive End Width (b) inches	Hex End Length (c) inches	Taper Length (d) inches	Net Weight (lbs)
8 mm	D007008	1.12	0.74	0.49	0.47	0.08
9 mm	D007009	1.12	0.74	0.55	0.47	0.08
10 mm	D007010	1.12	0.74	0.59	0.47	0.08
11 mm	D007011	1.12	0.74	0.67	0.47	0.09
12 mm	D007012	1.12	0.74	0.74	0.00	0.09
13 mm	D007013	1.12	0.74	0.74	0.00	0.09
14 mm	D007014	1.12	0.78	0.78	0.00	0.09
15 mm	D007015	1.12	0.86	0.86	0.00	0.11
16 mm	D007016	1.12	0.94	0.94	0.00	0.15
17 mm	D007017	1.12	0.94	0.94	0.00	0.15
18 mm	D007018	1.12	1.00	1.00	0.00	0.15
19 mm	D007019	1.12	1.02	1.02	0.00	0.17

\* Meets A.N.S.I. standards



## Metric Deep Impact Sockets

Size	Part No.	Overall Length (a) inches	Drive End Width (b) inches	Hex End Length (c) inches	Taper Length (d) inches	Net Weight (lbs)
8 mm	D007208	2.48	0.74	0.49	0.51	0.21
9 mm	D007209	2.48	0.74	0.55	0.51	0.21
10 mm	D007210	2.48	0.74	0.59	0.51	0.21
11 mm	D007211	2.48	0.74	0.67	0.51	0.21
12 mm	D007212	2.48	0.74	0.74	0.00	0.21
13 mm	D007213	2.48	0.74	0.74	0.00	0.21
14 mm	D007214	2.48	0.78	0.78	0.00	0.22
15 mm	D007215	2.48	0.86	0.86	0.00	0.24
16 mm	D007216	2.48	0.94	0.94	0.00	0.29
17 mm	D007217	2.48	0.94	0.94	0.00	0.29
18 mm	D007218	2.48	1.00	1.00	0.00	0.32
19 mm	D007219	2.48	1.02	1.02	0.00	0.32

\* Meets A.N.S.I. standards





# Hand Sockets

## 16 Piece 6 Point Standard SAE Socket Set

Part No. D018000



**Set Content:**

16 Standard SAE Sockets: 3/8", 7/16", 1/2", 9/16", 5/8", 11/16", 3/4", 13/16", 7/8", 15/16", 1", 1-1/16", 1-1/8", 1-3/16", 1-1/4", 1-5/16"

Includes Rail.

---

## 16 Piece 6 Point Deep SAE Socket Set

Part No. D018001



**Set Content:**

16 Deep SAE Sockets: 3/8", 7/16", 1/2", 9/16", 5/8", 11/16", 3/4", 13/16", 7/8", 15/16", 1", 1-1/16", 1-1/8", 1-3/16", 1-1/4", 1-5/16"

Includes Rail.

---



## 16 Piece 12 Point Standard SAE Socket Set

Part No. D018002



**Set Content:**

16 Standard SAE Sockets: 3/8", 7/16", 1/2", 9/16", 5/8", 11/16", 3/4", 13/16", 7/8", 15/16", 1", 1-1/16", 1-1/8", 1-3/16", 1-1/4", 1-5/16"

Includes Rail.

## 16 Piece 12 Point Deep SAE Socket Set

Part No. D018003



**Set Content:**

16 Deep SAE Sockets: 3/8", 7/16", 1/2", 9/16", 5/8", 11/16", 3/4", 13/16", 7/8", 15/16", 1", 1-1/16", 1-1/8", 1-3/16", 1-1/4", 1-5/16"

Includes Rail.



# Hand Sockets

## 19 Piece 6 Point Standard Metric Socket Set

Part No. D018004



**Set Content:**

19 Standard Metric Sockets: 10, 11, 12, 13, 14, 15, 16, 17, 18, 19, 20, 21, 22, 23, 24, 25, 26, 27, 28mm  
Includes Rail.

---

## 19 Piece 6 Point Deep Metric Socket Set

Part No. D018005



**Set Content:**

19 Deep Metric Sockets: 10, 11, 12, 13, 14, 15, 16, 17, 18, 19, 20, 21, 22, 23, 24, 25, 26, 27, 28mm  
Includes Rail.

---

## 19 Piece 12 Point Standard Metric Socket Set

Part No. D018006



**Set Content:**

19 Standard Metric Sockets: 10, 11, 12, 13, 14, 15, 16, 17, 18, 19, 20, 21, 22, 23, 24, 25, 26, 27, 28mm  
Includes Rail.

---

## 18 Piece 12 Point Deep Metric Socket Set

Part No. D018007



**Set Content:**

18 Deep Metric Sockets: 10, 11, 12, 13, 14, 15, 16, 17, 18, 19, 20, 21, 22, 23, 24, 25, 26, 27mm  
Includes Rail.

---



# Hand Sockets

## 8 Piece Standard Length SAE Hex Socket Set

Part No. D018018



**Set Content:**

**8 SAE Hex Sockets: 1/4", 5/16", 3/8", 7/16", 1/2", 9/16", 5/8", 3/4"**

**Includes Rail.**

## 8 Piece Long SAE Hex Socket Set

Part No. D018019



**Set Content:**

**8 SAE Long Hex Sockets: 1/4", 5/16", 3/8", 7/16", 1/2", 9/16", 5/8", 3/4"**

**Includes Rail.**

## 7 Piece Standard Length Metric Hex Socket Set

Part No. D018014



**Set Content:**  
7 Metric Hex Sockets: 6, 8, 10, 12, 14, 17, 19mm  
Includes Rail.

## 7 Piece Long Metric Hex Socket Set

Part No. D018015



**Set Content:**  
7 Long Metric Hex Sockets: 6, 8, 10, 12, 14, 17, 19mm  
Includes Rail.



# Hand Sockets

## 7 Piece Standard Length Torx® Socket Set

Part No. D018016



**Set Content:**

**7 Torx® Sockets: T20, T25, T27, T30, T40, T45, T50**

**Includes Rail.**

## 7 Piece Long Torx® Socket Set

Part No. D018017



**Set Content:**

**7 Long Torx® Sockets: T20, T25, T27, T30, T40, T45, T50**

**Includes Rail.**

## 22 Piece 6 Point Standard SAE Socket Set

Part No. D018008



**Set Content:**

16 Standard SAE Sockets: 3/8", 7/16", 1/2", 9/16", 5/8", 11/16", 3/4", 13/16", 7/8", 15/16", 1", 1-1/16", 1-1/8", 1-3/16", 1-1/4", 1-5/16"  
5" Extension, 10" Extension, 45 Tooth Ratchet, Universal Joint, Flex Handle, T-Handle

Includes Metal Case.

## 25 Piece 6 Point Standard Metric Socket Set

Part No. D018009



**Set Content:**

19 Standard Metric Sockets: 10, 11, 12, 13, 14, 15, 16, 17, 18, 19, 20, 21, 22, 23, 24, 25, 26, 27, 28mm  
5" Extension, 10" Extension, 45 Tooth Ratchet, Universal Joint, Flex Handle, T-Handle

Includes Metal Case.



# Hand Sockets

## 38 Piece 6 Point Standard/Deep SAE Socket Set

Part No. D018012



**Set Content:**

16 Standard SAE Sockets: 3/8", 7/16", 1/2", 9/16", 5/8", 11/16", 3/4", 13/16", 7/8", 15/16", 1", 1-1/16", 1-1/8", 1-3/16", 1-1/4", 1-5/16"

16 Deep SAE Sockets: 3/8", 7/16", 1/2", 9/16", 5/8", 11/16", 3/4", 13/16", 7/8", 15/16", 1", 1-1/16", 1-1/8", 1-3/16", 1-1/4", 1-5/16"

5" Extension, 10" Extension, 45 Tooth Ratchet, Universal Joint, Flex Handle, T-Handle

Includes Blow Mold Case.

## 43 Piece 6 Point Standard/Deep Metric Socket Set

Part No. D018013



**Set Content:**

19 Standard Metric Sockets: 10, 11, 12, 13, 14, 15, 16, 17, 18, 19, 20, 21, 22, 23, 24, 25, 26, 27, 28mm

18 Deep Metric Sockets: 10, 12, 13, 14, 15, 16, 17, 18, 19, 20, 21, 22, 23, 24, 25, 26, 27, 28mm

5" Extension, 10" Extension, 45 Tooth Ratchet, Universal Joint, Flex Handle, T-Handle

Includes Blow Mold Case.



## 41 Piece 6 Point Standard SAE/Metric Socket Set

Part No. D018010



**Set Content:**

16 Standard SAE Sockets: 3/8", 7/16", 1/2", 9/16", 5/8", 11/16", 3/4", 13/16", 7/8", 15/16", 1", 1-1/16", 1-1/8", 1-3/16", 1-1/4", 1-5/16"

19 Standard Metric Sockets: 10, 11, 12, 13, 14, 15, 16, 17, 18, 19, 20, 21, 22, 23, 24, 25, 26, 27, 28mm  
5" Extension, 10" Extension, 45 Tooth Ratchet, Universal Joint, Flex Handle, T-Handle

Includes Blow Mold Case.

## 41 Piece 12 Point Standard SAE/Metric Socket Set

Part No. D018011



**Set Content:**

16 Standard SAE Sockets: 3/8", 7/16", 1/2", 9/16", 5/8", 11/16", 3/4", 13/16", 7/8", 15/16", 1", 1-1/16", 1-1/8", 1-3/16", c1-1/4", 1-5/16"

19 Standard Metric Sockets: 10, 11, 12, 13, 14, 15, 16, 17, 18, 19, 20, 21, 22, 23, 24, 25, 26, 27, 28mm  
5" Extension, 10" Extension, 45 Tooth Ratchet, Universal Joint, Flex Handle, T-Handle

Includes Blow Mold Case.



# Hand Socket Attachments



## Quick Release Ratchet-Chrome Handle

Part No.	Length (inches)	Weight (lbs)	No. of Teeth
D012301	9.33	1.46	45

## Quick Release Ratchet-Comfort Handle

Part No.	Length (inches)	Weight (lbs)	No. of Teeth
D012302	9.76	1.46	72

## Flex Head Ratchet

Part No.	Length (inches)	Weight (lbs)	No. of Teeth
D012308	17.75	2.12	48

## Flex Handle

Part No.	Length (inches)	Weight (lbs)
D012800	14.96	1.41
D012803	26.25	3.20

## Chrome Extension

Part No.	Length (inches)	Weight (lbs)
D012005	5.00	0.50
D012010	10.00	0.97

## Chrome Extension with Quick Release

Part No.	Length (inches)	Weight (lbs)
D012023	3.00	0.30
D012025	5.00	0.50
D012030	10.00	0.94

## Sliding T-Handle

Part No.	Length (inches)	Weight (lbs)
D012500	9.75	0.15

## Universal Joint

Part No.	Length (inches)	Weight (lbs)
D012600	2.76	0.33

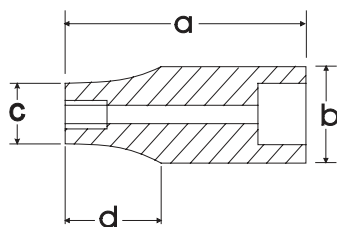
## Adapter

Part No.	Length (inches)	Female	Male	Weight (lbs)
D012701	1.42	1/2"	3/8"	0.15

## SAE Standard Chrome Sockets

Size			Overall Length (a) inches	Drive End (b) inches	Hex End (c) inches	Taper Length (d) inches	Net Weight (lbs)
	Part No.	Part No.					
3/8"	D016312	D015412	1.50	0.86	0.57	0.67	0.12
7/16"	D016314	D015414	1.50	0.86	0.67	0.67	0.12
1/2"	D016316	D015416	1.50	0.86	0.73	0.67	0.12
9/16"	D016318	D015418	1.50	0.86	0.81	0.67	0.12
5/8"	D016320	D015420	1.50	0.86	0.86	0.00	0.13
11/16"	D016322	D015422	1.50	0.94	0.94	0.00	0.14
3/4"	D016324	D015424	1.50	1.02	1.02	0.00	0.15
13/16"	D016326	D015426	1.50	1.09	1.09	0.00	0.17
7/8"	D016328	D015428	1.50	1.17	1.17	0.00	0.21
15/16"	D016330	D015430	1.57	1.25	1.25	0.00	0.24
1"	D016332	D015432	1.65	1.33	1.33	0.00	0.31
1-1/16"	D016334	D015434	1.65	1.41	1.41	0.00	0.32
1-1/8"	D016336	D015436	1.69	1.49	1.49	0.00	0.32
1-3/16"	D016338	D015438	1.73	1.57	1.57	0.00	0.37
1-1/4"	D016340	D015440	1.73	1.65	1.65	0.00	0.41
1-5/16"	D016342	D015442	1.73	1.72	1.72	0.00	0.43

\* Meets A.N.S.I. standards



## SAE Deep Chrome Sockets

Size			Overall Length (a) inches	Drive End (b) inches	Hex End (c) inches	Taper Length (d) inches	Net Weight (lbs)
	Part No.	Part No.					
3/8"	D016512	D015612	3.03	0.86	0.52	1.81	0.17
7/16"	D016514	D015614	3.03	0.86	0.57	1.81	0.17
1/2"	D016516	D015616	3.03	0.86	0.67	1.81	0.18
9/16"	D016518	D015618	3.03	0.86	0.73	1.81	0.21
5/8"	D016520	D015620	3.03	0.86	0.81	1.81	0.23
11/16"	D016522	D015622	3.03	0.86	0.86	0.00	0.27
3/4"	D016524	D015624	3.03	0.94	0.94	0.00	0.29
13/16"	D016526	D015626	3.03	1.02	1.02	0.00	0.36
7/8"	D016528	D015628	3.03	1.09	1.09	0.00	0.46
15/16"	D016530	D015630	3.03	1.17	1.17	0.00	0.49
1"	D016532	D015632	3.03	1.25	1.25	0.00	0.54
1-1/16"	D016534	D015634	3.03	1.33	1.33	0.00	0.56
1-1/8"	D016536	D015636	3.03	1.41	1.41	0.00	0.65
1-3/16"	D016538	D015638	3.03	1.49	1.49	0.00	0.73
1-1/4"	D016540	D015640	3.03	1.65	1.65	0.00	0.93
1-5/16"	D016542	D015642	3.03	1.72	1.72	0.00	0.99

\* Meets A.N.S.I. standards

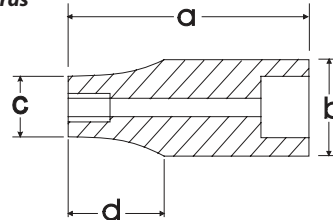




## Metric Standard Chrome Sockets

Size	6 POINT Part No.	12 POINT Part No.	Overall Length (a) inches	Drive End (b) inches	Hex End (c) inches	Taper Length (d) inches	Net Weight (lbs)
10 mm	D016010	D015110	1.50	0.86	0.59	0.67	0.11
11 mm	D016011	D015111	1.50	0.86	0.64	0.67	0.11
12 mm	D016012	D015112	1.50	0.86	0.69	0.67	0.12
13 mm	D016013	D015113	1.50	0.86	0.74	0.67	0.12
14 mm	D016014	D015114	1.50	0.86	0.80	0.67	0.12
15 mm	D016015	D015115	1.50	0.86	0.83	0.67	0.12
16 mm	D016016	D015116	1.50	0.86	0.86	0.00	0.13
17 mm	D016017	D015117	1.50	0.94	0.94	0.00	0.14
18 mm	D016018	D015118	1.50	1.02	1.02	0.00	0.17
19 mm	D016019	D015119	1.50	1.02	1.02	0.00	0.17
20 mm	D016020	D015120	1.50	1.09	1.09	0.00	0.18
21 mm	D016021	D015121	1.50	1.09	1.09	0.00	0.21
22 mm	D016022	D015122	1.50	1.17	1.17	0.00	0.21
23 mm	D016023	D015123	1.57	1.25	1.25	0.00	0.26
24 mm	D016024	D015124	1.57	1.25	1.25	0.00	0.26
25 mm	D016025	D015125	1.57	1.33	1.33	0.00	0.26
26 mm	D016026	D015126	1.65	1.33	1.33	0.00	0.30
27 mm	D016027	D015127	1.65	1.41	1.41	0.00	0.32
28 mm	D016028	D015128	1.69	1.49	1.49	0.00	0.36
29 mm	D016029		1.69	1.49	1.49	0.00	0.36
30 mm	D016030	D015130	1.73	1.57	1.57	0.00	0.38
31 mm	D016031		1.73	1.57	1.57	0.00	0.38
32 mm	D016032	D015132	1.73	1.65	1.65	0.00	0.39

\* Meets A.N.S.I. standards



## Metric Deep Chrome Sockets

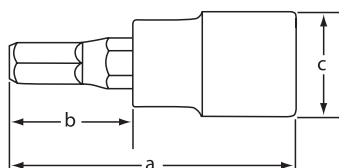
Size	6 POINT Part No.	12 POINT Part No.	Overall Length (a) inches	Drive End (b) inches	Hex End (c) inches	Taper Length (d) inches	Net Weight (lbs)
10 mm	D016210	D015710	3.03	0.86	0.59	1.81	0.17
11 mm	D016211	D015711	3.03	0.86	0.64	1.81	0.18
12 mm	D016212	D015712	3.03	0.86	0.69	1.81	0.19
13 mm	D016213	D015713	3.03	0.86	0.74	1.81	0.21
14 mm	D016214	D015714	3.03	0.86	0.80	1.81	0.23
15 mm	D016215	D015715	3.03	0.86	0.83	1.81	0.24
16 mm	D016216	D015716	3.03	0.86	0.86	0.00	0.27
17 mm	D016217	D015717	3.03	0.94	0.94	0.00	0.29
18 mm	D016218	D015718	3.03	1.02	1.02	0.00	0.35
19 mm	D016219	D015719	3.03	1.02	1.02	0.00	0.36
20 mm	D016220	D015720	3.03	1.09	1.09	0.00	0.38
21 mm	D016221	D015721	3.03	1.09	1.09	0.00	0.46
22 mm	D016222	D015722	3.03	1.17	1.17	0.00	0.49
23 mm	D016223	D015723	3.03	1.25	1.25	0.00	0.52
24 mm	D016224	D015724	3.03	1.25	1.25	0.00	0.54
25 mm	D016225	D015725	3.03	1.33	1.33	0.00	0.56
26 mm	D016226	D015726	3.03	1.33	1.33	0.00	0.64
27 mm	D016227	D015727	3.03	1.41	1.41	0.00	0.65
28 mm	D016228		3.03	1.49	1.49	0.00	0.70
29 mm	D016229		3.03	1.49	1.49	0.00	0.73
30 mm	D016230		3.03	1.57	1.57	0.00	0.78
31 mm	D016231		3.03	1.57	1.57	0.00	0.85
32 mm	D016232		3.03	1.65	1.65	0.00	0.93

\* Meets A.N.S.I. standards

## Hex Head Sockets SAE-Standard Length

Size	Part No.	Overall Length (a) inches	Bit Length (b) inches	Drive End Width (c) inches	Net Weight (lbs)
1/4"	D013058	2.44	0.94	0.86	0.14
5/16"	D013060	2.44	0.94	0.86	0.15
3/8"	D013062	2.44	0.94	0.86	0.18
7/16"	D013064	2.44	0.94	0.94	0.23
1/2"	D013066	2.44	0.94	0.94	0.33
9/16"	D013068	2.44	0.94	0.94	0.33
5/8"	D013070	2.44	0.94	1.02	0.40
3/4"	D013074	2.44	0.94	1.02	0.52

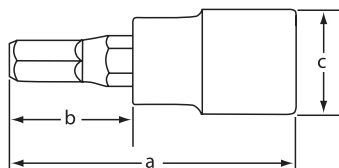
\* Meets A.N.S.I. standards



## Hex Head Sockets SAE-Long

Size	Part No.	Overall Length (a) inches	Bit Length (b) inches	Drive End Width (c) inches	Net Weight (lbs)
1/4"	D013458	3.94	2.44	0.86	0.17
5/16"	D013460	3.94	2.44	0.86	0.19
3/8"	D013462	3.94	2.44	0.86	0.24
7/16"	D013464	3.94	2.44	0.94	0.32
1/2"	D013466	3.94	2.44	0.94	0.43
9/16"	D013468	3.94	2.44	0.94	0.43
5/8"	D013470	3.94	2.44	1.02	0.60
3/4"	D013474	3.94	2.44	1.02	0.73

\* Meets A.N.S.I. standards



## Hex Head Sockets Metric-Standard Length

Size	Part No.	Overall Length (a) inches	Bit Length (b) inches	Drive End Width (c) inches	Net Weight (lbs)
6 mm	D013006	2.44	0.94	0.86	0.14
8 mm	D013008	2.44	0.94	0.86	0.15
10 mm	D013010	2.44	0.94	0.86	0.18
12 mm	D013012	2.44	0.94	0.94	0.23
14 mm	D013014	2.44	0.94	0.94	0.33
17 mm	D013017	2.44	0.94	1.02	0.43
19 mm	D013019	2.44	0.94	1.02	0.52

\* Meets A.N.S.I. standards

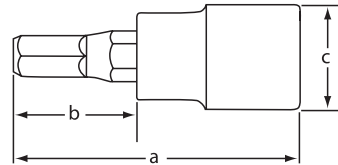


## Hex Head Sockets Metric-Long



Size	Part No.	Overall Length (a) inches	Bit Length (b) inches	Drive End Width (c) inches	Net Weight (lbs)
6 mm	D013406	3.94	2.44	0.86	0.17
8 mm	D013408	3.94	2.44	0.86	0.19
10 mm	D013410	3.94	2.44	0.86	0.24
12 mm	D013412	3.94	2.44	0.94	0.32
14 mm	D013414	3.94	2.44	0.94	0.43
17 mm	D013417	3.94	2.44	1.02	0.60
19 mm	D013419	3.94	2.44	1.02	0.73

\* Meets A.N.S.I. standards

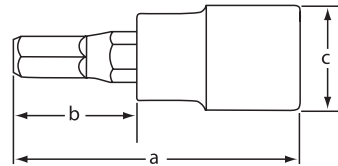


## Torx® Head Sockets-Standard Length



Size	Part No.	Overall Length (a) inches	Bit Length (b) inches	Drive End Width (c) inches	Net Weight (lbs)
T20	D013320	2.44	0.94	0.86	0.14
T25	D013325	2.44	0.94	0.86	0.14
T27	D013327	2.44	0.94	0.86	0.14
T30	D013330	2.44	0.94	0.86	0.14
T40	D013340	2.44	0.94	0.86	0.14
T45	D013345	2.44	0.94	0.86	0.15
T50	D013350	2.44	0.94	0.86	0.15

\* Meets A.N.S.I. standards



## Torx® Head Sockets-Long



Size	Part No.	Overall Length (a) inches	Bit Length (b) inches	Drive End Width (c) inches	Net Weight (lbs)
T20	D013720	4.00	2.38	0.86	0.16
T25	D013725	4.00	2.38	0.86	0.16
T27	D013727	4.00	2.38	0.86	0.17
T30	D013730	4.00	2.38	0.86	0.17
T40	D013740	4.00	2.38	0.86	0.17
T45	D013745	4.00	2.38	0.86	0.19
T50	D013750	4.00	2.38	0.86	0.19

\* Meets A.N.S.I. standards

## 17 Piece 6 Point Standard Impact SAE Socket Set

Part No. D018020



**Set Content:**

17 Standard SAE Impact Sockets: 3/8", 7/16", 1/2", 9/16", 5/8", 11/16", 3/4", 13/16", 7/8", 15/16", 1", 1-1/16", 1-1/8", 1-3/16", 1-1/4", 1-5/16", 1-3/8"

Includes Rail.

## 13 Piece 6 Point Deep Impact SAE Socket Set

Part No. D018021



**Set Content:**

13 Deep SAE Impact Sockets: 1/2", 9/16", 5/8", 11/16", 3/4", 13/16", 7/8", 15/16", 1", 1-1/16", 1-1/8", 1-3/16", 1-1/4"

Includes Rail.



# Impact Sockets

## 14 Piece 6 Point Standard Impact Metric Socket Set

Part No. D018023



**Set Content:**

14 Standard Metric Impact Sockets: 10, 11, 12, 13, 14, 15, 16, 17, 18, 19, 20, 21, 22, 23mm  
Includes Rail.

---

## 14 Piece 6 Point Deep Impact Metric Socket Set

Part No. D018022



**Set Content:**

14 Deep Metric Impact Sockets: 10, 11, 12, 13, 14, 15, 16, 17, 18, 19, 20, 21, 22, 23mm  
Includes Rail.

---

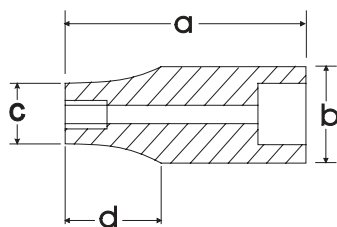


# Impact Sockets

## SAE Standard Impact Sockets

Size	Part No.	Overall Length (a) inches	Drive End Width (b) inches	Hex End Length (c) inches	Taper Length (d) inches	Net Weight (lbs)
3/8"	D014312	1.50	0.86	0.67	0.35	0.15
7/16"	D014314	1.50	0.86	0.71	0.35	0.15
1/2"	D014316	1.50	0.86	0.79	0.35	0.15
9/16"	D014318	1.50	0.94	0.87	0.35	0.18
5/8"	D014320	1.50	0.94	0.94	0.00	0.18
11/16"	D014322	1.50	1.02	1.02	0.00	0.22
3/4"	D014324	1.57	1.09	1.09	0.00	0.23
13/16"	D014326	1.57	1.17	1.17	0.00	0.29
7/8"	D014328	1.65	1.25	1.25	0.00	0.33
15/16"	D014330	1.73	1.33	1.33	0.00	0.40
1"	D014332	1.73	1.41	1.41	0.00	0.44
1-1/16"	D014334	1.81	1.49	1.49	0.00	0.55
1-1/8"	D014336	1.81	1.50	1.57	0.55	0.60
1-3/16"	D014338	1.81	1.50	1.65	0.55	0.66
1-1/4"	D014340	1.81	1.50	1.72	0.55	0.68
1-5/16"	D014342	1.81	1.50	1.76	0.63	0.73
1-3/8"	D014344	1.97	1.50	1.88	0.63	0.82
1-7/16"	D014346	1.97	1.50	1.96	0.63	0.90
1-1/2"	D014348	1.97	1.50	2.04	0.63	0.97

\* Meets A.N.S.I. standards



## SAE Deep Impact Sockets

Size	Part No.	Overall Length (a) inches	Drive End Width (b) inches	Hex End Length (c) inches	Taper Length (d) inches	Net Weight (lbs)
3/8"	D014512	3.07	0.86	0.67	0.63	0.35
7/16"	D014514	3.07	0.86	0.71	0.63	0.35
1/2"	D014516	3.07	0.94	0.79	0.63	0.42
9/16"	D014518	3.07	0.94	0.88	0.63	0.42
5/8"	D014520	3.07	0.94	0.94	0.00	0.42
11/16"	D014522	3.07	1.02	1.02	0.00	0.46
3/4"	D014524	3.07	1.09	1.09	0.00	0.53
13/16"	D014526	3.07	1.17	1.17	0.00	0.57
7/8"	D014528	3.07	1.25	1.25	0.00	0.66
15/16"	D014530	3.07	1.33	1.33	0.00	0.66
1"	D014532	3.07	1.41	1.41	0.00	0.77
1-1/16"	D014534	3.07	1.49	1.49	0.00	0.88
1-1/8"	D014536	3.07	1.50	1.57	0.55	0.88
1-3/16"	D014538	3.07	1.50	1.65	0.55	0.95
1-1/4"	D014540	3.07	1.50	1.72	0.55	0.99
1-5/16"	D014542	3.07	1.50	1.76	0.63	1.21
1-3/8"	D014544	3.07	1.50	1.88	0.63	1.28

\* Meets A.N.S.I. standards

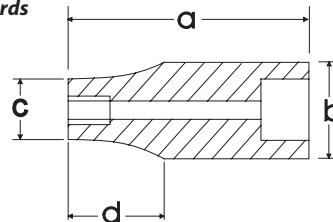


## Metric Standard Impact Sockets



Size	Part No.	Overall Length (a) inches	Drive End Width (b) inches	Hex End Length (c) inches	Taper Length (d) inches	Net Weight (lbs)
8 mm	D014008	1.50	0.86	0.55	0.35	0.15
9 mm	D014009	1.50	0.86	0.59	0.35	0.15
10 mm	D014010	1.50	0.86	0.67	0.35	0.15
11 mm	D014011	1.50	0.86	0.71	0.35	0.15
12 mm	D014012	1.50	0.86	0.75	0.35	0.15
13 mm	D014013	1.50	0.86	0.79	0.35	0.15
14 mm	D014014	1.50	0.94	0.87	0.35	0.18
15 mm	D014015	1.50	0.94	0.94	0.00	0.18
16 mm	D014016	1.50	0.94	0.94	0.00	0.18
17 mm	D014017	1.50	1.02	1.02	0.00	0.22
18 mm	D014018	1.50	1.02	1.02	0.00	0.22
19 mm	D014019	1.57	1.09	1.09	0.00	0.23
20 mm	D014020	1.57	1.17	1.17	0.00	0.29
21 mm	D014021	1.57	1.17	1.17	0.00	0.29
22 mm	D014022	1.65	1.25	1.25	0.00	0.33
23 mm	D014023	1.65	1.25	1.25	0.00	0.40
24 mm	D014024	1.73	1.33	1.33	0.00	0.40
25 mm	D014025	1.73	1.37	1.37	0.00	0.44
26 mm	D014026	1.73	1.41	1.41	0.00	0.44
27 mm	D014027	1.81	1.49	1.49	0.00	0.55
28 mm	D014028	1.81	1.50	1.57	0.55	0.60
29 mm	D014029	1.81	1.50	1.57	0.55	0.60
30 mm	D014030	1.81	1.50	1.65	0.55	0.66
31 mm	D014031	1.81	1.50	1.65	0.55	0.68
32 mm	D014032	1.81	1.50	1.72	0.55	0.68
36 mm	D014036	1.97	1.50	1.96	0.63	0.90

\* Meets A.N.S.I. standards



## Metric Deep Impact Sockets



Size	Part No.	Overall Length (a) inches	Drive End Width (b) inches	Hex End Length (c) inches	Taper Length (d) inches	Net Weight (lbs)
8 mm	D014208	3.07	0.86	0.55	0.63	0.35
9 mm	D014209	3.07	0.86	0.59	0.63	0.35
10 mm	D014210	3.07	0.86	0.67	0.63	0.35
11 mm	D014211	3.07	0.86	0.71	0.63	0.35
12 mm	D014212	3.07	0.86	0.75	0.63	0.35
13 mm	D014213	3.07	0.94	0.79	0.63	0.42
14 mm	D014214	3.07	0.94	0.87	0.63	0.42
15 mm	D014215	3.07	0.94	0.94	0.00	0.42
16 mm	D014216	3.07	0.94	0.94	0.00	0.42
17 mm	D014217	3.07	1.02	1.02	0.00	0.46
18 mm	D014218	3.07	1.02	1.02	0.00	0.53
19 mm	D014219	3.07	1.09	1.09	0.00	0.53
20 mm	D014220	3.07	1.17	1.17	0.00	0.53
21 mm	D014221	3.07	1.17	1.17	0.00	0.57
22 mm	D014222	3.07	1.25	1.25	0.00	0.66
23 mm	D014223	3.07	1.25	1.25	0.00	0.66
24 mm	D014224	3.07	1.33	1.33	0.00	0.66
27 mm	D014227	3.07	1.49	1.49	0.00	0.88
30 mm	D014230	3.07	1.50	1.65	0.55	0.95
36 mm	D014236	3.07	1.50	1.96	0.63	1.28

\* Meets A.N.S.I. standards

# Hand Sockets

## 21 Piece 12 Point Standard SAE Set

Part No. D023000



**Set Content:**

16 Regular SAE Sockets: 7/8", 15/16", 1", 1-1/16", 1-1/8", 1-3/16", 1-1/4", 1-5/16", 1-3/8", 1-7/16", 1-1/2", 1-5/8", 1-3/4", 1-13/16", 1-7/8", 2"  
4" Extension, 8" Extension, 16" Extension, Flex Handle, 24 Tooth Ratchet

Includes Blow Mold Case.

## 20 Piece 12 Point Standard Metric Set

Part No. D023001



**Set Content:**

15 Regular Metric Sockets: 19, 20, 21, 22, 23, 24, 25, 26, 27, 28, 29, 30, 32, 35, 36mm  
4" Extension, 8" Extension, 16" Extension, Flex Handle, 24 Tooth Ratchet

Includes Blow Mold Case.



# Hand Socket Attachments



## Ratchet-Chrome Handle

Part No.	Length (inches)	Weight (lbs)	No. of Teeth
D019301	19.69	4.34	24



## Flex Handle

Part No.	Length (inches)	Weight (lbs)
D019805	18.70	4.08



## Chrome Extension

Part No.	Length (inches)	Weight (lbs)
D019004	4.00	0.92
D019008	8.00	1.63
D019016	16.00	3.06



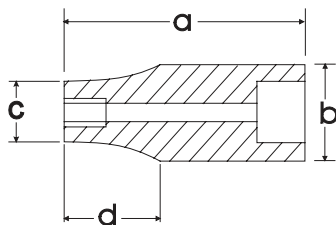
## Sliding T-Handle

Part No.	Length (inches)	Weight (lbs)
D019501	17.72	3.06

## SAE Standard Chrome Sockets

Size	Part No.	Overall Length (a) inches	Drive End Width (b) inches	Hex End Length (c) inches	Taper Length (d) inches	Net Weight (lbs)
7/8"	D022428	1.97	1.42	1.30	0.79	0.49
15/16"	D022430	1.97	1.42	1.36	0.79	0.49
1"	D022432	1.97	1.42	1.44	0.79	0.49
1-1/16"	D022434	2.05	1.42	1.50	0.83	0.49
1-1/8"	D022436	2.05	1.50	1.57	0.83	0.57
1-3/16"	D022438	2.13	1.50	1.65	0.87	0.60
1-1/4"	D022440	2.20	1.50	1.73	0.87	0.66
1-5/16"	D022442	2.20	1.50	1.81	0.87	0.77
1-3/8"	D022444	2.28	1.65	1.89	0.91	0.82
1-7/16"	D022446	2.28	1.65	1.97	0.91	0.97
1-1/2"	D022448	2.36	1.77	2.05	0.91	1.04
1-9/16"	D022450	2.44	1.77	2.13	0.91	1.10
1-5/8"	D022452	2.52	1.77	2.20	1.02	1.15
1-11/16"	D022454	2.56	1.77	2.28	1.02	1.19
1-3/4"	D022456	2.60	1.89	2.36	1.02	1.32
1-13/16"	D022458	2.68	1.89	2.44	1.02	1.48
1-7/8"	D022460	2.76	1.89	2.52	1.10	1.57
2"	D022464	2.83	1.89	2.68	1.18	1.65

\* Meets A.N.S.I. standards



## Metric Standard Chrome Sockets

Size	Part No.	Overall Length (a) inches	Drive End Width (b) inches	Hex End Length (c) inches	Taper Length (d) inches	Net Weight (lbs)
19 mm	D022119	1.95	1.42	1.14	0.79	0.49
20 mm	D022120	1.95	1.42	1.18	0.79	0.49
21 mm	D022121	1.97	1.42	1.26	0.79	0.49
22 mm	D022122	1.97	1.42	1.30	0.79	0.49
23 mm	D022123	1.97	1.42	1.34	0.79	0.49
24 mm	D022124	1.97	1.42	1.36	0.79	0.49
25 mm	D022125	1.97	1.42	1.44	0.79	0.49
26 mm	D022126	1.97	1.42	1.46	0.79	0.49
27 mm	D022127	2.05	1.42	1.50	0.83	0.49
28 mm	D022128	2.05	1.50	1.54	0.83	0.57
29 mm	D022129	2.05	1.50	1.57	0.83	0.57
30 mm	D022130	2.13	1.50	1.65	0.87	0.60
32 mm	D022132	2.20	1.50	1.73	0.87	0.66
35 mm	D022135	2.28	1.65	1.89	0.87	0.82
36 mm	D022136	2.28	1.65	1.97	0.91	0.97
38 mm	D022138	2.28	1.77	2.05	0.91	1.01
41 mm	D022141	2.52	1.77	2.20	1.02	1.15
46 mm	D022146	2.68	1.89	2.44	1.02	1.48
50 mm	D022150	2.83	1.89	2.68	1.18	1.72

\* Meets A.N.S.I. standards





# Impact Sockets

## 10 Piece 6 Point Standard Impact SAE Set

Part No. D021000



**Set Content:**

10 Regular SAE Impact Sockets: 15/16", 1", 1-1/16", 1-1/8", 1-1/4", 1-5/16", 1-3/8", 1-7/16", 1-1/2", 1-5/8"

Includes Blow Mold Case.

## 10 Piece 6 Point Deep Impact SAE Set

Part No. D021001



**Set Content:**

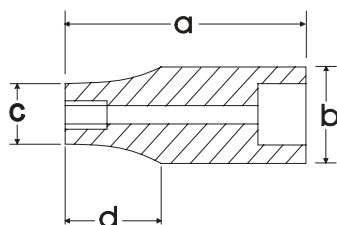
10 Deep SAE Impact Sockets: 15/16", 1", 1-1/16", 1-1/8", 1-1/4", 1-5/16", 1-3/8", 1-7/16", 1-1/2", 1-5/8"

Includes Blow Mold Case.

## SAE Standard Impact Sockets

Size	Part No.	Overall Length (a) inches	Drive End Width (b) inches	Hex End Length (c) inches	Taper Length (d) inches	Net Weight (lbs)
3/4"	D020324	2.05	1.49	1.19	0.94	0.51
13/16"	D020326	2.05	1.49	1.26	0.94	0.53
7/8"	D020328	2.05	1.49	1.34	0.94	0.55
15/16"	D020330	2.05	1.49	1.42	0.94	0.55
1"	D020332	2.05	1.49	1.49	0.00	0.57
1-1/16"	D020334	2.05	1.57	1.57	0.00	0.62
1-1/8"	D020336	2.05	1.65	1.65	0.00	0.73
1-3/16"	D020338	2.05	1.72	1.72	0.00	0.82
1-1/4"	D020340	2.05	1.73	1.80	0.00	0.82
1-5/16"	D020342	2.20	1.73	1.88	0.00	0.90
1-3/8"	D020344	2.20	1.73	1.96	0.00	0.97
1-7/16"	D020346	2.20	1.73	2.04	0.00	0.99
1-1/2"	D020348	2.20	1.73	2.08	0.00	1.01
1-9/16"	D020350	2.44	1.73	2.20	0.00	1.23
1-5/8"	D020352	2.44	1.73	2.28	0.00	1.30
1-11/16"	D020354	2.44	1.73	2.50	0.00	1.54
1-3/4"	D020356	2.44	1.73	2.55	0.00	1.65
1-13/16"	D020358	2.68	1.73	2.63	0.00	1.70
1-7/8"	D020360	2.68	1.73	2.67	0.00	1.74
1-15/16"	D020362	2.76	1.73	2.75	0.00	1.74
2"	D020364	2.83	2.13	2.79	0.00	1.94
2-1/16"	D020366	2.83	2.13	2.91	0.00	2.03
2-1/8"	D020368	2.83	2.13	3.02	0.00	2.76
2-3/16"	D020370	2.91	2.13	3.02	0.00	2.76
2-1/4"	D020372	2.91	2.13	3.14	0.00	3.20
2-5/16"	D020374	2.95	2.13	3.22	0.00	3.31
2-3/8"	D020376	2.95	2.13	3.30	0.00	3.31

\* Meets A.N.S.I. standards



## SAE Deep Impact Sockets

Size	Part No.	Overall Length (a) inches	Drive End Width (b) inches	Hex End Length (c) inches	Taper Length (d) inches	Net Weight (lbs)
3/4"	D020524	3.54	1.49	1.18	1.97	0.86
13/16"	D020526	3.54	1.49	1.26	1.97	0.88
7/8"	D020528	3.54	1.49	1.34	1.97	0.97
15/16"	D020530	3.54	1.49	1.42	1.97	0.97
1"	D020532	3.54	1.49	1.49	0.00	0.99
1-1/16"	D020534	3.54	1.57	1.57	0.00	1.12
1-1/8"	D020536	3.54	1.65	1.65	0.00	1.26
1-3/16"	D020538	3.54	1.72	1.72	0.00	1.34
1-1/4"	D020540	3.54	1.73	1.80	0.00	1.39
1-5/16"	D020542	3.54	1.73	1.88	0.00	1.46
1-3/8"	D020544	3.54	1.73	1.96	0.00	1.70
1-7/16"	D020546	3.54	1.73	2.04	0.00	1.70
1-1/2"	D020548	3.62	1.73	2.08	0.00	1.83
1-9/16"	D020550	3.62	1.73	2.20	0.00	1.90
1-5/8"	D020552	3.62	1.73	2.28	0.00	1.92

\* Meets A.N.S.I. standards

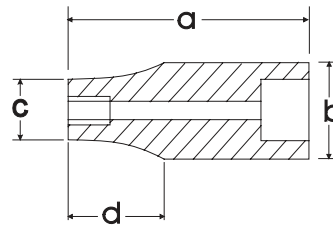


## Metric Impact Sockets



Size	Part No.	Overall Length (a) inches	Drive End Width (b) inches	Hex End Length (c) inches	Taper Length (d) inches	Net Weight (lbs)
24 mm	D020024	2.05	1.49	1.42	0.94	0.55
27 mm	D020027	2.05	1.57	1.57	0.00	0.62
28 mm	D020028	2.05	1.65	1.65	0.00	0.71
30 mm	D020030	2.05	1.72	1.72	0.00	0.82
32 mm	D020032	2.05	1.73	1.73	0.00	0.84
33 mm	D020033	2.20	1.73	1.88	0.00	0.90
34 mm	D020034	2.20	1.73	1.88	0.00	0.90
35 mm	D020035	2.20	1.73	1.96	0.00	1.04
36 mm	D020036	2.20	1.73	2.04	0.00	1.04
38 mm	D020038	2.20	1.73	2.08	0.00	1.04
40 mm	D020040	2.44	1.73	2.20	0.00	1.19
41 mm	D020041	2.44	1.73	2.28	0.00	1.30
42 mm	D020042	2.44	1.73	2.39	0.00	1.46
43 mm	D020043	2.48	1.73	2.47	0.00	1.54
46 mm	D020046	2.48	1.73	2.63	0.00	1.70
50 mm	D020050	2.83	2.13	2.79	0.00	2.14

\* Meets A.N.S.I. standards



## Metric Deep Impact Sockets



Size	Part No.	Overall Length (a) inches	Drive End Width (b) inches	Hex End Length (c) inches	Taper Length (d) inches	Net Weight (lbs)
19 mm	D020219	3.54	1.49	1.18	1.97	0.86
27 mm	D020227	3.54	1.57	1.57	0.00	1.10
30 mm	D020230	3.54	1.72	1.72	0.00	1.37
32 mm	D020232	3.54	1.73	1.80	0.00	1.39
33 mm	D020233	3.54	1.73	1.88	0.00	1.48
35 mm	D020235	3.54	1.73	1.96	0.00	1.70
36 mm	D020236	3.54	1.73	2.04	0.00	1.65
38 mm	D020238	3.62	1.73	2.08	0.00	1.83
41 mm	D020241	3.62	1.73	2.28	0.00	1.94
43 mm	D020243	3.62	1.73	2.47	0.00	2.31

\* Meets A.N.S.I. standards



# Hand Sockets

## 21 Piece 12 Point Standard SAE Set

Part No. D027001



**Set Content:**

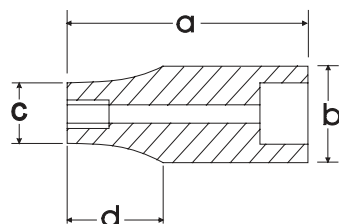
17 Regular SAE Sockets: 1-7/16", 1-1/2", 1-5/8", 1-11/16", 1-3/4", 1-13/16", 1-7/8", 2", 2-1/8", 2-3/16", 2-1/4", 2-3/8", 2-1/2", 2-5/8", 2-3/4", 2-15/16", 3-1/8"  
8" Extension, 16" Extension, Sliding T-Head, 24 Tooth Ratchet

Includes Metal Case.

## SAE Standard Chrome Sockets

Size	Part No.	Overall Length (a) inches	Drive End Width (b) inches	Hex End Length (c) inches	Taper Length (d) inches	Net Weight (lbs)
1-7/16"	D099446	2.56	1.77	2.05	0.98	1.04
1-1/2"	D099448	2.56	1.77	2.13	1.10	1.04
1-5/8"	D099450	2.76	1.77	2.24	1.10	1.19
1-11/16"	D099452	2.76	1.97	2.36	1.18	1.41
1-3/4"	D099454	2.95	1.97	2.48	1.18	1.70
1-13/16"	D099456	2.95	1.97	2.56	1.18	1.74
1-7/8"	D099458	2.95	1.97	2.64	1.18	2.12
2"	D099460	2.95	1.97	2.76	1.18	2.16
2-1/8"	D099464	3.15	2.17	2.91	1.26	2.25
2-3/16"	D099466	3.15	2.17	2.99	1.26	2.27
2-1/4"	D099468	3.15	2.17	3.07	1.26	2.31
2-3/8"	D099472	3.31	2.17	3.23	1.34	2.78
2-1/2"	D099476	3.43	2.17	3.39	1.34	2.87
2-5/8"	D099480	3.54	2.17	3.54	1.38	3.31
2-3/4"	D099482	3.66	2.36	3.70	1.38	3.84
2-15/16"	D099484	3.82	2.36	3.94	1.42	4.37
3-1/8"	D099488	4.06	2.36	4.13	1.42	4.63

\* Meets A.N.S.I. standards





# Hand Socket Attachments



## Ratchet-Chrome Handle

Part No.	Length (inches)	Weight (lbs)	No. of Teeth
D024301	24.25	10.20	24



## Flex Handle

Part No.	Length (inches)	Weight (lbs)
D027800	18.70	4.08



## Chrome Extension

Part No.	Length (inches)	Weight (lbs)
D024008	8.00	2.45
D024015	16.00	4.20



## Sliding T-Head

Part No.	Length (inches)	Weight (lbs)
D024500	3.25	1.40

# Wrenches



## **Complete Assortment**

Wide selection of combination, ratcheting, adjustable and pipe wrenches.

## **Large and Visible Markings**

Laser etched markings on combination wrenches improve size identification and provides SAE/metric differentiation.

## **User-Friendly Design**

Offset box end on most styles provides extra knuckle clearance.

## **Professional Grade**

All wrenches meet ANSI standards.

# Wrenches

## 12 Piece SAE Combination Wrench Set

Part No. D074202

**Set Content:**

12 SAE Combination Wrenches: 1/4", 5/16", 3/8", 7/16",  
1/2", 9/16", 5/8", 11/16", 3/4", 13/16", 7/8", 15/16"



Includes Canvas Roll.

## 14 Piece SAE Combination Wrench Set

Part No. D074201

**Set Content:**

14 SAE Combination Wrenches: 3/8", 7/16", 1/2", 9/16", 5/8",  
11/16", 3/4", 13/16", 7/8", 15/16", 1", 1-1/16", 1-1/8", 1-1/4"



Includes Canvas Roll.

# Wrenches

## 12 Piece SAE Combination Wrench Set - Contractor Series

Part No. D074222

**Set Content:**

**12 SAE Satin Finish Combination Wrenches:**  
1/4", 5/16", 3/8", 7/16", 1/2", 9/16", 5/8", 11/16", 3/4",  
13/16", 7/8", 15/16"



**Contractor Series - A superior alternative to raised panel wrenches.**



**Includes Canvas Roll.**



## 16 Piece SAE Combination Wrench Set - Contractor Series

Part No. D074221

**Set Content:**

**16 SAE Satin Finish Combination Wrenches:**  
1/4", 5/16", 3/8", 7/16", 1/2", 9/16", 5/8", 11/16",  
3/4", 13/16", 7/8", 15/16", 1", 1-1/16", 1-1/8", 1-1/4"



**Includes Canvas Roll.**

# Wrenches

## 11 Piece Metric Combination Wrench Set

Part No. D074204

**Set Content:**  
11 Metric Combination Wrenches:  
9, 10, 11, 12, 13, 14, 15, 16, 17, 18, 19mm



Includes Canvas Roll.

## 19 Piece Metric Combination Wrench Set

Part No. D074203

**Set Content:**  
19 Metric Combination Wrenches:  
6, 7, 8, 9, 10, 11, 12, 13, 14, 15, 16, 17,  
18, 19, 20, 21, 22, 23, 24mm



Includes Canvas Roll.

# Wrenches

## 11 Piece Metric Combination Wrench Set - Contractor Series

Part No. D074224

**Set Content:**  
11 Metric Satin Finish Combination Wrenches:  
9, 10, 11, 12, 13, 14, 15, 16, 17, 18, 19mm



Includes Canvas Roll.

## 19 Piece Metric Combination Wrench Set - Contractor Series

Part No. D074223

**Set Content:**  
19 Metric Satin Finish Combination Wrenches:  
6, 7, 8, 9, 10, 11, 12, 13, 14, 15, 16, 17,  
18, 19, 20, 21, 22, 23, 24mm



Includes Canvas Roll.

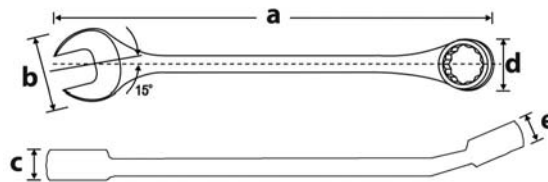
# Wrenches



## SAE Combination Wrenches - Mirror Chrome Finish

Size	Part No.	Overall Length (a) inches	Head Width (b) inches	Head Thickness (c) inches	Box End Width (d) inches	Box End Thickness (e) inches	Net Weight (lbs)
1/4"	D074008	5.04	0.54	0.17	0.41	0.18	0.05
5/16"	D074010	5.83	0.74	0.19	0.50	0.22	0.07
3/8"	D074012	6.06	0.81	0.23	0.61	0.32	0.10
7/16"	D074014	6.57	0.91	0.27	0.70	0.33	0.14
1/2"	D074016	7.01	1.04	0.28	0.80	0.35	0.16
9/16"	D074018	7.48	1.14	0.30	0.87	0.38	0.21
5/8"	D074020	8.07	1.28	0.33	0.96	0.42	0.27
11/16"	D074022	8.86	1.43	0.35	1.05	0.43	0.34
3/4"	D074024	9.76	1.52	0.36	1.11	0.44	0.39
13/16"	D074026	10.63	1.67	0.39	1.20	0.49	0.51
7/8"	D074028	11.50	1.83	0.41	1.31	0.51	0.63
15/16"	D074030	12.36	1.91	0.43	1.39	0.55	0.73
1"	D074032	13.23	1.98	0.45	1.44	0.57	0.93
1 1/16"	D074034	14.13	2.11	0.48	1.51	0.61	1.13
1 1/8"	D074036	15.35	2.25	0.51	1.70	0.62	1.46
1 1/4"	D074040	16.73	2.44	0.51	1.78	0.65	1.87

\* Meets A.N.S.I. standards



## Metric Combination Wrenches - Mirror Chrome Finish

Size	Part No.	Overall Length (a) inches	Head Width (b) inches	Head Thickness (c) inches	Box End Width (d) inches	Box End Thickness (e) inches	Net Weight (lbs)
6 mm	D074106	5.04	0.54	0.17	0.41	0.18	0.05
7 mm	D074107	5.43	0.60	0.18	0.46	0.20	0.06
8 mm	D074108	5.83	0.74	0.19	0.50	0.22	0.07
9 mm	D074109	6.06	0.81	0.23	0.61	0.32	0.10
10 mm	D074110	6.38	0.85	0.24	0.57	0.33	0.11
11 mm	D074111	6.57	0.91	0.27	0.70	0.33	0.14
12 mm	D074112	6.85	1.01	0.27	0.72	0.31	0.15
13 mm	D074113	7.01	1.04	0.28	0.80	0.35	0.16
14 mm	D074114	7.48	1.14	0.30	0.87	0.38	0.21
15 mm	D074115	8.07	1.28	0.33	0.96	0.42	0.27
16 mm	D074116	8.07	1.28	0.33	0.96	0.42	0.27
17 mm	D074117	8.86	1.43	0.35	1.05	0.43	0.34
18 mm	D074118	9.76	1.52	0.36	1.11	0.44	0.39
19 mm	D074119	9.76	1.52	0.36	1.11	0.44	0.39
20 mm	D074120	10.63	1.67	0.39	1.20	0.49	0.51
21 mm	D074121	10.63	1.67	0.39	1.20	0.49	0.51
22 mm	D074122	11.50	1.83	0.41	1.31	0.51	0.63
23 mm	D074123	12.36	1.91	0.43	1.39	0.55	0.73
24 mm	D074124	12.36	1.91	0.43	1.39	0.55	0.73
25 mm	D074125	13.23	1.98	0.45	1.44	0.57	0.93
26 mm	D074126	13.23	1.98	0.45	1.44	0.57	0.93
27 mm	D074127	14.13	2.11	0.48	1.51	0.61	1.13
28 mm	D074128	15.35	2.25	0.51	1.70	0.62	1.46
29 mm	D074129	15.35	2.25	0.51	1.70	0.62	1.46
30 mm	D074130	15.35	2.25	0.51	1.70	0.62	1.46
32 mm	D074132	16.73	2.44	0.51	1.78	0.65	1.87

\* Meets A.N.S.I. standards



# Wrenches

## SAE Contractor Series Combination Wrenches - Satin Finish



Contractor Series - A superior alternative to raised panel wrenches.



Size	Part No.	Overall Length (a) inches	Head Width (b) inches	Head Thickness (c) inches	Box End Width (d) inches	Box End Thickness (e) inches	Net Weight (lbs)
1/4"	D074308	5.08	0.60	0.17	0.42	0.23	0.05
5/16"	D074310	5.59	0.73	0.19	0.51	0.26	0.07
3/8"	D074312	6.34	0.82	0.20	0.61	0.29	0.13
7/16"	D074314	6.61	0.91	0.23	0.68	0.31	0.14
1/2"	D074316	7.09	1.04	0.25	0.76	0.34	0.17
9/16"	D074318	7.60	1.06	0.25	0.79	0.34	0.24
5/8"	D074320	8.15	1.29	0.31	0.91	0.36	0.33
11/16"	D074322	8.94	1.35	0.31	0.96	0.41	0.40
3/4"	D074324	9.84	1.54	0.37	1.09	0.45	0.44
13/16"	D074326	10.67	1.71	0.39	1.21	0.50	0.62
7/8"	D074328	11.61	1.80	0.40	1.29	0.53	0.66
15/16"	D074330	12.48	1.95	0.41	1.36	0.56	0.84
1"	D074332	13.35	2.03	0.45	1.44	0.59	1.06
1 1/16"	D074334	14.25	2.18	0.48	1.52	0.62	1.28
1 1/8"	D074336	15.51	2.30	0.50	1.67	0.65	1.50
1 1/4"	D074340	16.89	2.56	0.53	1.80	0.71	1.94
1 5/16"	D074342	18.54	2.80	0.61	1.95	0.75	2.43
1 3/8"	D074344	18.54	2.80	0.61	1.95	0.75	2.43
1 7/16"	D074346	20.08	2.99	0.65	2.17	0.83	2.87
1 1/2"	D074348	20.08	2.99	0.65	2.17	0.83	2.87
1 5/8"	D074350	21.65	3.27	0.69	2.36	0.75	2.67
1 11/16"	D074352	21.65	3.27	0.69	2.36	0.75	2.67
1 3/4"	D074354	24.13	3.39	0.81	2.40	0.75	4.85
1 13/16"	D074356	24.13	3.39	0.81	2.40	0.75	4.85
1 7/8"	D074358	25.63	3.78	0.94	2.87	0.75	6.39
2"	D074360	25.63	3.78	0.94	2.87	0.75	6.39
2 1/8"	D074362	28.50	4.45	1.22	3.23	0.92	8.60
2 1/4"	D074364	28.50	4.45	1.22	3.23	0.92	8.60
2 3/8"	D074366	29.25	4.69	1.28	3.68	1.00	10.36
2 1/2"	D074368	29.25	4.69	1.28	3.68	1.00	10.36

\* Meets A.N.S.I. standards

## Metric Contractor Series Combination Wrenches - Satin Finish



Size	Part No.	Overall Length (a) inches	Head Width (b) inches	Head Thickness (c) inches	Box End Width (d) inches	Box End Thickness (e) inches	Net Weight (lbs)
6 mm	D074406	5.08	0.60	0.17	0.42	0.23	0.05
7 mm	D074407	5.31	0.64	0.18	0.46	0.24	0.06
8 mm	D074408	5.59	0.73	0.19	0.51	0.26	0.07
9 mm	D074409	6.10	0.76	0.19	0.54	0.26	0.11
10 mm	D074410	6.34	0.82	0.20	0.61	0.29	0.13
11 mm	D074411	6.61	0.91	0.23	0.68	0.31	0.14
12 mm	D074412	6.85	0.94	0.23	0.70	0.32	0.15
13 mm	D074413	7.09	1.04	0.25	0.76	0.34	0.17
14 mm	D074414	7.60	1.06	0.25	0.79	0.34	0.24
15 mm	D074415	7.87	1.21	0.28	0.89	0.35	0.29
16 mm	D074416	8.15	1.29	0.31	0.91	0.36	0.33
17 mm	D074417	8.94	1.35	0.31	0.96	0.41	0.40
18 mm	D074418	9.41	1.48	0.34	1.05	0.44	0.42
19 mm	D074419	9.84	1.54	0.37	1.09	0.45	0.44
20 mm	D074420	10.20	1.60	0.37	1.13	0.47	0.51
21 mm	D074421	10.67	1.71	0.39	1.21	0.50	0.62
22 mm	D074422	11.61	1.80	0.40	1.29	0.53	0.66
23 mm	D074423	12.48	1.95	0.41	1.36	0.56	0.84
24 mm	D074424	12.48	1.95	0.41	1.36	0.56	0.84
25 mm	D074425	13.35	2.03	0.45	1.44	0.59	1.06
26 mm	D074426	13.35	2.03	0.45	1.44	0.59	1.06
27 mm	D074427	14.25	2.18	0.48	1.52	0.62	1.28
28 mm	D074428	15.51	2.30	0.50	1.67	0.65	1.63
29 mm	D074429	15.51	2.30	0.50	1.67	0.65	1.63
30 mm	D074430	15.51	2.30	0.50	1.67	0.65	1.63
32 mm	D074432	16.89	2.56	0.53	1.80	0.71	1.94

\* Meets A.N.S.I. standards

# Wrenches

## 8 Piece SAE Reversible Combination Ratcheting Wrench Set (15° Offset)

Part No. D076601

**Set Content:**

8 Ratcheting Wrenches: 5/16", 3/8", 7/16", 1/2", 9/16", 5/8", 11/16", 3/4"



Includes Canvas Roll.

## 12 Piece Metric Reversible Combination Ratcheting Wrench Set (15° Offset)

Part No. D076603

**Set Content:**

12 Ratcheting Wrenches: 8, 9, 10, 11, 12, 13, 14, 15, 16, 17, 18, 19mm



Includes Canvas Roll.

# Wrenches

## 8 Piece SAE Stubby Flex Head Combination Ratcheting Wrench Set

Part No. D076607

**Set Content:**  
8 Stubby Ratcheting Wrenches: 5/16", 3/8", 7/16", 1/2",  
9/16", 5/8", 11/16", 3/4"



Includes Zipper Case.

## 12 Piece Metric Stubby Flex Head Combination Ratcheting Wrench Set

Part No. D076608

**Set Content:**  
12 Stubby Ratcheting Wrenches: 8, 9, 10,  
11, 12, 13, 14, 15, 16, 17, 18, 19mm



Includes Zipper Case.

# Wrenches



## SAE Reversible Combination Ratcheting Wrenches (15° Offset)

Size	Part No.	Overall Length inches	Head Width inches	Head Thickness inches	Box End Width inches	Box End Thickness inches	Net Weight (lbs)
5/16"	D076010	5.31	0.73	0.20	0.70	0.30	0.07
3/8"	D076012	6.22	0.85	0.23	0.83	0.32	0.12
7/16"	D076014	6.57	0.95	0.23	0.89	0.32	0.15
1/2"	D076016	7.05	1.06	0.26	1.02	0.35	0.21
9/16"	D076018	7.44	1.23	0.30	1.09	0.37	0.26
5/8"	D076020	8.46	1.37	0.31	1.26	0.39	0.35
11/16"	D076022	9.13	1.50	0.31	1.34	0.42	0.40
3/4"	D076024	9.72	1.62	0.35	1.38	0.44	0.55

\* Meets A.N.S.I. standards



## Metric Reversible Combination Ratcheting Wrenches (15° Offset)

Size	Part No.	Overall Length inches	Head Width inches	Head Thickness inches	Box End Width inches	Box End Thickness inches	Net Weight (lbs)
8 mm	D076108	5.31	0.73	0.20	0.70	0.30	0.07
9 mm	D076109	5.59	0.76	0.21	0.75	0.30	0.09
10 mm	D076110	6.22	0.85	0.23	0.83	0.32	0.12
11 mm	D076111	6.57	0.95	0.23	0.89	0.32	0.15
12 mm	D076112	6.81	1.04	0.24	0.94	0.35	0.17
13 mm	D076113	7.05	1.06	0.26	1.02	0.35	0.21
14 mm	D076114	7.44	1.23	0.30	1.09	0.37	0.26
15 mm	D076115	7.83	1.32	0.31	1.15	0.37	0.30
16 mm	D076116	8.46	1.35	0.31	1.25	0.39	0.35
17 mm	D076117	9.13	1.50	0.31	1.34	0.42	0.40
18 mm	D076118	9.37	1.56	0.33	1.34	0.43	0.44
19 mm	D076119	9.72	1.62	0.35	1.38	0.44	0.55

\* Meets A.N.S.I. standards



## SAE Stubby Flex Head Ratcheting Wrenches

Size	Part No.	Overall Length inches	Head Width inches	Head Thickness inches	Box End Width inches	Box End Thickness inches	Net Weight (lbs)
5/16"	D076210	3.66	0.66	0.19	0.67	0.29	0.05
3/8"	D076212	3.76	0.83	0.22	0.82	0.29	0.08
7/16"	D076214	4.13	0.98	0.24	0.93	0.34	0.12
1/2"	D076216	4.19	1.08	0.24	0.97	0.34	0.13
9/16"	D076218	4.53	1.14	0.28	1.05	0.34	0.16
5/8"	D076220	4.80	1.30	0.30	1.17	0.41	0.21
11/16"	D076222	4.94	1.37	0.32	1.24	0.41	0.25
3/4"	D076224	5.43	1.53	0.35	1.34	0.42	0.33

\* Meets A.N.S.I. standards



## Metric Stubby Flex Head Ratcheting Wrenches

Size	Part No.	Overall Length inches	Head Width inches	Head Thickness inches	Box End Width inches	Box End Thickness inches	Net Weight (lbs)
8 mm	D076308	3.66	0.66	0.19	0.67	0.29	0.05
9 mm	D076309	3.76	0.83	0.22	0.82	0.29	0.08
10 mm	D076310	3.76	0.83	0.22	0.82	0.29	0.08
11 mm	D076311	4.13	0.98	0.24	0.93	0.34	0.12
12 mm	D076312	4.13	0.98	0.24	0.93	0.34	0.12
13 mm	D076313	4.19	1.08	0.24	0.97	0.34	0.13
14 mm	D076314	4.53	1.14	0.28	1.05	0.34	0.16
15 mm	D076315	4.80	1.30	0.30	1.17	0.41	0.22
16 mm	D076316	4.80	1.30	0.30	1.17	0.41	0.22
17 mm	D076317	4.94	1.37	0.32	1.24	0.41	0.25
18 mm	D076318	5.43	1.53	0.35	1.34	0.42	0.33
19 mm	D076319	5.43	1.53	0.35	1.34	0.42	0.35

\* Meets A.N.S.I. standards

# Wrenches



## Adjustable Wrenches

Size	Part No.	Max. Jaw Opening (inches)	Net Weight (lbs)
4"	D072004	0.6	0.12
6"	D072006	0.8	0.30
8"	D072008	1.0	0.52
10"	D072010	1.2	0.96
12"	D072012	1.4	1.43
15"	D072015	1.7	2.80
18"	D072018	2.1	4.11

\* Meets A.N.S.I. standards



## Aluminum Pipe Wrenches

Size	Part No.	Max. Jaw Opening (inches)	Net Weight (lbs)
14"	D080014	2	2.02
18"	D080018	2.5	3.35
24"	D080024	3	5.42
36"	D080036	5	10.40
48"	D080048	6	18.07

\* Meets A.N.S.I. standards

# Wrenches



## Torque Wrenches

Part No.	Square Drive		Capacity		Increments		Head Style	No. of Teeth	Length
	Imperial		Imperial	Nm	Imperial	Nm			
D086000	1/4"	30 - 150 (in-lb)	4-16.4	1 (in-lb)	0.11	Fixed	64	8"	
D086001	3/8"	20-100 (ft-lb)	33.9-128.8	1 (ft-lb)	1.4	Fixed	32	17"	
D086002	1/2"	30-250 (ft-lb)	48-332	1 (ft-lb)	1.4	Fixed	32	24"	
D086003	3/4"	100-600 (ft-lb)	170-780	5 (ft-lb)	6.8	Fixed	24	49"	

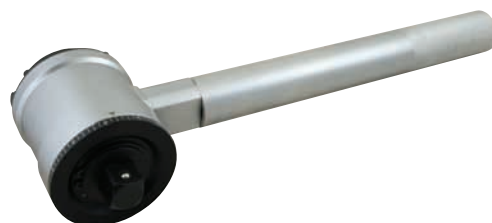
- Each torque wrench is factory calibrated within tolerance limits of +4% clockwise
- Factory certificate of calibration included
- Quick release mechanism makes socket removal easy
- Lock ring prevents accidental change of torque setting
- Durable aluminum handle features an easy to grip diamond knurl surface
- Dual scale SAE/Metric
- Blow molded plastic case for convenient storage



## Torque Multiplier (1/2"F-3/4"M)

Includes blow mold case.

Part No.	Input Drive	Output Drive	Maximum Input Torque		Maximum Output Torque		Torque Ratio	Length in.	Weight with case lbs.	Accuracy	Overload Protection	Anti Backlash
			ft. lb.	(Nm)	ft. lb.	(Nm)						
D086101	1/2" F	3/4" M	220	300	1100	1500	5:1	6.37	16.10	+/-5%	No	No



## Torque Multiplier (1/2"F-1"M)

Includes blow mold case.

Part No.	Input Drive	Output Drive	Maximum Input Torque		Maximum Output Torque		Torque Ratio	Length in.	Weight with case lbs.	Accuracy	Overload Protection	Anti Backlash
			ft. lb.	(Nm)	ft. lb.	(Nm)						
D086102	1/2" F	1" M	126	173	3300	4500	26:1	9.25	34.66	+/-5%	No	Yes

### Calibration Certificates

For ISO 9000 and QS 9000 customers, calibration certificates are available for an additional charge. To order tools with the third party calibration certificate simply add "-C" to any of the part numbers seen on page 89.

# Hex Keys



## **Rust-Protection**

All hex keys feature a corrosion resistant surface.

## **Long-Lasting**

During the manufacturing process the hex keys are specially heat-treated for increased durability.

## **Superior Manufacturing**

Precision machined tip to avoid slippage and stripping of fasteners.

# Hex Keys



## 13 Piece SAE Ball End Long Hex Key Set

Part No. D043201

### Set Content:

3/64", 1/16", 5/64", 3/32", 7/64", 1/8", 9/64", 5/32", 3/16", 7/32", 1/4", 5/16", 3/8"



## 9 Piece Metric Ball End Long Hex Key Set

Part No. D043202

### Set Content:

1.5, 2, 2.5, 3, 4, 5, 6, 8, 10 mm



## 13 Piece SAE Hex Key Set

Part No. D043203

### Set Content:

3/64", 1/16", 5/64", 3/32", 7/64", 1/8", 9/64", 5/32", 3/16", 7/32", 1/4", 5/16", 3/8"



## 9 Piece Metric Hex Key Set

Part No. D043204

### Set Content:

1.5, 2, 2.5, 3, 4, 5, 6, 8, 10 mm



## 9 Piece Torx® Hex Key Set

Part No. D043205

### Set Content:

T10, T15, T20, T25, T27, T30, T40, T45, T50



## 30 Piece SAE & Metric Hex Key Set

Part No. D043206

**Set Content:**

Regular Metric: 0.7, 0.9, 1.3, 1.5, 2, 2.5, 3, 4, 4.5, 5, 5.5, 6, 7, 8, 10mm

Long SAE: 0.028", 0.035", 0.05", 1/16", 5/64", 3/32", 7/64", 1/8", 9/64", 5/32", 3/16", 7/32", 1/4", 5/16", 3/8"



## 9 Piece SAE Folding Hex Key Set

Part No. D043207

**Set Content:**

5/64", 3/32", 7/64", 1/8", 9/64", 5/32", 3/16", 7/32", 1/4"



## 7 Piece Metric Folding Hex Key Set

Part No. D043208

**Set Content:**

1.5, 2, 2.5, 3, 4, 5, 6 mm



## 8 Piece Torx® Folding Hex Key Set

Part No. D043209

**Set Content:**

T8, T10, T15, T20, T25, T27, T30, T40



# Hex Keys



## 8 Piece Metric Loop Handle Hex Key Set

Part No. D043320

**Set Content:**  
2, 2.5, 3, 4, 5, 6, 8, 10mm



## 8 Piece SAE Loop Handle Hex Key Set

Part No. D043420

**Set Content:**  
5/64", 3/32", 1/8", 5/32", 3/16", 1/4", 5/16", 3/8"

## SAE Individual Loop Handle Hex Keys



Part No.	Size	Blade Length (inches)	Overall Length (inches)	Handle Width (inches)	Weight (lbs)
D043401	5/64"	9	9.75	3.15	0.02
D043402	3/32"	9	9.75	3.15	0.04
D043404	1/8"	9	9.75	3.15	0.08
D043406	5/32"	9	9.75	3.15	0.13
D043407	3/16"	9	10	3.74	0.17
D043409	1/4"	9	10	3.74	0.23
D043410	5/16"	9	10.5	4.13	0.35
D043411	3/8"	9	10.5	4.13	0.55

## Metric Individual Loop Handle Hex Keys



Part No.	Size	Blade Length (inches)	Overall Length (inches)	Handle Width (inches)	Weight (lbs)
D043301	2mm	9	9.75	3.15	0.02
D043302	2.5mm	9	9.75	3.15	0.04
D043303	3mm	9	9.75	3.15	0.08
D043305	4mm	9	9.75	3.15	0.13
D043307	5mm	9	10	3.74	0.17
D043309	6mm	9	10	3.74	0.23
D043310	8mm	9	10.5	4.13	0.35
D043311	10mm	9	10.5	4.13	0.55

# Screwdrivers



## **User-Friendly Design**

Screwdrivers are offered in a choice of acetate and comfort grip handles.

## **Improved Visibility**

Bright orange handle colour allows for easy tool retrieval.

## **Professional Grade**

All screwdrivers meet ANSI standards.

# Screwdrivers

## 36 Piece Screwdriver & Bit Set

Part No. D062505



### Set Content:

4 Phillips®: #0, #1, #2, #3

1 Phillips® Stubby: #2

5 Slotted: 5/32", 3/16", 1/4", 5/16", 3/8"

1 Slotted Stubby: 1/4"

4 Square Recess: #0, #1, #2, #3

2 Square Recess Stubby: #1, #2

1 Offset Phillips®: #1, #2

1 Offset Slotted: 3/16", 1/4"

1 Offset Square Recess: #1, #2

Circuit Tester (110V only)

Magnetic Bit Holder

Torx® Bits: T10, T15, T20, T25, T27, T30, T40

Hex Bits: 2, 2.5, 3, 4, 5, 6, 8 mm



Includes Blow Mold Case.

## 9 Piece Screwdriver Set-Comfort Handle

Part No. D062500



### Set Content:

5 Slotted: 1/8", 5/32", 1/4", 5/16", 3/8"

2 Phillips®: #1, #2

2 Square Recess: #1, #2

Includes Plastic Tray.

## 13 Piece Ratcheting Screwdriver Set

Part No. D062508



**Set Content:**

Ratcheting screwdriver handle

Phillips® bits: 0, 1, 2, 3

Square bits: 0, 1, 2, 3

Slotted bits: 3.5, 4.5, 5.5, 6.5

## 21 Piece Screwdriver Set - with Removable Bits

Part No. D062506



**Set Content:**

Comfort Grip Handle (1/4" Hex)

**Screwdriver Bits (3" Length):**

Torx®: T10, T15, T20, T25, T30

Square Recess: #0, #1, #2, #3

Slotted: 1/8", 5/32", 3/16"

Phillips®: #0, #1, #2, #3

**Screwdriver Bits (2" Length):**

Phillips® (2" length): #1, #2 (2), #3

Includes Canvas Pouch.

# Screwdrivers

## Phillips® Screwdrivers Comfort Handle

Part No.	Tip Size	Blade Length (inches)	Overall Length (inches)	Shank Size (inches)	Weight (lbs)
D062101	#1	2.95	6.89	0.20	0.13
D062102	#2	3.94	8.39	0.24	0.21
D062103	#3	5.91	10.67	0.31	0.35

\* Meets A.N.S.I. standards



## Phillips® Stubby Screwdrivers Comfort Handle

Part No.	Tip Size	Blade Length (inches)	Overall Length (inches)	Shank Size (inches)	Weight (lbs)
D062104	#1	1.50	3.80	0.20	0.09
D062105	#2	1.50	3.80	0.24	0.10

\* Meets A.N.S.I. standards



## Square Recess Screwdrivers Comfort Handle

Part No.	Tip Size	Blade Length (inches)	Overall Length (inches)	Shank Size (inches)	Weight (lbs)
D062201	#0	2.95	7.40	0.24	0.15
D062202	#1	3.94	8.39	0.24	0.21
D062203	#2	3.94	8.39	0.24	0.21
D062204	#3	4.92	9.37	0.24	0.23

\* Meets A.N.S.I. standards



## Square Recess Stubby Screwdrivers Comfort Handle

Part No.	Tip Size	Blade Length (inches)	Overall Length (inches)	Shank Size (inches)	Weight (lbs)
D062205	#1	1.50	3.80	0.24	0.09
D062206	#2	1.50	3.80	0.24	0.10

\* Meets A.N.S.I. standards



## Slotted Screwdrivers Comfort Handle

Part No.	Tip Size	Blade Length (inches)	Overall Length (inches)	Shank Size (inches)	Weight (lbs)
D062001	1/8"	2.95	6.02	0.12	0.07
D062002	5/32"	2.95	6.02	0.12	0.07
D062003	3/16"	3.94	7.87	0.16	0.12
D062004	1/4"	4.92	9.37	0.24	0.23
D062005	5/16"	5.91	10.67	0.31	0.34
D062006	3/8"	7.87	12.64	0.39	0.50

\* Meets A.N.S.I. standards



## Slotted Stubby Screwdrivers Comfort Handle

Part No.	Tip Size	Blade Length (inches)	Overall Length (inches)	Shank Size (inches)	Weight (lbs)
D062007	1/4"	1.50	3.80	0.24	0.10

\* Meets A.N.S.I. standards



## 7 Piece SAE Nut Driver Set Acetate Handle

Part No. D062503



**Set Content:**  
7 SAE Nut Drivers: 3/16", 1/4", 5/16", 11/32", 3/8", 7/16", 1/2"  
Includes Plastic Tray.

## 7 Piece Metric Nut Driver Set Acetate Handle

Part No. D062504

**Set Content:**  
7 Metric Nut Drivers: 5, 6, 7, 8, 9, 10, 11mm  
Includes Plastic Tray.



### SAE Nut Drivers-Acetate Handle

Part No.	Tip Size	Blade Length (inches)	Overall Length (inches)	Shank Size (inches)	Weight (lbs)
D062401	3/16"	3	6.75	0.24	0.16
D062402	1/4"	3	6.75	0.24	0.16
D062403	5/16"	3	6.75	0.31	0.19
D062404	11/32"	3	6.75	0.31	0.19
D062405	3/8"	3	6.75	0.31	0.20
D062406	7/16"	3	6.75	0.43	0.26
D062407	1/2"	3	6.75	0.43	0.27

\* Meets A.N.S.I. standards



### Metric Nut Drivers-Acetate Handle

Part No.	Tip Size	Blade Length (inches)	Overall Length (inches)	Shank Size (inches)	Weight (lbs)
D062408	5 mm	3	6.75	0.24	0.16
D062409	6 mm	3	6.75	0.24	0.16
D062410	7 mm	3	6.75	0.31	0.19
D062411	8 mm	3	6.75	0.31	0.19
D062412	9 mm	3	6.75	0.31	0.20
D062413	10 mm	3	6.75	0.43	0.26
D062414	11 mm	3	6.75	0.43	0.26

\* Meets A.N.S.I. standards

# Screwdrivers

## 7 Piece Precision Screwdriver Set

Part No. D062509



**Set Content:**

4 Slotted Screwdrivers: 1/8", 3/16", 1/4", 5/16"

3 Phillips® Screwdrivers: #000, #00, #0

### Precision Screwdrivers - Slotted

Part No.	Tip Size	Blade Length (inches)	Overall Length (inches)	Shank Size (inches)	Weight (lbs)
D062801	1/8"	2.36	6.00	0.12	0.02
D062802	3/16"	2.36	6.00	0.12	0.03
D062803	1/4"	2.90	6.50	0.16	0.03
D062804	5/16"	2.90	6.50	0.24	0.03



### Precision Screwdrivers - Phillips®

Part No.	Tip Size	Blade Length (inches)	Overall Length (inches)	Shank Size (inches)	Weight (lbs)
D062805	#000	2.36	6.00	0.08	0.03
D062806	#00	2.36	6.00	0.08	0.03
D062807	#0	2.90	6.50	0.10	0.03





# Electrical Tools



## **Guaranteed Protection**

All electrical tools with insulated handles are 1000 V certified to IEC 60900:2004.

## **User-Friendly Design**

Comfort grip handles for easy operation and secure non-slip grip.

## **Peace of Mind**

All electrical tools are backed by a lifetime warranty.

# Screwdrivers

## 6 Piece Insulated Screwdriver Set

Part No. D062720



**Set Content:**  
 2 Phillips®: #1, #2  
 4 Slotted: 1/8", 5/32", 7/32", 1/4"  
 Includes Plastic Tray.

## Slotted Insulated Screwdrivers



Part No.	Tip Size	Blade Length (inches)	Overall Length (inches)	Shank Size (inches)	Weight (lbs)
D062701	1/8"	3.93	7.50	1.00	0.08
D062702	5/32"	3.93	8.00	1.18	0.12
D062703	7/32"	4.98	9.00	1.18	0.16
D062704	1/4"	5.93	10.50	1.37	0.25

\* Meets A.N.S.I. standards

## Phillips® Insulated Screwdrivers



Part No.	Tip Size	Blade Length (inches)	Overall Length (inches)	Shank Size (inches)	Weight (lbs)
D062705	No 1	3.20	7.25	1.17	0.13
D062706	No 2	4.00	8.50	1.39	0.21

\* Meets A.N.S.I. standards

## 4 Piece Plier Set-Insulated Handles

Part No. D055210



**Set Content:**

8" Linesman Pliers, 8" Diagonal Cutting Pliers, 8" Long Nose Pliers, 10" Box Joint Water Pump Pliers  
Includes Plastic Tray.

## Linesman Pliers-Insulated Handles

Part No.	Overall Length	Jaw Length (inches)	Jaw Thickness (inches)	Weight (lbs)
D055100	7"	1.42	0.24	0.64
D055101	8"	1.65	0.30	0.90

\* Meets A.N.S.I. standards



## Diagonal Cutting Pliers-Insulated Handles

Part No.	Overall Length	Jaw Length (inches)	Jaw Thickness (inches)	Weight (lbs)
D055102	6"	0.79	0.43	0.45
D055103	8"	0.87	0.43	0.64

\* Meets A.N.S.I. standards



# Pliers



## Long Nose Pliers-Insulated Handles

Part No.	Overall Length	Jaw Length (inches)	Jaw Thickness (inches)	Weight (lbs)
D055104	6"	2.09	0.12	0.37
D055105	8"	2.87	0.17	0.55

\* Meets A.N.S.I. standards



## Bent Nose Pliers-Insulated Handles

Part No.	Overall Length	Jaw Length (inches)	Jaw Thickness (inches)	Weight (lbs)
D055106	6"	1.69	0.12	0.37
D055107	8"	2.72	0.17	0.55

\* Meets A.N.S.I. standards



## Wire Stripping Pliers-Insulated Handles

Part No.	Overall Length	Jaw Length (inches)	Jaw Thickness (inches)	Weight (lbs)
D055108	6"	1.44	0.37	0.45

\* Meets A.N.S.I. standards



## Box Joint Water Pump Pliers-Insulated Handles

Part No.	Overall Length	Jaw Length (inches)	Jaw Thickness (inches)	Weight (lbs)
D055109	10"	1.44	0.39	0.93

\* Meets A.N.S.I. standards

## Wire Stripper/Cutter-Comfort Handle

Part No.	Overall Length	Jaw Length (inches)	Jaw Thickness (inches)	Weight (lbs)
D095001	6"	0.79	0.43	0.45

\* Meets A.N.S.I. standards

- Strips 8-20 AWG solid wire and 10-22 AWG stranded wire
- Serrated jaws to pull, bend and loop wire



**WARNING:** Handles are not insulated and not designed to protect the user against electrical shock

## Self-Adjusting Wire Stripper

Part No.	Overall Length	Jaw Length (inches)	Jaw Thickness (inches)	Weight (lbs)
D095002	8"	0.79	0.43	0.45

\* Meets A.N.S.I. standards

- Quickly strips 10-24 AWG wire
- Handle mounted crimper and cutter



**WARNING:** Handles are not insulated and not designed to protect the user against electrical shock

## Wire Stripper/Cutter-Comfort Handle

Part No.	Overall Length	Jaw Length (inches)	Jaw Thickness (inches)	Weight (lbs)
D095001	6"	0.79	0.43	0.45

\* Meets A.N.S.I. standards

- Strips 8-20 AWG solid wire and 10-22 AWG stranded wire
- Serrated jaws to pull, bend and loop wire



**WARNING:** Handles are not insulated and not designed to protect the user against electrical shock

## Self-Adjusting Wire Stripper

Part No.	Overall Length	Jaw Length (inches)	Jaw Thickness (inches)	Weight (lbs)
D095002	8"	0.79	0.43	0.45

\* Meets A.N.S.I. standards

- Quickly strips 10-24 AWG wire
- Handle mounted crimper and cutter



**WARNING:** Handles are not insulated and not designed to protect the user against electrical shock

# Pliers Pliers



## **User-Friendly Design**

Comfort grip handles for easy operation and secure non-slip grip.

## **Improved Visibility**

Bright orange handle colour allows for easy tool retrieval.

## **Professional Grade**

All pliers meet ANSI standards.

## 4 Piece Plier Set-Comfort Handles

Part No. D055200



**Set Content:**

7" Linesman Pliers, 6" Diagonal Cutting Pliers, 6" Long Nose Pliers, 10" Groove Joint Pliers  
Includes Plastic Tray.

---

## 5 Piece Plier Set-Comfort Handles

Part No. D055201



**Set Content:**

8" Linesman Pliers, 7" Diagonal Cutting Pliers, 8" Long Nose Pliers, 8" Bent Nose Pliers, 8" Slip Joint Pliers  
Includes Plastic Tray.

---



# Pliers Pliers

## 3 Piece High Leverage Pliers Set

Part No. D055530



\* Less effort required to make cuts versus ordinary pliers.

### Set Content:

8" Linesman Pliers, 7" Diagonal Cutting Pliers, 8" Long Nose Pliers  
Includes Plastic Tray.

## Diagonal Cutting Pliers-Comfort Handles

Part No.	Overall Length	Jaw Length (inches)	Jaw Thickness (inches)	Weight (lbs)
D055038	6"	1.00	0.43	0.55
D055000	7"	1.00	0.43	0.60
D055500**	7"	1.00	0.43	0.75

\* Meets A.N.S.I. standards

\*\* High leverage design



## Long Nose Pliers- Comfort Handles

Part No.	Overall Length	Jaw Length (inches)	Jaw Thickness (inches)	Weight (lbs)
D055001	6"	1.93	0.35	0.35
D055002	8"	2.99	0.37	0.50
D055502**	8"	2.60	0.37	0.60
D055003	11"	3.23	0.39	0.65

\* Meets A.N.S.I. standards

\*\* High leverage design



## Bent Nose Pliers-Comfort Handles

Part No.	Overall Length	Jaw Length (inches)	Jaw Thickness (inches)	Weight (lbs)
D055004	6"	1.73	0.35	0.35
D055005	8"	2.85	0.37	0.50
D055006	11"	2.80	0.39	0.65

\* Meets A.N.S.I. standards





## Linesman Pliers-Comfort Handles

Part No.	Overall Length	Jaw Length (inches)	Jaw Thickness (inches)	Weight (lbs)
D055013	7"	1.50	0.39	0.60
D055014	8"	1.61	0.43	0.75
D05514**	8"	1.61	0.43	0.80

\* Meets A.N.S.I. standards

\*\* High leverage design



## Slip Joint Pliers-Comfort Handles

Part No.	Overall Length	Jaw Length (inches)	Jaw Thickness (inches)	Weight (lbs)
D055007	6"	1.59	0.39	0.45
D055008	8"	2.05	0.41	0.60
D055009	10"	2.24	0.46	0.80

\* Meets A.N.S.I. standards



## Groove Joint Pliers-Comfort Handles

Part No.	Overall Length	Jaw Length (inches)	Jaw Thickness (inches)	Weight (lbs)
D055010	7 1/2"	1.69	0.39	0.60
D055011	9 1/2"	2.03	0.44	0.80
D055012	12"	2.50	0.47	1.00

\* Meets A.N.S.I. standards

# Pliers

## Cable Cutter

Part No.	Overall Length	Weight (lbs)
D055036	10"	1.0

\* Meets A.N.S.I. standards



## End Cutter

Part No.	Overall Length	Weight (lbs)
D055037	8"	0.75

\* Meets A.N.S.I. standards



## Tin Snips

Part No.	Overall Length	Jaw Length (inches)	Weight (lbs)
D055031	7"	1.77	0.60
D055032	10"	1.77	0.80
D055033	12"	1.77	1.00



## Compound Tin Snips-Straight

Part No.	Overall Length	Weight (lbs)
D055034	8"	1.00
D055035	11"	1.15



## 3 Piece Aviation Snips Set

Part No. D055205



**Set Content:**

**Aviation Snip-Right Hand, Aviation Snip-Straight, Aviation Snip-Left Hand**



### Aviation Snips-Right Hand

Part No.	Overall Length	Cut (inches)	Cuts	Grip Colour	Weight (lbs)
D055028	10"	1.70	Right	Green	0.84

\* Meets A.N.S.I. standards



### Aviation Snips-Straight

Part No.	Overall Length	Cut (inches)	Cuts	Grip Colour	Weight (lbs)
D055029	10"	1.70	Straight	Yellow	0.84

\* Meets A.N.S.I. standards



### Aviation Snips-Left Hand

Part No.	Overall Length	Cut (inches)	Cuts	Grip Colour	Weight (lbs)
D055030	10"	1.70	Left	Red	0.84

\* Meets A.N.S.I. standards

# Pliers Pliers

## 5 piece Locking Plier Set

Part No. D055316



### Set Content:

- 10" locking plier - straight jaws
- 10" locking plier - curved jaws
- 7" locking plier - curved jaws with wire cutter
- 6" locking plier - long nose
- 5" locking plier - curved jaws with wire cutter



Includes Canvas Roll.

## Locking Pliers - Curved Jaws

- The narrow, large opening curved jaws provide firm grip on all round shapes

Part No.	Overall Length	Jaw Opening (inches)	Weight (lbs)
D055304	7"	1.50	0.75
D055305	10"	1.88	1.17



## Locking Pliers - Curved Jaws with Wire Cutter

- The functionality of regular curved jaws with added convenience of a wire cutter

Part No.	Overall Length	Jaw Opening (inches)	Weight (lbs)
D055301	5"	1.13	0.40
D055302	7"	1.50	0.75
D055303	10"	1.88	1.17



## Locking Pliers - Straight Jaws

- Straight jaws provide firm grip on all flat shapes

Part No.	Overall Length	Jaw Opening (inches)	Weight (lbs)
D055306	7"	1.18	0.79
D055307	10"	1.88	1.21



## Locking Pliers - Long Nose

- Long slim jaw design is helpful when holding, placing or extracting pieces in recessed spaces

Part No.	Overall Length	Jaw Opening (inches)	Weight (lbs)
D055312	6"	1.13	0.42
D055313	9"	2.25	0.82





## Locking Clamp - Swivel Pads

- Two knurled swivel pads allow a non-slip parallel clamping on tapered surfaces without any damage to the piece

Part No.	Overall Length	Jaw Opening (inches)	Weight (lbs)
D055308	6"	2.00	0.57
D055309	11"	3.37	1.70



## Locking Clamp

- Wide jaw profile provides great versatility in clamping large objects

Part No.	Overall Length	Jaw Opening (inches)	Weight (lbs)
D055310	11"	3.37	1.59



## Locking Chain Clamp

- Flexible heavy duty chain adjusts quickly around any shape providing a secure hold even in hard to reach areas

Part No.	Overall Length	Jaw Opening (inches)	Weight (lbs)
D055311	9"	-	1.57
D055401	Replacement chain for D055311		



## Locking Welding Clamp

- Holds two sections together with a firm grip

Part No.	Overall Length	Jaw Opening (inches)	Weight (lbs)
D055314	9"	2.00	1.48



## Locking Wrench Tool

- Jaw design ensure secure grip onto three sides of the fastener

Part No.	Overall Length	Jaw Opening (inches)	Weight (lbs)
D055315	7"	-	1.28

# Punches & Chisels



## **Complete Assortment**

A variety of punches and chisels to meet any job requirements.

## **Durable Construction**

Special heat treatment ensures improved durability.

## **Professional Grade**

All punches and chisels meet ANSI standards.

### 8 Piece Chisel Set

Part No. D058201



**Set Content:**

8 Cold Chisels: 1/4", 5/16", 3/8", 1/2", 5/8", 3/4", 7/8", 1"

Includes Canvas Roll.

### 7 Piece Pin Punch Set

Part No. D058200



**Set Content:**

7 Pin Punches: 1/16", 3/32", 1/8", 5/32", 3/16", 1/4", 5/16"

Includes Canvas Roll.



# Punches & Chisels

## 8 Piece Punch And Chisel Set

Part No. D058202



**Set Content:**

3 Cold Chisels: 1/2", 5/8", 3/4"

Centre Punch: 5/32"

Solid Punch: 3/16"

3 Pin Punches: 1/8", 3/16", 1/4"



Includes Canvas Roll.

## 16 Piece Punch And Chisel Set

Part No. D058203



**Set Content:**

5 Cold Chisels: 5/16", 1/2", 5/8", 3/4", 7/8"

3 Centre Punches: 1/8", 5/32", 1/4"

3 Solid Punches: 1/8", 3/16", 1/4"

2 Drift Punches: 3/16", 1/4"

3 Pin Punches: 1/8", 3/16", 1/4"



Includes Canvas Roll.

## Automatic Centre Punch

Part No.	Overall Length (inches)	Weight (lbs)
D058030	4.90	0.12

\* Meets A.N.S.I. standards

## Pin Punch

Part No.	Pin Diameter (inches)	Body (inches)	Length (inches)	Weight (lbs)
D058001	1/16	1/4	4	0.05
D058002	3/32	1/4	4-1/4	0.05
D058003	1/8	5/16	4-3/4	0.05
D058004	5/32	5/16	5	0.10
D058005	3/16	5/16	5-1/4	0.10
D058006	1/4	3/8	5-3/4	0.15
D058007	5/16	7/16	6	0.20

\* Meets A.N.S.I. standards

## Drift Punch

Part No.	Pin Diameter (inches)	Body (inches)	Length (inches)	Weight (lbs)
D058008	1/8	5/16	8	0.15
D058009	5/32	3/8	9	0.20
D058010	3/16	5/16	10	0.20
D058011	1/4	3/8	10	0.25

\* Meets A.N.S.I. standards

## Solid Punch

Part No.	Pin Diameter (inches)	Body (inches)	Length (inches)	Weight (lbs)
D058012	1/16	3/8	5	0.10
D058013	1/8	5/16	5	0.10
D058014	5/32	3/8	5	0.15
D058015	3/16	3/8	5	0.15
D058016	1/4	1/2	5	0.25
D058017	5/16	1/2	6	0.30

\* Meets A.N.S.I. standards

## Centre Punch

Part No.	Pin Diameter (inches)	Body (inches)	Length (inches)	Weight (lbs)
D058018	5/64	1/4	3-1/2	0.05
D058019	1/8	5/16	4-1/2	0.10
D058020	5/32	5/16	5-1/2	0.10
D058021	1/4	3/8	6	0.20

\* Meets A.N.S.I. standards

## Cold Chisel

Part No.	Width of Cut (inches)	Body (inches)	Length (inches)	Weight (lbs)
D058101	1/4	1/4	5	0.05
D058102	5/16	1/4	5	0.05
D058103	3/8	5/16	5-1/2	0.10
D058104	1/2	7/16	6	0.25
D058105	5/8	1/2	6-1/2	0.35
D058106	3/4	5/8	7	0.60
D058107	7/8	5/8	8	0.70
D058108	1	3/4	8-1/2	1.05
D058109	1	3/4	10	1.25
D058110	1	3/4	12	1.50

\* Meets A.N.S.I. standards

# Clamping & Extracting



## **Complete Assortment**

A variety of clamping and pulling tools to meet any job requirements.

## **Durable Construction**

Special heat treatment process ensures years of continuous service.

## C-Clamps



- Drop forged steel construction for maximum clamping power
- High strength ACME screw with black oxide plating for corrosion resistance

Part No.	Opening Capacity	Throat Depth	Spindle Diameter	Max. Clamping Power (lbs)	Weight (lbs)
D090001	0-2"	2 1/4"	15/32"	2700	1.4
D090002	0-3"	2 1/2"	45/64"	3000	2.5
D090003	0-4"	3 1/4"	45/64"	3700	3.6
D090004	0-6"	4 1/8"	45/64"	4500	4.6
D090005	0-8"	5"	45/64"	5200	7.9
D090006	0-10"	6"	15/16"	6000	11.8
D090007	0-12"	6 5/16"	15/16"	8000	14.5



## Self-Adjusting Pullers

- Spring-loaded jaws for quick and easy set-up for different applications
- Two or three jaw design for added flexibility
- Solid Chrome-Vanadium forged construction for increased durability
- Heavy duty forcing screw with live center for strong even pulls

Part No.	Pulling Capacity	Maximum Reach	Maximum Spread	Weight (lbs)
D093001	2 tons	3 1/2"	4"	2.96
D093002	5 tons	5 1/4"	7"	6.25

# Striking Tools



## **Complete Assortment**

A variety of hammers and pry bars to meet any job requirements.

## **User-Friendly Design**

Hammers are offered in a choice of Fiberglass and Hickory handles.

## **Professional Grade**

All hammers and pry bars meet ANSI standards.

# Hammers



## Claw Hammer-Hickory Handle

Part No.	Head Weight	Head Diameter (inches)	Head Length (inches)	Overall Length (inches)
D041010	16 oz.	1.09	5.07	12.83

\* Meets A.N.S.I. standards



## Claw Hammer-Fiberglass Handle

Part No.	Head Weight	Head Diameter (inches)	Head Length (inches)	Overall Length (inches)
D041011	16 oz.	1.09	5.07	12.95

\* Meets A.N.S.I. standards



## Ball Pein Hammers-Hickory Handle

Part No.	Head Weight	Head Diameter (inches)	Head Length (inches)	Overall Length (inches)
D041025	8 oz.	0.92	3.22	11.70
D041027	16 oz.	1.19	3.94	13.65
D041028	24 oz.	1.38	4.64	15.44
D041029	32 oz.	1.50	4.91	15.60

\* Meets A.N.S.I. standards



## Ball Pein Hammers-Fiberglass Handle

Part No.	Head Weight	Head Diameter (inches)	Head Length (inches)	Overall Length (inches)
D041020	8 oz.	0.90	3.24	10.82
D041022	16 oz.	1.17	3.90	12.73
D041023	24 oz.	1.37	4.60	15.02
D041024	32 oz.	1.52	4.88	15.07

\* Meets A.N.S.I. standards

# Hammers

## Sledge Hammers-Fiberglass Handle

Part No.	Head Weight	Head Diameter (inches)	Head Length (inches)	Overall Length (inches)
D041040	4 lbs.	1.83	5.46	16.19
D041041	6 lbs.	2.11	6.28	35.63
D041042	8 lbs.	2.30	6.86	35.49
D041043	10 lbs.	2.50	7.33	36.02
D041044	12 lbs.	2.61	7.84	36.13
D041045	16 lbs.	2.85	8.74	36.37



## Club Hammers- Fiberglass Handle

Part No.	Head Weight	Head Diameter (inches)	Head Length (inches)	Overall Length (inches)
D041060	2 1/2 lbs.	1.79	3.74	10.49
D041061	4 lbs.	1.99	4.52	10.76

\* Meets A.N.S.I. standards



## Dead Blow Hammers-Fiberglass Handle

Part No.	Head Weight	Head Diameter (inches)	Head Length (inches)	Overall Length (inches)
D041065	1lb.	1.50	3.95	11.40
D041067	2 lbs.	2.00	4.33	13.40
D041069	3 lbs.	2.36	5.11	14.56



# Hammers



## Rubber Mallet-Hickory Handle

Part No.	Head Weight	Head Diameter (inches)	Head Length (inches)	Overall Length (inches)
D041000	1 lb.	2.15	3.71	11.70
D041001	1.5 lbs.	2.42	4.21	12.87



## Soft Face Hammer-Hickory Handle

Part No.	Head Weight	Head Diameter (inches)	Head Length (inches)	Overall Length (inches)
D041151	8 oz.	1.10	3.15	10.55
D041154	14 oz.	1.34	3.94	11.62

## Replacement Tips For Soft Face Hammers

Part No.	Description
D041152	Tip For 8 Oz Soft Face Hammer (D041151)
D041155	Tip For 14 Oz Soft Face Hammer (D041154)



## Bricklayer's Hammer-Hickory Handle

Part No.	Head Weight	Head Diameter (inches)	Head Length (inches)	Overall Length (inches)
D041130	24 oz.	1.33	8.15	11.69

\* Meets A.N.S.I. standards



## Framing Hammer Milled Face-Hickory Handle

Part No.	Head Weight	Head Diameter (inches)	Head Length (inches)	Overall Length (inches)
D041110	25 oz.	1.58	6.21	17.65

\* Meets A.N.S.I. standards



# Prv Bars



## Pinch Bar

Part No.	Length (inches)	Shank Size (inches)	Width of Cut (inches)	Weight (lbs)
D056016	16	0.63	0.98	1.30
D056020	20	0.63	0.98	1.68
D056024	24	0.75	1.17	2.94
D056030	30	0.75	1.17	3.95
D056036	36	0.75	1.17	4.68



## Wonder Bar (Nail Puller)

Part No.	Length (inches)	Width of Cut (inches)	Weight (lbs)
D056113	13	1.85	1.19
D056118	18	1.85	1.56



## Crow Bar-Heavy Duty

Part No.	Length (inches)	Width of Cut (inches)	Weight (lbs)
D056214	54	1.14	14.02
D056218	60	1.26	18.19



## Wrecking Bar

Part No.	Length (inches)	Shank Size (inches)	Width of Cut (inches)	Weight (lbs)
D056312	12	0.55	1.06	0.83
D056318	18	0.63	1.18	1.93
D056324	24	0.75	1.42	3.25
D056330	30	0.75	1.42	3.95
D056336	36	0.75	1.42	4.68
D056342	42	0.75	1.42	5.51

## Flat Files

• For fast removal of metal

Part No.	Length	Cut	Weight (lbs)
D094001	8"	Bastard	0.50
D094002	10"	Bastard	0.81
D094003	12"	Bastard	1.20



## Round Files

• For sharpening round openings or concave surfaces

Part No.	Length	Cut	Weight (lbs)
D094301	8"	Bastard	0.34
D094302	10"	Bastard	0.48
D094303	12"	Bastard	1.12



## Half Round Files

• For concave, convex or flat surfaces

Part No.	Length	Cut	Weight (lbs)
D094101	8"	Bastard	0.48
D094102	10"	Bastard	0.73
D094103	12"	Bastard	0.76



## Mill Files

• For sharpening mill or circular saws

Part No.	Length	Cut	Weight (lbs)
D094201	8"	Bastard	0.40
D094202	10"	Bastard	0.60
D094203	12"	Bastard	0.87
D094211	8"	Smooth	0.43
D094212	10"	Smooth	0.59
D094213	12"	Smooth	0.87



# Replacement Parts



## Ratchet Repair Kits

Part No.	Description
D001208	Repair Kit Assembly for D001301
D001305	Repair Kit Assembly for D001302
D001306RK	Repair Kit Assembly for D001306
D005208	Repair Kit Assembly for D005301
D005305	Repair Kit Assembly for D005302
D005306RK	Repair Kit Assembly for D005306
D005307RK	Repair Kit Assembly for D005307
D005308RK	Repair Kit Assembly for D005308
D012208	Repair Kit Assembly for D012301
D012305	Repair Kit Assembly for D012302
D012308RK	Repair Kit Assembly for D012308
D019208	Repair Kit Assembly for D019301
D024301RK	Repair Kit Assembly for D024301



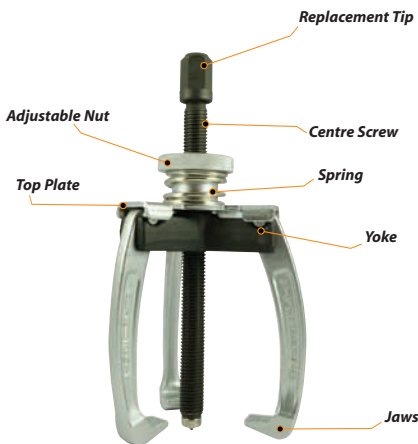
## Flex Handle Repair Kits

Part No.	Description
D001801	Repair Kit Assembly for D001800
D005801	Repair Kit Assembly for D005800
D012801	Repair Kit Assembly for D012800
D012803RK	Repair Kit Assembly for D012803
D019805RK	Repair Kit Assembly for D019805
D027805RK	Repair Kit Assembly for D027800



## Hammer Repair Kits

Part No.	Description
D041153	Handle for D041151 Soft Face Hammer
D041156	Handle for D041154 Soft Face Hammer



## Puller Repair Kits

Part No.	Description
D093001RT	Replacement Tip for D093001
D093101	Top Plate for D093001
D093102	Centre Screw for D093001
D093103	Adjustable Nut for D093001
D093104	Yoke for D093001
D093105	Jaws for D093001
D093106	Spring for D093001
D093002RT	Replacement Tip for D093002
D093107	Top Plate for D093002
D093108	Centre Screw for D093002
D093109	Adjustable Nut for D093002
D093110	Yoke for D093002
D093111	Jaws for D093002
D093112	Spring for D093002



## Wrench Pipe Repair Kits

Part No.	Description
D080014HJ	Hook Jaw - D080014 Pipe Wrench
D080014HP	Pin - D080014 Pipe Wrench
D080014KN	Knurl - D080014 Pipe Wrench
D080018HJ	Hook Jaw - D080018 Pipe Wrench
D080018HP	Pin - D080018 Pipe Wrench
D080018KN	Knurl - D080018 Pipe Wrench
D080024HJ	Hook Jaw - D080024 Pipe Wrench
D080024HP	Pin - D080024 Pipe Wrench
D080024KN	Knurl - D080024 Pipe Wrench
D080036HJ	Hook Jaw - D080036 Pipe Wrench
D080036HP	Pin - D080036 Pipe Wrench
D080036KN	Knurl - D080036 Pipe Wrench
D080048HJ	Hook Jaw - D080048 Pipe Wrench
D080048HP	Pin - D080048 Pipe Wrench
D080048KN	Knurl - D080048 Pipe Wrench

# Alphabetical Index

## A

- Adapters**
  - 3/8" Drive ..... 42
  - 1/2" Drive ..... 64
- Adapters Impact**
  - 3/8" Drive ..... 49

## C

- Chisels**
  - Cold Chisel ..... 119
  - Sets ..... 117-118
- C-Clamps** ..... 121

## E

- Electrical Tools**
  - ..... 104-107
- Extensions**
  - 1/4" Drive ..... 25
  - 3/8" Drive ..... 42
  - 1/2" Drive ..... 64
  - 3/4" Drive ..... 74
  - 1" Drive ..... 80
- Extensions Impact**
  - 3/8" Drive ..... 49

## F

- Files** ..... 127
- Flex Handles**
  - 1/4" Drive ..... 25
  - 3/8" Drive ..... 42
  - 1/2" Drive ..... 64
  - 3/4" Drive ..... 74
  - 1" Drive ..... 80

## H

- Hand Driver**
  - 1/4" Drive ..... 25
- Hammers**
  - Ball Pein ..... 123
  - Bricklayer ..... 125
  - Claw ..... 123
  - Club ..... 124
  - Dead Blow ..... 124
  - Framing ..... 125
  - Rubber Mallet . 125
  - Sledge ..... 124
  - Soft Face ..... 125
- Hex Keys** ..... 94-96

## I

- Insulated**
  - Screwdrivers .. 104
  - Pliers ..... 105-106

## M

- Master Sets** ... 5-11

## N

- Nut Drivers** ..... 101

## P

- Pliers**
  - Aviation Snips . 113
  - Bent Nose ..... 110
  - Cable Cutter ... 112
  - Diagonal ..... 110
  - End Cutter ..... 112
  - Groove Joint .. 111
  - Linesman ..... 111
  - Locking ... 114-115
  - Long Nose ..... 110
  - Sets ..... 109-110
  - Slip Joint ..... 111
  - Tin Snips ..... 112
  - Wire Strippers.. 107
- Pry Bars**
  - Crow Bar ..... 126
  - Pinch Bar ..... 126
  - Wonder Bar ... 126
  - Wrecking Bar . 126
- Pullers** ..... 121

## Punches

- Centre ..... 119
- Drift ..... 119
- Pin ..... 119
- Sets ..... 117-118
- Solid ..... 119

## R

- Ratchets**
  - 1/4" Drive ..... 24
  - 3/8" Drive ..... 41
  - 1/2" Drive ..... 64
  - 3/4" Drive ..... 74
  - 1" Drive ..... 80

## S

- Screwdrivers**
  - Phillips® ..... 100
  - Precision ..... 102
  - Sets ..... 98-99
  - Slotted ..... 100
  - Square Recess .100

## Sockets

- Hex Head
  - 3/8" Drive .. 45-46
  - 1/2" Drive .. 67-68
- Sets
  - 3/8" Drive .. 32-34
  - 1/2" Drive .. 58-59

## S

### Sockets (cont'd)

- Phillips®
  - 3/8" Drive ..... 47
- Slotted
  - 3/8" Drive ..... 47
- Torx®
  - 1/4" Drive ..... 27
  - 3/8" Drive ..... 47
  - 1/2" Drive ..... 68
- Sets
  - 1/4" Drive ..... 22
  - 3/8" Drive ..... 35
  - 1/2" Drive ..... 60
- Chrome
  - 1/4" Drive ..... 19
  - 3/8" Drive ..... 28
  - 1/2" Drive ..... 54
  - 3/4" Drive ..... 73
  - 1" Drive ..... 79
- Crowfoot ..... 48
  - Sets ..... 36
- Impact
  - 3/8" Drive .. 52-53
  - 1/2" Drive .. 71-72
  - 3/4" Drive .. 77-78
- Spark Plug
  - 3/8" Drive ..... 42

## T

- T-Handles**
  - 1/4" Drive ..... 25
  - 3/8" Drive ..... 42
  - 1/2" Drive ..... 64
  - 3/4" Drive ..... 74
  - 1" Drive ..... 80
- Tool Storage**.. 12-17
- Torque Multipliers** . 92

## U

- U-Joints**
  - 1/4" Drive ..... 25
  - 3/8" Drive ..... 42
  - 1/2" Drive ..... 64
- U-Joints Impact**
  - 3/8" Drive ..... 49

## W

- Wrenches**
  - Adjustable ..... 91
  - Combination.. 82-87
  - Pipe ..... 91
  - Ratcheting .. 88-90
  - Torque ..... 92

# Numerical Index

D001002 .....25	D003303 .....26	D005401 .....42	D006740 .....47
D001004 .....25	D003304 .....26	D005402 .....42	D006745 .....47
D001006 .....25	D003306 .....26	D005500 .....42	D006750 .....47
D001101 .....25	D003308 .....26	D005601 .....42	D006755 .....47
D001201 .....25	D003309 .....26	D005701 .....42	D006904 .....46
D001208 .....128	D003310 .....26	D005702 .....42	D006905 .....46
D001301 .....24	D003311 .....26	D005710 .....49	D006906 .....46
D001302 .....24	D003312 .....26	D005800 .....42	D006907 .....46
D001305 .....128	D003314 .....26	D005801 .....128	D006908 .....46
D001306 .....24	D003316 .....26	D006004 .....46	D006909 .....46
D001306RK .....128	D003318 .....26	D006005 .....46	D006910 .....46
D001307 .....24	D003404 .....26	D006006 .....46	D006952 .....45
D001500 .....25	D003406 .....26	D006007 .....46	D006953 .....45
D001601 .....25	D003408 .....26	D006008 .....46	D006954 .....45
D001800 .....25	D003409 .....26	D006009 .....46	D006956 .....45
D001801 .....128	D003410 .....26	D006010 .....46	D006958 .....45
D002308 .....27	D003411 .....26	D006052 .....45	D006960 .....45
D002309 .....27	D003412 .....26	D006053 .....45	D006962 .....45
D002310 .....27	D003414 .....26	D006054 .....45	D007008 .....53
D002315 .....27	D003416 .....26	D006056 .....45	D007009 .....53
D002320 .....27	D003418 .....26	D006058 .....45	D007010 .....53
D002325 .....27	D003504 .....26	D006060 .....45	D007011 .....53
D002327 .....27	D003506 .....26	D006062 .....45	D007012 .....53
D002330 .....27	D003508 .....26	D006105 .....47	D007013 .....53
D003004 .....27	D003509 .....26	D006106 .....47	D007014 .....53
D003005 .....27	D003510 .....26	D006107 .....47	D007015 .....53
D003006 .....27	D003511 .....26	D006108 .....47	D007016 .....53
D003007 .....27	D003512 .....26	D006201 .....47	D007017 .....53
D003008 .....27	D003514 .....26	D006202 .....47	D007018 .....53
D003009 .....27	D003516 .....26	D006203 .....47	D007019 .....53
D003010 .....27	D003518 .....26	D006204 .....47	D007208 .....53
D003011 .....27	D004000 .....19	D006315 .....47	D007209 .....53
D003012 .....27	D004001 .....19	D006320 .....47	D007210 .....53
D003013 .....27	D004002 .....20	D006325 .....47	D007211 .....53
D003014 .....27	D004003 .....21	D006327 .....47	D007212 .....53
D003015 .....27	D004004 .....22	D006330 .....47	D007213 .....53
D003045 .....27	D004005 .....23	D006340 .....47	D007214 .....53
D003055 .....27	D004006 .....23	D006345 .....47	D007215 .....53
D003104 .....27	D004007 .....20	D006350 .....47	D007216 .....53
D003105 .....27	D004008 .....21	D006355 .....47	D007217 .....53
D003106 .....27	D004009 .....22	D006404 .....46	D007218 .....53
D003107 .....27	D005003 .....42	D006405 .....46	D007219 .....53
D003108 .....27	D005006 .....42	D006406 .....46	D007310 .....52
D003109 .....27	D005010 .....42	D006407 .....46	D007312 .....52
D003110 .....27	D005023 .....42	D006408 .....46	D007314 .....52
D003111 .....27	D005026 .....42	D006409 .....46	D007316 .....52
D003112 .....27	D005030 .....42	D006410 .....46	D007318 .....52
D003204 .....27	D005053 .....49	D006452 .....45	D007320 .....52
D003205 .....27	D005056 .....49	D006453 .....45	D007322 .....52
D003206 .....27	D005208 .....128	D006454 .....45	D007324 .....52
D003207 .....27	D005301 .....41	D006456 .....45	D007510 .....52
D003208 .....27	D005302 .....41	D006458 .....45	D007512 .....52
D003209 .....27	D005305 .....128	D006460 .....45	D007514 .....52
D003210 .....27	D005306 .....41	D006462 .....45	D007516 .....52
D003211 .....27	D005306RK .....128	D006715 .....47	D007518 .....52
D003212 .....27	D005307 .....41	D006720 .....47	D007520 .....52
D003213 .....27	D005307RK .....128	D006725 .....47	D007522 .....52
D003214 .....27	D005308 .....41	D006727 .....47	D007524 .....52
D003255 .....27	D005308RK .....128	D006730 .....47	D008006 .....44

# Numerical Index

D008007	44	D008528	43	D009414	43	D010022	51
D008008	44	D008530	43	D009416	43	D010023	51
D008009	44	D008532	43	D009418	43	D010024	33
D008010	44	D008612	48	D009420	43	D010025	34
D008011	44	D008614	48	D009422	43	D010026	37
D008012	44	D008616	48	D009424	43	D010027	37
D008013	44	D008618	48	D009426	43	D010028	36
D008014	44	D008620	48	D009428	43	D010029	36
D008015	44	D008622	48	D009430	43	D012005	64
D008016	44	D008624	48	D009432	43	D012010	64
D008017	44	D008642	48	D009608	43	D012023	64
D008018	44	D008644	48	D009610	43	D012025	64
D008019	44	D008646	48	D009612	43	D012030	64
D008020	44	D008648	48	D009614	43	D012055	49
D008021	44	D008650	48	D009616	43	D012060	49
D008022	44	D008652	48	D009618	43	D012208	128
D008023	44	D008654	48	D009620	43	D012301	64
D008024	44	D008660	49	D009622	43	D012302	64
D008206	44	D008710	48	D009624	43	D012305	128
D008207	44	D008711	48	D009626	43	D012308	64
D008208	44	D008712	48	D009628	43	D012308RK	128
D008209	44	D008713	48	D009630	43	D012500	64
D008210	44	D008714	48	D009632	43	D012600	64
D008211	44	D008715	48	D009706	44	D012701	64
D008212	44	D008716	48	D009707	44	D012710	49
D008213	44	D008717	48	D009708	44	D012711	49
D008214	44	D008718	48	D009709	44	D012800	64
D008215	44	D008719	48	D009710	44	D012801	128
D008216	44	D008760	48	D009711	44	D012803	64
D008217	44	D008761	48	D009712	44	D012803RK	128
D008218	44	D008762	48	D009713	44	D013006	67
D008219	44	D008763	48	D009714	44	D013008	67
D008220	44	D008764	48	D009715	44	D013010	67
D008221	44	D008765	48	D009716	44	D013012	67
D008222	44	D008766	48	D009717	44	D013014	67
D008223	44	D008767	48	D009718	44	D013017	67
D008308	43	D008768	48	D009719	44	D013019	67
D008310	43	D008769	48	D010000	28	D013058	67
D008312	43	D009106	44	D010001	28	D013060	67
D008314	43	D009107	44	D010002	29	D013062	67
D008316	43	D009108	44	D010003	29	D013064	67
D008318	43	D009109	44	D010004	30	D013066	67
D008320	43	D009110	44	D010005	30	D013068	67
D008322	43	D009111	44	D010006	31	D013070	67
D008324	43	D009112	44	D010007	31	D013074	67
D008326	43	D009113	44	D010008	38	D013320	68
D008328	43	D009114	44	D010009	38	D013325	68
D008330	43	D009115	44	D010010	39	D013327	68
D008332	43	D009116	44	D010011	39	D013330	68
D008508	43	D009117	44	D010012	40	D013340	68
D008510	43	D009118	44	D010013	40	D013345	68
D008512	43	D009119	44	D010014	32	D013350	68
D008514	43	D009120	44	D010015	32	D013406	68
D008516	43	D009121	44	D010016	33	D013408	68
D008518	43	D009122	44	D010017	34	D013410	68
D008520	43	D009123	44	D010018	35	D013412	68
D008522	43	D009408	43	D010019	35	D013414	68
D008524	43	D009410	43	D010020	50	D013417	68
D008526	43	D009412	43	D010021	50	D013419	68

# Numerical Index

D013458 .....67	D014230 .....72	D015412 .....65	D016019 .....66
D013460 .....67	D014236 .....72	D015414 .....65	D016020 .....66
D013462 .....67	D014312 .....71	D015416 .....65	D016021 .....66
D013464 .....67	D014314 .....71	D015418 .....65	D016022 .....66
D013466 .....67	D014316 .....71	D015420 .....65	D016023 .....66
D013468 .....67	D014318 .....71	D015422 .....65	D016024 .....66
D013470 .....67	D014320 .....71	D015424 .....65	D016025 .....66
D013474 .....67	D014322 .....71	D015426 .....65	D016026 .....66
D013720 .....68	D014324 .....71	D015428 .....65	D016027 .....66
D013725 .....68	D014326 .....71	D015430 .....65	D016028 .....66
D013727 .....68	D014328 .....71	D015432 .....65	D016029 .....66
D013730 .....68	D014330 .....71	D015434 .....65	D016030 .....66
D013740 .....68	D014332 .....71	D015436 .....65	D016031 .....66
D013745 .....68	D014334 .....71	D015438 .....65	D016032 .....66
D013750 .....68	D014336 .....71	D015440 .....65	D016210 .....66
D014008 .....72	D014338 .....71	D015442 .....65	D016211 .....66
D014009 .....72	D014340 .....71	D015612 .....65	D016212 .....66
D014010 .....72	D014342 .....71	D015614 .....65	D016213 .....66
D014011 .....72	D014344 .....71	D015616 .....65	D016214 .....66
D014012 .....72	D014346 .....71	D015618 .....65	D016215 .....66
D014013 .....72	D014348 .....71	D015620 .....65	D016216 .....66
D014014 .....72	D014512 .....71	D015622 .....65	D016217 .....66
D014015 .....72	D014514 .....71	D015624 .....65	D016218 .....66
D014016 .....72	D014516 .....71	D015626 .....65	D016219 .....66
D014017 .....72	D014518 .....71	D015628 .....65	D016220 .....66
D014018 .....72	D014520 .....71	D015630 .....65	D016221 .....66
D014019 .....72	D014522 .....71	D015632 .....65	D016222 .....66
D014020 .....72	D014524 .....71	D015634 .....65	D016223 .....66
D014021 .....72	D014526 .....71	D015636 .....65	D016224 .....66
D014022 .....72	D014528 .....71	D015638 .....65	D016225 .....66
D014023 .....72	D014530 .....71	D015640 .....65	D016226 .....66
D014024 .....72	D014532 .....71	D015642 .....65	D016227 .....66
D014025 .....72	D014534 .....71	D015710 .....66	D016228 .....66
D014026 .....72	D014536 .....71	D015711 .....66	D016229 .....66
D014027 .....72	D014538 .....71	D015712 .....66	D016230 .....66
D014028 .....72	D014540 .....71	D015713 .....66	D016231 .....66
D014029 .....72	D014542 .....71	D015714 .....66	D016232 .....66
D014030 .....72	D014544 .....71	D015715 .....66	D016312 .....65
D014031 .....72	D015110 .....66	D015716 .....66	D016314 .....65
D014032 .....72	D015111 .....66	D015717 .....66	D016316 .....65
D014036 .....72	D015112 .....66	D015718 .....66	D016318 .....65
D014208 .....72	D015113 .....66	D015719 .....66	D016320 .....65
D014209 .....72	D015114 .....66	D015720 .....66	D016322 .....65
D014210 .....72	D015115 .....66	D015721 .....66	D016324 .....65
D014211 .....72	D015116 .....66	D015722 .....66	D016326 .....65
D014212 .....72	D015117 .....66	D015723 .....66	D016328 .....65
D014213 .....72	D015118 .....66	D015724 .....66	D016330 .....65
D014214 .....72	D015119 .....66	D015725 .....66	D016332 .....65
D014215 .....72	D015120 .....66	D015726 .....66	D016334 .....65
D014216 .....72	D015121 .....66	D015727 .....66	D016336 .....65
D014217 .....72	D015122 .....66	D016010 .....66	D016338 .....65
D014218 .....72	D015123 .....66	D016011 .....66	D016340 .....65
D014219 .....72	D015124 .....66	D016012 .....66	D016342 .....65
D014220 .....72	D015125 .....66	D016013 .....66	D016512 .....65
D014221 .....72	D015126 .....66	D016014 .....66	D016514 .....65
D014222 .....72	D015127 .....66	D016015 .....66	D016516 .....65
D014223 .....72	D015128 .....66	D016016 .....66	D016518 .....65
D014224 .....72	D015130 .....66	D016017 .....66	D016520 .....65
D014227 .....72	D015132 .....66	D016018 .....66	D016522 .....65

# Numerical Index

D016524	.....65	D020043	.....78	D022121	.....75	D041041	.....124
D016526	.....65	D020046	.....78	D022122	.....75	D041042	.....124
D016528	.....65	D020050	.....78	D022123	.....75	D041043	.....124
D016530	.....65	D020219	.....78	D022124	.....75	D041044	.....124
D016532	.....65	D020227	.....78	D022125	.....75	D041045	.....124
D016534	.....65	D020230	.....78	D022126	.....75	D041060	.....124
D016536	.....65	D020232	.....78	D022127	.....75	D041061	.....124
D016538	.....65	D020233	.....78	D022128	.....75	D041065	.....124
D016540	.....65	D020235	.....78	D022129	.....75	D041067	.....124
D016542	.....65	D020236	.....78	D022130	.....75	D041069	.....124
D016660	.....49	D020238	.....78	D022132	.....75	D041110	.....125
D018000	.....54	D020241	.....78	D022135	.....75	D041130	.....125
D018001	.....54	D020243	.....78	D022136	.....75	D041151	.....125
D018002	.....55	D020324	.....77	D022138	.....75	D041152	.....125
D018003	.....55	D020326	.....77	D022141	.....75	D041153	.....128
D018004	.....56	D020328	.....77	D022146	.....75	D041154	.....125
D018005	.....56	D020330	.....77	D022150	.....75	D041155	.....125
D018006	.....57	D020332	.....77	D022428	.....75	D041156	.....128
D018007	.....57	D020334	.....77	D022430	.....75	D043201	.....94
D018008	.....61	D020336	.....77	D022432	.....75	D043202	.....94
D018009	.....61	D020338	.....77	D022434	.....75	D043203	.....94
D018010	.....63	D020340	.....77	D022436	.....75	D043204	.....94
D018011	.....63	D020342	.....77	D022438	.....75	D043205	.....94
D018012	.....62	D020344	.....77	D022440	.....75	D043206	.....95
D018013	.....62	D020346	.....77	D022442	.....75	D043207	.....95
D018014	.....59	D020348	.....77	D022444	.....75	D043208	.....95
D018015	.....59	D020350	.....77	D022446	.....75	D043209	.....95
D018016	.....60	D020352	.....77	D022448	.....75	D043301	.....96
D018017	.....60	D020354	.....77	D022450	.....75	D043302	.....96
D018018	.....58	D020356	.....77	D022452	.....75	D043303	.....96
D018019	.....58	D020358	.....77	D022454	.....75	D043305	.....96
D018020	.....69	D020360	.....77	D022456	.....75	D043307	.....96
D018021	.....69	D020362	.....77	D022458	.....75	D043309	.....96
D018022	.....70	D020364	.....77	D022460	.....75	D043310	.....96
D018023	.....70	D020366	.....77	D022464	.....75	D043311	.....96
D019004	.....74	D020368	.....77	D022660	.....49	D043320	.....96
D019008	.....74	D020370	.....77	D023000	.....73	D043401	.....96
D019016	.....74	D020372	.....77	D023001	.....73	D043402	.....96
D019056	.....49	D020374	.....77	D024008	.....80	D043404	.....96
D019060	.....49	D020376	.....77	D024015	.....80	D043406	.....96
D019208	.....128	D020524	.....77	D024301	.....80	D043407	.....96
D019301	.....74	D020526	.....77	D024301RK	.....128	D043409	.....96
D019501	.....74	D020528	.....77	D024500	.....80	D043410	.....96
D019710	.....49	D020530	.....77	D027001	.....79	D043411	.....96
D019805	.....74	D020532	.....77	D027800	.....80	D043420	.....96
D019805RK	.....128	D020534	.....77	D027805RK	.....128	D055000	.....110
D020024	.....78	D020536	.....77	D041000	.....125	D055001	.....110
D020027	.....78	D020538	.....77	D041001	.....125	D055002	.....110
D020028	.....78	D020540	.....77	D041010	.....123	D055003	.....110
D020030	.....78	D020542	.....77	D041011	.....123	D055004	.....110
D020032	.....78	D020544	.....77	D041020	.....123	D055005	.....110
D020033	.....78	D020546	.....77	D041022	.....123	D055006	.....110
D020034	.....78	D020548	.....77	D041023	.....123	D055007	.....111
D020035	.....78	D020550	.....77	D041024	.....123	D055008	.....111
D020036	.....78	D020552	.....77	D041025	.....123	D055009	.....111
D020038	.....78	D021000	.....76	D041027	.....123	D055010	.....111
D020040	.....78	D021001	.....76	D041028	.....123	D055011	.....111
D020041	.....78	D022119	.....75	D041029	.....123	D055012	.....111
D020042	.....78	D022120	.....75	D041040	.....124	D055013	.....111



# Numerical Index

D055014 .....111	D056330 .....126	D062403 .....101	D069573 .....15
D055028 .....113	D056336 .....126	D062404 .....101	D069574 .....14
D055029 .....113	D056342 .....126	D062405 .....101	D069575 .....17
D055030 .....113	D058001 .....119	D062406 .....101	D069580 .....13
D055031 .....112	D058002 .....119	D062407 .....101	D069581 .....14
D055032 .....112	D058003 .....119	D062408 .....101	D069582 .....15
D055033 .....112	D058004 .....119	D062409 .....101	D069583 .....16
D055034 .....112	D058005 .....119	D062410 .....101	D069601 .....13
D055035 .....112	D058006 .....119	D062411 .....101	D069602 .....14
D055036 .....112	D058007 .....119	D062412 .....101	D069603 .....17
D055037 .....112	D058008 .....119	D062413 .....101	D069605 .....13
D055038 .....110	D058009 .....119	D062414 .....101	D069606 .....14
D055100 .....105	D058010 .....119	D062500 .....98	D069607 .....16
D055101 .....105	D058011 .....119	D062503 .....101	D069650 .....17
D055102 .....105	D058012 .....119	D062504 .....101	D069651 .....17
D055103 .....105	D058013 .....119	D062505 .....98	D072004 .....91
D055104 .....106	D058014 .....119	D062506 .....99	D072006 .....91
D055105 .....106	D058015 .....119	D062508 .....99	D072008 .....91
D055106 .....106	D058016 .....119	D062509 .....102	D072010 .....91
D055107 .....106	D058017 .....119	D062701 .....104	D072012 .....91
D055108 .....106	D058018 .....119	D062702 .....104	D072015 .....91
D055109 .....106	D058019 .....119	D062703 .....104	D072018 .....91
D055200 .....109	D058020 .....119	D062704 .....104	D074008 .....86
D055201 .....109	D058021 .....119	D062705 .....104	D074010 .....86
D055205 .....113	D058030 .....119	D062706 .....104	D074012 .....86
D055210 .....105	D058101 .....119	D062720 .....104	D074014 .....86
D055301 .....114	D058102 .....119	D062801 .....102	D074016 .....86
D055302 .....114	D058103 .....119	D062802 .....102	D074018 .....86
D055303 .....114	D058104 .....119	D062803 .....102	D074020 .....86
D055304 .....114	D058105 .....119	D062804 .....102	D074022 .....86
D055305 .....114	D058106 .....119	D062805 .....102	D074024 .....86
D055306 .....114	D058107 .....119	D062806 .....102	D074026 .....86
D055307 .....114	D058108 .....119	D062807 .....102	D074028 .....86
D055308 .....115	D058109 .....119	D069001 .....17	D074030 .....86
D055309 .....115	D058110 .....119	D069002 .....17	D074032 .....86
D055310 .....115	D058200 .....117	D069101 .....16	D074034 .....86
D055311 .....115	D058201 .....117	D069102 .....17	D074036 .....86
D055312 .....114	D058202 .....118	D069103 .....16	D074040 .....86
D055313 .....114	D058203 .....118	D069201 .....13	D074106 .....86
D055314 .....115	D062001 .....100	D069202 .....15	D074107 .....86
D055315 .....115	D062002 .....100	D069203 .....13	D074108 .....86
D055316 .....114	D062003 .....100	D069204 .....15	D074109 .....86
D055401 .....115	D062004 .....100	D069205 .....14	D074110 .....86
D055500 .....110	D062005 .....100	D069206 .....13	D074111 .....86
D055502 .....110	D062006 .....100	D069207 .....14	D074112 .....86
D055514 .....111	D062007 .....100	D069208 .....15	D074113 .....86
D055530 .....110	D062101 .....100	D069209 .....16	D074114 .....86
D056016 .....126	D062102 .....100	D069498 .....17	D074115 .....86
D056020 .....126	D062103 .....100	D069499 .....17	D074116 .....86
D056024 .....126	D062104 .....100	D069500 .....13-15	D074117 .....86
D056030 .....126	D062105 .....100	D069501 .....13-16	D074118 .....86
D056036 .....126	D062201 .....100	D069505 .....13	D074119 .....86
D056113 .....126	D062202 .....100	D069506 .....15	D074120 .....86
D056118 .....126	D062203 .....100	D069507 .....13	D074121 .....86
D056214 .....126	D062204 .....100	D069508 .....15	D074122 .....86
D056218 .....126	D062205 .....100	D069509 .....14	D074123 .....86
D056312 .....126	D062206 .....100	D069570 .....13, 14	D074124 .....86
D056318 .....126	D062401 .....101	D069571 .....15	D074125 .....86
D056324 .....126	D062402 .....101	D069572 .....13, 16	D074126 .....86

# Numerical Index

D074127 .....86	D074422 .....87	D080018HJ .....128	D095001 .....107
D074128 .....86	D074423 .....87	D080018HP .....128	D095002 .....107
D074129 .....86	D074424 .....87	D080018KN .....128	D096001 .....6
D074130 .....86	D074425 .....87	D080024 .....91	D096001-FO .....9
D074132 .....86	D074426 .....87	D080024HJ .....128	D096001-FT .....9
D074201 .....82	D074427 .....87	D080024HP .....128	D096002 .....7
D074202 .....82	D074428 .....87	D080024KN .....128	D096003 .....8
D074203 .....84	D074429 .....87	D080036 .....91	D096004-FO .....9
D074204 .....84	D074430 .....87	D080036HJ .....128	D099446 .....79
D074221 .....83	D074432 .....87	D080036HP .....128	D099448 .....79
D074222 .....83	D076010 .....90	D080036KN .....128	D099450 .....79
D074223 .....85	D076012 .....90	D080048 .....91	D099452 .....79
D074224 .....85	D076014 .....90	D080048HJ .....128	D099454 .....79
D074308 .....87	D076016 .....90	D080048HP .....128	D099456 .....79
D074310 .....87	D076018 .....90	D080048KN .....128	D099458 .....79
D074312 .....87	D076020 .....90	D086000 .....92	D099460 .....79
D074314 .....87	D076022 .....90	D086001 .....92	D099462 .....79
D074316 .....87	D076024 .....90	D086002 .....92	D099464 .....79
D074318 .....87	D076108 .....90	D086003 .....92	D099466 .....79
D074320 .....87	D076109 .....90	D086101 .....92	D099468 .....79
D074322 .....87	D076110 .....90	D086102 .....92	D099470 .....79
D074324 .....87	D076111 .....90	D090001 .....121	D099472 .....79
D074326 .....87	D076112 .....90	D090002 .....121	D099474 .....79
D074328 .....87	D076113 .....90	D090003 .....121	D099476 .....79
D074330 .....87	D076114 .....90	D090004 .....121	D099478 .....79
D074332 .....87	D076115 .....90	D090005 .....121	D099480 .....79
D074334 .....87	D076116 .....90	D090006 .....121	D099482 .....79
D074336 .....87	D076117 .....90	D090007 .....121	D099484 .....79
D074340 .....87	D076118 .....90	D093001 .....121	D099486 .....79
D074342 .....87	D076119 .....90	D093001RT .....128	D099488 .....79
D074344 .....87	D076210 .....90	D093002 .....121	
D074346 .....87	D076212 .....90	D093002RT .....128	
D074348 .....87	D076214 .....90	D093101 .....128	
D074350 .....87	D076216 .....90	D093102 .....128	
D074352 .....87	D076218 .....90	D093103 .....128	
D074354 .....87	D076220 .....90	D093104 .....128	
D074356 .....87	D076222 .....90	D093105 .....128	
D074358 .....87	D076224 .....90	D093106 .....128	
D074360 .....87	D076308 .....90	D093107 .....128	
D074362 .....87	D076309 .....90	D093108 .....128	
D074364 .....87	D076310 .....90	D093109 .....128	
D074366 .....87	D076311 .....90	D093110 .....128	
D074368 .....87	D076312 .....90	D093111 .....128	
D074406 .....87	D076313 .....90	D093112 .....128	
D074407 .....87	D076314 .....90	D094001 .....127	
D074408 .....87	D076315 .....90	D094002 .....127	
D074409 .....87	D076316 .....90	D094003 .....127	
D074410 .....87	D076317 .....90	D094101 .....127	
D074411 .....87	D076318 .....90	D094102 .....127	
D074412 .....87	D076319 .....90	D094103 .....127	
D074413 .....87	D076601 .....88	D094201 .....127	
D074414 .....87	D076603 .....88	D094202 .....127	
D074415 .....87	D076607 .....89	D094203 .....127	
D074416 .....87	D076608 .....89	D094211 .....127	
D074417 .....87	D080014 .....91	D094212 .....127	
D074418 .....87	D080014HJ .....128	D094213 .....127	
D074419 .....87	D080014HP .....128	D094301 .....127	
D074420 .....87	D080014KN .....128	D094302 .....127	
D074421 .....87	D080018 .....91	D094303 .....127	

# Notes

# Visit our website for new product updates and exciting sales promotions.

Retailer Connect

Search

## Dynamic

Follow Us:



Because You Have Work To Do

HOME

ABOUT

PRODUCTS

WHERE TO BUY

PROMOTIONS

NEWS

CONTACT

### Passionate about tools? Connect with Dynamic Tools through social media.



#### Join the Dynamic online community and enjoy the benefits:

- Get access to exclusive offers & contests
- Be the first to receive new products notifications
- Share your knowledge and experience with others
- Ask questions before you buy
- Expand your social network

Follow us on Twitter



Find us on Facebook



#### DYNAMIC NEWS

Dynamic Tools introduces Contractor Series combination wrenches.



CLICK HERE FOR MORE INFO

#### CURRENT PROMOTIONS

Win Tools That Make Your Job Easier



CLICK HERE FOR MORE INFO

#### WHERE TO BUY

Discover Dynamic at a distributor near you.



CLICK HERE FOR MORE INFO

#### NEWSLETTER SIGN UP

Get exclusive insights on new product introductions and exciting sales promotions.



CLICK HERE FOR MORE INFO

©2011 Copyright | Terms & Conditions | Privacy Policy | Website by Trinitas  
Sitemap: Home | About | Products | Where To Buy | Promotions | News | Contact | Français

# www.dynamictools.ca

Available at:

*www.dynamictools.ca*

*Tel: 1-800-567-0518*

*Fax: 1-800-264-6977*

*E-mail: info@dynamictools.ca*

**Dynamic® is a registered trademark of Gray Tools Canada Inc.**