

Dynamic

The Tools That Make Your Job Easier

TYPE
NO. 12
DATE

WATSON MACHINERY CORP.
1-1, OHTSU HAMA-CHO, FUKUI-CITY
910-8520 JAPAN



About Us



Dynamic®-The Tools That Make Your Job Easier

You are a busy professional who needs to get the job done quickly and efficiently.

The Dynamic® line of tools is designed to offer just that: an easy and cost effective way to tackle your demanding projects using reliable and comfortable tools.

The ease-of-use of the tools is reflected across different product categories. The laser etching on the sockets and wrenches make the selection of the right size a breeze.

Other product categories such as pliers and screwdrivers feature ergonomic and highly visible handles making the tools easy to spot in the toolbox.

Our unique sets with tool control organizers program allows you to find the tool you need fast, identify missing tools and prevent tools from rolling inside the drawers.

All Dynamic tools have been proven to provide piece of mind and many years of service.

Most Dynamic® products are backed by a lifetime warranty and Gray's Customer Service, which consistently ranks first in the industry.

We invite you to discover the benefits of the Dynamic® line at our many points of sale. Our goal is to make your job easier.

The Dynamic® Team



Contents

Table of Contents

Tool Sets With Foam Tray Organizers	05
Master Sets	21
Tool Storage	25
Sockets & Attachments	
1/4" Drive Chrome	33
3/8" Drive Chrome	42
3/8" Drive Impact	63
1/2" Drive Chrome	68
1/2" Drive Impact	83
3/4" Drive Chrome	88
3/4" Drive Impact	91
1" Drive Chrome	94
Wrenches	
Combination Wrenches	97
Ratcheting Wrenches	103
Adjustable Wrenches	109
Pipe Wrenches	109
Torque Multipliers	109
Torque Wrenches	110
Hex Keys	111
Screwdrivers & Nut Drivers	115
Electrical Tools	121
Pliers & Cutters	
Comfort Handle	126
Bolt Cutters	129
Snips & Cutters	130
Locking	132
Punches & Chisels	134
Clamping & Extracting	138
Striking Tools	
Hammers	140
Pry Bars	144
Files	145
Replacement Parts	146
Alphabetical Index	147
Numerical Index	148

Why Dynamic

Better Design For Greater Efficiency



Dynamic tools are designed to help you finish projects faster. Extensive consumer research conducted by independent companies combined with our own tool expertise allowed us to offer tools designed to address the most important hand tool requirements. The laser-etched markings on sockets and wrenches make the selection of the right size a breeze. Other product categories feature ergonomic and highly visible handles making tools easy to spot in any toolbox.

Higher Quality Standards for Trusted Reliability



By partnering with the most qualified global suppliers capable and willing to comply with our high quality standards, Dynamic offers a large number of professional users in industrial, construction and trades access to reliable tools. Dynamic is offered by a reputable company that has been in the hand tool business since 1912. This tool expertise results in each tool being carefully inspected and tested to make sure it provides many years of service. Furthermore, the vast majority of the products are backed by a no hassle lifetime warranty.

Select Distribution For Better Service



Dynamic tools are offered through a network of highly specialized distribution partners that are carefully selected to sell and service the line. These focused distributors provide faster service, experienced know how, knowledgeable advice, immediate delivery and personalized post sale service. Because getting the tools you need for the job should not be a hassle.

To locate the Dynamic retailer near you visit our website www.dynamictools.ca and click on Where to Buy.

Become a Member Of the Dynamic Community

Join the Dynamic Tools community and enjoy the benefits:

- Be the first to receive new product notifications
- Get access to exclusive offers & contests
- Ask questions before you buy
- Expand your social network



facebook.com/dynamictools



[@dynamictools](https://twitter.com/dynamictools)

www.dynamictools.ca

Warranty Policy

Limited Lifetime Warranty:

We stand behind the quality of the products we manufacture and redistribute. In the unlikely event a product fails, warranty will be granted quickly and unconditionally, providing the products were used for the application intended. Products used inappropriately or not maintained properly will not be considered for warranty.

No warranty consideration can be made if the initial inspection shows that the product has been:

- Hammered.
- Heated.
- Used with any device to create additional leverage.
- Machined or modified in any way.
- Used for purposes other than those, which it was designed for.
- Overstressed or over torqued.

Products such as ratchets, flex handles, universal joints, and adjustable wrenches require periodic maintenance and repair. When a product needs repair due to normal wear and tear, the repair will be at the customer's expense.

Products that carry a limited warranty:

The following products do not qualify for lifetime warranty:

- Toolboxes, torque wrenches, torque multipliers (1 year warranty)

Non-Warranty Items:

Due to the nature of the product, the following items are not warranted:

- Reducing adapters and impact universal joints
- Foam tray organizers

Warranty coverage applies to original owner only and is non-transferable.

Please keep your proof of purchase records, which will be required for warranty.

Gray Tools Canada will be the sole authority in evaluating the products and determining warranty claims and will be glad to replace products qualifying for warranty received prepaid. Gray Tools Canada shall not be liable for any damage or injury due to product failure.

If your product qualifies for warranty, please return it to your local distributor, or call our Customer Service department for a warranty inspection number and further instructions.

Tool Sets With Foam Tray Organizers



All the Tools You Need

Sets include the most popular tools such as sockets and accessories, wrenches, pliers, screwdrivers and hammers, needed to tackle any job.

Find the Tool You Need Fast

Large, clearly labelled foam organizer trays with precision cutouts provide a tight fit for each tool in the set, keeping them neatly organized.

Identify Missing Tools

High-density foam in contrasting colors acts as a visual indicator so you can spot missing tools quickly.

Proper Tool Storage

Each tool set with pre-cut foam organizer is designed to fit inside the drawers of Dynamic roller cabinets and top chests.

Master Sets With Foam Organizers

Work more efficiently by keeping your tools organized.

- Find the tool you need fast
- Identify missing tools
- Keep tools from rolling and sliding inside drawer
- Protect your tools from damage



370 Piece Advanced Master Set with Foam Organizers

Part No. D096001-FO

Set includes:

369 tools

D069203 42" Roller Cabinet With 12 Drawers

D096001-FT 9 Piece Foam Tray Organizer System

For complete set content see page 7

125 Piece Auto Mechanic Master Set with Foam Organizers

Part No. D096004-FO

Set includes:

124 tools

D069201 28" Roller Cabinet With 7 Drawers

D096004-FT 5 Piece Foam Tray Organizer System

For complete set content see page 8



Master Sets With Foam Organizers

370 Piece Advanced Master Set Bundle

D096001-FO

42" Roller Cabinet, 12 Drawers, Ball Bearing Slides
1/4" Drive Extension 2"
1/4" Drive Extension 4"
1/4" Drive Extension 6"
1/4" Drive Spinner Handle
1/4" Drive 45 Tooth Ratchet- Chrome Handle
1/4" Drive Swivel Head Ratchet
1/4" Drive Stubby Ratchet
1/4" Drive Sliding T-Handle
1/4" Drive Universal Joint
1/4" Drive Flex Handle
1/4" Drive Chrome Sockets-Metric, 6 Point, Regular Length: 4, 5, 5.5, 6, 7, 8, 9, 10, 11, 12, 13, 14, 15 mm
1/4" Drive Chrome Sockets-Metric, 6 Point, Deep: 4, 5, 5.5, 6, 7, 8, 9, 10, 11, 12, 13, 14 mm
1/4" Drive Chrome Sockets-SAE, 6 Point, Regular Length: 5/32", 3/16", 7/32", 1/4", 9/32", 5/16", 11/32", 3/8", 7/16", 1/2", 9/16"
1/4" Drive Chrome Sockets-SAE, 6 Point, Deep: 3/16", 7/32", 1/4", 9/32", 5/16", 11/32", 3/8", 7/16", 1/2", 9/16"
3/8" Drive Extension 3"
3/8" Drive Extension 6"
3/8" Drive Extension 10"
3/8" Drive 45 Tooth Ratchet
3/8" Drive Stubby Ratchet
3/8" Sliding T-Handle
3/8" Flex Handle
3/8" Drive Chrome Sockets-Metric, 6 Point, Regular Length: 6, 7, 8, 9, 10, 11, 12, 13, 14, 15, 16, 17, 18, 19 mm
3/8" Drive Chrome Sockets-Metric, 6 Point, Deep: 6, 7, 8, 9, 10, 11, 12, 13, 14, 15, 16, 17, 18, 19 mm
3/8" Drive Chrome Sockets-SAE, 6 Point, Regular Length: 1/4", 5/16", 3/8", 7/16", 1/2", 9/16", 5/8", 11/16", 3/4", 13/16", 7/8", 15/16", 1"
3/8" Drive Chrome Sockets-SAE, 6 Point, Deep: 1/4", 5/16", 3/8", 7/16", 1/2", 9/16", 5/8", 11/16", 3/4", 13/16", 7/8", 15/16", 1"
1/2" Drive Extension 5"
1/2" Drive Extension 10"
1/2" Drive T-Handle Head
1/2" Drive 45 Tooth Ratchet - Chrome Handle
1/2" Drive Chrome Sockets-Metric, 6 Point, Regular Length: 10, 11, 12, 13, 14, 15, 16, 17, 18, 19, 20, 21, 22, 23, 24, 25, 26, 27, 28 mm
1/2" Drive Chrome Sockets-Metric, 6 Point, Deep: 10, 11, 12, 13, 14, 15, 16, 17, 18, 19, 20, 21, 22, 23, 24, 25, 26, 27, 28 mm
1/2" Drive Chrome Sockets-SAE, 6 Point, Regular Length: 3/8", 7/16", 1/2", 9/16", 5/8", 11/16", 3/4", 13/16", 7/8", 15/16", 1", 1-1/16", 1-1/8", 1-3/16", 1-1/4", 1-5/16"
1/2" Drive Chrome Sockets-SAE, 6 Point, Deep: 3/8", 7/16", 1/2", 9/16", 5/8", 11/16", 3/4", 13/16", 7/8", 15/16", 1", 1-1/16", 1-1/8", 1-3/16", 1-1/4", 1-5/16"
1.5 lb Rubber Mallet-Hickory Handle

16 oz Claw Hammer-Fiberglass Handle
16 oz Ball Pein Hammer-Fiberglass Handle
2 1/2 lb Club Hammer-Fiberglass Handle
14 oz Soft Face Hammer
Metric Hex-Keys-Regular Length: 0.7, 0.9, 1.3, 1.5, 2, 2.5, 3, 4, 4.5, 5, 5.5, 6, 7, 8, 10 mm
SAE Hex Keys-Long: 0.028", 0.035", 0.05", 1/16", 5/64", 3/32", 7/64", 1/8", 9/64", 5/32", 3/16", 7/32", 1/4", 5/16", 3/8"
8" Linesman Pliers Comfort Grip
7" Diagonal Cutting Pliers Comfort Grip
8" Long Nose Pliers Comfort Grip
8" Bent Nose Pliers Comfort Grip
8" Slip Joint Pliers Comfort Grip
Aviation Snip-Cuts Right
Aviation Snip-Cuts Straight
Aviation Snip-Cuts Left
10" Locking Plier Straight Jaws
10" Locking Plier Curved Jaws
7" Locking Plier-Curved Jaws With Wire Cutter
6" Locking Pliers-Long Nose
5" Locking Plier-Curved Jaws With Wire Cutter
Cold Chisel 5/16", 1/2", 5/8", 3/4", 7/8"
Centre Punch 1/8", 5/32", 1/4"
Solid Punch 1/8", 3/16", 1/4"
Drift Punch 3/16", 1/4"
Pin Punch 1/8", 3/16", 1/4"
Nut Drivers SAE: 3/16", 1/4", 5/16", 11/32", 3/8", 7/16", 1/2"
Nut Drivers Metric: 5, 6, 7, 8, 9, 10, 11 mm
Phillips® Screwdrivers: #0, 1, 2, 3
Phillips® Stubby Screwdrivers: #2
Slotted Screwdrivers: 5/32", 3/16", 1/4", 5/16", 3/8"
Slotted Stubby Screwdrivers: 1/4"
Square Recess Screwdrivers: #0, 1, 2, 3
Square Recess Stubby Screwdrivers: #1, 2
Offset Phillips® Screwdrivers: #1, 2
Offset Slotted Screwdrivers: 3/16", 1/4"
Offset Square Recess Screwdrivers: #1, 2
Circuit Tester 110V
Magnetic Bit Holder
Tamper Torx® Bits: T10, T15, T20, T25, T27, T30, T40
Hex Bits: 2, 2.5, 3, 4, 5, 6, 8
Phillips® Precision Screwdrivers: PH000, PH00, PH0
Slotted Precision Screwdrivers: 3/64", 5/64", 3/32", 1/8"
Adjustable Wrench: 8", 10"
Combination Wrenches SAE: 1/4", 5/16", 3/8", 7/16", 1/2", 9/16", 5/8", 11/16", 3/4", 13/16", 7/8", 15/16", 1", 1-1/16", 1-1/8", 1-1/4"
Combination Wrenches Metric: 6, 7, 8, 9, 10, 11, 12, 13, 14, 15, 16, 17, 18, 19, 20, 21, 22, 23, 24 mm
Reversible Ratcheting Wrenches SAE: 5/16", 3/8", 7/16", 1/2", 9/16", 5/8", 11/16", 3/4"
Reversible Ratcheting Wrenches Metric: 8, 9, 10, 11, 12, 13, 14, 15, 16, 17, 18, 19 mm

Master Sets With Foam Organizers

125 Piece Auto Mechanic Master Set Bundle

D096004-FO

28" Roller Cabinet, 7 Drawers, Ball Bearing Slides
1/4" Drive Chrome Sockets-*SAE*, 6 Point, Regular Length:
5/32", 3/16", 7/32", 1/4", 9/32", 5/16", 11/32", 3/8", 7/16", 1/2",
9/16"
3/8" Drive Chrome Sockets-*SAE*, 6 Point, Regular Length:
1/4", 5/16", 3/8", 7/16", 1/2", 9/16", 5/8", 11/16", 3/4", 13/16", 7/8",
15/16", 1"
1/4" Drive Chrome Sockets-*Metric*, 6 Point, Regular Length:
4, 5, 5.5, 6, 7, 8, 9, 10, 11, 12, 13, 14, 15 mm
3/8" Drive Chrome Sockets-*Metric*, 6 Point, Regular Length:
6, 7, 8, 9, 10, 11, 12, 13, 14, 15, 16, 17, 18, 19 mm
1/4" Drive Chrome Ratchet
1/4" Drive Extension 2"
1/4" Drive Extension 4"
3/8" Drive Chrome Ratchet
3/8" Drive Extension 3"
3/8" Drive Extension 6"
3/8" Drive Torque Wrench
1/4" Drive Swivel Head Ratchet
1/4" Drive Stubby Ratchet
1/4" Universal Joint
3/8" Drive Stubby Ratchet
3/8" Flex Head Ratchet
3/8" Universal Joint
Combination Wrenches *SAE*: 1/4", 5/16", 3/8", 7/16", 1/2",
9/16", 5/8", 11/16", 3/4", 13/16", 7/8", 15/16"
Combination Wrenches *Metric*: 9, 10, 11, 12, 13, 14, 15, 16,
17, 18, 19 mm
Slotted Stubby Screwdrivers: 1/4"
Slotted Screwdrivers: 3/16", 1/4", 3/8"
Phillips® Stubby Screwdrivers: #1, #2
Phillips® Screwdrivers: #1, #2, #3
Pin Punch: 1/16", 3/32", 1/8", 5/32", 3/16", 1/4", 5/16"
Centre Punch: 1/4"
Cold Chisel: 5/16", 1/2", 5/8", 3/4", 7/8"
Hex Keys *Metric*: 1.5, 2, 2.5, 3, 4, 5, 6 mm
Hex Keys *SAE*: 5/64", 3/32", 7/64", 1/8", 9/64", 5/32", 3/16", 7/32",
1/4"
10" Locking Plier Curved Jaw
10" Locking Plier Straight Jaw
11" Locking Clamp
9" Welding Clamp
9" Locking Plier Long Nose
8" Linesman Pliers Comfort Grip
6" Long Nose Pliers
7" Diagonal Cutting Pliers
9-1/2" Groove Joint Pliers
Ball Pein Hammer: 16 oz, 32 oz
2 lb Dead Blow Hammer
12" Hacksaw

Master Sets With Foam Organizers



21-7/8" (w) x 15" (d) x 1-1/4" (h)

1/4", 3/8" & 1/2" Drive Sockets & Attachments

D096001-FT1T

1/4" Drive Extensions: 2", 4", 6"

1/4" Drive Hand Driver

1/4", 3/8" & 1/2" Drive Quick Release Ratchets

1/4" Drive Swivel Head Ratchet

1/4", 3/8" Drive Stubby Ratchets

1/4", 3/8" Drive Sliding T-Handles

1/4" Drive Universal Joint

1/4", 3/8" Drive Flex Handles

1/4" Drive 6 Point Chrome Sockets: 5/32", 3/16", 7/32", 1/4",

9/32", 5/16", 11/32", 3/8", 7/16", 1/2", 9/16"

1/4" Drive 6 Point Chrome Sockets: 4, 5, 5.5, 6, 7, 8, 9, 10, 11,

12, 13, 14, 15 mm

3/8" Drive Extensions: 3", 6", 10"

3/8" Drive 6 Point Sockets: 1/4", 5/16", 3/8", 7/16", 1/2",

9/16", 5/8", 11/16", 3/4", 13/16", 7/8", 15/16", 1"

3/8" Drive 6 Point Sockets: 6, 7, 8, 9, 10, 11, 12, 13, 14, 15, 16,

17, 18, 19 mm

1/2" Drive Extensions: 5", 10"

1/2" Drive T-Handle Head

1/2" Drive 6 Point Sockets: 3/8", 7/16", 1/2", 9/16", 5/8",

11/16", 3/4", 13/16", 7/8", 15/16", 1", 1-1/16", 1-1/8", 1-3/16",

1-1/4", 1-5/16"

1/2" Drive 6 Point Sockets: 10, 11, 12, 13, 14, 15, 16, 17, 18,

19, 20, 21, 22, 23, 24, 25, 26, 27, 28 mm

Foam Tray Organizer



21-7/8" (w) x 15" (d) x 1-1/4" (h)

SAE & Metric Chrome Combination Wrenches

D096001-FT2T

Combination Wrenches-*SAE*, 12 Point: 1/4", 5/16", 3/8",

7/16", 1/2", 9/16", 5/8", 11/16", 3/4", 13/16", 7/8", 15/16", 1",

1-1/16", 1-1/8", 1-1/4"

Combination Wrenches-*Metric*, 12 Point: 6, 7, 8, 9, 10, 11,

12, 13, 14, 15, 16, 17, 18, 19, 20, 21, 22, 23, 24 mm

Foam Tray Organizer

Master Sets With Foam Organizers



21-7/8" (w) x 15" (d) x 1-1/4" (h)

Screwdrivers & Ratcheting Wrenches

D096001-FT3T

Slotted Screwdrivers: 5/32", 3/16", 1/4", 5/16", 3/8"

Slotted Stubby Screwdriver: 1/4"

Phillips® Screwdrivers: #0, 1, 2, 3

Phillips® Stubby Screwdriver: #2

Square Recess Screwdrivers: #0, 1, 2, 3

Stubby Square Recess Screwdrivers: #1, 2

Magnetic Bit Holder Comfort Handle

14 Piece Screwdriver Bit Set

Circuit Tester

Reversible Ratcheting Wrenches SAE: 5/16", 3/8", 7/16", 1/2", 9/16", 5/8", 11/16", 3/4"

Reversible Ratcheting Wrenches Metric: 8, 9, 10, 11, 12, 13, 14, 15, 16, 17, 18, 19 mm

Foam Tray Organizer



21-7/8" (w) x 15" (d) x 1-1/4" (h)

Screwdrivers, Nut Drivers, Punches & Chisels

D096001-FT4T

Pin Punches: 1/8", 3/16", 1/4"

Drift Punches: 3/16", 1/4"

Solid Punches: 1/8", 3/16", 1/4"

Centre Punches: 1/8", 5/32", 1/4"

Cold Chisels: 5/16", 1/2", 5/8", 3/4", 7/8"

Nut Drivers SAE: 3/16", 1/4", 5/16", 11/32", 3/8", 7/16", 1/2"

Nut Drivers Metric: 5, 6, 7, 8, 9, 10, 11 mm

Offset Phillips®: #1, 2

Offset Slotted: 3/16" x 1/4"

Offset Square Recess: #1, 2

Slotted Precision Screwdrivers: 1.4, 2, 2.4, 3

Phillips® Precision Screwdrivers: #000, 00, 0

Foam Tray Organizer

Master Sets With Foam Organizers



21-7/8" (w) x 15" (d) x 1-1/4" (h)

Hammers & Pliers

D096001-FT5T

1 lb. Rubber Mallet- Hickory Handle
16 oz. Claw Hammer- Fiberglass Handle
16 oz. Ball Pein Hammer - Fiberglass Handle
2-1/2 lb. Club Hammer- Fiberglass Handle
14 oz. Soft Face Hammer
7" Diagonal Cutting Pliers - Comfort Grip

8" Long Nose Pliers - Comfort Grip
8" Bent Nose Pliers - Comfort Grip
8" Slip Joint Pliers - Comfort Grip
8" Linesman Pliers - Comfort Grip
Foam Tray Organizer



21-7/8" (w) x 15" (d) x 1-1/4" (h)

1/4", 3/8" Drive Sockets & Attachments & Torque Wrench

D096004-FT1T

1/4" Drive Extensions: 2", 4"
1/4" Drive 45 Tooth Quick Release Ratchet
1/4" Drive Swivel Head Ratchet
1/4" Drive Stubby Ratchet
1/4" Drive Universal Joint
1/4" Drive 6 Point Sockets: 5/32", 3/16", 7/32", 1/4", 9/32",
5/16", 11/32", 3/8", 7/16", 1/2", 9/16"
1/4" Drive 6 Point Sockets: 4, 5, 5.5, 6, 7, 8, 9, 10, 11, 12, 13, 14, 15 mm
3/8" Drive Extensions: 3", 6"
3/8" Drive 45 Tooth Quick Release Ratchet

3/8" Drive Stubby Ratchet
3/8" Drive Flex Head Ratchet
3/8" Drive Universal Joint
3/8" Drive 6 Point Sockets: 1/4", 5/16", 3/8", 7/16", 1/2",
9/16", 5/8", 11/16", 3/4", 13/16", 7/8", 15/16", 1"
3/8" Drive 6 Point Sockets: 6, 7, 8, 9, 10, 11, 12, 13, 14, 15, 16,
17, 18, 19 mm
3/8" Drive Torque Wrench 100 ft/lb
Foam Tray Organizer

Master Sets With Foam Organizers



21-7/8" (w) x 15" (d) x 1-1/4" (h)

Hammers & Hacksaw

D096004-FT2T

12" Hacksaw With Blade
16 oz. Ball Pein Hammer - Fiberglass Handle
32 oz. Ball Pein Hammer - Fiberglass Handle

Dead Blow Hammer
Foam Tray Organizer



21-7/8" (w) x 15" (d) x 1-1/4" (h)

Pliers

D096004-FT3T

7" Diagonal Cutting Pliers - Comfort Handle
6" Long Nose Pliers - Comfort Handle
9-1/2" Groove Joint Pliers - Comfort Handle
8" Linesman Pliers - Comfort Handle
10" Curved Jaw - Locking Plier

10" Straight Jaw - Locking Plier
11" Locking Clamp With Swivel Pad
9" Long Nose - Locking Plier
9" Locking Welding Clamp
Foam Tray Organizer

Master Sets With Foam Organizers



21-7/8" (w) x 15" (d) x 1-1/4" (h)

Screwdrivers, Hex Keys, Punches & Chisels

D096004-FT4T

9 Piece SAE Folding Hex Key Set

7 Piece Metric Folding Hex Key Set

Pin Punches: 1/16", 3/32", 1/8", 5/32", 3/16", 1/4", 5/16"

Centre Punch: 1/4"

Cold Chisels: 5/16", 1/2", 5/8", 3/4", 7/8"

Slotted Screwdrivers: 3/16", 1/4", 3/8"

Slotted Stubby Screwdriver: 1/4"

Phillips® Screwdrivers: #1, 2, 3

Phillips® Stubby Screwdrivers: #1, 2

Foam Tray Organizer



21-7/8" (w) x 15" (d) x 1-1/4" (h)

SAE & Metric Chrome Combination Wrenches

D096004-FT5T

Combination Wrenches - SAE, 12 Point: 1/4", 5/16", 3/8", 7/16", 1/2", 9/16", 5/8", 11/16", 3/4", 13/16", 7/8", 15/16"

Combination Wrenches - Metric, 12 Point: 9, 10, 11, 12, 13, 14, 15, 16, 17, 18, 19 mm

Foam Tray Organizer

Master Sets With Foam Organizers



11-1/2" (w) x 15" (d) x 1-1/4" (h)

1/4", 3/8" & 1/2" Drive Metric Deep Chrome Sockets

D096001-FT6T

1/4" Drive 6 Point Deep Sockets: 4, 5, 5.5, 6, 7, 8, 9, 10, 11, 12, 13, 14 mm

3/8" Drive 6 Point Deep Sockets: 6, 7, 8, 9, 10, 11, 12, 13, 14, 15, 16, 17, 18, 19 mm

1/2" Drive 6 Point Deep Sockets: 10, 11, 12, 13, 14, 15, 16, 17, 18, 19, 20, 21, 22, 23, 24, 25, 26, 27, 28 mm

Foam Tray Organizer



11-1/2" (w) x 15" (d) x 1-1/4" (h)

1/4", 3/8" & 1/2" Drive SAE Deep Chrome Sockets

D096001-FT7T

1/4" Drive 6 Point Deep Sockets: 3/16", 7/32", 1/4", 9/32", 5/16", 11/32", 3/8", 7/16", 1/2", 9/16"

3/8" Drive 6 Point Deep Sockets: 1/4", 5/16", 3/8", 7/16", 1/2", 9/16", 5/8", 11/16", 3/4", 13/16", 7/8", 15/16", 1"

1/2" Drive 6 Point Deep Sockets: 3/8", 7/16", 1/2", 9/16", 5/8", 11/16", 3/4", 13/16", 7/8", 15/16", 1", 1-1/16", 1-1/8", 1-3/16", 1-1/4", 1-5/16"

Foam Tray Organizer

Master Sets With Foam Organizers



11-1/2" (w) x 15" (d) x 1-1/4" (h)

Aviation Snips & Adjustable Wrenches

D096001-FT8T

Aviation Snip - Cuts Right
Aviation Snip - Cuts Straight
Aviation Snip - Cuts Left

8" Adjustable Wrench
10" Adjustable Wrench
Foam Tray Organizer



11-1/2" (w) x 15" (d) x 1-1/4" (h)

Locking Pliers & Hex Key Set

D096001-FT9T

30 Piece SAE & Metric Hex Key Set
5" Curved Jaw With Wire Cutter - Locking Plier
7" Curved Jaw With Wire Cutter - Locking Plier
10" Curved Jaw - Locking Plier

10" Straight Jaw - Locking Plier
6" Long Nose Locking Plier
Foam Tray Organizer

Field Technician Sets with Foam Organizers



With foam trays



Without foam trays

38 Piece Field Technician Tool Set

D105001

D105201 Medium Mobility Case
 D105104 Hex Keys, Locking Pliers & Adjustable Wrenches
 in Foam Tray Organizer

D105105 Pliers in Foam Tray Organizer
 D105106 Screwdrivers in Foam Tray Organizer
 D105107 SAE Combination Wrenches in Foam
 Tray Organizer



With foam trays



Without foam trays

139 Piece Field Technician Tool Set

D105002

D105202 Large Mobility Case
 D105101 3/8" & 1/2" Drive Ratchets & Accessories in
 Foam Tray Organizer
 D105102 3/8" Drive Socket in Foam Tray Organizer
 D105103 1/2" Drive Socket in Foam Tray Organizer
 D105104 Hex Keys, Locking Pliers & Adjustable Wrenches in
 Foam Tray Organizer

D105105 Pliers in Foam Tray Organizer
 D105106 Screwdrivers in Foam Tray Organizer
 D105107 SAE Combination Wrenches in Foam
 Tray Organizer
 D105108 Metric Combination Wrenches in Foam
 Tray Organizer

Field Technician Sets with Foam Organizers



11-1/4" (w) x 13-1/4" (d) x 1-1/2" (h)

3/8" & 1/2" Drive Ratchets & Accessories

D105101

3/8" Drive 3" Extension

3/8" Drive 6" Extension

3/8" Drive Quick Release Ratchet

3/8" Drive Universal Joint

3/8" Drive Flex Handle

1/2" Drive 5" Extension

1/2" Drive 10" Extension

1/2" Drive 45 Tooth Chrome Ratchet

Foam Tray Organizer



11-1/4" (w) x 13-1/4" (d) x 1-1/2" (h)

3/8" Drive Sockets

D105102

3/8" Drive 6 Point Sockets SAE: 5/16", 3/8", 7/16", 1/2",
9/16", 5/8", 11/16", 3/4", 13/16", 7/8", 15/16", 1"

3/8" Drive 6 Point Sockets Metric: 8, 9, 10, 11, 12, 13, 14, 15,
16, 17, 18, 19, 20 mm

3/8" Drive Hex Bit Sockets SAE: 1/8", 5/32", 3/16", 7/32",
1/4", 5/16", 3/8"

3/8" Drive Hex Bit Sockets Metric: 4, 5, 6, 7, 8, 9, 10 mm
Foam Tray Organizer

Field Technician Sets with Foam Organizers



11-1/4" (w) x 13-1/4" (d) x 1-1/2" (h)

1/2" Drive Sockets

D105103

1/2" Drive 6 Point Sockets SAE: 3/8", 7/16", 1/2", 9/16", 5/8", 11/16", 3/4", 13/16", 7/8", 15/16", 1"

1/2" Drive 6 Point Sockets Metric: 10, 11, 12, 13, 14, 15, 16, 17, 18, 19, 20 mm

1/2" Drive Hex Bit Sockets SAE: 1/4", 5/16", 3/8", 7/16", 1/2", 9/16", 5/8", 3/4"

1/2" Drive Hex Bit Sockets Metric: 6, 8, 10, 12, 14, 17, 19 mm
Foam Tray Organizer



11-1/4" (w) x 13-1/4" (d) x 1-1/2" (h)

Hex Keys, Locking Pliers & Adjustable Wrenches

D105104

30 Piece SAE & Metric Hex Key Set

8" Adjustable Wrench

10" Adjustable Wrench

10" Curved Jaws With Wire Cutter

6" Long Nose Locking Plier

Foam Tray Organizer

Field Technician Sets with Foam Organizers



11-1/4" (w) x 13-1/4" (d) x 1-1/2" (h)

Pliers

D105105

7" Diagonal Cutting Pliers - Comfort Handles
8" Long Nose Pliers - Comfort Handles
6" Slip Joint Pliers - Comfort Handles
9-1/2" Groove Joint Pliers - Comfort Handles

8" Linesman Pliers - Comfort Handles
8-1/4" Wire Stripper/Cutter - Comfort Handles
Foam Tray Organizer



11-1/4" (w) x 13-1/4" (d) x 1-1/2" (h)

Screwdrivers

D105106

Slotted Screwdrivers: 1/8", 1/4", 3/8"
Phillips® Screwdrivers: #1, 2, 3

Square Recess Screwdrivers: #1, 2, 3
Foam Tray Organizer

Field Technician Sets with Foam Organizers



11-1/4" (w) x 13-1/4" (d) x 1-1/2" (h)

SAE Combination Wrenches

D105107

Combination Wrenches - SAE, 12 Point: 1/4", 5/16", 3/8", 7/16", 1/2", 9/16", 5/8", 11/16", 3/4", 13/16", 7/8", 15/16", 1"
Foam Tray Organizer



11-1/4" (w) x 13-1/4" (d) x 1-1/2" (h)

Metric Combination Wrenches

D105108

Combination Wrenches - Metric, 12 Point: 8, 9, 10, 11, 12, 13, 14, 15, 16, 17, 18, 19, 20mm
Foam Tray Organizer

367 Piece Advanced Master Set

D096001



For complete set content see page 22

283 Piece Intermediate Master Set

D096002



For complete set content see page 23

198 Piece Starter Master Set

D096003



For complete set content see page 24

Master Sets

367 Piece Advanced Master Set

D096001

1/4" Drive Extension 2"
1/4" Drive Extension 4"
1/4" Drive Extension 6"
1/4" Drive Spinner Handle
1/4" Drive 45 Tooth Ratchet- Chrome Handle
1/4" Drive Swivel Head Ratchet
1/4" Drive Stubby Ratchet
1/4" Drive Sliding T-Handle
1/4" Drive Universal Joint
1/4" Drive Flex Handle
1/4" Drive Chrome Sockets-Metric, 6 Point, Regular Length: 4, 5, 5.5, 6, 7, 8, 9, 10, 11, 12, 13, 14, 15 mm
1/4" Drive Chrome Sockets-Metric, 6 Point, Deep: 4, 5, 5.5, 6, 7, 8, 9, 10, 11, 12, 13, 14 mm
1/4" Drive Chrome Sockets-SAE, 6 Point, Regular Length: 5/32", 3/16", 7/32", 1/4", 9/32", 5/16", 11/32", 3/8", 7/16", 1/2", 9/16"
1/4" Drive Chrome Sockets-SAE, 6 Point, Deep: 3/16", 7/32", 1/4", 9/32", 5/16", 11/32", 3/8", 7/16", 1/2", 9/16"
3/8" Drive Extension 3"
3/8" Drive Extension 6"
3/8" Drive Extension 10"
3/8" Drive 45 Tooth Ratchet
3/8" Drive Stubby Ratchet
3/8" Sliding T-Handle
3/8" Flex Handle
3/8" Drive Chrome Sockets-Metric, 6 Point, Regular Length: 6, 7, 8, 9, 10, 11, 12, 13, 14, 15, 16, 17, 18, 19 mm
3/8" Drive Chrome Sockets-Metric, 6 Point, Deep: 6, 7, 8, 9, 10, 11, 12, 13, 14, 15, 16, 17, 18, 19 mm
3/8" Drive Chrome Sockets-SAE, 6 Point, Regular Length: 1/4", 5/16", 3/8", 7/16", 1/2", 9/16", 5/8", 11/16", 3/4", 13/16", 7/8", 15/16", 1"
3/8" Drive Chrome Sockets-SAE, 6 Point, Deep: 1/4", 5/16", 3/8", 7/16", 1/2", 9/16", 5/8", 11/16", 3/4", 13/16", 7/8", 15/16", 1"
1/2" Drive Extension 5"
1/2" Drive Extension 10"
1/2" Drive T-Handle Head
1/2" Drive 45 Tooth Ratchet
1/2" Drive Chrome Sockets-Metric, 6 Point, Regular Length: 10, 11, 12, 13, 14, 15, 16, 17, 18, 19, 20, 21, 22, 23, 24, 25, 26, 27, 28 mm
1/2" Drive Chrome Sockets-Metric, 6 Point, Deep: 10, 11, 12, 13, 14, 15, 16, 17, 18, 19, 20, 21, 22, 23, 24, 25, 26, 27, 28 mm
1/2" Drive Chrome Sockets-SAE, 6 Point, Regular Length: 3/8", 7/16", 1/2", 9/16", 5/8", 11/16", 3/4", 13/16", 7/8", 15/16", 1", 1-1/16", 1-1/8", 1-3/16", 1-1/4", 1-5/16"
1/2" Drive Chrome Sockets-SAE, 6 Point, Deep: 3/8", 7/16", 1/2", 9/16", 5/8", 11/16", 3/4", 13/16", 7/8", 15/16", 1", 1-1/16", 1-1/8", 1-3/16", 1-1/4", 1-5/16"
1.5 lb Rubber Mallet-Hickory Handle
16 oz Claw Hammer-Fiberglass Handle
16 oz Ball Pein Hammer-Fiberglass Handle
2 1/2 lb Club Hammer-Fiberglass Handle
14 oz Soft Face Hammer
Metric Hex-Keys-Regular Length: 0.7, 0.9, 1.3, 1.5, 2, 2.5, 3, 4, 4.5, 5, 5.5, 6, 7, 8, 10 mm
SAE Hex Keys-Long: 0.028", 0.035", 0.05", 1/16", 5/64", 3/32", 7/64", 1/8", 9/64", 5/32", 3/16", 7/32", 1/4", 5/16", 3/8"
8" Linesman Pliers Comfort Grip
7" Diagonal Cutting Pliers Comfort Grip
8" Long Nose Pliers Comfort Grip
8" Bent Nose Pliers Comfort Grip
8" Slip Joint Pliers Comfort Grip
Aviation Snip-Cuts Right
Aviation Snip-Cuts Straight
Aviation Snip-Cuts Left
10" Locking Plier Straight Jaws
10" Locking Plier Curved Jaws
7" Locking Plier-Curved Jaws With Wire Cutter
6" Locking Pliers-Long Nose
5" Locking Plier-Curved Jaws With Wire Cutter
Cold Chisel 5/16", 1/2", 5/8", 3/4", 7/8"
Centre Punch 1/8", 5/32", 1/4"
Solid Punch 1/8", 3/16", 1/4"
Drift Punch 3/16", 1/4"
Pin Punch 1/8", 3/16", 1/4"
Nut Drivers SAE: 3/16", 1/4", 5/16", 11/32", 3/8", 7/16", 1/2"
Nut Drivers Metric: 5, 6, 7, 8, 9, 10, 11 mm
Phillips® Screwdrivers: #0, 1, 2, 3
Phillips® Stubby Screwdrivers: #2
Slotted Screwdrivers: 5/32", 3/16", 1/4", 5/16", 3/8"
Slotted Stubby Screwdrivers: 1/4"
Square Recess Screwdrivers: #0, 1, 2, 3
Square Recess Stubby Screwdrivers: #1, 2
Offset Phillips® Screwdrivers: #1, 2
Offset Slotted Screwdrivers: 3/16", 1/4"
Offset Square Recess Screwdrivers: #1, 2
Circuit Tester 110V
Magnetic Bit Holder
Tamper Torx® Bits: T10, T15, T20, T25, T27, T30, T40
Hex Bits: 2, 2.5, 3, 4, 5, 6, 8
Phillips® Precision Screwdrivers: PH000, PH00, PH0
Slotted Precision Screwdrivers: 3/64", 5/64", 3/32", 1/8"
Adjustable Wrench: 8", 10"
Combination Wrenches SAE: 3/8", 7/16", 1/2", 9/16", 5/8", 11/16", 3/4", 13/16", 7/8", 15/16", 1", 1-1/16", 1-1/8", 1-1/4"
Combination Wrenches Metric: 6, 7, 8, 9, 10, 11, 12, 13, 14, 15, 16, 17, 18, 19, 20, 21, 22, 23, 24 mm
Reversible Ratcheting Wrenches SAE: 5/16", 3/8", 7/16", 1/2", 9/16", 5/8", 11/16", 3/4"
Reversible Ratcheting Wrenches Metric: 8, 9, 10, 11, 12, 13, 14, 15, 16, 17, 18, 19 mm

283 Piece Intermediate Master Set

D096002

1/4" Drive Extension 2"
1/4" Drive Extension 4"
1/4" Drive Extension 6"
1/4" Drive Spinner Handle
1/4" Drive 45 Tooth Ratchet- Chrome Handle
1/4" Drive Swivel Head Ratchet
1/4" Drive Stubby Ratchet
1/4" Drive Sliding T-Handle
1/4" Drive Universal Joint
1/4" Drive Flex Handle
1/4" Drive Chrome Sockets-Metric, 6 Point, Regular Length:
4, 5, 5.5, 6, 7, 8, 9, 10, 11, 12, 13, 14, 15 mm
1/4" Drive Chrome Sockets-SAE, 6 Point, Regular Length:
5/32", 3/16", 7/32", 1/4", 9/32", 5/16", 11/32", 3/8", 7/16",
1/2", 9/16"
3/8" Drive Extension 3"
3/8" Drive Extension 6"
3/8" Drive Extension 10"
3/8" Drive 45 Tooth Ratchet
3/8" Drive Stubby Ratchet
3/8" Sliding T-Handle
3/8" Flex Handle
3/8" Drive Chrome Sockets-Metric, 6 Point, Regular Length:
6, 7, 8, 9, 10, 11, 12, 13, 14, 15, 16, 17, 18, 19 mm
3/8" Drive Chrome Sockets-SAE, 6 Point, Regular Length:
1/4", 5/16", 3/8", 7/16", 1/2", 9/16", 5/8", 11/16", 3/4", 13/16",
7/8", 15/16", 1"
1/2" Drive Extension 5"
1/2" Drive Extension 10"
1/2" Drive T-Handle Head
1/2" Drive 45 Tooth Ratchet
1/2" Drive Chrome Sockets-Metric, 6 Point, Regular Length:
10, 11, 12, 13, 14, 15, 16, 17, 18, 19, 20, 21, 22, 23, 24, 25, 26,
27, 28 mm
1/2" Drive Chrome Sockets-SAE, 6 Point, Regular Length:
3/8", 7/16", 1/2", 9/16", 5/8", 11/16", 3/4", 13/16", 7/8",
15/16", 1", 1 -1/16", 1-1/8", 1-3/16", 1-1/4", 1-5/16"
1.5 lb Rubber Mallet-Hickory Handle
16 oz Claw Hammer-Fiberglass Handle
16 oz Ball Pein Hammer-Fiberglass Handle
2 1/2 lb Club Hammer-Fiberglass Handle
14 oz Soft Face Hammer
Metric Hex-Keys-Regular Length: 0.7, 0.9, 1.3, 1.5, 2, 2.5, 3, 4,
4.5, 5, 5.5, 6, 7, 8, 10 mm
SAE Hex Keys-Long: 0.028", 0.035", 0.05", 1/16", 5/64", 3/32",
7/64", 1/8", 9/64", 5/32", 3/16", 7/32", 1/4", 5/16", 3/8"
8" Linesman Pliers Comfort Grip
7" Diagonal Cutting Pliers Comfort Grip
8" Long Nose Pliers Comfort Grip
8" Bent Nose Pliers Comfort Grip
8" Slip Joint Pliers Comfort Grip
Aviation Snip-Cuts Right
Aviation Snip-Cuts Straight
Aviation Snip-Cuts Left
10" Locking Plier Straight Jaws
10" Locking Plier Curved Jaws
7" Locking Plier-Curved Jaws With Wire Cutter
6" Locking Pliers-Long Nose
5" Locking Plier-Curved Jaws With Wire Cutter
Cold Chisel 5/16", 1/2", 5/8", 3/4", 7/8"
Centre Punch 1/8", 5/32", 1/4"
Solid Punch 1/8", 3/16", 1/4"
Drift Punch 3/16", 1/4"
Pin Punch 1/8", 3/16", 1/4"
Nut Drivers SAE:3/16", 1/4", 5/16", 11/32", 3/8", 7/16", 1/2"
Nut Drivers Metric: 5, 6, 7, 8, 9, 10, 11 mm
Phillips® Screwdrivers: #0, 1, 2, 3
Phillips® Stubby Screwdrivers: #2
Slotted Screwdrivers: 5/32", 3/16", 1/4", 5/16", 3/8"
Slotted Stubby Screwdrivers: 1/4"
Square Recess Screwdrivers: #0,1,2,3
Square Recess Stubby Screwdrivers: #1,2
Offset Phillips® Screwdrivers: #1,2
Offset Slotted Screwdrivers: 3/16", 1/4"
Offset Square Recess Screwdrivers: #1, 2
Circuit Tester 110V
Magnetic Bit Holder
Tamper Torx® Bits: T10, T15, T20, T25, T27, T30, T40
Hex Bits: 2, 2.5, 3, 4, 5, 6, 8
Phillips® Precision Screwdrivers: PH000, PH00, PH0
Slotted Precision Screwdrivers: 3/64", 5/64", 3/32", 1/8"
Adjustable Wrench: 8", 10"
Combination Wrenches SAE: 3/8", 7/16", 1/2", 9/16", 5/8",
11/16", 3/4", 13/16", 7/8", 15/16", 1", 1-1/16", 1-1/8", 1-1/4"
Combination Wrenches Metric: 6, 7, 8, 9, 10, 11, 12, 13, 14,
15, 16, 17, 18, 19, 20, 21, 22, 23, 24 mm
Reversible Ratcheting Wrenches SAE: 5/16", 3/8", 7/16",
1/2", 9/16", 5/8", 11/16", 3/4"
Reversible Ratcheting Wrenches Metric: 8, 9, 10, 11, 12, 13,
14, 15, 16, 17, 18, 19 mm

Master Sets

198 Piece Starter Master Set

D096003

1/4" Drive Extension 2"
1/4" Drive Extension 4"
1/4" Drive Extension 6"
1/4" Drive Spinner Handle
1/4" Drive 45 Tooth Ratchet- Chrome Handle
1/4" Drive Swivel Head Ratchet
1/4" Drive Stubby Ratchet
1/4" Drive Sliding T-Handle
1/4" Drive Universal Joint
1/4" Drive Flex Handle
1/4" Drive Chrome Sockets-Metric, 6 Point, Regular Length:
4, 5, 5.5, 6, 7, 8, 9, 10, 11, 12, 13, 14, 15 mm
1/4" Drive Chrome Sockets-SAE, 6 Point, Regular Length:
5/32", 3/16", 7/32", 1/4", 9/32", 5/16", 11/32", 3/8", 7/16",
1/2", 9/16"
3/8" Drive Extension 3"
3/8" Drive Extension 6"
3/8" Drive Extension 10"
3/8" Drive 45 Tooth Ratchet
3/8" Drive Stubby Ratchet
3/8" Sliding T-Handle
3/8" Flex Handle
3/8" Drive Chrome Sockets-Metric, 6 Point, Regular Length:
6, 7, 8, 9, 10, 11, 12, 13, 14, 15, 16, 17, 18, 19 mm
3/8" Drive Chrome Sockets-SAE, 6 Point, Regular Length:
1/4", 5/16", 3/8", 7/16", 1/2", 9/16", 5/8", 11/16", 3/4", 13/16",
7/8", 15/16", 1"
1/2" Drive Extension 5"
1/2" Drive Extension 10"
1/2" Drive T-Handle Head
1/2" Drive 45 Tooth Ratchet
1/2" Drive Chrome Sockets-Metric, 6 Point, Regular Length:
10, 11, 12, 13, 14, 15, 16, 17, 18, 19, 20, 21, 22, 23, 24, 25, 26,
27, 28 mm
1/2" Drive Chrome Sockets-SAE, 6 Point, Regular Length:
3/8", 7/16", 1/2", 9/16", 5/8", 11/16", 3/4", 13/16", 7/8",
15/16", 1", 1 -1/16", 1-1/8", 1-3/16", 1-1/4", 1-5/16"
1.5 lb Rubber Mallet-Hickory Handle
16 oz Claw Hammer-Fiberglass Handle
16 oz Ball Pein Hammer-Fiberglass Handle
2 1/2 lb Club Hammer-Fiberglass Handle
14 oz Soft Face Hammer
Metric Hex-Keys-Regular Length: 0.7, 0.9, 1.3, 1.5, 2, 2.5, 3, 4,
4.5, 5, 5.5, 6, 7, 8, 10 mm
SAE Hex Keys-Long: 0.028", 0.035", 0.05", 1/16", 5/64", 3/32",
7/64", 1/8", 9/64", 5/32", 3/16", 7/32", 1/4", 5/16", 3/8"
8" Linesman Pliers Comfort Grip
7" Diagonal Cutting Pliers Comfort Grip
8" Long Nose Pliers Comfort Grip
8" Bent Nose Pliers Comfort Grip
8" Slip Joint Pliers Comfort Grip
Cold Chisels: 1/2", 5/8", 3/4"
Centre Punch: 5/32"
Solid Punch: 3/16"
Pin Punch 1/8", 3/16", 1/4"
Phillips® Screwdrivers: #1, 2
Slotted Screwdrivers: 1/8", 5/32", 1/4", 5/16", 3/8"
Square Recess Screwdrivers: #1, 2
8" Adjustable Wrench
Combination Wrenches SAE: 3/8", 7/16", 1/2", 9/16", 5/8",
11/16", 3/4", 13/16", 7/8", 15/16", 1", 1-1/16", 1-1/8", 1-1/4"
Combination Wrenches Metric: 6, 7, 8, 9, 10, 11, 12, 13, 14,
15, 16, 17, 18, 19, 20, 21, 22, 23, 24 mm

Tool Storage



Smooth Operation

All toolboxes feature ball bearing slides for smooth drawer opening and closing.

Attractive Design

Bold colour scheme and easy to clean powder coat finish.

Professional Grade

Heavy duty steel construction.

Easy Maneuvering

Needle bearing casters with 360° brakes.

Superior Tool Protection

Tubular lock and key for maximum safety.



28" Roller Cabinet - 7 Drawers

Part No. D069201

- 2 Swivel/2 Fixed 5" x 2" casters
- Capacity 8,881 cubic in.
- Net Weight 129 lbs.
- Shipping Weight 137 lbs.
- D069570 Lock & key included
- D069505 Drawer liner kit included
- D069605 Top mat included
- D069500 Ball bearing slides (pair) - small drawer
- D069501 Ball bearing slides (pair) - big drawer

	Width (inches)	Depth (inches)	Height (inches)
Overall w/ Casters	28.00	18.00	40.00
5 Drawers	22.25	15.50	2.75
2 Drawers	22.25	15.50	6.00

28" Roller Cabinet - 10 Drawers

Part No. D069206

- 2 Swivel/2 Fixed 5" x 2" casters
- Capacity 10,845 cu in.
- Net Weight 163 lbs.
- Shipping Weight 171 lbs.
- D069570 Lock & key included
- D069580 Drawer liner kit included
- D069605 Top mat included
- D069500 Ball bearing slides (pair) - small drawer
- D069501 Ball bearing slides (pair) - big drawer

	Width (inches)	Depth (inches)	Height (inches)
Overall w/ Casters	28.00	18.00	43.25
4 Drawers	10.50	15.50	2.75
4 Drawers	22.25	15.50	2.75
2 Drawers	22.25	15.50	6.00



42" Roller Cabinet - 12 Drawers

Part No. D069203

- 2 Swivel/2 Fixed 5" x 2" casters
- Capacity 13,378 cubic in.
- Net Weight 220 lbs.
- Shipping Weight 231 lbs.
- D069572 Lock & key included
- D069507 Drawer liner kit included
- D069601 Top mat included
- D069501 Ball bearing slides (pair)

	Width (inches)	Depth (inches)	Height (inches)
Overall w/ Casters	42.00	18.00	41.00
1 Drawer	36.50	15.50	5.25
5 Drawers	22.25	15.50	2.75
4 Drawers	12.00	15.50	2.75
1 Drawer	22.25	15.50	6.00
1 Drawer	10.75	15.50	8.75



36" Roller Cabinet - 8 Drawers

Part No. D069207

- 2 Swivel/2 Fixed 5" x 2" casters
- Capacity 9,821 cu in.
- Net Weight 195 lbs.
- Shipping Weight 203 lbs.
- D069570 Lock & key included
- D069581 Drawer liner kit included
- D069606 Top mat included
- D069500 Ball bearing slides (pair) - small drawer
- D069501 Ball bearing slides (pair) - big drawer

Accessories not included

	Width (inches)	Depth (inches)	Height (inches)
Overall w/ Casters	36.00	18.00	39.33
2 Drawers	10.50	15.92	3.00
4 Drawers	22.72	15.92	3.00
2 Drawers	22.72	15.92	6.16



16" Side Rider - 6 Drawers

Part No. D069205

- Capacity: 4,170 cubic in.
 - Net Weight: 77 lbs.
 - Shipping Weight: 84 lbs.
 - D069574 Lock & key included
 - D069509 Drawer liner kit included
 - D069602 Top mat included
 - D069500 Ball bearing slides (pair)
- * Can be installed on the right or left.

	Width (inches)	Depth (inches)	Height (inches)
Overall	18.00	18.00	33.75
3 Drawers	10.25	15.50	2.75
3 Drawers	10.25	15.50	6.00

Tool Storage



28" Top Chest - 8 Drawers

Part No. D069202

Capacity: 5,876 cubic in.
 Net Weight: 99 lbs.
 Shipping Weight: 105 lbs.
 D069571 Lock & key included
 D069506 Drawer liner kit included
 D069500 Ball bearing slides (pair)

	Width (inches)	Depth (inches)	Height (inches)
Overall	28.00	18.00	20.00
3 Drawers	6.50	15.50	2.00
4 Drawers	22.25	15.50	2.00
1 Drawer	22.25	15.50	4.00

28" Top Chest - 9 Drawers

Part No. D069208

Capacity: 4,942 cu in.
 Net Weight: 103 lbs.
 Shipping Weight: 108 lbs.
 D069571 Lock & key included
 D069582 Drawer liner kit included
 D069500 Ball bearing slides (pair)

	Width (inches)	Depth (inches)	Height (inches)
Overall	28.00	18.00	20.00
6 Drawers	10.50	15.50	2.00
2 Drawers	22.25	15.50	2.00
1 Drawer	22.25	15.50	4.00



42" Top Chest - 8 Drawers

Part No. D069204

Capacity: 7,831 cubic in.
 Net Weight: 129 lbs.
 Shipping Weight: 139 lbs.
 D069573 Lock & key included
 D069508 Drawer liner kit included
 D069501 Ball bearing slides (pair)

	Width (inches)	Depth (inches)	Height (inches)
Overall	42.00	18.00	18.00
4 Drawers	22.25	15.50	2.75
4 Drawers	12.00	15.50	2.75

52" Industrial Cart - 12 Drawers

Part No. D069209

4 Swivel/2 Fixed 5" x 2" casters
 Capacity: 19,612 cu in.
 Net Weight: 378 lbs.
 Shipping Weight: 392 lbs.
 D069572 Lock & key included
 D069583 Drawer liner kit included
 D069607 PVC top mat included
 D069501 Ball bearing slides (pair)

	Width (inches)	Depth (inches)	Height (inches)
Overall	52.50	31.64	40.25
7 Drawers	30.12	15.67	2.95
1 Drawer	30.12	15.67	6.06
3 Drawers	24.76	15.67	2.95
1 Drawer	24.76	15.67	9.17



Reverse side shown

2 Tray Utility Cart

Part No. D069101

2 Swivel/2 Fixed 4" x 1" casters
 Net Weight 36 lbs.
 Shipping Weight 37.5 lbs.

	Width (inches)	Depth (inches)	Height (inches)
Overall w/ Casters	30	16	36

Middle Tray for D069101 (Optional)

Part No. D069103

Converts D069101 into a 3 tray utility cart

	Width (inches)	Depth (inches)	Height (inches)
Overall	30	16	3





3 Drawer Utility Cart

Part No. D069102

- 2 Swivel/2 Fixed 4" x 1" casters
- Net Weight 50 lbs.
- Shipping Weight 52 lbs.
- D069575 Lock & key included
- D069651 Drawer liner kit included
- D069603 Work top included
- D069498 Ball bearing slides (pair)

	Width (inches)	Depth (inches)	Height (inches)
Overall w/ Casters	27	18.5	36
3 Drawers	22.5	16	3

3 Drawer Hand Box with Ball Bearing Slides

Part No. D069001

- Capacity: 1,473 cubic in.
- Net Weight: 28 lbs.
- Shipping Weight: 30 lbs.
- D069650 Drawer liner kit
- D069499 Ball bearing slides (pair)

	Width (inches)	Depth (inches)	Height (inches)
Overall	20.00	10.00	12.00
1 Drawer	19.50	9.50	3.00
3 Drawers	17.00	9.00	2.00



20" Hip Roof Tool Box

Part No. D069002

- Capacity: 998 cubic in.
- Net Weight: 9 lbs.
- Shipping Weight: 10 lbs.
- Tote tray included

	Width (inches)	Depth (inches)	Height (inches)
Overall	19	7	7.5

Mobile Storage Cases

Features:

- Made of strong and lightweight impact resistant polypropylene
- Water-resistant, crushproof, and dustproof construction
- Includes 4 Pick N Pluck™ foam trays and convoluted foam inside lid
- Purge valve allows airflow and pressure control in and out
- Quiet and robust 2-1/4" casters for convenient rolling
- Comfortable rubber over-molded top and side handles
- Retractable extension handle for easy transport
- Large robust jam-free latches
- Padlock eyelets for extra security
- SGS tested



Large, robust jam-free latches



Comfortable rubber over-molded top and side handles



Padlock eyelets for extra security



Quiet and robust 2-1/4" casters for convenient rolling

Medium Water-Resistant Case

D105201

- Holds up to 4 field technician set trays (listed on pages 17-20)
- 22" (w) x 14" (d) x 11.4" (h) (exterior dimensions)
- Maximum weight capacity of 55 lbs.



Large Water-Resistant Case

D105202

- Holds up to 8 field technician set trays (listed on pages 17-20)
- 24.6" (w) x 16.5" (d) x 13.3" (h) (exterior dimensions)
- Maximum weight capacity of 66 lbs.

Sockets



Complete Assortment

Sockets are available in chrome, impact, hex, slotted, Phillips® and Torx®.

Large and Visible Markings

Laser etched markings improve size identification and provides SAE/Metric differentiation.

User-Friendly Design

Chrome sockets feature a knurl for improved grip (3/8" and 1/2" drive only).

Modern Finish

Electro-phosphate finish on impact sockets provides a cleaner and modern look.

Professional Grade

All sockets meet ANSI standards.

11 Piece 6 Point Standard SAE Socket Set

Part No. D004000



Set Content:

11 Standard SAE Sockets: 5/32", 3/16", 7/32", 1/4", 9/32", 5/16", 11/32", 3/8", 7/16", 1/2", 9/16"
Includes Rail.

10 Piece 6 Point Deep SAE Socket Set

Part No. D004001



Set Content:

10 Deep SAE Sockets: 3/16", 7/32", 1/4", 9/32", 5/16", 11/32", 3/8", 7/16", 1/2", 9/16"
Includes Rail.



Hand Sockets

10 Piece 12 Point Standard SAE Socket Set

Part No. D004007



Set Content:

10 Standard SAE Sockets: 3/16", 7/32", 1/4", 9/32", 5/16", 11/32", 3/8", 7/16", 1/2", 9/16"
Includes Rail.

13 Piece 6 Point Standard Metric Socket Set

Part No. D004002



Set Content:

13 Standard Metric Sockets: 4, 5, 5.5, 6, 7, 8, 9, 10, 11, 12, 13, 14, 15mm
Includes Rail.

12 Piece 6 Point Deep Metric Socket Set

Part No. D004003



Set Content:

12 Deep Metric Sockets: 4, 5, 5.5, 6, 7, 8, 9, 10, 11, 12, 13, 14mm
Includes Rail.

9 Piece 12 Point Standard Metric Socket Set

Part No. D004008



Set Content:

9 Standard Metric Sockets: 4, 5, 6, 7, 8, 9, 10, 11, 12mm
Includes Rail.



Hand Sockets

8 Piece Standard Length Torx® Socket Set

Part No. D004009



Set Content:
8 Torx® Sockets: T8, T9, T10, T15, T20, T25, T27, T30
Includes Rail.

28 Piece 6 Point Standard SAE/Metric Socket Set

Part No. D004004



Set Content:
10 Standard SAE Sockets: 3/16", 7/32", 1/4", 9/32", 5/16", 11/32", 3/8", 7/16", 1/2", 9/16"
13 Standard Metric Sockets: 4, 5, 5.5, 6, 7, 8, 9, 10, 11, 12, 13, 14, 15mm
2" Extension, 6" Extension, Hand Driver, Universal Joint, 45 Tooth Chrome Ratchet

Includes Metal Case.

25 Piece 6 Point Standard/Deep SAE Socket Set

Part No. D004005



Set Content:

10 Standard SAE Sockets: 3/16", 7/32", 1/4", 9/32", 5/16", 11/32", 3/8", 7/16", 1/2", 9/16"
 10 Deep SAE Sockets: 3/16", 7/32", 1/4", 9/32", 5/16", 11/32", 3/8", 7/16", 1/2", 9/16"
 2" Extension, 6" Extension, Hand Driver, Universal Joint, 45 Tooth Chrome Ratchet

Includes Metal Case.

47 Piece 6 Point Standard/Deep SAE/Metric Socket Set

Part No. D004006



Set Content:

10 Standard SAE Sockets: 3/16", 7/32", 1/4", 9/32", 5/16", 11/32", 3/8", 7/16", 1/2", 9/16"
 10 Deep SAE Sockets: 3/16", 7/32", 1/4", 9/32", 5/16", 11/32", 3/8", 7/16", 1/2", 9/16"
 12 Standard Metric Sockets: 4, 5, 5.5, 6, 7, 8, 9, 10, 11, 12, 13, 14mm
 10 Deep Metric Sockets: 4, 5, 5.5, 6, 7, 8, 9, 10, 11, 12mm
 2" Extension, 6" Extension, Hand Driver, Universal Joint, 45 Tooth Chrome Ratchet

Includes Blow Mold Case.



Hand Socket Attachments



Quick Release Ratchet-Chrome Handle

Part No.	Length (inches)	Weight (lbs)	No. of Teeth
D001301	5.00	0.32	45



Quick Release Ratchet-Comfort Handle

Part No.	Length (inches)	Weight (lbs)	No. of Teeth
D001302	5.00	0.32	72



Swivel Head Ratchet-Comfort Handle

Part No.	Length (inches)	Weight (lbs)	No. of Teeth
D001306	6.00	0.30	72

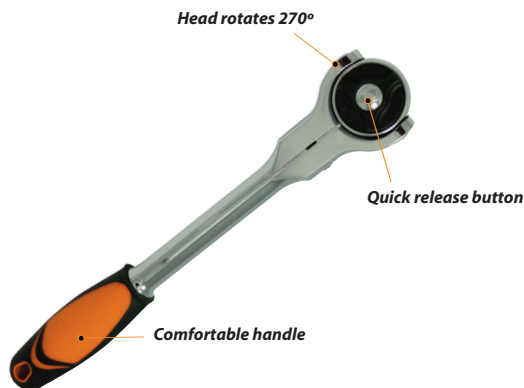


Stubby Ratchet

Part No.	Length (inches)	Weight (lbs)	No. of Teeth
D001307	3.50	0.17	48

Dynamic Swivel Head Ratchets

Accessibility and Convenience that Make Your Job Easier



Hand Socket Attachments

Flex Handle

Part No.	Length (inches)	Weight (lbs)
D001800	6.00	0.25



Chrome Extensions

Part No.	Length (inches)	Weight (lbs)
D001002	2.00	0.05
D001004	4.00	0.10
D001006	6.00	0.15



Sliding T-Handle

Part No.	Length (inches)	Weight (lbs)
D001500	4.49	0.09



Universal Joint

Part No.	Length (inches)	Weight (lbs)
D001601	1.46	0.05



Bit Holder

Part No.	Length (inches)	Hex (inches)	Male (inches)	Weight (lbs)
D001201	1.00	1/4	1/4	0.03



Hand Driver

Part No.	Length (inches)	Weight (lbs)
D001101	6.00	0.23





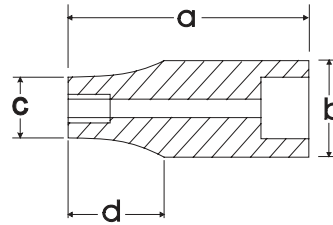
Hand Sockets



SAE Standard Chrome Sockets

Size	Drive		Overall Length (a) inches	Drive End (b) inches	Hex End (c) inches	Taper Length (d) inches	Net Weight (lbs)
	6 POINT	12 POINT					
5/32"	D003303		0.98	0.46	0.27	0.45	0.02
3/16"	D003304	D003404	0.98	0.46	0.31	0.45	0.02
7/32"	D003306	D003406	0.98	0.46	0.33	0.45	0.02
1/4"	D003308	D003408	0.98	0.46	0.37	0.45	0.03
9/32"	D003309	D003409	0.98	0.46	0.42	0.45	0.03
5/16"	D003310	D003410	0.98	0.46	0.46	0.00	0.03
11/32"	D003311	D003411	0.98	0.50	0.50	0.00	0.03
3/8"	D003312	D003412	0.98	0.54	0.54	0.00	0.03
7/16"	D003314	D003414	0.98	0.62	0.62	0.00	0.05
1/2"	D003316	D003416	0.98	0.70	0.70	0.00	0.07
9/16"	D003318	D003418	0.98	0.78	0.78	0.00	0.08

* Meets A.N.S.I. standards



SAE Deep Chrome Sockets

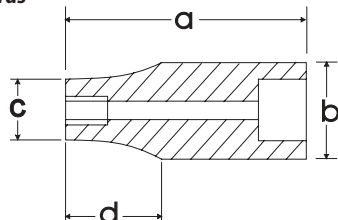
Size	Drive		Overall Length (a) inches	Drive End Width (b) inches	Hex End Length (c) inches	Taper Length (d) inches	Net Weight (lbs)
	6 POINT						
3/16"	D003504		1.97	0.46	0.31	1.10	0.04
7/32"	D003506		1.97	0.46	0.33	1.10	0.04
1/4"	D003508		1.97	0.46	0.37	1.10	0.04
9/32"	D003509		1.97	0.46	0.42	1.10	0.05
5/16"	D003510		1.97	0.46	0.46	0.00	0.06
11/32"	D003511		1.97	0.51	0.51	0.00	0.06
3/8"	D003512		1.97	0.57	0.57	0.00	0.07
7/16"	D003514		1.97	0.62	0.62	0.00	0.09
1/2"	D003516		1.97	0.70	0.70	0.00	0.09
9/16"	D003518		1.97	0.78	0.78	0.00	0.11

* Meets A.N.S.I. standards

Metric Standard Chrome Sockets

Size	Drive		Overall Length (a) inches	Drive End (b) inches	Hex End (c) inches	Taper Length (d) inches	Net Weight (lbs)
	6 POINT	12 POINT					
4 mm	D003004	D003104	0.98	0.46	0.27	0.45	0.02
4.5 mm	D003045		0.98	0.46	0.29	0.45	0.02
5 mm	D003005	D003105	0.98	0.46	0.31	0.45	0.02
5.5 mm	D003055		0.98	0.46	0.34	0.45	0.02
6 mm	D003006	D003106	0.98	0.46	0.37	0.45	0.02
7 mm	D003007	D003107	0.98	0.46	0.43	0.45	0.03
8 mm	D003008	D003108	0.98	0.46	0.46	0.00	0.03
9 mm	D003009	D003109	0.98	0.50	0.50	0.00	0.03
10 mm	D003010	D003110	0.98	0.54	0.54	0.00	0.03
11 mm	D003011	D003111	0.98	0.62	0.62	0.00	0.04
12 mm	D003012	D003112	0.98	0.66	0.66	0.00	0.05
13 mm	D003013		0.98	0.70	0.70	0.00	0.05
14 mm	D003014		0.98	0.78	0.78	0.00	0.08
15 mm	D003015		0.98	0.82	0.82	0.00	0.10

* Meets A.N.S.I. standards



Metric Deep Chrome Sockets

Size	Drive		Overall Length (a) inches	Drive End Width (b) inches	Hex End Length (c) inches	Taper Length (d) inches	Net Weight (lbs)
	6 POINT	12 POINT					
4 mm	D003204		1.97	0.46	0.27	1.10	0.03
5 mm	D003205		1.97	0.46	0.31	1.10	0.04
5.5 mm	D003255		1.97	0.46	0.34	1.10	0.04
6 mm	D003206		1.97	0.46	0.37	1.10	0.04
7 mm	D003207		1.97	0.46	0.43	1.10	0.05
8 mm	D003208		1.97	0.46	0.46	0.00	0.06
9 mm	D003209		1.97	0.51	0.51	0.00	0.06
10 mm	D003210		1.97	0.57	0.57	0.00	0.07
11 mm	D003211		1.97	0.62	0.62	0.00	0.09
12 mm	D003212		1.97	0.66	0.66	0.00	0.09
13 mm	D003213		1.97	0.70	0.70	0.00	0.11
14 mm	D003214		1.97	0.78	0.78	0.00	0.12

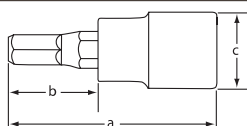
* Meets A.N.S.I. standards



Torx® Head Sockets-Standard Length

Size	Part No.	Drive		Drive End Width (c) inches	Net Weight (lbs)
		Overall Length (a) inches	Bit Length (b) inches		
T8	D002308	1.46	0.71	0.46	0.03
T9	D002309	1.46	0.71	0.46	0.03
T10	D002310	1.46	0.71	0.46	0.03
T15	D002315	1.46	0.71	0.46	0.03
T20	D002320	1.46	0.71	0.46	0.03
T25	D002325	1.46	0.71	0.46	0.03
T27	D002327	1.46	0.71	0.46	0.03
T30	D002330	1.46	0.71	0.46	0.03

* Meets A.N.S.I. standards





Hand Sockets

13 Piece 6 Point Standard SAE Socket Set

Part No. D010000



Set Content:

13 Standard SAE Sockets: 1/4", 5/16", 3/8", 7/16", 1/2", 9/16", 5/8", 11/16", 3/4", 13/16", 7/8", 15/16", 1"
Includes Rail.

13 Piece 6 Point Deep SAE Socket Set

Part No. D010001



Set Content:

13 Standard SAE Sockets: 1/4", 5/16", 3/8", 7/16", 1/2", 9/16", 5/8", 11/16", 3/4", 13/16", 7/8", 15/16", 1"
Includes Rail.

13 Piece 12 Point Standard SAE Socket Set

Part No. D010002



Set Content:

13 Standard SAE Sockets: 1/4", 5/16", 3/8", 7/16", 1/2", 9/16", 5/8", 11/16", 3/4", 13/16", 7/8", 15/16", 1"
Includes Rail.

13 Piece 12 Point Deep SAE Socket Set

Part No. D010003



Set Content:

13 Standard SAE Sockets: 1/4", 5/16", 3/8", 7/16", 1/2", 9/16", 5/8", 11/16", 3/4", 13/16", 7/8", 15/16", 1"
Includes Rail.



Hand Sockets

14 Piece 6 Point Standard Metric Socket Set

Part No. D010004



Set Content:

14 Standard Metric Sockets: 6, 7, 8, 9, 10, 11, 12, 13, 14, 15, 16, 17, 18, 19mm
Includes Rail.

14 Piece 6 Point Deep Metric Socket Set

Part No. D010005



Set Content:

14 Deep Metric Sockets: 6, 7, 8, 9, 10, 11, 12, 13, 14, 15, 16, 17, 18, 19mm
Includes Rail.

14 Piece 12 Point Standard Metric Socket Set

Part No. D010006



Set Content:

14 Standard Metric Sockets: 6, 7, 8, 9, 10, 11, 12, 13, 14, 15, 16, 17, 18, 19mm
Includes Rail.

14 Piece 12 Point Deep Metric Socket Set

Part No. D010007



Set Content:

14 Deep Metric Sockets: 6, 7, 8, 9, 10, 11, 12, 13, 14, 15, 16, 17, 18, 19mm
Includes Rail.



Hand Sockets

7 Piece Standard Length SAE Hex Socket Set

Part No. D010014



Set Content:

7 SAE Hex Sockets: 1/8", 5/32", 3/16", 7/32", 1/4", 5/16", 3/8"
Includes Rail.

7 Piece Long SAE Hex Socket Set

Part No. D010015



Set Content:

7 Long SAE Hex Sockets: 1/8", 5/32", 3/16", 7/32", 1/4", 5/16", 3/8"
Includes Rail.

7 Piece Long SAE Ball Nose Hex Socket Set

Part No. D010024



Set Content:

7 SAE Long Ball Nose Hex Sockets: 1/8", 5/32", 3/16", 7/32", 1/4", 5/16", 3/8"
Includes Rail.

7 Piece Standard Length Metric Hex Socket Set

Part No. D010016



Set Content:

7 Metric Hex Sockets: 4, 5, 6, 7, 8, 9, 10mm
Includes Rail.



Hand Sockets

7 Piece Long Metric Hex Socket Set

Part No. D010017



Set Content:
7 Long Metric Hex Sockets: 4, 5, 6, 7, 8, 9, 10mm
Includes Rail.

7 Piece Long Metric Ball Nose Hex Socket Set

Part No. D010025



Set Content:
7 Metric Long Ball Nose Hex Sockets: 4, 5, 6, 7, 8, 9, 10mm
Includes Rail.

9 Piece Standard Length Torx® Socket Set

Part No. D010018



Set Content:

9 Torx® Sockets: T15, T20, T25, T27, T30, T40, T45, T50, T55

Includes Rail.

9 Piece Long Torx® Socket Set

Part No. D010019



Set Content:

9 Long Torx® Sockets: T15, T20, T25, T27, T30, T40, T45, T50, T55

Includes Rail.



Hand Sockets

7 Piece SAE Flex Head Crow Foot Socket Set

Part No. D010029



Set Content:

7 SAE Flex Head Crow Foot Sockets: 3/8", 7/16", 1/2", 9/16", 5/8", 11/16", 3/4"
Includes Rail.

10 Piece Metric Flex Head Crow Foot Socket Set

Part No. D010028



Set Content:

10 Metric Flex Head Crow Foot Sockets: 10, 11, 12, 13, 14, 15, 16, 17, 18, 19 mm
Includes Rail.

7 Piece 6 Point SAE U-Joint Socket Set

Part No. D010026



Set Content:

7 U-Joint Sockets: 3/8", 7/16", 1/2", 9/16", 5/8", 11/16", 3/4"
Includes Rail.

10 Piece 6 Point Metric U-Joint Socket Set

Part No. D010027



Set Content:

10 Metric U-Joint Sockets: 10, 11, 12, 13, 14, 15, 16, 17, 18, 19 mm
Includes Rail.



Hand Sockets

16 Piece 6 Point Standard SAE Socket Set

Part No. D010008



Set Content:

11 Standard SAE Sockets: 3/8", 7/16", 1/2", 9/16", 5/8", 11/16", 3/4", 13/16", 7/8", 15/16", 1"
3" Extension, 6" Extension, Universal Joint, 8" Flex Handle, 45 Tooth Chrome Ratchet

Includes Metal Case.

27 Piece 6 Point Standard/Deep SAE Socket Set

Part No. D010009



Set Content:

11 Standard SAE Sockets: 3/8", 7/16", 1/2", 9/16", 5/8", 11/16", 3/4", 13/16", 7/8", 15/16", 1"
11 Deep SAE Sockets: 3/8", 7/16", 1/2", 9/16", 5/8", 11/16", 3/4", 13/16", 7/8", 15/16", 1"
3" Extension, 6" Extension, Universal Joint, 8" Flex Handle, 45 Tooth Chrome Ratchet

Includes Metal Case.

Hand Sockets

20 Piece 6 Point Standard Metric Socket Set

Part No. D010010



Set Content:

15 Standard Metric Sockets: 6, 7, 8, 9, 10, 11, 12, 13, 14, 15, 16, 17, 18, 19, 20mm
3" Extension, 6" Extension, Universal Joint, 8" Flex Handle, 45 Tooth Chrome Ratchet



Includes Metal Case.

35 Piece 6 Point Standard/Deep Metric Socket Set

Part No. D010011



Set Content:

15 Standard Metric Sockets: 6, 7, 8, 9, 10, 11, 12, 13, 14, 15, 16, 17, 18, 19, 20mm
15 Deep Metric Sockets: 6, 7, 8, 9, 10, 11, 12, 13, 14, 15, 16, 17, 18, 19, 20mm
3" Extension, 6" Extension, Universal Joint, 8" Flex Handle, 45 Tooth Chrome Ratchet



Includes Metal Case.



Hand Sockets

60 Piece 6 Point Standard/Deep SAE/Metric Socket Set

Part No. D010012



Set Content:

- 13 Standard SAE Sockets: 1/4", 5/16", 3/8", 7/16", 1/2", 9/16", 5/8", 11/16", 3/4", 13/16", 7/8", 15/16", 1"
- 13 Deep SAE Sockets: 1/4", 5/16", 3/8", 7/16", 1/2", 9/16", 5/8", 11/16", 3/4", 13/16", 7/8", 15/16", 1"
- 14 Standard Metric Sockets: 6, 7, 8, 9, 10, 11, 12, 13, 14, 15, 16, 17, 18, 19mm
- 15 Deep Metric Sockets: 6, 7, 8, 9, 10, 11, 12, 13, 14, 15, 16, 17, 18, 19, 20mm
- 3" Extension, 6" Extension, Universal Joint, 8" Flex Handle, 45 Tooth Chrome Ratchet

Includes Blow Mold Case.

57 Piece 12 Point Standard/Deep SAE/Metric Socket Set

Part No. D010013



Set Content:

- 12 Standard SAE Sockets: 1/4", 5/16", 3/8", 7/16", 1/2", 9/16", 5/8", 11/16", 3/4", 7/8", 15/16", 1"
- 12 Deep SAE Sockets: 1/4", 5/16", 3/8", 7/16", 1/2", 9/16", 5/8", 11/16", 3/4", 7/8", 15/16", 1"
- 14 Standard Metric Sockets: 6, 7, 8, 9, 10, 11, 12, 13, 14, 15, 16, 17, 18, 19mm
- 14 Deep Metric Sockets: 6, 7, 8, 9, 10, 11, 12, 13, 14, 15, 16, 17, 18, 19mm
- 3" Extension, 6" Extension, Universal Joint, 8" Flex Handle, 45 Tooth Chrome Ratchet

Includes Blow Mold Case.

Hand Socket Attachments

Quick Release Ratchet-Chrome Handle

Part No.	Length (inches)	Weight (lbs)	No. of Teeth
D005301	7.60	1.46	45



Quick Release Ratchet-Comfort Handle

Part No.	Length (inches)	Weight (lbs)	No. of Teeth
D005302	7.60	0.55	72



Quick Release Ratchet-Comfort Handle

Part No.	Length (inches)	Weight (lbs)	No. of Teeth
D005306	9.00	0.85	72



Stubby Ratchet

Part No.	Length (inches)	Weight (lbs)	No. of Teeth
D005307	4.75	0.44	48



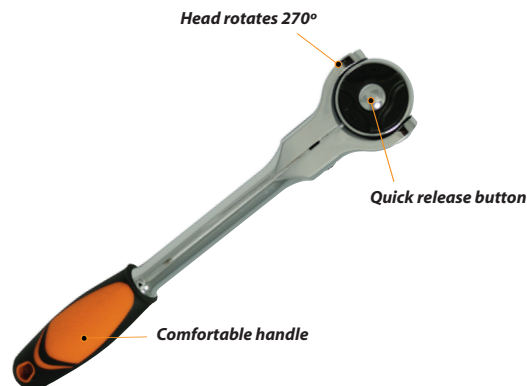
Flex Head Ratchet

Part No.	Length (inches)	Weight (lbs)	No. of Teeth
D005308	11.75	0.85	48



Dynamic Swivel Head Ratchets

Accessibility and Convenience that Make Your Job Easier





Hand Socket Attachments



Flex Handle

Part No.	Length (inches)	Weight (lbs)
D005800	7.87	0.47



Chrome Extensions

Part No.	Length (inches)	Weight (lbs)
D005003	3.00	0.17
D005006	6.00	0.30
D005010	10.00	0.54



Chrome Extensions with Quick Release

Part No.	Length (inches)	Weight (lbs)
D005023	3.00	0.18
D005026	6.00	0.33
D005030	10.00	0.52



Sliding T-Handle

Part No.	Length (inches)	Weight (lbs)
D005500	6.46	0.09



Universal Joint

Part No.	Length (inches)	Weight (lbs)
D005601	1.81	0.13



Adapters

Part No.	Length (inches)	Female (inches)	Male (inches)	Weight (lbs)
D005701	1.38	3/8	1/4	0.07
D005702	1.81	3/8	1/2	0.10



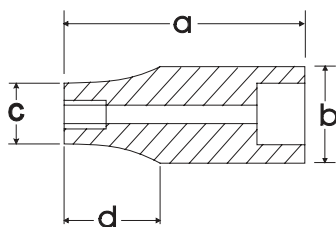
Spark Plug Sockets

Part No.	Size (inches)	Length (inches)	Weight (lbs)
D005401	5/8	2.48	0.21
D005402	13/16	2.48	0.28

SAE Standard Chrome Sockets

Size			Overall Length (a) inches	Drive End (b) inches	Hex End (c) inches	Taper Length (d) inches	Net Weight (lbs)
	Part No.	Part No.					
1/4"	D008308	D009408	1.10	0.66	0.39	0.47	0.05
5/16"	D008310	D009410	1.10	0.66	0.47	0.47	0.05
3/8"	D008312	D009412	1.10	0.66	0.54	0.47	0.06
7/16"	D008314	D009414	1.10	0.66	0.63	0.47	0.06
1/2"	D008316	D009416	1.10	0.70	0.70	0.00	0.07
9/16"	D008318	D009418	1.10	0.78	0.78	0.00	0.08
5/8"	D008320	D009420	1.10	0.86	0.86	0.00	0.10
11/16"	D008322	D009422	1.18	0.94	0.94	0.00	0.10
3/4"	D008324	D009424	1.18	1.02	1.02	0.00	0.12
13/16"	D008326	D009426	1.18	1.09	1.09	0.00	0.16
7/8"	D008328	D009428	1.18	1.17	1.17	0.00	0.16
15/16"	D008330	D009430	1.18	1.25	1.25	0.00	0.19
1"	D008332	D009432	1.18	1.33	1.33	0.00	0.21

* Meets A.N.S.I. standards



SAE Deep Chrome Sockets

Size			Overall Length (a) inches	Drive End (b) inches	Hex End (c) inches	Taper Length (d) inches	Net Weight (lbs)
	Part No.	Part No.					
1/4"	D008508	D009608	2.48	0.66	0.39	1.50	0.09
5/16"	D008510	D009610	2.48	0.66	0.47	1.50	0.10
3/8"	D008512	D009612	2.48	0.66	0.54	1.50	0.11
7/16"	D008514	D009614	2.48	0.66	0.63	1.50	0.11
1/2"	D008516	D009616	2.48	0.74	0.74	0.00	0.11
9/16"	D008518	D009618	2.48	0.78	0.78	0.00	0.16
5/8"	D008520	D009620	2.48	0.86	0.86	0.00	0.19
11/16"	D008522	D009622	2.48	0.94	0.94	0.00	0.23
3/4"	D008524	D009624	2.48	1.02	1.02	0.00	0.27
13/16"	D008526	D009626	2.48	1.09	1.09	0.00	0.43
7/8"	D008528	D009628	2.48	1.17	1.17	0.00	0.49
15/16"	D008530	D009630	2.48	1.25	1.25	0.00	0.54
1"	D008532	D009632	2.48	1.33	1.33	0.00	0.57

* Meets A.N.S.I. standards

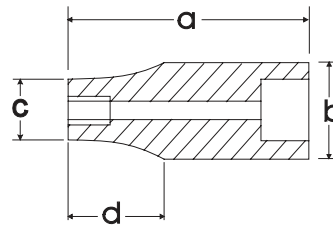




Metric Standard Chrome Sockets

Size	6 TORX Part No.	12 TORX Part No.	Overall Length (a) inches	Drive End (b) inches	Hex End (c) inches	Taper Length (d) inches	Net Weight (lbs)
6 mm	D008006	D009106	1.10	0.66	0.39	0.47	0.05
7 mm	D008007	D009107	1.10	0.66	0.43	0.47	0.05
8 mm	D008008	D009108	1.10	0.66	0.47	0.47	0.05
9 mm	D008009	D009109	1.10	0.66	0.52	0.47	0.05
10 mm	D008010	D009110	1.10	0.66	0.58	0.47	0.05
11 mm	D008011	D009111	1.10	0.66	0.62	0.47	0.06
12 mm	D008012	D009112	1.10	0.66	0.66	0.00	0.06
13 mm	D008013	D009113	1.10	0.70	0.70	0.00	0.06
14 mm	D008014	D009114	1.10	0.78	0.78	0.00	0.08
15 mm	D008015	D009115	1.10	0.86	0.86	0.00	0.10
16 mm	D008016	D009116	1.10	0.86	0.86	0.00	0.10
17 mm	D008017	D009117	1.18	0.94	0.94	0.00	0.10
18 mm	D008018	D009118	1.18	1.02	1.02	0.00	0.10
19 mm	D008019	D009119	1.18	1.02	1.02	0.00	0.12
20 mm	D008020	D009120	1.18	1.09	1.09	0.00	0.15
21 mm	D008021	D009121	1.18	1.09	1.09	0.00	0.15
22 mm	D008022	D009122	1.18	1.17	1.17	0.00	0.16
23 mm	D008023	D009123	1.18	1.25	1.25	0.00	0.16
24 mm	D008024		1.18	1.25	1.25	0.00	0.17

* Meets A.N.S.I. standards



Metric Deep Chrome Sockets

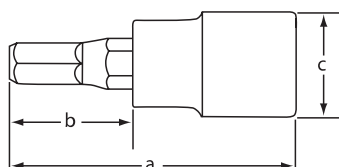
Size	6 TORX Part No.	12 TORX Part No.	Overall Length (a) inches	Drive End (b) inches	Hex End (c) inches	Taper Length (d) inches	Net Weight (lbs)
6 mm	D008206	D009706	2.48	0.66	0.39	1.50	0.09
7 mm	D008207	D009707	2.48	0.66	0.43	1.50	0.09
8 mm	D008208	D009708	2.48	0.66	0.47	1.50	0.09
9 mm	D008209	D009709	2.48	0.66	0.52	1.50	0.10
10 mm	D008210	D009710	2.48	0.66	0.58	1.50	0.10
11 mm	D008211	D009711	2.48	0.66	0.62	1.50	0.11
12 mm	D008212	D009712	2.48	0.70	0.70	0.00	0.11
13 mm	D008213	D009713	2.48	0.74	0.74	0.00	0.13
14 mm	D008214	D009714	2.48	0.78	0.78	0.00	0.16
15 mm	D008215	D009715	2.48	0.86	0.86	0.00	0.18
16 mm	D008216	D009716	2.48	0.86	0.86	0.00	0.20
17 mm	D008217	D009717	2.48	0.94	0.94	0.00	0.23
18 mm	D008218	D009718	2.48	1.02	1.02	0.00	0.25
19 mm	D008219	D009719	2.48	1.02	1.02	0.00	0.27
20 mm	D008220		2.48	1.09	1.09	0.00	0.33
21 mm	D008221		2.48	1.09	1.09	0.00	0.34
22 mm	D008222		2.48	1.17	1.17	0.00	0.37
23 mm	D008223		2.48	1.25	1.25	0.00	0.38

* Meets A.N.S.I. standards

Hex Head Sockets SAE-Standard Length

Size	Part No.	Overall Length (a) inches	Bit Length (b) inches	Drive End Width (c) inches	Net Weight (lbs)
1/8"	D006052	1.89	0.87	0.70	0.09
5/32"	D006053	1.89	0.87	0.70	0.09
3/16"	D006054	1.89	0.87	0.70	0.09
7/32"	D006056	1.89	0.87	0.70	0.10
1/4"	D006058	1.89	0.87	0.70	0.10
5/16"	D006060	1.89	0.87	0.70	0.10
3/8"	D006062	1.89	0.87	0.70	0.13

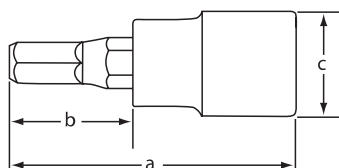
* Meets A.N.S.I. standards



Hex Head Sockets SAE-Long

Size	Part No.	Overall Length (a) inches	Bit Length (b) inches	Drive End Width (c) inches	Net Weight (lbs)
1/8"	D006452	3.62	2.60	0.70	0.17
5/32"	D006453	3.62	2.60	0.70	0.17
3/16"	D006454	3.62	2.60	0.70	0.17
7/32"	D006456	3.62	2.60	0.70	0.17
1/4"	D006458	3.62	2.60	0.70	0.17
5/16"	D006460	3.62	2.60	0.70	0.17
3/8"	D006462	3.62	2.60	0.70	0.26

* Meets A.N.S.I. standards



Hex Head Ball Nose Sockets SAE-Long

Size	Part No.	Overall Length (a) inches	Bit Length (b) inches	Drive End Width (c) inches	Net Weight (lbs)
1/8"	D006952	3.62	2.60	0.70	0.17
5/32"	D006953	3.62	2.60	0.70	0.17
3/16"	D006954	3.62	2.60	0.70	0.17
7/32"	D006956	3.62	2.60	0.70	0.17
1/4"	D006958	3.62	2.60	0.70	0.17
5/16"	D006960	3.62	2.60	0.70	0.17
3/8"	D006962	3.62	2.60	0.70	0.26

* Meets A.N.S.I. standards

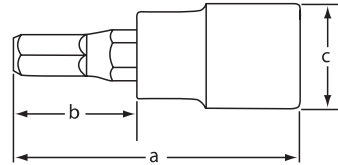




Hex Head Sockets Metric-Standard Length

Size	Part No.	Overall Length (a) inches	Bit Length (b) inches	Drive End Width (c) inches	Net Weight (lbs)
4 mm	D006004	1.89	0.87	0.70	0.09
5 mm	D006005	1.89	0.87	0.70	0.09
6 mm	D006006	1.89	0.87	0.70	0.10
7 mm	D006007	1.89	0.87	0.70	0.10
8 mm	D006008	1.89	0.87	0.70	0.10
9 mm	D006009	1.89	0.87	0.70	0.11
10 mm	D006010	1.89	0.87	0.70	0.13

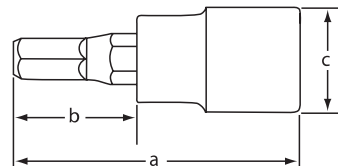
* Meets A.N.S.I. standards



Hex Head Sockets Metric-Long

Size	Part No.	Overall Length (a) inches	Bit Length (b) inches	Drive End Width (c) inches	Net Weight (lbs)
4 mm	D006404	3.62	2.60	0.70	0.17
5 mm	D006405	3.62	2.60	0.70	0.17
6 mm	D006406	3.62	2.60	0.70	0.17
7 mm	D006407	3.62	2.60	0.70	0.17
8 mm	D006408	3.62	2.60	0.70	0.17
9 mm	D006409	3.62	2.60	0.70	0.17
10 mm	D006410	3.62	2.60	0.70	0.26

* Meets A.N.S.I. standards



Hex Head Ball Nose Sockets Metric-Long

Size	Part No.	Overall Length (a) inches	Bit Length (b) inches	Drive End Width (c) inches	Net Weight (lbs)
4 mm	D006904	3.62	2.60	0.70	0.17
5 mm	D006905	3.62	2.60	0.70	0.17
6 mm	D006906	3.62	2.60	0.70	0.17
7 mm	D006907	3.62	2.60	0.70	0.17
8 mm	D006908	3.62	2.60	0.70	0.17
9 mm	D006909	3.62	2.60	0.70	0.17
10 mm	D006910	3.62	2.60	0.70	0.26

* Meets A.N.S.I. standards

Slotted Head Sockets-Standard Length

Size	Part No.	Overall Length (a) inches	Bit Length (b) inches	Drive End Width (c) inches	Net Weight (lbs)
SL5	D006105	1.89	0.87	0.70	0.11
SL6	D006106	1.89	0.87	0.70	0.11
SL7	D006107	1.89	0.87	0.70	0.11
SL8	D006108	1.89	0.87	0.70	0.11

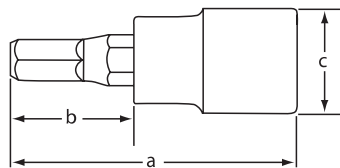
* Meets A.N.S.I. standards



Phillips® Head Sockets-Standard Length

Size	Part No.	Overall Length (a) inches	Bit Length (b) inches	Drive End Width (c) inches	Net Weight (lbs)
PH1	D006201	1.89	0.87	0.70	0.09
PH2	D006202	1.89	0.87	0.70	0.09
PH3	D006203	1.89	0.87	0.70	0.09
PH4	D006204	1.89	0.87	0.70	0.09

* Meets A.N.S.I. standards



Torx® Head Sockets-Regular Length

Size	Part No.	Overall Length (a) inches	Bit Length (b) inches	Drive End Width (c) inches	Net Weight (lbs)
T15	D006315	1.89	0.87	0.70	0.11
T20	D006320	1.89	0.87	0.70	0.11
T25	D006325	1.89	0.87	0.70	0.11
T27	D006327	1.89	0.87	0.70	0.11
T30	D006330	1.89	0.87	0.70	0.11
T40	D006340	1.89	0.87	0.70	0.11
T45	D006345	1.89	0.87	0.70	0.11
T50	D006350	1.89	0.87	0.70	0.11
T55	D006355	1.89	0.87	0.70	0.11

* Meets A.N.S.I. standards



Torx® Head Sockets-Long

Size	Part No.	Overall Length (a) inches	Bit Length (b) inches	Drive End Width (c) inches	Net Weight (lbs)
T15	D006715	3.62	2.60	0.70	0.17
T20	D006720	3.62	2.60	0.70	0.17
T25	D006725	3.62	2.60	0.70	0.17
T27	D006727	3.62	2.60	0.70	0.17
T30	D006730	3.62	2.60	0.70	0.17
T40	D006740	3.62	2.60	0.70	0.17
T45	D006745	3.62	2.60	0.70	0.20
T50	D006750	3.62	2.60	0.70	0.20
T55	D006755	3.62	2.60	0.70	0.20

* Meets A.N.S.I. standards





Hand Sockets

SAE Flex Head Crow Foot Sockets



Size	Part No.	Overall Length (inches)	Drive End Width (inches)	Net Weight (lbs)
3/8"	D008642	1.93	0.75	0.10
7/16"	D008644	2.09	0.75	0.12
1/2"	D008646	2.09	0.75	0.12
9/16"	D008648	2.36	0.75	0.17
5/8"	D008650	2.89	0.98	0.33
11/16"	D008652	2.89	0.98	0.32
3/4"	D008654	2.89	0.98	0.32

* Meets A.N.S.I. standards

Metric Flex Head Crow Foot Sockets



Size	Part No.	Overall Length (inches)	Drive End Width (inches)	Net Weight (lbs)
10 mm	D008760	1.93	0.75	0.10
11 mm	D008761	2.09	0.75	0.12
12 mm	D008762	2.09	0.75	0.12
13 mm	D008763	2.36	0.75	0.17
14 mm	D008764	2.36	0.75	0.17
15 mm	D008765	2.36	0.75	0.16
16 mm	D008766	2.89	0.98	0.33
17 mm	D008767	2.89	0.98	0.33
18 mm	D008768	2.89	0.98	0.32
19 mm	D008769	2.89	0.98	0.31

* Meets A.N.S.I. standards

SAE U-Joint Sockets



Size	Part No.	Overall Length (inches)	Drive End Width (inches)	Net Weight (lbs)
3/8"	D008612	1.73	0.75	0.12
7/16"	D008614	1.81	0.75	0.12
1/2"	D008616	1.93	0.75	0.13
9/16"	D008618	1.93	0.75	0.13
5/8"	D008620	1.93	0.75	0.14
11/16"	D008622	1.93	0.75	0.16
3/4"	D008624	2.01	0.75	0.16

* Meets A.N.S.I. standards

Metric U-Joint Sockets



Size	Part No.	Overall Length (inches)	Drive End Width (inches)	Net Weight (lbs)
10 mm	D008710	1.73	0.75	0.12
11 mm	D008711	1.81	0.75	0.12
12 mm	D008712	1.81	0.75	0.13
13 mm	D008713	1.93	0.75	0.13
14 mm	D008714	1.93	0.75	0.13
15 mm	D008715	1.93	0.75	0.14
16 mm	D008716	1.93	0.75	0.14
17 mm	D008717	1.93	0.75	0.16
18 mm	D008718	2.01	0.75	0.16
19 mm	D008719	2.01	0.75	0.16

* Meets A.N.S.I. standards

Attachment

Impact Socket Attachments



Impact Universal Joints

Part No.	Drive Size (inches)	Length (inches)	Weight (lbs)
D008660	3/8	1.97	0.20
D016660	1/2	2.59	0.35
D022660	3/4	3.62	1.15



Impact Extensions

Part No.	Drive Size (inches)	Length (inches)	Weight (lbs)
D005053	3/8	3	0.15
D005056	3/8	6	0.30
D012055	1/2	5	0.50
D012060	1/2	10	0.95
D019056	3/4	6	1.60
D019060	3/4	10	2.45



Impact Adapters

Part No.	Length (inches)	Female (inches)	Male (inches)	Weight (lbs)
D005710	1.45	3/8	1/2	0.15
D012710	1.50	1/2	3/8	0.15
D012711	1.89	1/2	3/4	0.35
D019710	2.21	3/4	1/2	0.65





Impact Sockets

8 Piece 6 Point Standard SAE Impact Socket Set

Part No. D010020



Set Content:

8 Standard SAE Impact Sockets: 5/16", 3/8", 7/16", 1/2", 9/16", 5/8", 11/16", 3/4"
Includes Rail.

8 Piece 6 Point Deep SAE Impact Socket Set

Part No. D010021



Set Content:

8 Deep SAE Impact Sockets: 5/16", 3/8", 7/16", 1/2", 9/16", 5/8", 11/16", 3/4"
Includes Rail.

12 Piece 6 Point Standard Metric Impact Socket Set

Part No. D010022



Set Content:

12 Standard Metric Impact Sockets: 8, 9, 10, 11, 12, 13, 14, 15, 16, 17, 18, 19mm
Includes Rail.

12 Piece 6 Point Deep Metric Impact Socket Set

Part No. D010023



Set Content:

12 Deep Metric Impact Sockets: 8, 9, 10, 11, 12, 13, 14, 15, 16, 17, 18, 19mm
Includes Rail.



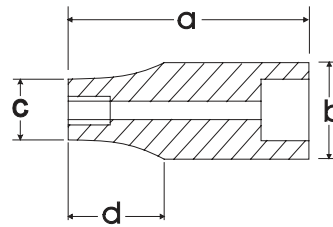
Impact Sockets



SAE Standard Impact Sockets

Size	Part No.	Overall Length (a) inches	Drive End Width (b) inches	Hex End Length (c) inches	Taper Length (d) inches	Net Weight (lbs)
5/16"	D007310	1.12	0.74	0.49	0.47	0.08
3/8"	D007312	1.12	0.74	0.54	0.47	0.08
7/16"	D007314	1.18	0.74	0.58	0.47	0.09
1/2"	D007316	1.18	0.74	0.67	0.47	0.09
9/16"	D007318	1.18	0.78	0.78	0.00	0.09
5/8"	D007320	1.18	0.94	0.94	0.00	0.15
11/16"	D007322	1.24	0.94	0.94	0.00	0.15
3/4"	D007324	1.24	1.02	1.02	0.00	0.17

* Meets A.N.S.I. standards



SAE Deep Impact Sockets

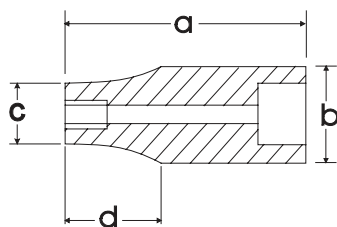
Size	Part No.	Overall Length (a) inches	Drive End Width (b) inches	Hex End Length (c) inches	Taper Length (d) inches	Net Weight (lbs)
5/16"	D007510	2.48	0.74	0.49	0.51	0.21
3/8"	D007512	2.48	0.74	0.54	0.51	0.21
7/16"	D007514	2.48	0.74	0.58	0.51	0.21
1/2"	D007516	2.48	0.74	0.67	0.51	0.21
9/16"	D007518	2.48	0.78	0.78	0.00	0.22
5/8"	D007520	2.48	0.94	0.94	0.00	0.29
11/16"	D007522	2.48	0.94	0.94	0.00	0.29
3/4"	D007524	2.48	1.02	1.02	0.00	0.32

* Meets A.N.S.I. standards

Metric Standard Impact Sockets

Size	Part No.	Overall Length (a) inches	Drive End Width (b) inches	Hex End Length (c) inches	Taper Length (d) inches	Net Weight (lbs)
8 mm	D007008	1.12	0.74	0.49	0.47	0.08
9 mm	D007009	1.12	0.74	0.55	0.47	0.08
10 mm	D007010	1.12	0.74	0.59	0.47	0.08
11 mm	D007011	1.12	0.74	0.67	0.47	0.09
12 mm	D007012	1.12	0.74	0.74	0.00	0.09
13 mm	D007013	1.12	0.74	0.74	0.00	0.09
14 mm	D007014	1.12	0.78	0.78	0.00	0.09
15 mm	D007015	1.12	0.86	0.86	0.00	0.11
16 mm	D007016	1.12	0.94	0.94	0.00	0.15
17 mm	D007017	1.12	0.94	0.94	0.00	0.15
18 mm	D007018	1.12	1.00	1.00	0.00	0.15
19 mm	D007019	1.12	1.02	1.02	0.00	0.17

* Meets A.N.S.I. standards



Metric Deep Impact Sockets

Size	Part No.	Overall Length (a) inches	Drive End Width (b) inches	Hex End Length (c) inches	Taper Length (d) inches	Net Weight (lbs)
8 mm	D007208	2.48	0.74	0.49	0.51	0.21
9 mm	D007209	2.48	0.74	0.55	0.51	0.21
10 mm	D007210	2.48	0.74	0.59	0.51	0.21
11 mm	D007211	2.48	0.74	0.67	0.51	0.21
12 mm	D007212	2.48	0.74	0.74	0.00	0.21
13 mm	D007213	2.48	0.74	0.74	0.00	0.21
14 mm	D007214	2.48	0.78	0.78	0.00	0.22
15 mm	D007215	2.48	0.86	0.86	0.00	0.24
16 mm	D007216	2.48	0.94	0.94	0.00	0.29
17 mm	D007217	2.48	0.94	0.94	0.00	0.29
18 mm	D007218	2.48	1.00	1.00	0.00	0.32
19 mm	D007219	2.48	1.02	1.02	0.00	0.32

* Meets A.N.S.I. standards





Hand Sockets

16 Piece 6 Point Standard SAE Socket Set

Part No. D018000



Set Content:

16 Standard SAE Sockets: 3/8", 7/16", 1/2", 9/16", 5/8", 11/16", 3/4", 13/16", 7/8", 15/16", 1", 1-1/16", 1-1/8", 1-3/16", 1-1/4", 1-5/16"

Includes Rail.

16 Piece 6 Point Deep SAE Socket Set

Part No. D018001



Set Content:

16 Deep SAE Sockets: 3/8", 7/16", 1/2", 9/16", 5/8", 11/16", 3/4", 13/16", 7/8", 15/16", 1", 1-1/16", 1-1/8", 1-3/16", 1-1/4", 1-5/16"

Includes Rail.

16 Piece 12 Point Standard SAE Socket Set

Part No. D018002



Set Content:

16 Standard SAE Sockets: 3/8", 7/16", 1/2", 9/16", 5/8", 11/16", 3/4", 13/16", 7/8", 15/16", 1", 1-1/16", 1-1/8", 1-3/16", 1-1/4", 1-5/16"

Includes Rail.

16 Piece 12 Point Deep SAE Socket Set

Part No. D018003



Set Content:

16 Deep SAE Sockets: 3/8", 7/16", 1/2", 9/16", 5/8", 11/16", 3/4", 13/16", 7/8", 15/16", 1", 1-1/16", 1-1/8", 1-3/16", 1-1/4", 1-5/16"

Includes Rail.



Hand Sockets

19 Piece 6 Point Standard Metric Socket Set

Part No. D018004



Set Content:

19 Standard Metric Sockets: 10, 11, 12, 13, 14, 15, 16, 17, 18, 19, 20, 21, 22, 23, 24, 25, 26, 27, 28mm
Includes Rail.

19 Piece 6 Point Deep Metric Socket Set

Part No. D018005



Set Content:

19 Deep Metric Sockets: 10, 11, 12, 13, 14, 15, 16, 17, 18, 19, 20, 21, 22, 23, 24, 25, 26, 27, 28mm
Includes Rail.

19 Piece 12 Point Standard Metric Socket Set

Part No. D018006



Set Content:

19 Standard Metric Sockets: 10, 11, 12, 13, 14, 15, 16, 17, 18, 19, 20, 21, 22, 23, 24, 25, 26, 27, 28mm
Includes Rail.

18 Piece 12 Point Deep Metric Socket Set

Part No. D018007



Set Content:

18 Deep Metric Sockets: 10, 11, 12, 13, 14, 15, 16, 17, 18, 19, 20, 21, 22, 23, 24, 25, 26, 27mm
Includes Rail.



Hand Sockets

8 Piece Standard Length SAE Hex Socket Set

Part No. D018018



Set Content:

8 SAE Hex Sockets: 1/4", 5/16", 3/8", 7/16", 1/2", 9/16", 5/8", 3/4"

Includes Rail.

8 Piece Long SAE Hex Socket Set

Part No. D018019



Set Content:

8 SAE Long Hex Sockets: 1/4", 5/16", 3/8", 7/16", 1/2", 9/16", 5/8", 3/4"

Includes Rail.

7 Piece Standard Length Metric Hex Socket Set

Part No. D018014



Set Content:
7 Metric Hex Sockets: 6, 8, 10, 12, 14, 17, 19mm
Includes Rail.

7 Piece Long Metric Hex Socket Set

Part No. D018015



Set Content:
7 Long Metric Hex Sockets: 6, 8, 10, 12, 14, 17, 19mm
Includes Rail.



Hand Sockets

7 Piece Standard Length Torx® Socket Set

Part No. D018016



Set Content:

7 Torx® Sockets: T20, T25, T27, T30, T40, T45, T50

Includes Rail.

7 Piece Long Torx® Socket Set

Part No. D018017



Set Content:

7 Long Torx® Sockets: T20, T25, T27, T30, T40, T45, T50

Includes Rail.

22 Piece 6 Point Standard SAE Socket Set

Part No. D018008



Set Content:

16 Standard SAE Sockets: 3/8", 7/16", 1/2", 9/16", 5/8", 11/16", 3/4", 13/16", 7/8", 15/16", 1", 1-1/16", 1-1/8", 1-3/16", 1-1/4", 1-5/16"
5" Extension, 10" Extension, 45 Tooth Ratchet, Universal Joint, Flex Handle, T-Handle

Includes Metal Case.

25 Piece 6 Point Standard Metric Socket Set

Part No. D018009



Set Content:

19 Standard Metric Sockets: 10, 11, 12, 13, 14, 15, 16, 17, 18, 19, 20, 21, 22, 23, 24, 25, 26, 27, 28mm
5" Extension, 10" Extension, 45 Tooth Ratchet, Universal Joint, Flex Handle, T-Handle

Includes Metal Case.



Hand Sockets

38 Piece 6 Point Standard/Deep SAE Socket Set

Part No. D018012



Set Content:

16 Standard SAE Sockets: 3/8", 7/16", 1/2", 9/16", 5/8", 11/16", 3/4", 13/16", 7/8", 15/16", 1", 1-1/16", 1-1/8", 1-3/16", 1-1/4", 1-5/16"

16 Deep SAE Sockets: 3/8", 7/16", 1/2", 9/16", 5/8", 11/16", 3/4", 13/16", 7/8", 15/16", 1", 1-1/16", 1-1/8", 1-3/16", 1-1/4", 1-5/16"

5" Extension, 10" Extension, 45 Tooth Ratchet, Universal Joint, Flex Handle, T-Handle

Includes Blow Mold Case.

43 Piece 6 Point Standard/Deep Metric Socket Set

Part No. D018013



Set Content:

19 Standard Metric Sockets: 10, 11, 12, 13, 14, 15, 16, 17, 18, 19, 20, 21, 22, 23, 24, 25, 26, 27, 28mm

18 Deep Metric Sockets: 10, 12, 13, 14, 15, 16, 17, 18, 19, 20, 21, 22, 23, 24, 25, 26, 27, 28mm

5" Extension, 10" Extension, 45 Tooth Ratchet, Universal Joint, Flex Handle, T-Handle

Includes Blow Mold Case.

41 Piece 6 Point Standard SAE/Metric Socket Set

Part No. D018010



Set Content:

16 Standard SAE Sockets: 3/8", 7/16", 1/2", 9/16", 5/8", 11/16", 3/4", 13/16", 7/8", 15/16", 1", 1-1/16", 1-1/8", 1-3/16", 1-1/4", 1-5/16"

19 Standard Metric Sockets: 10, 11, 12, 13, 14, 15, 16, 17, 18, 19, 20, 21, 22, 23, 24, 25, 26, 27, 28mm
5" Extension, 10" Extension, 45 Tooth Ratchet, Universal Joint, Flex Handle, T-Handle

Includes Blow Mold Case.

41 Piece 12 Point Standard SAE/Metric Socket Set

Part No. D018011



Set Content:

16 Standard SAE Sockets: 3/8", 7/16", 1/2", 9/16", 5/8", 11/16", 3/4", 13/16", 7/8", 15/16", 1", 1-1/16", 1-1/8", 1-3/16", c1-1/4", 1-5/16"

19 Standard Metric Sockets: 10, 11, 12, 13, 14, 15, 16, 17, 18, 19, 20, 21, 22, 23, 24, 25, 26, 27, 28mm
5" Extension, 10" Extension, 45 Tooth Ratchet, Universal Joint, Flex Handle, T-Handle

Includes Blow Mold Case.



Hand Socket Attachments



Quick Release Ratchet-Chrome Handle

Part No.	Length (inches)	Weight (lbs)	No. of Teeth
D012301	9.33	1.46	45

Quick Release Ratchet-Comfort Handle

Part No.	Length (inches)	Weight (lbs)	No. of Teeth
D012302	9.76	1.46	72

Flex Head Ratchet

Part No.	Length (inches)	Weight (lbs)	No. of Teeth
D012308	17.75	2.12	48

Flex Handles

Part No.	Length (inches)	Weight (lbs)
D012800	14.96	1.41
D012803	26.25	3.20

Chrome Extensions

Part No.	Length (inches)	Weight (lbs)
D012005	5.00	0.50
D012010	10.00	0.97

Chrome Extensions with Quick Release

Part No.	Length (inches)	Weight (lbs)
D012023	3.00	0.30
D012025	5.00	0.50
D012030	10.00	0.94

Sliding T-Handle

Part No.	Length (inches)	Weight (lbs)
D012500	9.75	0.15

Universal Joint

Part No.	Length (inches)	Weight (lbs)
D012600	2.76	0.33

Adapter

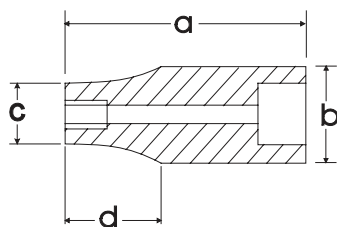
Part No.	Length (inches)	Female	Male	Weight (lbs)
D012701	1.42	1/2"	3/8"	0.15

Hand Sockets

SAE Standard Chrome Sockets

Size	Drive		Overall Length (a) inches	Drive End (b) inches	Hex End (c) inches	Taper Length (d) inches	Net Weight (lbs)
	6 POINT	12 POINT					
3/8"	D016312	D015412	1.50	0.86	0.57	0.67	0.12
7/16"	D016314	D015414	1.50	0.86	0.67	0.67	0.12
1/2"	D016316	D015416	1.50	0.86	0.73	0.67	0.12
9/16"	D016318	D015418	1.50	0.86	0.81	0.67	0.12
5/8"	D016320	D015420	1.50	0.86	0.86	0.00	0.13
11/16"	D016322	D015422	1.50	0.94	0.94	0.00	0.14
3/4"	D016324	D015424	1.50	1.02	1.02	0.00	0.15
13/16"	D016326	D015426	1.50	1.09	1.09	0.00	0.17
7/8"	D016328	D015428	1.50	1.17	1.17	0.00	0.21
15/16"	D016330	D015430	1.57	1.25	1.25	0.00	0.24
1"	D016332	D015432	1.65	1.33	1.33	0.00	0.31
1-1/16"	D016334	D015434	1.65	1.41	1.41	0.00	0.32
1-1/8"	D016336	D015436	1.69	1.49	1.49	0.00	0.32
1-3/16"	D016338	D015438	1.73	1.57	1.57	0.00	0.37
1-1/4"	D016340	D015440	1.73	1.65	1.65	0.00	0.41
1-5/16"	D016342	D015442	1.73	1.72	1.72	0.00	0.43

* Meets A.N.S.I. standards



SAE Deep Chrome Sockets

Size	Drive		Overall Length (a) inches	Drive End (b) inches	Hex End (c) inches	Taper Length (d) inches	Net Weight (lbs)
	6 POINT	12 POINT					
3/8"	D016512	D015612	3.03	0.86	0.52	1.81	0.17
7/16"	D016514	D015614	3.03	0.86	0.57	1.81	0.17
1/2"	D016516	D015616	3.03	0.86	0.67	1.81	0.18
9/16"	D016518	D015618	3.03	0.86	0.73	1.81	0.21
5/8"	D016520	D015620	3.03	0.86	0.81	1.81	0.23
11/16"	D016522	D015622	3.03	0.86	0.86	0.00	0.27
3/4"	D016524	D015624	3.03	0.94	0.94	0.00	0.29
13/16"	D016526	D015626	3.03	1.02	1.02	0.00	0.36
7/8"	D016528	D015628	3.03	1.09	1.09	0.00	0.46
15/16"	D016530	D015630	3.03	1.17	1.17	0.00	0.49
1"	D016532	D015632	3.03	1.25	1.25	0.00	0.54
1-1/16"	D016534	D015634	3.03	1.33	1.33	0.00	0.56
1-1/8"	D016536	D015636	3.03	1.41	1.41	0.00	0.65
1-3/16"	D016538	D015638	3.03	1.49	1.49	0.00	0.73
1-1/4"	D016540	D015640	3.03	1.65	1.65	0.00	0.93
1-5/16"	D016542	D015642	3.03	1.72	1.72	0.00	0.99

* Meets A.N.S.I. standards





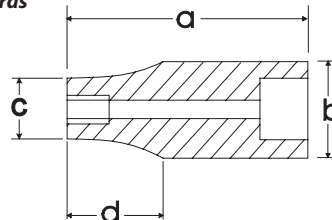
Hand Sockets



Metric Standard Chrome Sockets

Size	Drive		Overall Length (a) inches	Drive End (b) inches	Hex End (c) inches	Taper Length (d) inches	Net Weight (lbs)
	6 TORX	12 TORX					
10 mm	D016010	D015110	1.50	0.86	0.59	0.67	0.11
11 mm	D016011	D015111	1.50	0.86	0.64	0.67	0.11
12 mm	D016012	D015112	1.50	0.86	0.69	0.67	0.12
13 mm	D016013	D015113	1.50	0.86	0.74	0.67	0.12
14 mm	D016014	D015114	1.50	0.86	0.80	0.67	0.12
15 mm	D016015	D015115	1.50	0.86	0.83	0.67	0.12
16 mm	D016016	D015116	1.50	0.86	0.86	0.00	0.13
17 mm	D016017	D015117	1.50	0.94	0.94	0.00	0.14
18 mm	D016018	D015118	1.50	1.02	1.02	0.00	0.17
19 mm	D016019	D015119	1.50	1.02	1.02	0.00	0.17
20 mm	D016020	D015120	1.50	1.09	1.09	0.00	0.18
21 mm	D016021	D015121	1.50	1.09	1.09	0.00	0.21
22 mm	D016022	D015122	1.50	1.17	1.17	0.00	0.21
23 mm	D016023	D015123	1.57	1.25	1.25	0.00	0.26
24 mm	D016024	D015124	1.57	1.25	1.25	0.00	0.26
25 mm	D016025	D015125	1.57	1.33	1.33	0.00	0.26
26 mm	D016026	D015126	1.65	1.33	1.33	0.00	0.30
27 mm	D016027	D015127	1.65	1.41	1.41	0.00	0.32
28 mm	D016028	D015128	1.69	1.49	1.49	0.00	0.36
29 mm	D016029		1.69	1.49	1.49	0.00	0.36
30 mm	D016030	D015130	1.73	1.57	1.57	0.00	0.38
31 mm	D016031		1.73	1.57	1.57	0.00	0.38
32 mm	D016032	D015132	1.73	1.65	1.65	0.00	0.39

* Meets A.N.S.I. standards



Metric Deep Chrome Sockets

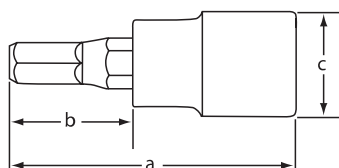
Size	Drive		Overall Length (a) inches	Drive End (b) inches	Hex End (c) inches	Taper Length (d) inches	Net Weight (lbs)
	6 TORX	12 TORX					
10 mm	D016210	D015710	3.03	0.86	0.59	1.81	0.17
11 mm	D016211	D015711	3.03	0.86	0.64	1.81	0.18
12 mm	D016212	D015712	3.03	0.86	0.69	1.81	0.19
13 mm	D016213	D015713	3.03	0.86	0.74	1.81	0.21
14 mm	D016214	D015714	3.03	0.86	0.80	1.81	0.23
15 mm	D016215	D015715	3.03	0.86	0.83	1.81	0.24
16 mm	D016216	D015716	3.03	0.86	0.86	0.00	0.27
17 mm	D016217	D015717	3.03	0.94	0.94	0.00	0.29
18 mm	D016218	D015718	3.03	1.02	1.02	0.00	0.35
19 mm	D016219	D015719	3.03	1.02	1.02	0.00	0.36
20 mm	D016220	D015720	3.03	1.09	1.09	0.00	0.38
21 mm	D016221	D015721	3.03	1.09	1.09	0.00	0.46
22 mm	D016222	D015722	3.03	1.17	1.17	0.00	0.49
23 mm	D016223	D015723	3.03	1.25	1.25	0.00	0.52
24 mm	D016224	D015724	3.03	1.25	1.25	0.00	0.54
25 mm	D016225	D015725	3.03	1.33	1.33	0.00	0.56
26 mm	D016226	D015726	3.03	1.33	1.33	0.00	0.64
27 mm	D016227	D015727	3.03	1.41	1.41	0.00	0.65
28 mm	D016228		3.03	1.49	1.49	0.00	0.70
29 mm	D016229		3.03	1.49	1.49	0.00	0.73
30 mm	D016230		3.03	1.57	1.57	0.00	0.78
31 mm	D016231		3.03	1.57	1.57	0.00	0.85
32 mm	D016232		3.03	1.65	1.65	0.00	0.93

* Meets A.N.S.I. standards

Hex Head Sockets SAE-Standard Length

Size	Part No.	Overall Length (a) inches	Bit Length (b) inches	Drive End Width (c) inches	Net Weight (lbs)
1/4"	D013058	2.44	0.94	0.86	0.14
5/16"	D013060	2.44	0.94	0.86	0.15
3/8"	D013062	2.44	0.94	0.86	0.18
7/16"	D013064	2.44	0.94	0.94	0.23
1/2"	D013066	2.44	0.94	0.94	0.33
9/16"	D013068	2.44	0.94	0.94	0.33
5/8"	D013070	2.44	0.94	1.02	0.40
3/4"	D013074	2.44	0.94	1.02	0.52

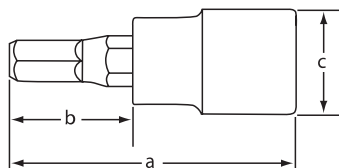
* Meets A.N.S.I. standards



Hex Head Sockets SAE-Long

Size	Part No.	Overall Length (a) inches	Bit Length (b) inches	Drive End Width (c) inches	Net Weight (lbs)
1/4"	D013458	3.94	2.44	0.86	0.17
5/16"	D013460	3.94	2.44	0.86	0.19
3/8"	D013462	3.94	2.44	0.86	0.24
7/16"	D013464	3.94	2.44	0.94	0.32
1/2"	D013466	3.94	2.44	0.94	0.43
9/16"	D013468	3.94	2.44	0.94	0.43
5/8"	D013470	3.94	2.44	1.02	0.60
3/4"	D013474	3.94	2.44	1.02	0.73

* Meets A.N.S.I. standards



Hex Head Sockets Metric-Standard Length

Size	Part No.	Overall Length (a) inches	Bit Length (b) inches	Drive End Width (c) inches	Net Weight (lbs)
6 mm	D013006	2.44	0.94	0.86	0.14
8 mm	D013008	2.44	0.94	0.86	0.15
10 mm	D013010	2.44	0.94	0.86	0.18
12 mm	D013012	2.44	0.94	0.94	0.23
14 mm	D013014	2.44	0.94	0.94	0.33
17 mm	D013017	2.44	0.94	1.02	0.43
19 mm	D013019	2.44	0.94	1.02	0.52

* Meets A.N.S.I. standards

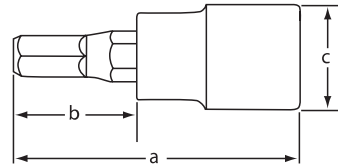




Hex Head Sockets Metric-Long

Size	Part No.	Overall Length (a) inches	Bit Length (b) inches	Drive End Width (c) inches	Net Weight (lbs)
6 mm	D013406	3.94	2.44	0.86	0.17
8 mm	D013408	3.94	2.44	0.86	0.19
10 mm	D013410	3.94	2.44	0.86	0.24
12 mm	D013412	3.94	2.44	0.94	0.32
14 mm	D013414	3.94	2.44	0.94	0.43
17 mm	D013417	3.94	2.44	1.02	0.60
19 mm	D013419	3.94	2.44	1.02	0.73

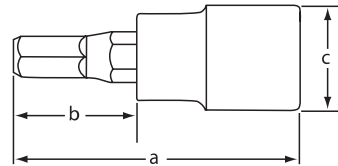
* Meets A.N.S.I. standards



Torx® Head Sockets-Standard Length

Size	Part No.	Overall Length (a) inches	Bit Length (b) inches	Drive End Width (c) inches	Net Weight (lbs)
T20	D013320	2.44	0.94	0.86	0.14
T25	D013325	2.44	0.94	0.86	0.14
T27	D013327	2.44	0.94	0.86	0.14
T30	D013330	2.44	0.94	0.86	0.14
T40	D013340	2.44	0.94	0.86	0.14
T45	D013345	2.44	0.94	0.86	0.15
T50	D013350	2.44	0.94	0.86	0.15

* Meets A.N.S.I. standards



Torx® Head Sockets-Long

Size	Part No.	Overall Length (a) inches	Bit Length (b) inches	Drive End Width (c) inches	Net Weight (lbs)
T20	D013720	3.94	2.44	0.86	0.20
T25	D013725	3.94	2.44	0.86	0.20
T27	D013727	3.94	2.44	0.86	0.22
T30	D013730	3.94	2.44	0.86	0.22
T40	D013740	3.94	2.44	0.86	0.22
T45	D013745	3.94	2.44	0.86	0.25
T50	D013750	3.94	2.44	0.86	0.25

* Meets A.N.S.I. standards

17 Piece 6 Point Standard Impact SAE Socket Set

Part No. D018020



Set Content:

17 Standard SAE Impact Sockets: 3/8", 7/16", 1/2", 9/16", 5/8", 11/16", 3/4", 13/16", 7/8", 15/16", 1", 1-1/16", 1-1/8", 1-3/16", 1-1/4", 1-5/16", 1-3/8"

Includes Rail.

19 Piece 6 Point Standard Impact SAE Socket Set

Part No. D018024



Set Content:

19 Standard SAE Impact Sockets: 3/8", 7/16", 1/2", 9/16", 5/8", 11/16", 3/4", 13/16", 7/8", 15/16", 1", 1-1/16", 1-1/8", 1-3/16", 1-1/4", 1-5/16", 1-3/8", 1-7/16", 1-1/2"

Includes Blow Mold Case.



Impact Sockets

13 Piece 6 Point Deep Impact SAE Socket Set

Part No. D018021



Set Content:

13 Deep SAE Impact Sockets: 1/2", 9/16", 5/8", 11/16", 3/4", 13/16", 7/8", 15/16", 1", 1-1/16", 1-1/8", 1-3/16", 1-1/4"
Includes Rail.

19 Piece 6 Point Deep Impact SAE Socket Set

Part No. D018026



Set Content:

19 Piece Deep SAE Impact Sockets: 3/8", 7/16", 1/2", 9/16", 5/8", 11/16", 3/4", 13/16", 7/8", 15/16", 1", 1-1/16", 1-1/8", 1-3/16", 1-1/4", 1-5/16", 1-3/8", 1-7/16", 1-1/2"
Includes Blow Mold Case.

14 Piece 6 Point Standard Impact Metric Socket Set

Part No. D018023



Set Content:

14 Standard Metric Impact Sockets: 10, 11, 12, 13, 14, 15, 16, 17, 18, 19, 20, 21, 22, 23mm
Includes Rail.

14 Piece 6 Point Deep Impact Metric Socket Set

Part No. D018022



Set Content:

14 Deep Metric Impact Sockets: 10, 11, 12, 13, 14, 15, 16, 17, 18, 19, 20, 21, 22, 23mm
Includes Rail.

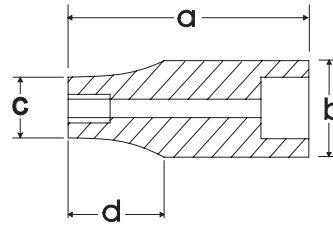


Impact accessories can be found on page 63.

SAE Standard Impact Sockets

Size	Part No.	Overall Length (a) inches	Drive End Width (b) inches	Hex End Length (c) inches	Taper Length (d) inches	Net Weight (lbs)
3/8"	D014312	1.50	0.86	0.67	0.35	0.15
7/16"	D014314	1.50	0.86	0.71	0.35	0.15
1/2"	D014316	1.50	0.86	0.79	0.35	0.15
9/16"	D014318	1.50	0.94	0.87	0.35	0.18
5/8"	D014320	1.50	0.94	0.94	0.00	0.18
11/16"	D014322	1.50	1.02	1.02	0.00	0.22
3/4"	D014324	1.57	1.09	1.09	0.00	0.23
13/16"	D014326	1.57	1.17	1.17	0.00	0.29
7/8"	D014328	1.65	1.25	1.25	0.00	0.33
15/16"	D014330	1.73	1.33	1.33	0.00	0.40
1"	D014332	1.73	1.41	1.41	0.00	0.44
1-1/16"	D014334	1.81	1.49	1.49	0.00	0.55
1-1/8"	D014336	1.81	1.50	1.57	0.55	0.60
1-3/16"	D014338	1.81	1.50	1.65	0.55	0.66
1-1/4"	D014340	1.81	1.50	1.72	0.55	0.68
1-5/16"	D014342	1.81	1.50	1.76	0.63	0.73
1-3/8"	D014344	1.97	1.50	1.88	0.63	0.82
1-7/16"	D014346	1.97	1.50	1.96	0.63	0.90
1-1/2"	D014348	1.97	1.50	2.04	0.63	0.97

* Meets A.N.S.I. standards



SAE Deep Impact Sockets

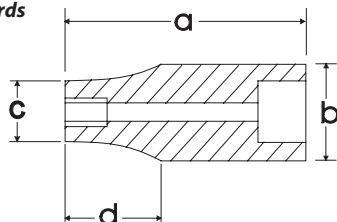
Size	Part No.	Overall Length (a) inches	Drive End Width (b) inches	Hex End Length (c) inches	Taper Length (d) inches	Net Weight (lbs)
3/8"	D014512	3.07	0.86	0.67	0.63	0.35
7/16"	D014514	3.07	0.86	0.71	0.63	0.35
1/2"	D014516	3.07	0.94	0.79	0.63	0.42
9/16"	D014518	3.07	0.94	0.88	0.63	0.42
5/8"	D014520	3.07	0.94	0.94	0.00	0.42
11/16"	D014522	3.07	1.02	1.02	0.00	0.46
3/4"	D014524	3.07	1.09	1.09	0.00	0.53
13/16"	D014526	3.07	1.17	1.17	0.00	0.57
7/8"	D014528	3.07	1.25	1.25	0.00	0.66
15/16"	D014530	3.07	1.33	1.33	0.00	0.66
1"	D014532	3.07	1.41	1.41	0.00	0.77
1-1/16"	D014534	3.07	1.49	1.49	0.00	0.88
1-1/8"	D014536	3.07	1.50	1.57	0.55	0.88
1-3/16"	D014538	3.07	1.50	1.65	0.55	0.95
1-1/4"	D014540	3.07	1.50	1.72	0.55	0.99
1-5/16"	D014542	3.07	1.50	1.76	0.63	1.21
1-3/8"	D014544	3.07	1.50	1.88	0.63	1.28
1-7/16"	D014546	3.07	1.50	1.96	0.50	1.25
1-1/2"	D014548	3.07	1.50	2.05	0.50	1.36

* Meets A.N.S.I. standards

Metric Standard Impact Sockets

Size	Part No.	Overall Length (a) inches	Drive End Width (b) inches	Hex End Length (c) inches	Taper Length (d) inches	Net Weight (lbs)
8 mm	D014008	1.50	0.86	0.55	0.35	0.15
9 mm	D014009	1.50	0.86	0.59	0.35	0.15
10 mm	D014010	1.50	0.86	0.67	0.35	0.15
11 mm	D014011	1.50	0.86	0.71	0.35	0.15
12 mm	D014012	1.50	0.86	0.75	0.35	0.15
13 mm	D014013	1.50	0.86	0.79	0.35	0.15
14 mm	D014014	1.50	0.94	0.87	0.35	0.18
15 mm	D014015	1.50	0.94	0.94	0.00	0.18
16 mm	D014016	1.50	0.94	0.94	0.00	0.18
17 mm	D014017	1.50	1.02	1.02	0.00	0.22
18 mm	D014018	1.50	1.02	1.02	0.00	0.22
19 mm	D014019	1.57	1.09	1.09	0.00	0.23
20 mm	D014020	1.57	1.17	1.17	0.00	0.29
21 mm	D014021	1.57	1.17	1.17	0.00	0.29
22 mm	D014022	1.65	1.25	1.25	0.00	0.33
23 mm	D014023	1.65	1.25	1.25	0.00	0.40
24 mm	D014024	1.73	1.33	1.33	0.00	0.40
25 mm	D014025	1.73	1.37	1.37	0.00	0.44
26 mm	D014026	1.73	1.41	1.41	0.00	0.44
27 mm	D014027	1.81	1.49	1.49	0.00	0.55
28 mm	D014028	1.81	1.50	1.57	0.55	0.60
29 mm	D014029	1.81	1.50	1.57	0.55	0.60
30 mm	D014030	1.81	1.50	1.65	0.55	0.66
31 mm	D014031	1.81	1.50	1.65	0.55	0.68
32 mm	D014032	1.81	1.50	1.72	0.55	0.68
36 mm	D014036	1.97	1.50	1.96	0.63	0.90

* Meets A.N.S.I. standards



Impact accessories can be found on page 63.

Metric Deep Impact Sockets

Size	Part No.	Overall Length (a) inches	Drive End Width (b) inches	Hex End Length (c) inches	Taper Length (d) inches	Net Weight (lbs)
8 mm	D014208	3.07	0.86	0.55	0.63	0.35
9 mm	D014209	3.07	0.86	0.59	0.63	0.35
10 mm	D014210	3.07	0.86	0.67	0.63	0.35
11 mm	D014211	3.07	0.86	0.71	0.63	0.35
12 mm	D014212	3.07	0.86	0.75	0.63	0.35
13 mm	D014213	3.07	0.94	0.79	0.63	0.42
14 mm	D014214	3.07	0.94	0.87	0.63	0.42
15 mm	D014215	3.07	0.94	0.94	0.00	0.42
16 mm	D014216	3.07	0.94	0.94	0.00	0.42
17 mm	D014217	3.07	1.02	1.02	0.00	0.46
18 mm	D014218	3.07	1.02	1.02	0.00	0.53
19 mm	D014219	3.07	1.09	1.09	0.00	0.53
20 mm	D014220	3.07	1.17	1.17	0.00	0.53
21 mm	D014221	3.07	1.17	1.17	0.00	0.57
22 mm	D014222	3.07	1.25	1.25	0.00	0.66
23 mm	D014223	3.07	1.25	1.25	0.00	0.66
24 mm	D014224	3.07	1.33	1.33	0.00	0.66
27 mm	D014227	3.07	1.49	1.49	0.00	0.88
30 mm	D014230	3.07	1.50	1.65	0.55	0.95
36 mm	D014236	3.07	1.50	1.96	0.63	1.28

* Meets A.N.S.I. standards





Hand Sockets

21 Piece 12 Point Standard SAE Set

Part No. D023000



Set Content:

16 Regular SAE Sockets: 7/8", 15/16", 1", 1-1/16", 1-1/8", 1-3/16", 1-1/4", 1-5/16", 1-3/8", 1-7/16", 1-1/2", 1-5/8", 1-3/4", 1-13/16", 1-7/8", 2"

4" Extension, 8" Extension, 16" Extension, Flex Handle, 24 Tooth Ratchet

Includes Blow Mold Case.

20 Piece 12 Point Standard Metric Set

Part No. D023001



Set Content:

15 Regular Metric Sockets: 19, 20, 21, 22, 23, 24, 25, 26, 27, 28, 29, 30, 32, 35, 36mm

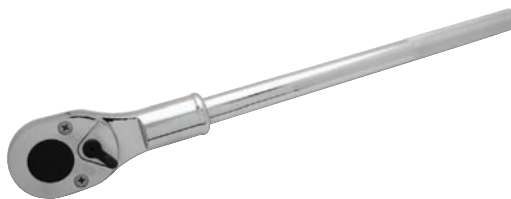
4" Extension, 8" Extension, 16" Extension, Flex Handle, 24 Tooth Ratchet

Includes Blow Mold Case.

Hand Socket Attachments

Ratchet-Chrome Handle

Part No.	Length (inches)	Weight (lbs)	No. of Teeth
D019301	19.69	4.34	24



Flex Handle

Part No.	Length (inches)	Weight (lbs)
D019805	18.70	4.08



Chrome Extensions

Part No.	Length (inches)	Weight (lbs)
D019004	4.00	0.92
D019008	8.00	1.63
D019016	16.00	3.06



Sliding T-Handle

Part No.	Length (inches)	Weight (lbs)
D019501	17.72	3.06

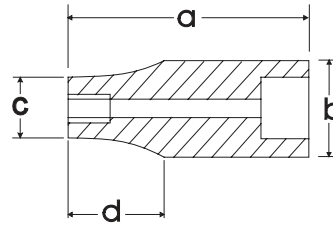




SAE Standard Chrome Sockets

Size	Part No.	Overall Length (a) inches	Drive End Width (b) inches	Hex End Length (c) inches	Taper Length (d) inches	Net Weight (lbs)
7/8"	D022428	1.97	1.42	1.30	0.79	0.49
15/16"	D022430	1.97	1.42	1.36	0.79	0.49
1"	D022432	1.97	1.42	1.44	0.79	0.49
1-1/16"	D022434	2.05	1.42	1.50	0.83	0.49
1-1/8"	D022436	2.05	1.50	1.57	0.83	0.57
1-3/16"	D022438	2.13	1.50	1.65	0.87	0.60
1-1/4"	D022440	2.20	1.50	1.73	0.87	0.66
1-5/16"	D022442	2.20	1.50	1.81	0.87	0.77
1-3/8"	D022444	2.28	1.65	1.89	0.91	0.82
1-7/16"	D022446	2.28	1.65	1.97	0.91	0.97
1-1/2"	D022448	2.36	1.77	2.05	0.91	1.04
1-9/16"	D022450	2.44	1.77	2.13	0.91	1.10
1-5/8"	D022452	2.52	1.77	2.20	1.02	1.15
1-11/16"	D022454	2.56	1.77	2.28	1.02	1.19
1-3/4"	D022456	2.60	1.89	2.36	1.02	1.32
1-13/16"	D022458	2.68	1.89	2.44	1.02	1.48
1-7/8"	D022460	2.76	1.89	2.52	1.10	1.57
2"	D022464	2.83	1.89	2.68	1.18	1.65

* Meets A.N.S.I. standards



Metric Standard Chrome Sockets

Size	Part No.	Overall Length (a) inches	Drive End Width (b) inches	Hex End Length (c) inches	Taper Length (d) inches	Net Weight (lbs)
19 mm	D022119	1.95	1.42	1.14	0.79	0.49
20 mm	D022120	1.95	1.42	1.18	0.79	0.49
21 mm	D022121	1.97	1.42	1.26	0.79	0.49
22 mm	D022122	1.97	1.42	1.30	0.79	0.49
23 mm	D022123	1.97	1.42	1.34	0.79	0.49
24 mm	D022124	1.97	1.42	1.36	0.79	0.49
25 mm	D022125	1.97	1.42	1.44	0.79	0.49
26 mm	D022126	1.97	1.42	1.46	0.79	0.49
27 mm	D022127	2.05	1.42	1.50	0.83	0.49
28 mm	D022128	2.05	1.50	1.54	0.83	0.57
29 mm	D022129	2.05	1.50	1.57	0.83	0.57
30 mm	D022130	2.13	1.50	1.65	0.87	0.60
32 mm	D022132	2.20	1.50	1.73	0.87	0.66
35 mm	D022135	2.28	1.65	1.89	0.87	0.82
36 mm	D022136	2.28	1.65	1.97	0.91	0.97
38 mm	D022138	2.28	1.77	2.05	0.91	1.01
41 mm	D022141	2.52	1.77	2.20	1.02	1.15
46 mm	D022146	2.68	1.89	2.44	1.02	1.48
50 mm	D022150	2.83	1.89	2.68	1.18	1.72

* Meets A.N.S.I. standards

10 Piece 6 Point Standard Impact SAE Set

Part No. D021000



Set Content:

10 Regular SAE Impact Sockets: 15/16", 1", 1-1/16", 1-1/8", 1-1/4", 1-5/16", 1-3/8", 1-7/16", 1-1/2", 1-5/8"

Includes Blow Mold Case.

10 Piece 6 Point Deep Impact SAE Set

Part No. D021001



Set Content:

10 Deep SAE Impact Sockets: 15/16", 1", 1-1/16", 1-1/8", 1-1/4", 1-5/16", 1-3/8", 1-7/16", 1-1/2", 1-5/8"

Includes Blow Mold Case.



Impact Sockets

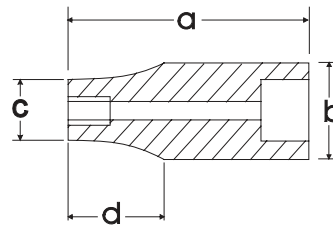
SAE Standard Impact Sockets



Impact accessories can be found on page 63.

Size	Part No.	Overall Length (a) inches	Drive End Width (b) inches	Hex End Length (c) inches	Taper Length (d) inches	Net Weight (lbs)
3/4"	D020324	2.05	1.49	1.19	0.94	0.51
13/16"	D020326	2.05	1.49	1.26	0.94	0.53
7/8"	D020328	2.05	1.49	1.34	0.94	0.55
15/16"	D020330	2.05	1.49	1.42	0.94	0.55
1"	D020332	2.05	1.49	1.49	0.00	0.57
1-1/16"	D020334	2.05	1.57	1.57	0.00	0.62
1-1/8"	D020336	2.05	1.65	1.65	0.00	0.73
1-3/16"	D020338	2.05	1.72	1.72	0.00	0.82
1-1/4"	D020340	2.05	1.73	1.80	0.00	0.82
1-5/16"	D020342	2.20	1.73	1.88	0.00	0.90
1-3/8"	D020344	2.20	1.73	1.96	0.00	0.97
1-7/16"	D020346	2.20	1.73	2.04	0.00	0.99
1-1/2"	D020348	2.20	1.73	2.08	0.00	1.01
1-9/16"	D020350	2.44	1.73	2.20	0.00	1.23
1-5/8"	D020352	2.44	1.73	2.28	0.00	1.30
1-11/16"	D020354	2.44	1.73	2.50	0.00	1.54
1-3/4"	D020356	2.44	1.73	2.55	0.00	1.65
1-13/16"	D020358	2.68	1.73	2.63	0.00	1.70
1-7/8"	D020360	2.68	1.73	2.67	0.00	1.74
1-15/16"	D020362	2.76	1.73	2.75	0.00	1.74
2"	D020364	2.83	2.13	2.79	0.00	1.94
2-1/16"	D020366	2.83	2.13	2.91	0.00	2.03
2-1/8"	D020368	2.83	2.13	3.02	0.00	2.76
2-3/16"	D020370	2.91	2.13	3.02	0.00	2.76
2-1/4"	D020372	2.91	2.13	3.14	0.00	3.20
2-5/16"	D020374	2.95	2.13	3.22	0.00	3.31
2-3/8"	D020376	2.95	2.13	3.30	0.00	3.31

* Meets A.N.S.I. standards



SAE Deep Impact Sockets



Size	Part No.	Overall Length (a) inches	Drive End Width (b) inches	Hex End Length (c) inches	Taper Length (d) inches	Net Weight (lbs)
3/4"	D020524	3.54	1.49	1.18	1.97	0.86
13/16"	D020526	3.54	1.49	1.26	1.97	0.88
7/8"	D020528	3.54	1.49	1.34	1.97	0.97
15/16"	D020530	3.54	1.49	1.42	1.97	0.97
1"	D020532	3.54	1.49	1.49	0.00	0.99
1-1/16"	D020534	3.54	1.57	1.57	0.00	1.12
1-1/8"	D020536	3.54	1.65	1.65	0.00	1.26
1-3/16"	D020538	3.54	1.72	1.72	0.00	1.34
1-1/4"	D020540	3.54	1.73	1.80	0.00	1.39
1-5/16"	D020542	3.54	1.73	1.88	0.00	1.46
1-3/8"	D020544	3.54	1.73	1.96	0.00	1.70
1-7/16"	D020546	3.54	1.73	2.04	0.00	1.70
1-1/2"	D020548	3.62	1.73	2.08	0.00	1.83
1-9/16"	D020550	3.62	1.73	2.20	0.00	1.90
1-5/8"	D020552	3.62	1.73	2.28	0.00	1.92

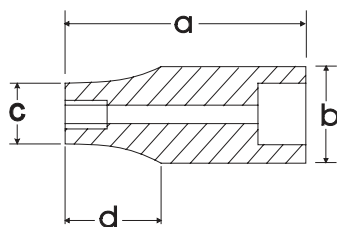
* Meets A.N.S.I. standards

Impact Sockets

Metric Impact Sockets

Size	Part No.	Overall Length (a) inches	Drive End Width (b) inches	Hex End Length (c) inches	Taper Length (d) inches	Net Weight (lbs)
24 mm	D020024	2.05	1.49	1.42	0.94	0.55
27 mm	D020027	2.05	1.57	1.57	0.00	0.62
28 mm	D020028	2.05	1.65	1.65	0.00	0.71
30 mm	D020030	2.05	1.72	1.72	0.00	0.82
32 mm	D020032	2.05	1.73	1.73	0.00	0.84
33 mm	D020033	2.20	1.73	1.88	0.00	0.90
34 mm	D020034	2.20	1.73	1.88	0.00	0.90
35 mm	D020035	2.20	1.73	1.96	0.00	1.04
36 mm	D020036	2.20	1.73	2.04	0.00	1.04
38 mm	D020038	2.20	1.73	2.08	0.00	1.04
40 mm	D020040	2.44	1.73	2.20	0.00	1.19
41 mm	D020041	2.44	1.73	2.28	0.00	1.30
42 mm	D020042	2.44	1.73	2.39	0.00	1.46
43 mm	D020043	2.48	1.73	2.47	0.00	1.54
46 mm	D020046	2.48	1.73	2.63	0.00	1.70
50 mm	D020050	2.83	2.13	2.79	0.00	2.14

* Meets A.N.S.I. standards



Impact accessories can be found on page 63.

Metric Deep Impact Sockets

Size	Part No.	Overall Length (a) inches	Drive End Width (b) inches	Hex End Length (c) inches	Taper Length (d) inches	Net Weight (lbs)
19 mm	D020219	3.54	1.49	1.18	1.97	0.86
27 mm	D020227	3.54	1.57	1.57	0.00	1.10
30 mm	D020230	3.54	1.72	1.72	0.00	1.37
32 mm	D020232	3.54	1.73	1.80	0.00	1.39
33 mm	D020233	3.54	1.73	1.88	0.00	1.48
35 mm	D020235	3.54	1.73	1.96	0.00	1.70
36 mm	D020236	3.54	1.73	2.04	0.00	1.65
38 mm	D020238	3.62	1.73	2.08	0.00	1.83
41 mm	D020241	3.62	1.73	2.28	0.00	1.94
43 mm	D020243	3.62	1.73	2.47	0.00	2.31

* Meets A.N.S.I. standards





Hand Sockets

21 Piece 12 Point Standard SAE Set

Part No. D027001



Set Content:

17 Regular SAE Sockets: 1-7/16", 1-1/2", 1-5/8", 1-11/16", 1-3/4", 1-13/16", 1-7/8", 2", 2-1/8", 2-3/16", 2-1/4", 2-3/8", 2-1/2", 2-5/8", 2-3/4", 2-15/16", 3-1/8"
8" Extension, 16" Extension, Sliding T-Head, 24 Tooth Ratchet

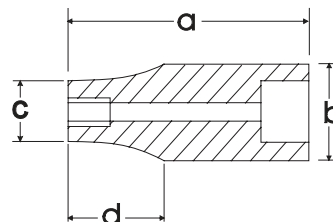
Includes Metal Case.

SAE Standard Chrome Sockets



Size	Part No.	Overall Length (a) inches	Drive End Width (b) inches	Hex End Length (c) inches	Taper Length (d) inches	Net Weight (lbs)
1-7/16"	D099446	2.56	1.77	2.05	0.98	1.04
1-1/2"	D099448	2.56	1.77	2.13	1.10	1.04
1-5/8"	D099450	2.76	1.77	2.24	1.10	1.19
1-11/16"	D099452	2.76	1.97	2.36	1.18	1.41
1-3/4"	D099454	2.95	1.97	2.48	1.18	1.70
1-13/16"	D099456	2.95	1.97	2.56	1.18	1.74
1-7/8"	D099458	2.95	1.97	2.64	1.18	2.12
2"	D099460	2.95	1.97	2.76	1.18	2.16
2-1/8"	D099464	3.15	2.17	2.91	1.26	2.25
2-3/16"	D099466	3.15	2.17	2.99	1.26	2.27
2-1/4"	D099468	3.15	2.17	3.07	1.26	2.31
2-3/8"	D099472	3.31	2.17	3.23	1.34	2.78
2-1/2"	D099476	3.43	2.17	3.39	1.34	2.87
2-5/8"	D099480	3.54	2.17	3.54	1.38	3.31
2-3/4"	D099482	3.66	2.36	3.70	1.38	3.84
2-15/16"	D099484	3.82	2.36	3.94	1.42	4.37
3-1/8"	D099488	4.06	2.36	4.13	1.42	4.63

* Meets A.N.S.I. standards



Attachments

Hand Socket Attachments

Ratchet-Chrome Handle

Part No.	Length (inches)	Weight (lbs)	No. of Teeth
D024301	24.25	10.20	24



Flex Handle

Part No.	Length (inches)	Weight (lbs)
D027800	26.00	4.08



Chrome Extensions

Part No.	Length (inches)	Weight (lbs)
D024008	8.00	2.45
D024015	16.00	4.20



Sliding T-Head

Part No.	Length (inches)	Weight (lbs)
D024500	3.25	1.40



Wrenches



Complete Assortment

Wide selection of combination, ratcheting, adjustable and pipe wrenches.

Large and Visible Markings

Laser etched markings on combination wrenches improve size identification and provides SAE/metric differentiation.

User-Friendly Design

Offset box end on most styles provides extra knuckle clearance.

Professional Grade

All wrenches meet ANSI standards.



Wrenches

12 Piece SAE Combination Wrench Set

Part No. D074202

Set Content:

12 SAE Combination Wrenches: 1/4", 5/16", 3/8", 7/16",
1/2", 9/16", 5/8", 11/16", 3/4", 13/16", 7/8", 15/16"



Includes Canvas Roll.

14 Piece SAE Combination Wrench Set

Part No. D074201

Set Content:

14 SAE Combination Wrenches: 3/8", 7/16", 1/2", 9/16", 5/8",
11/16", 3/4", 13/16", 7/8", 15/16", 1", 1-1/16", 1-1/8", 1-1/4"



Includes Canvas Roll.

Wrenches

12 Piece SAE Combination Wrench Set - Contractor Series

Part No. D074222

Set Content:

12 SAE Satin Finish Combination Wrenches:

1/4", 5/16", 3/8", 7/16", 1/2", 9/16", 5/8", 11/16", 3/4",
13/16", 7/8", 15/16"



Contractor Series - A superior alternative to raised panel wrenches.



16 Piece SAE Combination Wrench Set - Contractor Series

Part No. D074221

Set Content:

16 SAE Satin Finish Combination Wrenches:

1/4", 5/16", 3/8", 7/16", 1/2", 9/16", 5/8", 11/16",
3/4", 13/16", 7/8", 15/16", 1", 1-1/16", 1-1/8", 1-1/4"



Includes Canvas Roll.

Wrenches

11 Piece Metric Combination Wrench Set

Part No. D074204

Set Content:

11 Metric Combination Wrenches:

9, 10, 11, 12, 13, 14, 15, 16, 17, 18, 19mm



Includes Canvas Roll.

19 Piece Metric Combination Wrench Set

Part No. D074203

Set Content:

19 Metric Combination Wrenches:

6, 7, 8, 9, 10, 11, 12, 13, 14, 15, 16, 17,
18, 19, 20, 21, 22, 23, 24mm



Includes Canvas Roll.

Wrenches

11 Piece Metric Combination Wrench Set - Contractor Series

Part No. D074224

Set Content:

11 Metric Satin Finish Combination Wrenches:
9, 10, 11, 12, 13, 14, 15, 16, 17, 18, 19mm



Includes Canvas Roll.

19 Piece Metric Combination Wrench Set - Contractor Series

Part No. D074223

Set Content:

19 Metric Satin Finish Combination Wrenches:
6, 7, 8, 9, 10, 11, 12, 13, 14, 15, 16, 17,
18, 19, 20, 21, 22, 23, 24mm



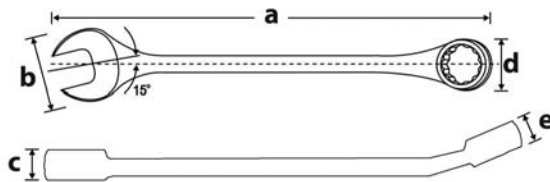
Includes Canvas Roll.

Wrenches

SAE Combination Wrenches - Mirror Chrome Finish

Size	Part No.	Overall Length (a) inches	Head Width (b) inches	Head Thickness (c) inches	Box End Width (d) inches	Box End Thickness (e) inches	Net Weight (lbs)
1/4"	D074008	5.04	0.54	0.17	0.41	0.18	0.05
5/16"	D074010	5.83	0.74	0.19	0.50	0.22	0.07
3/8"	D074012	6.06	0.81	0.23	0.61	0.32	0.10
7/16"	D074014	6.57	0.91	0.27	0.70	0.33	0.14
1/2"	D074016	7.01	1.04	0.28	0.80	0.35	0.16
9/16"	D074018	7.48	1.14	0.30	0.87	0.38	0.21
5/8"	D074020	8.07	1.28	0.33	0.96	0.42	0.27
11/16"	D074022	8.86	1.43	0.35	1.05	0.43	0.34
3/4"	D074024	9.76	1.52	0.36	1.11	0.44	0.39
13/16"	D074026	10.63	1.67	0.39	1.20	0.49	0.51
7/8"	D074028	11.50	1.83	0.41	1.31	0.51	0.63
15/16"	D074030	12.36	1.91	0.43	1.39	0.55	0.73
1"	D074032	13.23	1.98	0.45	1.44	0.57	0.93
1 1/16"	D074034	14.13	2.11	0.48	1.51	0.61	1.13
1 1/8"	D074036	15.35	2.25	0.51	1.70	0.62	1.46
1 1/4"	D074040	16.73	2.44	0.51	1.78	0.65	1.87

* Meets A.N.S.I. standards



Metric Combination Wrenches - Mirror Chrome Finish

Size	Part No.	Overall Length (a) inches	Head Width (b) inches	Head Thickness (c) inches	Box End Width (d) inches	Box End Thickness (e) inches	Net Weight (lbs)
6 mm	D074106	5.04	0.54	0.17	0.41	0.18	0.05
7 mm	D074107	5.43	0.60	0.18	0.46	0.20	0.06
8 mm	D074108	5.83	0.74	0.19	0.50	0.22	0.07
9 mm	D074109	6.06	0.81	0.23	0.61	0.32	0.10
10 mm	D074110	6.38	0.85	0.24	0.57	0.33	0.11
11 mm	D074111	6.57	0.91	0.27	0.70	0.33	0.14
12 mm	D074112	6.85	1.01	0.27	0.72	0.31	0.15
13 mm	D074113	7.01	1.04	0.28	0.80	0.35	0.16
14 mm	D074114	7.48	1.14	0.30	0.87	0.38	0.21
15 mm	D074115	8.07	1.28	0.33	0.96	0.42	0.27
16 mm	D074116	8.07	1.28	0.33	0.96	0.42	0.27
17 mm	D074117	8.86	1.43	0.35	1.05	0.43	0.34
18 mm	D074118	9.76	1.52	0.36	1.11	0.44	0.39
19 mm	D074119	9.76	1.52	0.36	1.11	0.44	0.39
20 mm	D074120	10.63	1.67	0.39	1.20	0.49	0.51
21 mm	D074121	10.63	1.67	0.39	1.20	0.49	0.51
22 mm	D074122	11.50	1.83	0.41	1.31	0.51	0.63
23 mm	D074123	12.36	1.91	0.43	1.39	0.55	0.73
24 mm	D074124	12.36	1.91	0.43	1.39	0.55	0.73
25 mm	D074125	13.23	1.98	0.45	1.44	0.57	0.93
26 mm	D074126	13.23	1.98	0.45	1.44	0.57	0.93
27 mm	D074127	14.13	2.11	0.48	1.51	0.61	1.13
28 mm	D074128	15.35	2.25	0.51	1.70	0.62	1.46
29 mm	D074129	15.35	2.25	0.51	1.70	0.62	1.46
30 mm	D074130	15.35	2.25	0.51	1.70	0.62	1.46
32 mm	D074132	16.73	2.44	0.51	1.78	0.65	1.87

* Meets A.N.S.I. standards



Wrenches



Contractor Series - A superior alternative to raised panel wrenches.



SAE Contractor Series Combination Wrenches - Satin Finish

Size	Part No.	Overall Length (a) inches	Head Width (b) inches	Head Thickness (c) inches	Box End Width (d) inches	Box End Thickness (e) inches	Net Weight (lbs)
1/4"	D074308	5.08	0.60	0.17	0.42	0.23	0.05
5/16"	D074310	5.59	0.73	0.19	0.51	0.26	0.07
3/8"	D074312	6.34	0.82	0.20	0.61	0.29	0.13
7/16"	D074314	6.61	0.91	0.23	0.68	0.31	0.14
1/2"	D074316	7.09	1.04	0.25	0.76	0.34	0.17
9/16"	D074318	7.60	1.06	0.25	0.79	0.34	0.24
5/8"	D074320	8.15	1.29	0.31	0.91	0.36	0.33
11/16"	D074322	8.94	1.35	0.31	0.96	0.41	0.40
3/4"	D074324	9.84	1.54	0.37	1.09	0.45	0.44
13/16"	D074326	10.67	1.71	0.39	1.21	0.50	0.62
7/8"	D074328	11.61	1.80	0.40	1.29	0.53	0.66
15/16"	D074330	12.48	1.95	0.41	1.36	0.56	0.84
1"	D074332	13.35	2.03	0.45	1.44	0.59	1.06
1 1/16"	D074334	14.25	2.18	0.48	1.52	0.62	1.28
1 1/8"	D074336	15.51	2.30	0.50	1.67	0.65	1.50
1 1/4"	D074340	16.89	2.56	0.53	1.80	0.71	1.94
1 5/16"	D074342	18.54	2.80	0.61	1.95	0.75	2.43
1 3/8"	D074344	18.54	2.80	0.61	1.95	0.75	2.43
1 7/16"	D074346	20.08	2.99	0.65	2.17	0.83	2.87
1 1/2"	D074348	20.08	2.99	0.65	2.17	0.83	2.87
1 5/8"	D074350	21.65	3.27	0.69	2.36	0.75	2.67
1 11/16"	D074352	21.65	3.27	0.69	2.36	0.75	2.67
1 3/4"	D074354	24.13	3.39	0.81	2.40	0.75	4.85
1 13/16"	D074356	24.13	3.39	0.81	2.40	0.75	4.85
1 7/8"	D074358	25.63	3.78	0.94	2.87	0.75	6.39
2"	D074360	25.63	3.78	0.94	2.87	0.75	6.39
2 1/8"	D074362	28.50	4.45	1.22	3.23	0.92	8.60
2 1/4"	D074364	28.50	4.45	1.22	3.23	0.92	8.60
2 3/8"	D074366	29.25	4.69	1.28	3.68	1.00	10.36
2 1/2"	D074368	29.25	4.69	1.28	3.68	1.00	10.36

* Meets A.N.S.I. standards

Metric Contractor Series Combination Wrenches - Satin Finish

Size	Part No.	Overall Length (a) inches	Head Width (b) inches	Head Thickness (c) inches	Box End Width (d) inches	Box End Thickness (e) inches	Net Weight (lbs)
6 mm	D074406	5.08	0.60	0.17	0.42	0.23	0.05
7 mm	D074407	5.31	0.64	0.18	0.46	0.24	0.06
8 mm	D074408	5.59	0.73	0.19	0.51	0.26	0.07
9 mm	D074409	6.10	0.76	0.19	0.54	0.26	0.11
10 mm	D074410	6.34	0.82	0.20	0.61	0.29	0.13
11 mm	D074411	6.61	0.91	0.23	0.68	0.31	0.14
12 mm	D074412	6.85	0.94	0.23	0.70	0.32	0.15
13 mm	D074413	7.09	1.04	0.25	0.76	0.34	0.17
14 mm	D074414	7.60	1.06	0.25	0.79	0.34	0.24
15 mm	D074415	7.87	1.21	0.28	0.89	0.35	0.29
16 mm	D074416	8.15	1.29	0.31	0.91	0.36	0.33
17 mm	D074417	8.94	1.35	0.31	0.96	0.41	0.40
18 mm	D074418	9.41	1.48	0.34	1.05	0.44	0.42
19 mm	D074419	9.84	1.54	0.37	1.09	0.45	0.44
20 mm	D074420	10.20	1.60	0.37	1.13	0.47	0.51
21 mm	D074421	10.67	1.71	0.39	1.21	0.50	0.62
22 mm	D074422	11.61	1.80	0.40	1.29	0.53	0.66
23 mm	D074423	12.48	1.95	0.41	1.36	0.56	0.84
24 mm	D074424	12.48	1.95	0.41	1.36	0.56	0.84
25 mm	D074425	13.35	2.03	0.45	1.44	0.59	1.06
26 mm	D074426	13.35	2.03	0.45	1.44	0.59	1.06
27 mm	D074427	14.25	2.18	0.48	1.52	0.62	1.28
28 mm	D074428	15.51	2.30	0.50	1.67	0.65	1.63
29 mm	D074429	15.51	2.30	0.50	1.67	0.65	1.63
30 mm	D074430	15.51	2.30	0.50	1.67	0.65	1.63
32 mm	D074432	16.89	2.56	0.53	1.80	0.71	1.94

* Meets A.N.S.I. standards



Wrenches

8 Piece SAE Reversible Combination Ratcheting Wrench Set (15° Offset)

Part No. D076601

Set Content:

8 Ratcheting Wrenches: 5/16", 3/8", 7/16", 1/2", 9/16", 5/8", 11/16", 3/4"



Includes Canvas Roll.

12 Piece Metric Reversible Combination Ratcheting Wrench Set (15° Offset)

Part No. D076603

Set Content:

12 Ratcheting Wrenches: 8, 9, 10, 11, 12, 13, 14, 15, 16, 17, 18, 19mm



Includes Canvas Roll.

Wrenches

8 Piece SAE Stubby Flex Head Combination Ratcheting Wrench Set

Part No. D076607

Set Content:
8 Stubby Ratcheting Wrenches: 5/16", 3/8", 7/16", 1/2",
9/16", 5/8", 11/16", 3/4"



Includes Zipper Case.

12 Piece Metric Stubby Flex Head Combination Ratcheting Wrench Set

Part No. D076608

Set Content:
12 Stubby Ratcheting Wrenches: 8, 9, 10,
11, 12, 13, 14, 15, 16, 17, 18, 19mm



Includes Zipper Case.

Wrenches

SAE Reversible Combination Ratcheting Wrenches (15° Offset)

Size	Part No.	Overall Length inches	Head Width inches	Head Thickness inches	Box End Width inches	Box End Thickness inches	Net Weight (lbs)
5/16"	D076010	5.31	0.73	0.20	0.70	0.30	0.07
3/8"	D076012	6.22	0.85	0.23	0.83	0.32	0.12
7/16"	D076014	6.57	0.95	0.23	0.89	0.32	0.15
1/2"	D076016	7.05	1.06	0.26	1.02	0.35	0.21
9/16"	D076018	7.44	1.23	0.30	1.09	0.37	0.26
5/8"	D076020	8.46	1.37	0.31	1.26	0.39	0.35
11/16"	D076022	9.13	1.50	0.31	1.34	0.42	0.40
3/4"	D076024	9.72	1.62	0.35	1.38	0.44	0.55

* Meets A.N.S.I. standards



Metric Reversible Combination Ratcheting Wrenches (15° Offset)

Size	Part No.	Overall Length inches	Head Width inches	Head Thickness inches	Box End Width inches	Box End Thickness inches	Net Weight (lbs)
8 mm	D076108	5.31	0.73	0.20	0.70	0.30	0.07
9 mm	D076109	5.59	0.76	0.21	0.75	0.30	0.09
10 mm	D076110	6.22	0.85	0.23	0.83	0.32	0.12
11 mm	D076111	6.57	0.95	0.23	0.89	0.32	0.15
12 mm	D076112	6.81	1.04	0.24	0.94	0.35	0.17
13 mm	D076113	7.05	1.06	0.26	1.02	0.35	0.21
14 mm	D076114	7.44	1.23	0.30	1.09	0.37	0.26
15 mm	D076115	7.83	1.32	0.31	1.15	0.37	0.30
16 mm	D076116	8.46	1.35	0.31	1.25	0.39	0.35
17 mm	D076117	9.13	1.50	0.31	1.34	0.42	0.40
18 mm	D076118	9.37	1.56	0.33	1.34	0.43	0.44
19 mm	D076119	9.72	1.62	0.35	1.38	0.44	0.55

* Meets A.N.S.I. standards



SAE Stubby Flex Head Ratcheting Wrenches

Size	Part No.	Overall Length inches	Head Width inches	Head Thickness inches	Box End Width inches	Box End Thickness inches	Net Weight (lbs)
5/16"	D076210	3.66	0.66	0.19	0.67	0.29	0.05
3/8"	D076212	3.76	0.83	0.22	0.82	0.29	0.08
7/16"	D076214	4.13	0.98	0.24	0.93	0.34	0.12
1/2"	D076216	4.19	1.08	0.24	0.97	0.34	0.13
9/16"	D076218	4.53	1.14	0.28	1.05	0.34	0.16
5/8"	D076220	4.80	1.30	0.30	1.17	0.41	0.21
11/16"	D076222	4.94	1.37	0.32	1.24	0.41	0.25
3/4"	D076224	5.43	1.53	0.35	1.34	0.42	0.33

* Meets A.N.S.I. standards



Metric Stubby Flex Head Ratcheting Wrenches

Size	Part No.	Overall Length inches	Head Width inches	Head Thickness inches	Box End Width inches	Box End Thickness inches	Net Weight (lbs)
8 mm	D076308	3.66	0.66	0.19	0.67	0.29	0.05
9 mm	D076309	3.76	0.83	0.22	0.82	0.29	0.08
10 mm	D076310	3.76	0.83	0.22	0.82	0.29	0.08
11 mm	D076311	4.13	0.98	0.24	0.93	0.34	0.12
12 mm	D076312	4.13	0.98	0.24	0.93	0.34	0.12
13 mm	D076313	4.19	1.08	0.24	0.97	0.34	0.13
14 mm	D076314	4.53	1.14	0.28	1.05	0.34	0.16
15 mm	D076315	4.80	1.30	0.30	1.17	0.41	0.22
16 mm	D076316	4.80	1.30	0.30	1.17	0.41	0.22
17 mm	D076317	4.94	1.37	0.32	1.24	0.41	0.25
18 mm	D076318	5.43	1.53	0.35	1.34	0.42	0.33
19 mm	D076319	5.43	1.53	0.35	1.34	0.42	0.35

* Meets A.N.S.I. standards



Wrenches

5 Piece SAE Double Box End Reversible Ratcheting Wrench Set (Straight)

Part No. D081203

Set Content:

5 Ratcheting Wrenches (straight): 1/4" x 5/16",
3/8" x 7/16", 1/2" x 9/16", 5/8" x 11/16", 3/4" x 7/8"



Includes Canvas Roll.

5 Piece SAE Double Box End Reversible Ratcheting Wrench Set (25° Offset)

Part No. D081201

Set Content:

5 Ratcheting Wrenches (25° offset): 1/4" x 5/16",
3/8" x 7/16", 1/2" x 9/16", 5/8" x 11/16", 3/4" x 7/8"



Includes Canvas Roll.

Wrenches

5 Piece Metric Double Box End Reversible Ratcheting Wrench Set (Straight)

Part No. D081204

Set Content:
5 Ratcheting Wrenches (straight): 7mm x 8mm, 9mm x 10mm,
11mm x 12mm, 13mm x 14mm, 15mm x 17mm



Includes Canvas Roll.

5 Piece Metric Double Box End Reversible Ratcheting Wrench Set (25° Offset)

Part No. D081202

Set Content:
5 Ratcheting Wrenches (25° offset): 7mm x 8mm,
9mm x 10mm, 11mm x 12mm, 13mm x 14mm,
15mm x 17mm



Includes Canvas Roll.

Wrenches



SAE Double Box End Ratcheting Wrenches (Straight)

Size	Part No.	Overall Length (inches)	Net Weight (lbs)
1/4" x 5/16"	D081010	4.52	0.14
3/8" x 7/16"	D081011	5.60	0.18
1/2" x 9/16"	D081012	6.86	0.34
5/8" x 11/16"	D081013	8.11	0.54
3/4" x 7/8"	D081014	9.26	0.63



SAE Double Box End Ratcheting Wrenches (25° Offset)

Size	Part No.	Overall Length (inches)	Net Weight (lbs)
1/4" x 5/16"	D081000	4.33	0.14
3/8" x 7/16"	D081001	5.34	0.18
1/2" x 9/16"	D081002	6.71	0.34
5/8" x 11/16"	D081003	7.92	0.54
3/4" x 7/8"	D081004	9.05	0.63



Metric Double Box End Ratcheting Wrenches (Straight)

Size	Part No.	Overall Length (inches)	Net Weight (lbs)
7mm x 8mm	D081110	5.30	0.16
9mm x 10mm	D081111	5.60	0.18
11mm x 12mm	D081112	6.65	0.30
13mm x 14mm	D081113	6.86	0.34
15mm x 17mm	D081114	8.11	0.54



Metric Double Box End Ratcheting Wrenches (25° Offset)

Size	Part No.	Overall Length (inches)	Net Weight (lbs)
7mm x 8mm	D081100	5.03	0.16
9mm x 10mm	D081101	5.34	0.18
11mm x 12mm	D081102	6.36	0.30
13mm x 14mm	D081103	6.71	0.34
15mm x 17mm	D081104	7.92	0.54

Wrenches & Multipliers

Adjustable Wrenches

Size	Part No.	Max. Jaw Opening (inches)	Net Weight (lbs)
4"	D072004	0.6	0.12
6"	D072006	0.8	0.30
8"	D072008	1.0	0.52
10"	D072010	1.2	0.96
12"	D072012	1.4	1.43
15"	D072015	1.7	2.80
18"	D072018	2.1	4.11

* Meets A.N.S.I. standards



Aluminum Pipe Wrenches

Size	Part No.	Max. Jaw Opening (inches)	Net Weight (lbs)
14"	D080014	2	2.02
18"	D080018	2.5	3.35
24"	D080024	3	5.42
36"	D080036	5	10.40
48"	D080048	6	18.07

* Meets A.N.S.I. standards



Torque Multiplier (1/2" F-3/4" M)

Includes blow mold case.

Part No.	Input Drive	Output Drive	Maximum Input Torque ft. lb.	Maximum Input Torque (Nm)	Maximum Output Torque ft. lb.	Maximum Output Torque (Nm)	Torque Ratio	Length in.	Weight with case lbs.	Accuracy	Overload Protection	Anti Backlash
D086101	1/2" F	3/4" M	220	300	1100	1500	5:1	6.37	16.10	+/-5%	No	No



Torque Multiplier (1/2" F-1" M)

Includes blow mold case.

Part No.	Input Drive	Output Drive	Maximum Input Torque ft. lb.	Maximum Input Torque (Nm)	Maximum Output Torque ft. lb.	Maximum Output Torque (Nm)	Torque Ratio	Length in.	Weight with case lbs.	Accuracy	Overload Protection	Anti Backlash
D086102	1/2" F	1" M	126	173	3300	4500	26:1	9.25	34.66	+/-5%	No	Yes

Calibration Certificates

For ISO 9000 and QS 9000 customers, calibration certificates are available for an additional charge. To order tools with the third party calibration certificate simply add "C" to any of the part numbers seen on page 92.

Wrenches



Fixed Head Torque Wrenches

Part No.	Square Drive	Capacity		Increments		Head Style	No. of Teeth	Length
		Imperial	Nm	Imperial	Nm			
D086000	1/4"	30 - 150 (in-lb)	4-16.4	1 (in-lb)	0.11	Fixed	64	8"
D086001	3/8"	20-100 (ft-lb)	33.9-128.8	1 (ft-lb)	1.4	Fixed	32	17"
D086002	1/2"	30-250 (ft-lb)	48-332	1 (ft-lb)	1.4	Fixed	32	24"
D086003	3/4"	100-600 (ft-lb)	170-780	5 (ft-lb)	6.8	Fixed	24	49"

- Each torque wrench is factory calibrated within tolerance limits of +4% clockwise
- Factory certificate of calibration included
- Quick release mechanism makes socket removal easy
- Lock ring prevents accidental change of torque setting
- Durable aluminum handle features an easy to grip diamond knurl surface
- Dual scale SAE/Metric
- Blow molded plastic case for convenient storage



Flex Head Torque Wrenches

Part No.	Square Drive	Capacity		Increments		Head Style	No. of Teeth	Length
		Imperial	Nm	Imperial	Nm			
D086201	3/8"	10 - 80 (ft-lb)	17-105	0.5 (ft-lb)	0.7	Flexible	32	19"
D086202	1/2"	30-250 (ft-lb)	48-332	1 (ft-lb)	1.4	Flexible	32	25"

- Each torque wrench is factory calibrated within tolerance limits of +4% clockwise
- Factory certificate of calibration included
- Quick release mechanism makes socket removal easy
- Lock ring prevents accidental change of torque setting
- Durable aluminum handle features an easy to grip diamond knurl surface
- Dual scale SAE/Metric
- Blow molded plastic case for convenient storage



Ratcheting head flexes in both directions for improved access.



Easy to read laser marked scale readings.

Hex Keys



Rust-Protection

All hex keys feature a corrosion resistant surface.

Long-Lasting

During the manufacturing process the hex keys are specially heat-treated for increased durability.

Superior Manufacturing

Precision machined tip to avoid slippage and stripping of fasteners.

Hex Keys



13 Piece SAE Ball End Long Hex Key Set

Part No. D043201

Set Content:

3/64", 1/16", 5/64", 3/32", 7/64", 1/8", 9/64", 5/32", 3/16", 7/32", 1/4", 5/16", 3/8"



9 Piece Metric Ball End Long Hex Key Set

Part No. D043202

Set Content:

1.5, 2, 2.5, 3, 4, 5, 6, 8, 10 mm



13 Piece SAE Hex Key Set

Part No. D043203

Set Content:

3/64", 1/16", 5/64", 3/32", 7/64", 1/8", 9/64", 5/32", 3/16", 7/32", 1/4", 5/16", 3/8"



9 Piece Metric Hex Key Set

Part No. D043204

Set Content:

1.5, 2, 2.5, 3, 4, 5, 6, 8, 10 mm



9 Piece Torx® Hex Key Set

Part No. D043205

Set Content:

T10, T15, T20, T25, T27, T30, T40, T45, T50

Hex Keys

30 Piece SAE & Metric Hex Key Set

Part No. D043206

Set Content:

Regular Metric: 0.7, 0.9, 1.3, 1.5, 2, 2.5, 3, 4, 4.5, 5, 5.5, 6, 7, 8, 10mm

Long SAE: 0.028", 0.035", 0.05", 1/16", 5/64", 3/32", 7/64", 1/8", 9/64", 5/32", 3/16", 7/32", 1/4", 5/16", 3/8"



9 Piece SAE Folding Hex Key Set

Part No. D043207

Set Content:

5/64", 3/32", 7/64", 1/8", 9/64", 5/32", 3/16", 7/32", 1/4"



7 Piece Metric Folding Hex Key Set

Part No. D043208

Set Content:

1.5, 2, 2.5, 3, 4, 5, 6 mm



8 Piece Torx® Folding Hex Key Set

Part No. D043209

Set Content:

T8, T10, T15, T20, T25, T27, T30, T40



Hex Keys



8 Piece Metric Loop Handle Hex Key Set

Part No. D043320

Set Content:
2, 2.5, 3, 4, 5, 6, 8, 10mm



8 Piece SAE Loop Handle Hex Key Set

Part No. D043420

Set Content:
5/64", 3/32", 1/8", 5/32", 3/16", 1/4", 5/16", 3/8"

SAE Individual Loop Handle Hex Keys



Part No.	Size	Blade Length (inches)	Overall Length (inches)	Handle Width (inches)	Weight (lbs)
D043401	5/64"	9	9.75	3.15	0.02
D043402	3/32"	9	9.75	3.15	0.04
D043404	1/8"	9	9.75	3.15	0.08
D043406	5/32"	9	9.75	3.15	0.13
D043407	3/16"	9	10	3.74	0.17
D043409	1/4"	9	10	3.74	0.23
D043410	5/16"	9	10.5	4.13	0.35
D043411	3/8"	9	10.5	4.13	0.55

Metric Individual Loop Handle Hex Keys



Part No.	Size	Blade Length (inches)	Overall Length (inches)	Handle Width (inches)	Weight (lbs)
D043301	2mm	9	9.75	3.15	0.02
D043302	2.5mm	9	9.75	3.15	0.04
D043303	3mm	9	9.75	3.15	0.08
D043305	4mm	9	9.75	3.15	0.13
D043307	5mm	9	10	3.74	0.17
D043309	6mm	9	10	3.74	0.23
D043310	8mm	9	10.5	4.13	0.35
D043311	10mm	9	10.5	4.13	0.55

Screwdrivers



User-Friendly Design

Screwdrivers feature a cushion-grip handle for excellent user comfort and power transfer to the tip.

Improved Visibility

Bright orange handle colour allows for easy tool retrieval.

Professional Grade

All screwdrivers meet ANSI standards.

Screwdrivers

36 Piece Screwdriver & Bit Set

Part No. D062505



Set Content:

4 Phillips®: #0, #1, #2, #3

1 Phillips® Stubby: #2

5 Slotted: 5/32", 3/16", 1/4", 5/16", 3/8"

1 Slotted Stubby: 1/4"

4 Square Recess: #0, #1, #2, #3

2 Square Recess Stubby: #1, #2

1 Offset Phillips®: #1, #2

1 Offset Slotted: 3/16", 1/4"

1 Offset Square Recess: #1, #2

Circuit Tester (110V only)

Magnetic Bit Holder

Torx® Bits: T10, T15, T20, T25, T27, T30, T40

Hex Bits: 2, 2.5, 3, 4, 5, 6, 8 mm

Includes Blow Mold Case.

9 Piece Screwdriver Set-Comfort Handle

Part No. D062500



Set Content:

5 Slotted: 1/8", 5/32", 1/4", 5/16", 3/8"

2 Phillips®: #1, #2

2 Square Recess: #1, #2

Includes Plastic Tray.

13 Piece Ratcheting Screwdriver Set

Part No. D062508



Bit compartment conveniently stores in the handle.

Set Content:

Ratcheting screwdriver handle

Phillips® bits: 0, 1, 2, 3

Square bits: 0, 1, 2, 3

Slotted bits: 3.5, 4.5, 5.5, 6.5

21 Piece Screwdriver Set with Removable Bits

Part No. D062506



Set Content:

Comfort Grip Handle (1/4" Hex)

Screwdriver Bits (3" Length):

Torx®: T10, T15, T20, T25, T30

Square Recess: #0, #1, #2, #3

Slotted: 1/8", 5/32", 3/16"

Phillips®: #0, #1, #2, #3

Screwdriver Bits (2" Length):

Phillips® (2" length): #1, #2 (2), #3

Includes Canvas Pouch.

Screwdrivers



Phillips® Screwdrivers Comfort Handle

Part No.	Tip Size	Blade Length (inches)	Overall Length (inches)	Shank Size (inches)	Weight (lbs)
D062101	#1	2.95	6.89	0.20	0.13
D062102	#2	3.94	8.39	0.24	0.21
D062103	#3	5.91	10.67	0.31	0.35

* Meets A.N.S.I. standards



Phillips® Stubby Screwdrivers Comfort Handle

Part No.	Tip Size	Blade Length (inches)	Overall Length (inches)	Shank Size (inches)	Weight (lbs)
D062104	#1	1.50	3.80	0.20	0.09
D062105	#2	1.50	3.80	0.24	0.10

* Meets A.N.S.I. standards



Square Recess Screwdrivers Comfort Handle

Part No.	Tip Size	Blade Length (inches)	Overall Length (inches)	Shank Size (inches)	Weight (lbs)
D062201	#0	2.95	7.40	0.24	0.15
D062202	#1	3.94	8.39	0.24	0.21
D062203	#2	3.94	8.39	0.24	0.21
D062204	#3	4.92	9.37	0.24	0.23

* Meets A.N.S.I. standards



Square Recess Stubby Screwdrivers Comfort Handle

Part No.	Tip Size	Blade Length (inches)	Overall Length (inches)	Shank Size (inches)	Weight (lbs)
D062205	#1	1.50	3.80	0.24	0.09
D062206	#2	1.50	3.80	0.24	0.10

* Meets A.N.S.I. standards



Slotted Screwdrivers Comfort Handle

Part No.	Tip Size	Blade Length (inches)	Overall Length (inches)	Shank Size (inches)	Weight (lbs)
D062001	1/8"	2.95	6.02	0.12	0.07
D062002	5/32"	2.95	6.02	0.12	0.07
D062003	3/16"	3.94	7.87	0.16	0.12
D062004	1/4"	4.92	9.37	0.24	0.23
D062005	5/16"	5.91	10.67	0.31	0.34
D062006	3/8"	7.87	12.64	0.39	0.50

* Meets A.N.S.I. standards



Slotted Stubby Screwdrivers Comfort Handle

Part No.	Tip Size	Blade Length (inches)	Overall Length (inches)	Shank Size (inches)	Weight (lbs)
D062007	1/4"	1.50	3.80	0.24	0.10

* Meets A.N.S.I. standards

Screwdrivers

7 Piece SAE Nut Driver Set Acetate Handle

Part No. D062503

7 Piece Metric Nut Driver Set Acetate Handle

Part No. D062504



Set Content:

7 SAE Nut Drivers: 3/16", 1/4", 5/16", 11/32", 3/8", 7/16", 1/2"
Includes Plastic Tray.

Set Content:

7 Metric Nut Drivers: 5, 6, 7, 8, 9, 10, 11mm
Includes Plastic Tray.

SAE Nut Drivers-Acetate Handle

Part No.	Tip Size	Blade Length (inches)	Overall Length (inches)	Shank Size (inches)	Weight (lbs)
D062401	3/16"	3	6.75	0.24	0.16
D062402	1/4"	3	6.75	0.24	0.16
D062403	5/16"	3	6.75	0.31	0.19
D062404	11/32"	3	6.75	0.31	0.19
D062405	3/8"	3	6.75	0.31	0.20
D062406	7/16"	3	6.75	0.43	0.26
D062407	1/2"	3	6.75	0.43	0.27

* Meets A.N.S.I. standards



Metric Nut Drivers-Acetate Handle

Part No.	Tip Size	Blade Length (inches)	Overall Length (inches)	Shank Size (inches)	Weight (lbs)
D062408	5 mm	3	6.75	0.24	0.16
D062409	6 mm	3	6.75	0.24	0.16
D062410	7 mm	3	6.75	0.31	0.19
D062411	8 mm	3	6.75	0.31	0.19
D062412	9 mm	3	6.75	0.31	0.20
D062413	10 mm	3	6.75	0.43	0.26
D062414	11 mm	3	6.75	0.43	0.26

* Meets A.N.S.I. standards



Screwdrivers

7 Piece Precision Screwdriver Set

Part No. D062509



Set Content:

4 Slotted Screwdrivers: 1/8", 3/16", 1/4", 5/16"

3 Phillips® Screwdrivers: #000, #00, #0

Precision Screwdrivers - Slotted



Part No.	Tip Size	Blade Length (inches)	Overall Length (inches)	Shank Size (inches)	Weight (lbs)
D062801	1/8"	2.36	6.00	0.12	0.02
D062802	3/16"	2.36	6.00	0.12	0.03
D062803	1/4"	2.90	6.50	0.16	0.03
D062804	5/16"	2.90	6.50	0.24	0.03

Precision Screwdrivers - Phillips®



Part No.	Tip Size	Blade Length (inches)	Overall Length (inches)	Shank Size (inches)	Weight (lbs)
D062805	#000	2.36	6.00	0.08	0.03
D062806	#00	2.36	6.00	0.08	0.03
D062807	#0	2.90	6.50	0.10	0.03

Electrical Tools



Guaranteed Protection

All electrical tools with insulated handles are 1000 V certified to IEC 60900:2004.

User-Friendly Design

Comfort grip handles for easy operation and secure non-slip grip.

Peace of Mind

All electrical tools are backed by a lifetime warranty.

Screwdrivers

6 Piece Insulated Screwdriver Set

Part No. D062720



Set Content:
 2 Phillips®: #1, #2
 4 Slotted: 1/8", 5/32", 7/32", 1/4"
 Includes Plastic Tray.

Slotted Insulated Screwdrivers



Part No.	Tip Size	Blade Length (inches)	Overall Length (inches)	Shank Size (inches)	Weight (lbs)
D062701	1/8"	3.93	7.50	1.00	0.08
D062702	5/32"	3.93	8.00	1.18	0.12
D062703	7/32"	4.98	9.00	1.18	0.16
D062704	1/4"	5.93	10.50	1.37	0.25

* Meets A.N.S.I. standards

Phillips® Insulated Screwdrivers



Part No.	Tip Size	Blade Length (inches)	Overall Length (inches)	Shank Size (inches)	Weight (lbs)
D062705	No 1	3.20	7.25	1.17	0.13
D062706	No 2	4.00	8.50	1.39	0.21

* Meets A.N.S.I. standards

4 Piece Plier Set-Insulated Handles

Part No. D055210



Set Content:

8" Linesman Pliers, 8" Diagonal Cutting Pliers, 8" Long Nose Pliers, 10" Box Joint Water Pump Pliers
Includes Plastic Tray.

Linesman Pliers-Insulated Handles

Part No.	Overall Length	Jaw Length (inches)	Jaw Thickness (inches)	Weight (lbs)
D055100	7"	1.42	0.24	0.64
D055101	8"	1.65	0.30	0.90

* Meets A.N.S.I. standards



Diagonal Cutting Pliers-Insulated Handles

Part No.	Overall Length	Jaw Length (inches)	Jaw Thickness (inches)	Weight (lbs)
D055102	6"	0.79	0.43	0.45
D055103	8"	0.87	0.43	0.64

* Meets A.N.S.I. standards



Pliers



Long Nose Pliers-Insulated Handles

Part No.	Overall Length	Jaw Length (inches)	Jaw Thickness (inches)	Weight (lbs)
D055104	6"	2.09	0.12	0.37
D055105	8"	2.87	0.17	0.55

* Meets A.N.S.I. standards



Bent Nose Pliers-Insulated Handles

Part No.	Overall Length	Jaw Length (inches)	Jaw Thickness (inches)	Weight (lbs)
D055106	6"	1.69	0.12	0.37
D055107	8"	2.72	0.17	0.55

* Meets A.N.S.I. standards



Wire Stripping Pliers-Insulated Handles

Part No.	Overall Length	Jaw Length (inches)	Jaw Thickness (inches)	Weight (lbs)
D055108	6"	1.44	0.37	0.45

* Meets A.N.S.I. standards



Box Joint Water Pump Pliers-Insulated Handles

Part No.	Overall Length	Jaw Length (inches)	Jaw Thickness (inches)	Weight (lbs)
D055109	10"	1.44	0.39	0.93

* Meets A.N.S.I. standards

Wire Stripper/Cutter-Comfort Handle

Part No.	Overall Length	Jaw Length (inches)	Jaw Thickness (inches)	Weight (lbs)
D095001	8.25"	0.79	0.43	0.45

* Meets A.N.S.I. standards

- Strips 8-20 AWG solid wire and 10-22 AWG stranded wire
- Serrated jaws to pull, bend and loop wire



WARNING: Handles are not insulated and not designed to protect the user against electrical shock

Self-Adjusting Wire Stripper

Part No.	Overall Length	Jaw Length (inches)	Jaw Thickness (inches)	Weight (lbs)
D095002	8"	0.79	0.43	0.45

* Meets A.N.S.I. standards

- Quickly strips 10-24 AWG wire
- Handle mounted crimper and cutter



WARNING: Handles are not insulated and not designed to protect the user against electrical shock

Pliers



User-Friendly Design

Comfort grip handles for easy operation and secure non-slip grip.

Improved Visibility

Bright orange handle colour allows for easy tool retrieval.

Professional Grade

All pliers meet ANSI standards.



4 Piece Plier Set-Comfort Handles

Part No. D055200



Set Content:

7" Linesman Pliers, 6" Diagonal Cutting Pliers, 6" Long Nose Pliers, 10" Groove Joint Pliers
Includes Plastic Tray.

5 Piece Plier Set-Comfort Handles

Part No. D055201



Set Content:

8" Linesman Pliers, 7" Diagonal Cutting Pliers, 8" Long Nose Pliers, 8" Bent Nose Pliers, 8" Slip Joint Pliers
Includes Plastic Tray.

Pliers

3 Piece High Leverage Pliers Set

Part No. D055530



* Less effort required to make cuts versus ordinary pliers.

Set Content:

8" Linesman Pliers, 7" Diagonal Cutting Pliers, 8" Long Nose Pliers
Includes Plastic Tray.



Diagonal Cutting Pliers-Comfort Handles

Part No.	Overall Length	Jaw Length (inches)	Jaw Thickness (inches)	Weight (lbs)
D055038	6"	1.00	0.43	0.55
D055000	7"	1.00	0.43	0.60
D055500**	7"	1.00	0.43	0.75

* Meets A.N.S.I. standards

** High leverage design



Long Nose Pliers- Comfort Handles

Part No.	Overall Length	Jaw Length (inches)	Jaw Thickness (inches)	Weight (lbs)
D055001	6"	1.93	0.35	0.35
D055002	8"	2.99	0.37	0.50
D055502**	8"	2.60	0.37	0.60
D055003	11"	3.23	0.39	0.65

* Meets A.N.S.I. standards

** High leverage design



Bent Nose Pliers-Comfort Handles

Part No.	Overall Length	Jaw Length (inches)	Jaw Thickness (inches)	Weight (lbs)
D055004	6"	1.73	0.35	0.35
D055005	8"	2.85	0.37	0.50
D055006	11"	2.80	0.39	0.65

* Meets A.N.S.I. standards

Pliers & Bolt Cutters

Linesman Pliers-Comfort Handles

Part No.	Overall Length	Jaw Length (inches)	Jaw Thickness (inches)	Weight (lbs)
D055013	7"	1.50	0.39	0.60
D055014	8"	1.61	0.43	0.75
D055514**	8"	1.61	0.43	0.80

* Meets A.N.S.I. standards

** High leverage design



Slip Joint Pliers-Comfort Handles

Part No.	Overall Length	Jaw Length (inches)	Jaw Thickness (inches)	Weight (lbs)
D055007	6"	1.59	0.39	0.45
D055008	8"	2.05	0.41	0.60
D055009	10"	2.24	0.46	0.80

* Meets A.N.S.I. standards



Groove Joint Pliers-Comfort Handles

Part No.	Overall Length	Jaw Length (inches)	Jaw Thickness (inches)	Weight (lbs)
D055010	7 1/2"	1.69	0.39	0.60
D055011	9 1/2"	2.03	0.44	0.80
D055012	12"	2.50	0.47	1.00

* Meets A.N.S.I. standards



Bolt Cutters

Part No.	Overall Length	Cutting Capacity		Replacement Cutters
		Soft RC15	Medium RC31	
D091001	14"	9/32"	7/32"	D091001CUT
D091002	18"	5/16"	1/4"	D091002CUT
D091003	24"	3/8"	5/16"	D091003CUT
D091004	30"	1/2"	3/8"	D091004CUT
D091005	36"	11/16"	7/16"	D091005CUT

* Meets A.N.S.I. standards

Features:

- All steel tubular handles with rubber grips
- Drop forged alloy tool steel jaws with precision ground cutting edges for maximum wear resistance
- Toggle joint transforms 50 pounds of hand pressure to 4,000 pounds of pressure on cutting edges of jaws
- Screw-type adjustment realigns cutting edges



Pliers



Cable Cutter

Part No.	Overall Length	Weight (lbs)
D055036	10"	1.0

* Meets A.N.S.I. standards



End Cutter

Part No.	Overall Length	Weight (lbs)
D055037	8"	0.75

* Meets A.N.S.I. standards



Tin Snips

Part No.	Overall Length	Jaw Length (inches)	Weight (lbs)
D055031	7"	1.77	0.60
D055032	10"	1.77	0.80
D055033	12"	1.77	1.00



Compound Tin Snips-Straight

Part No.	Overall Length	Weight (lbs)
D055034	8"	1.00
D055035	11"	1.15

3 Piece Aviation Snips Set

Part No. D055205



Set Content:

Aviation Snip-Cuts Right, Aviation Snip-Cuts Straight, Aviation Snip-Cuts Left

Aviation Snips-Cuts Right

Part No.	Overall Length	Cut (inches)	Cuts	Grip Colour	Weight (lbs)
D055028	10"	1.70	Right	Green	0.84

* Meets A.N.S.I. standards



Aviation Snips-Cuts Straight

Part No.	Overall Length	Cut (inches)	Cuts	Grip Colour	Weight (lbs)
D055029	10"	1.70	Straight	Yellow	0.84

* Meets A.N.S.I. standards



Aviation Snips-Cuts Left

Part No.	Overall Length	Cut (inches)	Cuts	Grip Colour	Weight (lbs)
D055030	10"	1.70	Left	Red	0.84

* Meets A.N.S.I. standards



Pliers

5 Piece Locking Plier Set

Part No. D055316



Set Content:

- 10" locking plier - straight jaws
- 10" locking plier - curved jaws
- 7" locking plier - curved jaws with wire cutter
- 6" locking plier - long nose
- 5" locking plier - curved jaws with wire cutter



Includes Canvas Roll.



Locking Pliers - Curved Jaws

- The narrow, large opening curved jaws provide firm grip on all round shapes

Part No.	Overall Length	Jaw Opening (inches)	Weight (lbs)
D055304	7"	1.50	0.75
D055305	10"	1.88	1.17



Locking Pliers - Curved Jaws with Wire Cutter

- The functionality of regular curved jaws with added convenience of a wire cutter

Part No.	Overall Length	Jaw Opening (inches)	Weight (lbs)
D055301	5"	1.13	0.40
D055302	7"	1.50	0.75
D055303	10"	1.88	1.17



Locking Pliers - Straight Jaws

- Straight jaws provide firm grip on all flat shapes

Part No.	Overall Length	Jaw Opening (inches)	Weight (lbs)
D055306	7"	1.18	0.79
D055307	10"	1.88	1.21



Locking Pliers - Long Nose

- Long slim jaw design is helpful when holding, placing or extracting pieces in recessed spaces

Part No.	Overall Length	Jaw Opening (inches)	Weight (lbs)
D055312	6"	1.13	0.42
D055313	9"	2.25	0.82

Locking Clamps - Swivel Pads

- Two knurled swivel pads allow a non-slip parallel clamping on tapered surfaces without any damage to the piece

Part No.	Overall Length	Jaw Opening (inches)	Weight (lbs)
D055308	6"	2.00	0.57
D055309	11"	3.37	1.70



Locking Clamp

- Wide jaw profile provides great versatility in clamping large objects

Part No.	Overall Length	Jaw Opening (inches)	Weight (lbs)
D055310	11"	3.37	1.59



Locking Chain Clamps

- Flexible heavy duty chain adjusts quickly around any shape providing a secure hold even in hard to reach areas

Part No.	Overall Length	Jaw Opening (inches)	Weight (lbs)
D055311	9"	-	1.57
D055401	Replacement chain for D055311		



Locking Welding Clamp

- Holds two sections together with a firm grip

Part No.	Overall Length	Jaw Opening (inches)	Weight (lbs)
D055314	9"	2.00	1.48



Locking Wrench Tool

- Jaw design ensure secure grip onto three sides of the fastener

Part No.	Overall Length	Jaw Opening (inches)	Weight (lbs)
D055315	7"	-	1.28



Punches & Chisels



Complete Assortment

A variety of punches and chisels to meet any job requirements.

Durable Construction

Special heat treatment ensures improved durability.

Professional Grade

All punches and chisels meet ANSI standards.



8 Piece Chisel Set

Part No. D058201



Set Content:

8 Cold Chisels: 1/4", 5/16", 3/8", 1/2", 5/8", 3/4", 7/8", 1"

Includes Canvas Roll.

7 Piece Pin Punch Set

Part No. D058200



Set Content:

7 Pin Punches: 1/16", 3/32", 1/8", 5/32", 3/16", 1/4", 5/16"

Includes Canvas Roll.

Punches & Chisels

8 Piece Punch And Chisel Set

Part No. D058202



Set Content:

3 Cold Chisels: 1/2", 5/8", 3/4"

Centre Punch: 5/32"

Solid Punch: 3/16"

3 Pin Punches: 1/8", 3/16", 1/4"



Includes Canvas Roll.

16 Piece Punch And Chisel Set

Part No. D058203



Set Content:

5 Cold Chisels: 5/16", 1/2", 5/8", 3/4", 7/8"

3 Centre Punches: 1/8", 5/32", 1/4"

3 Solid Punches: 1/8", 3/16", 1/4"

2 Drift Punches: 3/16", 1/4"

3 Pin Punches: 1/8", 3/16", 1/4"



Includes Canvas Roll.

Automatic Centre Punch

Part No.	Overall Length (inches)	Weight (lbs)
D058030	4.90	0.12

* Meets A.N.S.I. standards

Pin Punches

Part No.	Pin Diameter (inches)	Body (inches)	Length (inches)	Weight (lbs)
D058001	1/16	1/4	4	0.05
D058002	3/32	1/4	4-1/4	0.05
D058003	1/8	5/16	4-3/4	0.05
D058004	5/32	5/16	5	0.10
D058005	3/16	5/16	5-1/4	0.10
D058006	1/4	3/8	5-3/4	0.15
D058007	5/16	7/16	6	0.20

* Meets A.N.S.I. standards

Drift Punches

Part No.	Pin Diameter (inches)	Body (inches)	Length (inches)	Weight (lbs)
D058008	1/8	5/16	8	0.15
D058009	5/32	3/8	9	0.20
D058010	3/16	5/16	10	0.20
D058011	1/4	3/8	10	0.25

* Meets A.N.S.I. standards

Solid Punches

Part No.	Pin Diameter (inches)	Body (inches)	Length (inches)	Weight (lbs)
D058012	1/16	3/8	5	0.10
D058013	1/8	5/16	5	0.10
D058014	5/32	3/8	5	0.15
D058015	3/16	3/8	5	0.15
D058016	1/4	1/2	5	0.25
D058017	5/16	1/2	6	0.30

* Meets A.N.S.I. standards

Centre Punches

Part No.	Pin Diameter (inches)	Body (inches)	Length (inches)	Weight (lbs)
D058018	5/64	1/4	3-1/2	0.05
D058019	1/8	5/16	4-1/2	0.10
D058020	5/32	5/16	5-1/2	0.10
D058021	1/4	3/8	6	0.20

* Meets A.N.S.I. standards

Cold Chisels

Part No.	Width of Cut (inches)	Body (inches)	Length (inches)	Weight (lbs)
D058101	1/4	1/4	5	0.05
D058102	5/16	1/4	5	0.05
D058103	3/8	5/16	5-1/2	0.10
D058104	1/2	7/16	6	0.25
D058105	5/8	1/2	6-1/2	0.35
D058106	3/4	5/8	7	0.60
D058107	7/8	5/8	8	0.70
D058108	1	3/4	8-1/2	1.05
D058109	1	3/4	10	1.25
D058110	1	3/4	12	1.50

* Meets A.N.S.I. standards



Clamping & Extracting



Complete Assortment

A variety of clamping and pulling tools to meet any job requirements.

Durable Construction

Special heat treatment process ensures years of continuous service.

Clamping & Extracting

C-Clamps

- Drop forged steel construction for maximum clamping power
- High strength ACME screw with black oxide plating for corrosion resistance

Part No.	Opening Capacity	Throat Depth	Spindle Diameter	Max. Clamping Power (lbs)	Weight (lbs)
D090001	0-2"	2 1/4"	15/32"	2700	1.4
D090002	0-3"	2 1/2"	45/64"	3000	2.5
D090003	0-4"	3 1/4"	45/64"	3700	3.6
D090004	0-6"	4 1/8"	45/64"	4500	4.6
D090005	0-8"	5"	45/64"	5200	7.9
D090006	0-10"	6"	15/16"	6000	11.8
D090007	0-12"	6 5/16"	15/16"	8000	14.5



Self-Adjusting Pullers

- Spring-loaded jaws for quick and easy set-up for different applications
- Two or three jaw design for added flexibility
- Solid Chrome-Vanadium forged construction for increased durability
- Heavy duty forcing screw with live center for strong even pulls

Part No.	Pulling Capacity	Maximum Reach	Maximum Spread	Weight (lbs)
D093001	2 tons	3 1/2"	4"	2.96
D093002	5 tons	5 1/4"	7"	6.25



Striking Tools



Complete Assortment

A variety of hammers and pry bars to meet any job requirements.

User-Friendly Design

Hammers are offered in a choice of Fiberglass and Hickory handles.

Professional Grade

All hammers and pry bars meet ANSI standards.

Hammers

Claw Hammer-Hickory Handle

Part No.	Head Weight	Head Diameter (inches)	Head Length (inches)	Overall Length (inches)
D041010	16 oz.	1.09	5.07	12.83

* Meets A.N.S.I. standards



Claw Hammer-Fiberglass Handle

Part No.	Head Weight	Head Diameter (inches)	Head Length (inches)	Overall Length (inches)
D041011	16 oz.	1.09	5.07	12.95

* Meets A.N.S.I. standards



Ball Pein Hammers-Hickory Handle

Part No.	Head Weight	Head Diameter (inches)	Head Length (inches)	Overall Length (inches)
D041025	8 oz.	0.92	3.22	11.70
D041027	16 oz.	1.19	3.94	13.65
D041028	24 oz.	1.38	4.64	15.44
D041029	32 oz.	1.50	4.91	15.60

* Meets A.N.S.I. standards



Ball Pein Hammers-Fiberglass Handle

Part No.	Head Weight	Head Diameter (inches)	Head Length (inches)	Overall Length (inches)
D041020	8 oz.	0.90	3.24	10.82
D041022	16 oz.	1.17	3.90	12.73
D041023	24 oz.	1.37	4.60	15.02
D041024	32 oz.	1.52	4.88	15.07

* Meets A.N.S.I. standards



Hammers



Sledge Hammers-Fiberglass Handle

Part No.	Head Weight	Head Diameter (inches)	Head Length (inches)	Overall Length (inches)
D041040	4 lbs.	1.83	5.46	16.19
D041041	6 lbs.	2.11	6.28	35.63
D041042	8 lbs.	2.30	6.86	35.49
D041043	10 lbs.	2.50	7.33	36.02
D041044	12 lbs.	2.61	7.84	36.13
D041045	16 lbs.	2.85	8.74	36.37



Club Hammers- Fiberglass Handle

Part No.	Head Weight	Head Diameter (inches)	Head Length (inches)	Overall Length (inches)
D041060	2 1/2 lbs.	1.79	3.74	10.49
D041061	4 lbs.	1.99	4.52	10.76

* Meets A.N.S.I. standards



Dead Blow Hammers-Fiberglass Handle

Part No.	Head Weight	Head Diameter (inches)	Head Length (inches)	Overall Length (inches)
D041065	1lb.	1.50	3.95	11.40
D041067	2 lbs.	2.00	4.33	13.40
D041069	3 lbs.	2.36	5.11	14.56

Hammers

Rubber Mallets-Hickory Handle

Part No.	Head Weight	Head Diameter (inches)	Head Length (inches)	Overall Length (inches)
D041000	1 lb.	2.15	3.71	11.70
D041001	1.5 lbs.	2.42	4.21	12.87



Soft Face Hammers-Hickory Handle

Part No.	Head Weight	Head Diameter (inches)	Head Length (inches)	Overall Length (inches)
D041151	8 oz.	1.10	3.15	10.55
D041154	14 oz.	1.34	3.94	11.62



Replacement Tips For Soft Face Hammers

Part No.	Description
D041152	Tip For 8 Oz Soft Face Hammer (D041151)
D041155	Tip For 14 Oz Soft Face Hammer (D041154)

Bricklayer's Hammer-Hickory Handle

Part No.	Head Weight	Head Diameter (inches)	Head Length (inches)	Overall Length (inches)
D041130	24 oz.	1.33	8.15	11.69

* Meets A.N.S.I. standards



Framing Hammer Milled Face-Hickory Handle

Part No.	Head Weight	Head Diameter (inches)	Head Length (inches)	Overall Length (inches)
D041110	25 oz.	1.58	6.21	17.65

* Meets A.N.S.I. standards



Pry Bars



Pinch Bars

Part No.	Length (inches)	Shank Size (inches)	Width of Cut (inches)	Weight (lbs)
D056016	16	0.63	0.98	1.30
D056020	20	0.63	0.98	1.68
D056024	24	0.75	1.17	2.94
D056030	30	0.75	1.17	3.95
D056036	36	0.75	1.17	4.68



Wonder Bars (Nail Puller)

Part No.	Length (inches)	Width of Cut (inches)	Weight (lbs)
D056113	13	1.85	1.19
D056118	18	1.85	1.56



Crow Bars-Heavy Duty

Part No.	Length (inches)	Width of Cut (inches)	Weight (lbs)
D056214	54	1.14	14.02
D056218	60	1.26	18.19



Wrecking Bars

Part No.	Length (inches)	Shank Size (inches)	Width of Cut (inches)	Weight (lbs)
D056312	12	0.55	1.06	0.83
D056318	18	0.63	1.18	1.93
D056324	24	0.75	1.42	3.25
D056330	30	0.75	1.42	3.95
D056336	36	0.75	1.42	4.68
D056342	42	0.75	1.42	5.51

Flat Files

• For fast removal of metal

Part No.	Length	Cut	Weight (lbs)
D094001	8"	Bastard	0.50
D094002	10"	Bastard	0.81
D094003	12"	Bastard	1.20



Round Files

• For sharpening round openings or concave surfaces

Part No.	Length	Cut	Weight (lbs)
D094301	8"	Bastard	0.34
D094302	10"	Bastard	0.48
D094303	12"	Bastard	1.12



Half Round Files

• For concave, convex or flat surfaces

Part No.	Length	Cut	Weight (lbs)
D094101	8"	Bastard	0.48
D094102	10"	Bastard	0.73
D094103	12"	Bastard	0.76



Mill Files

• For sharpening mill or circular saws

Part No.	Length	Cut	Weight (lbs)
D094201	8"	Bastard	0.40
D094202	10"	Bastard	0.60
D094203	12"	Bastard	0.87
D094211	8"	Smooth	0.43
D094212	10"	Smooth	0.59
D094213	12"	Smooth	0.87



Replacement Parts



Ratchet Repair Kits

Part No.	Description
D001208	Repair Kit Assembly for D001301
D001305	Repair Kit Assembly for D001302
D001306RK	Repair Kit Assembly for D001306
D005208	Repair Kit Assembly for D005301
D005305	Repair Kit Assembly for D005302
D005306RK	Repair Kit Assembly for D005306
D005307RK	Repair Kit Assembly for D005307
D005308RK	Repair Kit Assembly for D005308
D012208	Repair Kit Assembly for D012301
D012305	Repair Kit Assembly for D012302
D012308RK	Repair Kit Assembly for D012308
D019300	Repair Kit Assembly for D019301
D024301RK	Repair Kit Assembly for D024301



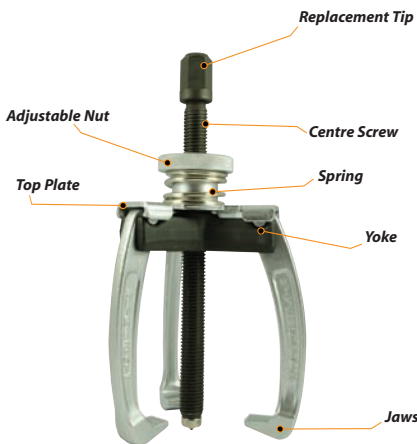
Flex Handle Repair Kits

Part No.	Description
D001801	Repair Kit Assembly for D001800
D005801	Repair Kit Assembly for D005800
D012801	Repair Kit Assembly for D012800
D012803RK	Repair Kit Assembly for D012803



Hammer Repair Kits

Part No.	Description
D041153	Handle for D041151 Soft Face Hammer
D041156	Handle for D041154 Soft Face Hammer



Puller Repair Kits

Part No.	Description
D093001RT	Replacement Tip for D093001
D093101	Top Plate for D093001
D093102	Centre Screw for D093001
D093103	Adjustable Nut for D093001
D093104	Yoke for D093001
D093105	Jaws for D093001
D093106	Spring for D093001
D093002RT	Replacement Tip for D093002
D093107	Top Plate for D093002
D093108	Centre Screw for D093002
D093109	Adjustable Nut for D093002
D093110	Yoke for D093002
D093111	Jaws for D093002
D093112	Spring for D093002



Wrench Pipe Repair Kits

Part No.	Description
D080014HJ	Hook Jaw - D080014 Pipe Wrench
D080014HP	Pin - D080014 Pipe Wrench
D080014KN	Knurl - D080014 Pipe Wrench
D080018HJ	Hook Jaw - D080018 Pipe Wrench
D080018HP	Pin - D080018 Pipe Wrench
D080018KN	Knurl - D080018 Pipe Wrench
D080024HJ	Hook Jaw - D080024 Pipe Wrench
D080024HP	Pin - D080024 Pipe Wrench
D080024KN	Knurl - D080024 Pipe Wrench
D080036HJ	Hook Jaw - D080036 Pipe Wrench
D080036HP	Pin - D080036 Pipe Wrench
D080036KN	Knurl - D080036 Pipe Wrench
D080048HJ	Hook Jaw - D080048 Pipe Wrench
D080048HP	Pin - D080048 Pipe Wrench
D080048KN	Knurl - D080048 Pipe Wrench

Alphabetical Index

A

- Adapters**
 - 3/8" Drive 56
 - 1/2" Drive 78
- Adapters Impact**
 - 3/8" Drive 63
 - 1/2" Drive 63
 - 3/4" Drive 63

B

- Bolt Cutters**
 - 129

C

- Chisels**
 - Cold Chisel 137
 - Sets 135-136
- C-Clamps**
 - 139

E

- Electrical Tools**
 - 122-125
- Extensions**
 - 1/4" Drive 39
 - 3/8" Drive 56
 - 1/2" Drive 78
 - 3/4" Drive 89
 - 1" Drive 95
- Extensions Impact**
 - 3/8" Drive 63
 - 1/2" Drive 63
 - 3/4" Drive 63

F

- Files** 145
- Flex Handles**
 - 1/4" Drive 39
 - 3/8" Drive 56
 - 1/2" Drive 78
 - 3/4" Drive 89
 - 1" Drive 95
- Foam Organizer Sets**
 - 5-20

H

- Hand Driver**
 - 1/4" Drive 39
- Hammers**
 - Ball Pein 141
 - Bricklayer 143
 - Claw 141
 - Club 142
 - Dead Blow 142
 - Framing 143
 - Rubber Mallet ... 143
 - Sledge 142
 - Soft Face 143
- Hex Keys**
 - 112-114

I

- Insulated**
 - Screwdrivers 122
 - Pliers 123-124

M

- Master Sets**
 - 5-24

N

- Nut Drivers**
 - 119

P

- Pliers**
 - Aviation Snips ... 131
 - Bent Nose 128
 - Cable Cutter 130
 - Diagonal 128
 - End Cutter 130
 - Groove Joint ... 129
 - Linesman 129
 - Locking 132-133
 - Long Nose 128
 - Sets 127-128
 - Slip Joint 129
 - Tin Snips 130
 - Wire Strippers ... 125
- Pry Bars**
 - Crow Bar 144
 - Pinch Bar 144
 - Wonder Bar 144
 - Wrecking Bar ... 144

- Pullers**
 - 139
- Punches**
 - Centre 137
 - Drift 137
 - Pin 137
 - Sets 135-136
 - Solid 137

R

- Ratchets**
 - 1/4" Drive 38
 - 3/8" Drive 55
 - 1/2" Drive 78
 - 3/4" Drive 89
 - 1" Drive 95

S

- Screwdrivers**
 - Phillips® 118
 - Precision 120
 - Sets 116-117
 - Slotted 118
 - Square Recess... 118
- Sockets**
 - Hex Head
 - 3/8" Drive 59-60
 - 1/2" Drive 81-82

S

- Sockets (cont'd)**
 - Sets
 - 3/8" Drive 46-49
 - 1/2" Drive 72-74
 - Phillips®
 - 3/8" Drive 61
 - Slotted
 - 3/8" Drive 61
 - Torx®
 - 1/4" Drive 41
 - 3/8" Drive 61
 - 1/2" Drive 82
 - Chrome
 - 1/4" Drive 33-41
 - 3/8" Drive 42-67
 - 1/2" Drive 68-87
 - 3/4" Drive 88-93
 - 1" Drive 94
 - Crowfoot 62
 - Sets 50
 - Impact
 - 3/8" Drive 64-67
 - 1/2" Drive 83-87
 - 3/4" Drive 91-93
 - Spark Plug
 - 3/8" Drive 56

T

- T-Handles & Heads**
 - 1/4" Drive 39
 - 3/8" Drive 56
 - 1/2" Drive 78
 - 3/4" Drive 89
 - 1" Drive 95

- Tool Storage**
 - 26-31

- Torque Multipliers**
 - 109

U

- U-Joints**
 - 1/4" Drive 39
 - 3/8" Drive 56
 - 1/2" Drive 78

- U-Joints Impact**
 - 3/8" Drive 63
 - 1/2" Drive 63
 - 3/4" Drive 63

W

- Wrenches**
 - Adjustable 109
 - Combination ... 97-102
 - Pipe 109
 - Ratcheting ... 103-108
 - Torque 110

Numerical Index

D00100239	D00330340	D00540156	D00674061
D00100439	D00330440	D00540256	D00674561
D00100639	D00330640	D00550056	D00675061
D00110139	D00330840	D00560156	D00675561
D00120139	D00330940	D00570156	D00690460
D001208146	D00331040	D00570256	D00690560
D00130138	D00331140	D00571063	D00690660
D00130238	D00331240	D00580056	D00690760
D001305146	D00331440	D005801146	D00690860
D00130638	D00331640	D00600460	D00690960
D001306RK146	D00331840	D00600560	D00691060
D00130738	D00340440	D00600660	D00695259
D00150039	D00340640	D00600760	D00695359
D00160139	D00340840	D00600860	D00695459
D00180039	D00340940	D00600960	D00695659
D001801146	D00341040	D00601060	D00695859
D00230841	D00341140	D00605259	D00696059
D00230941	D00341240	D00605359	D00696259
D00231041	D00341440	D00605459	D00700867
D00231541	D00341640	D00605659	D00700967
D00232041	D00341840	D00605859	D00701067
D00232541	D00350440	D00606059	D00701167
D00232741	D00350640	D00606259	D00701267
D00233041	D00350840	D00610561	D00701367
D00300441	D00350940	D00610661	D00701467
D00300541	D00351040	D00610761	D00701567
D00300641	D00351140	D00610861	D00701667
D00300741	D00351240	D00620161	D00701767
D00300841	D00351440	D00620261	D00701867
D00300941	D00351640	D00620361	D00701967
D00301041	D00351840	D00620461	D00720867
D00301141	D00400033	D00631561	D00720967
D00301241	D00400133	D00632061	D00721067
D00301341	D00400234	D00632561	D00721167
D00301441	D00400335	D00632761	D00721267
D00301541	D00400436	D00633061	D00721367
D00304541	D00400537	D00634061	D00721467
D00305541	D00400637	D00634561	D00721567
D00310441	D00400734	D00635061	D00721667
D00310541	D00400835	D00635561	D00721767
D00310641	D00400936	D00640460	D00721867
D00310741	D00500356	D00640560	D00721967
D00310841	D00500656	D00640660	D00731066
D00310941	D00501056	D00640760	D00731266
D00311041	D00502356	D00640860	D00731466
D00311141	D00502656	D00640960	D00731666
D00311241	D00503056	D00641060	D00731866
D00320441	D00505363	D00645259	D00732066
D00320541	D00505663	D00645359	D00732266
D00320641	D005208146	D00645459	D00732466
D00320741	D00530155	D00645659	D00751066
D00320841	D00530255	D00645859	D00751266
D00320941	D005305146	D00646059	D00751466
D00321041	D00530655	D00646259	D00751666
D00321141	D005306RK146	D00671561	D00751866
D00321241	D00530755	D00672061	D00752066
D00321341	D005307RK146	D00672561	D00752266
D00321441	D00530855	D00672761	D00752466
D00325541	D005308RK146	D00673061	D00800658

Numerical Index

D00800758	D00852857	D00941457	D01002265
D00800858	D00853057	D00941657	D01002365
D00800958	D00853257	D00941857	D01002447
D00801058	D00861262	D00942057	D01002548
D00801158	D00861462	D00942257	D01002651
D00801258	D00861662	D00942457	D01002751
D00801358	D00861862	D00942657	D01002850
D00801458	D00862062	D00942857	D01002950
D00801558	D00862262	D00943057	D01200578
D00801658	D00862462	D00943257	D01201078
D00801758	D00864262	D00960857	D01202378
D00801858	D00864462	D00961057	D01202578
D00801958	D00864662	D00961257	D01203078
D00802058	D00864862	D00961457	D01205563
D00802158	D00865062	D00961657	D01206063
D00802258	D00865262	D00961857	D012208146
D00802358	D00865462	D00962057	D01230178
D00802458	D00866063	D00962257	D01230278
D00820658	D00871062	D00962457	D012305146
D00820758	D00871162	D00962657	D01230878
D00820858	D00871262	D00962857	D012308RK146
D00820958	D00871362	D00963057	D01250078
D00821058	D00871462	D00963257	D01260078
D00821158	D00871562	D00970658	D01270178
D00821258	D00871662	D00970758	D01271063
D00821358	D00871762	D00970858	D01271163
D00821458	D00871862	D00970958	D01280078
D00821558	D00871962	D00971058	D012801146
D00821658	D00876062	D00971158	D01280378
D00821758	D00876162	D00971258	D012803RK146
D00821858	D00876262	D00971358	D01300681
D00821958	D00876362	D00971458	D01300881
D00822058	D00876462	D00971558	D01301081
D00822158	D00876562	D00971658	D01301281
D00822258	D00876662	D00971758	D01301481
D00822358	D00876762	D00971858	D01301781
D00830857	D00876862	D00971958	D01301981
D00831057	D00876962	D01000042	D01305881
D00831257	D00910658	D01000142	D01306081
D00831457	D00910758	D01000243	D01306281
D00831657	D00910858	D01000343	D01306481
D00831857	D00910958	D01000444	D01306681
D00832057	D00911058	D01000544	D01306881
D00832257	D00911158	D01000645	D01307081
D00832457	D00911258	D01000745	D01307481
D00832657	D00911358	D01000852	D01332082
D00832857	D00911458	D01000952	D01332582
D00833057	D00911558	D01001053	D01332782
D00833257	D00911658	D01001153	D01333082
D00850857	D00911758	D01001254	D01334082
D00851057	D00911858	D01001354	D01334582
D00851257	D00911958	D01001446	D01335082
D00851457	D00912058	D01001546	D01340682
D00851657	D00912158	D01001647	D01340882
D00851857	D00912258	D01001748	D01341082
D00852057	D00912358	D01001849	D01341282
D00852257	D00940857	D01001949	D01341482
D00852457	D00941057	D01002064	D01341782
D00852657	D00941257	D01002164	D01341982

Numerical Index

D01345881	D01423087	D01513080	D01601780
D01346081	D01423687	D01513280	D01601880
D01346281	D01431286	D01541279	D01601980
D01346481	D01431486	D01541479	D01602080
D01346681	D01431686	D01541679	D01602180
D01346881	D01431886	D01541879	D01602280
D01347081	D01432086	D01542079	D01602380
D01347481	D01432286	D01542279	D01602480
D01372082	D01432486	D01542479	D01602580
D01372582	D01432686	D01542679	D01602680
D01372782	D01432886	D01542879	D01602780
D01373082	D01433086	D01543079	D01602880
D01374082	D01433286	D01543279	D01602980
D01374582	D01433486	D01543479	D01603080
D01375082	D01433686	D01543679	D01603180
D01400887	D01433886	D01543879	D01603280
D01400987	D01434086	D01544079	D01621080
D01401087	D01434286	D01544279	D01621180
D01401187	D01434486	D01561279	D01621280
D01401287	D01434686	D01561479	D01621380
D01401387	D01434886	D01561679	D01621480
D01401487	D01451286	D01561879	D01621580
D01401587	D01451486	D01562079	D01621680
D01401687	D01451686	D01562279	D01621780
D01401787	D01451886	D01562479	D01621880
D01401887	D01452086	D01562679	D01621980
D01401987	D01452286	D01562879	D01622080
D01402087	D01452486	D01563079	D01622180
D01402187	D01452686	D01563279	D01622280
D01402287	D01452886	D01563479	D01622380
D01402387	D01453086	D01563679	D01622480
D01402487	D01453286	D01563879	D01622580
D01402587	D01453486	D01564079	D01622680
D01402687	D01453686	D01564279	D01622780
D01402787	D01453886	D01571080	D01622880
D01402887	D01454086	D01571180	D01622980
D01402987	D01454286	D01571280	D01623080
D01403087	D01454486	D01571380	D01623180
D01403187	D01454686	D01571480	D01623280
D01403287	D01454886	D01571580	D01631279
D01403687	D01511080	D01571680	D01631479
D01420887	D01511180	D01571780	D01631679
D01420987	D01511280	D01571880	D01631879
D01421087	D01511380	D01571980	D01632079
D01421187	D01511480	D01572080	D01632279
D01421287	D01511580	D01572180	D01632479
D01421387	D01511680	D01572280	D01632679
D01421487	D01511780	D01572380	D01632879
D01421587	D01511880	D01572480	D01633079
D01421687	D01511980	D01572580	D01633279
D01421787	D01512080	D01572680	D01633479
D01421887	D01512180	D01572780	D01633679
D01421987	D01512280	D01601080	D01633879
D01422087	D01512380	D01601180	D01634079
D01422187	D01512480	D01601280	D01634279
D01422287	D01512580	D01601380	D01651279
D01422387	D01512680	D01601480	D01651479
D01422487	D01512780	D01601580	D01651679
D01422787	D01512880	D01601680	D01651879

Numerical Index

D01652079	D02004093	D02100191	D041029141
D01652279	D02004193	D02211990	D041040142
D01652479	D02004293	D02212090	D041041142
D01652679	D02004393	D02212190	D041042142
D01652879	D02004693	D02212290	D041043142
D01653079	D02005093	D02212390	D041044142
D01653279	D02021993	D02212490	D041045142
D01653479	D02022793	D02212590	D041060142
D01653679	D02023093	D02212690	D041061142
D01653879	D02023293	D02212790	D041065142
D01654079	D02023393	D02212890	D041067142
D01654279	D02023593	D02212990	D041069142
D01666063	D02023693	D02213090	D041110143
D01800068	D02023893	D02213290	D041130143
D01800168	D02024193	D02213590	D041151143
D01800269	D02024393	D02213690	D041152143
D01800369	D02032492	D02213890	D041153146
D01800470	D02032692	D02214190	D041154143
D01800570	D02032892	D02214690	D041155143
D01800671	D02033092	D02215090	D041156146
D01800771	D02033292	D02242890	D043201112
D01800875	D02033492	D02243090	D043202112
D01800975	D02033692	D02243290	D043203112
D01801077	D02033892	D02243490	D043204112
D01801177	D02034092	D02243690	D043205112
D01801276	D02034292	D02243890	D043206113
D01801376	D02034492	D02244090	D043207113
D01801473	D02034692	D02244290	D043208113
D01801573	D02034892	D02244490	D043209113
D01801674	D02035092	D02244690	D043301114
D01801774	D02035292	D02244890	D043302114
D01801872	D02035492	D02245090	D043303114
D01801972	D02035692	D02245290	D043305114
D01802083	D02035892	D02245490	D043307114
D01802184	D02036092	D02245690	D043309114
D01802285	D02036292	D02245890	D043310114
D01802385	D02036492	D02246090	D043311114
D01802483	D02036692	D02246490	D043320114
D01802684	D02036892	D02266063	D043401114
D01900489	D02037092	D02300088	D043402114
D01900889	D02037292	D02300188	D043404114
D01901689	D02037492	D02400895	D043406114
D01905663	D02037692	D02401595	D043407114
D01906063	D02052492	D02430195	D043409114
D019300146	D02052692	D024301RK146	D043410114
D01930189	D02052892	D02450095	D043411114
D01950189	D02053092	D02700194	D043420114
D01971063	D02053292	D02780095	D055000128
D01980589	D02053492	D041000143	D055001128
D02002493	D02053692	D041001143	D055002128
D02002793	D02053892	D041010141	D055003128
D02002893	D02054092	D041011141	D055004128
D02003093	D02054292	D041020141	D055005128
D02003293	D02054492	D041022141	D055006128
D02003393	D02054692	D041023141	D055007129
D02003493	D02054892	D041024141	D055008129
D02003593	D02055092	D041025141	D055009129
D02003693	D02055292	D041027141	D055010129
D02003893	D02100091	D041028141	D055011129

Numerical Index

D055012129	D056318144	D062401119	D06957128
D055013129	D056324144	D062402119	D06957226,29
D055014129	D056330144	D062403119	D06957328
D055028131	D056336144	D062404119	D06957427
D055029131	D056342144	D062405119	D06957530
D055030131	D058001137	D062406119	D06958026
D055031130	D058002137	D062407119	D06958127
D055032130	D058003137	D062408119	D06958228
D055033130	D058004137	D062409119	D06958329
D055034130	D058005137	D062410119	D06960126
D055035130	D058006137	D062411119	D06960227
D055036130	D058007137	D062412119	D06960330
D055037130	D058008137	D062413119	D06960526
D055038128	D058009137	D062414119	D06960627
D055100123	D058010137	D062500116	D06960729
D055101123	D058011137	D062503119	D06965030
D055102123	D058012137	D062504119	D06965130
D055103123	D058013137	D062505116	D072004109
D055104124	D058014137	D062506117	D072006109
D055105124	D058015137	D062508117	D072008109
D055106124	D058016137	D062509120	D072010109
D055107124	D058017137	D062701122	D072012109
D055108124	D058018137	D062702122	D072015109
D055109124	D058019137	D062703122	D072018109
D055200127	D058020137	D062704122	D074008101
D055201127	D058021137	D062705122	D074010101
D055205131	D058030137	D062706122	D074012101
D055210123	D058101137	D062720122	D074014101
D055301132	D058102137	D062801120	D074016101
D055302132	D058103137	D062802120	D074018101
D055303132	D058104137	D062803120	D074020101
D055304132	D058105137	D062804120	D074022101
D055305132	D058106137	D062805120	D074024101
D055306132	D058107137	D062806120	D074026101
D055307132	D058108137	D062807120	D074028101
D055308133	D058109137	D06900130	D074030101
D055309133	D058110137	D06900230	D074032101
D055310133	D058200135	D06910129	D074034101
D055311133	D058201135	D06910230	D074036101
D055312312	D058202136	D06910329	D074040101
D055314133	D058203136	D06920126	D074106101
D055315133	D062001118	D06920228	D074107101
D055316132	D062002118	D06920326	D074108101
D055401133	D062003118	D06920428	D074109101
D055500128	D062004118	D06920527	D074110101
D055502128	D062005118	D06920626	D074111101
D055514129	D062006118	D06920727	D074112101
D055530128	D062007118	D06920828	D074113101
D056016144	D062101118	D06920929	D074114101
D056020144	D062102118	D06949830	D074115101
D056024144	D062103118	D06949930	D074116101
D056030144	D062104118	D06950026-28	D074117101
D056036144	D062105118	D06950126-29	D074118101
D056113144	D062201118	D06950526	D074119101
D056118144	D062202118	D06950628	D074120101
D056214144	D062203118	D06950726	D074121101
D056218144	D062204118	D06950828	D074122101
D056312144	D062205118	D06950927	D074123101
	D062206118	D06957026,27	D074124101

Numerical Index

D074125101	D074420102	D080014KN146	D091004129
D074126101	D074421102	D080018109	D091005129
D074127101	D074422102	D080018HJ146	D091001CUT129
D074128101	D074423102	D080018HP146	D091002CUT129
D074129101	D074424102	D080018KN146	D091003CUT129
D074130101	D074425102	D080024109	D091004CUT129
D074132101	D074426102	D080024HJ146	D091005CUT129
D07420197	D074427102	D080024HP146	D093001139
D07420297	D074428102	D080024KN146	D093001RT146
D07420399	D074429102	D080036109	D093002139
D07420499	D074430102	D080036HJ146	D093002RT146
D07422198	D074432102	D080036HP146	D093101146
D07422298	D076010105	D080036KN146	D093102146
D074223100	D076012105	D080048109	D093103146
D074224100	D076014105	D080048HJ146	D093104146
D074308102	D076016105	D080048HP146	D093105146
D074310102	D076018105	D080048KN146	D093106146
D074312102	D076020105	D081000108	D093107146
D074314102	D076022105	D081001108	D093108146
D074316102	D076024105	D081002108	D093109146
D074318102	D076108105	D081003108	D093110146
D074320102	D076109105	D081004108	D093111146
D074322102	D076110105	D081010108	D093112146
D074324102	D076111105	D081011108	D094001145
D074326102	D076112105	D081012108	D094002145
D074328102	D076113105	D081013108	D094003145
D074330102	D076114105	D081014108	D094101145
D074332102	D076115105	D081100108	D094102145
D074334102	D076116105	D081101108	D094103145
D074336102	D076117105	D081102108	D094201145
D074340102	D076118105	D081103108	D094202145
D074342102	D076119105	D081104108	D094203145
D074344102	D076210105	D081110108	D094211145
D074346102	D076212105	D081111108	D094212145
D074348102	D076214105	D081112108	D094213145
D074350102	D076216105	D081113108	D094301145
D074352102	D076218105	D081114108	D094302145
D074354102	D076220105	D081201106	D094303145
D074356102	D076222105	D081202107	D095001125
D074358102	D076224105	D081203106	D095002125
D074360102	D076308105	D081204107	D09600121,22
D074362102	D076309105	D086000110	D096001-FO6,7
D074364102	D076310105	D086001110	D096001-FT19
D074366102	D076311105	D086002110	D096001-FT1T9
D074368102	D076312105	D086003110	D096001-FT29
D074406102	D076313105	D086101109	D096001-FT2T9
D074407102	D076314105	D086102109	D096001-FT310
D074408102	D076315105	D086201110	D096001-FT3T10
D074409102	D076316105	D086202110	D096001-FT410
D074410102	D076317105	D090001139	D096001-FT4T10
D074411102	D076318105	D090002139	D096001-FT511
D074412102	D076319105	D090003139	D096001-FT5T11
D074413102	D076601103	D090004139	D096001-FT614
D074414102	D076603103	D090005139	D096001-FT6T14
D074415102	D076607104	D090006139	D096001-FT714
D074416102	D076608104	D090007139	D096001-FT7T14
D074417102	D080014109	D091001129	D096001-FT815
D074418102	D080014HJ146	D091002129	D096001-FT8T15
D074419102	D080014HP146	D091003129	D096001-FT915

Numerical

Numerical Index

D096001-FT9T15
D09600221,23
D09600321,24
D096004-FO6,8
D096004-FT6
D096004-FT111
D096004-FT1T11
D096004-FT212
D096004-FT2T12
D096004-FT312
D096004-FT3T12
D096004-FT413
D096004-FT4T13
D096004-FT513
D096004-FT5T13
D09944694
D09944894
D09945094
D09945294
D09945494
D09945694
D09945894
D09946094
D09946494
D09946694
D09946894
D09947294
D09947694
D09948094
D09948294
D09948494
D09948894
D10500116
D10500216
D10510117
D105101-FT17
D10510217
D105102-FT17
D10510318
D105103-FT18
D10510418
D105104-FT18
D10510519
D105105-FT19
D10510619
D105106-FT19
D10510720
D105107-FT20
D10510820
D105108-FT20
D10520131
D10520231

Visit our website for new product updates and exciting sales promotions.

[Home](#)[About](#)[Products](#)[Promotions](#)[Where to buy](#)[Contact](#)

Sign-up To Receive Email Newsletters

[SIGN UP](#)

The Advanced Dynamic Master Set Bundle

KEEP YOUR TOOLS ORGANIZED.
WORK MORE EFFICIENTLY

Find the tool you need fast. Identify missing tools.
Keep tools from rolling and sliding inside drawer.
Protect your tools from damage.

[LEARN MORE](#)

WRENCHES



TOOL STORAGE



PULLERS



HAND SOCKETS



SCREWDRIVERS

www.dynamictools.ca

Available at:

www.dynamictools.ca

Tel: 1-800-567-0518

Fax: 1-800-264-6977

E-mail: info@dynamictools.ca

Dynamic® is a registered trademark of Gray Tools Canada Inc.