



**S35P**  
**5 Piece Left Hand Spiral Tapered Flute Extractor Set**

Contains: EX1, EX2, EX3, EX4, EX5  
 Includes Pouch



**SE1410**  
**10 Piece Combination Screw Extractor & Drill Set**

Contains:  
 5 cobalt high speed M35 steel jobber drill bits  
 5/64" - 9/32" and 5 left hand spiral tapered flute  
 extractors EX1-EX5.  
 Includes Metal Drill Index 90773

**SE100C**  
**10 Piece Screw Extractor Set**

Contains:  
 10 extractors 1/8" - 1 1/16"  
 Straight, tapered flutes provide a secure and firm grip



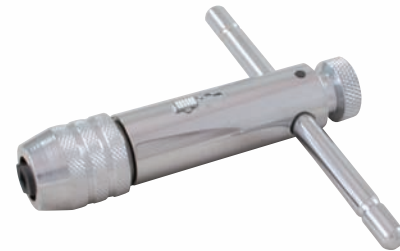
2591A



19

**Stud Removers**

Part No.	Description	Length
2591A	1/2" Dr. 1/4" to 9/16"	2"
19	1/2" Dr. 1/4" to 3/4"	2"



**Ratcheting Tap Wrenches - Reversible**

Part No.	Tap Sizes	Jaw Capacity
G52/1	0.118"- 0.315" (3-8mm)	0.078"- 0.197" (2-5mm)
G52/2	0.078"- 0.472" (5-12mm)	0.177"- 0.315" (4.5-8mm)